

Data Path : Z:\pestpcbsrv\HPCHEM1\FID\_C\Data\FC070224AL\  
 Data File : FC066720.D  
 Signal(s) : FID1A.ch  
 Acq On : 02 Jul 2024 18:18  
 Operator : YP/AJ  
 Sample : P3141-04  
 Misc :  
 ALS Vial : 10 Sample Multiplier: 1

Instrument :  
 FID\_C  
 ClientSampleId :  
 B-129-SB01

Integration File: autoint1.e  
 Quant Time: Jul 03 03:01:50 2024  
 Quant Method : Z:\pestpcbsrv\HPCHEM1\FID\_C\Method\Aliphatic EPH 061724.M  
 Quant Title : GC Extractables  
 QLast Update : Mon Jun 17 13:44:39 2024  
 Response via : Initial Calibration  
 Integrator: ChemStation

Volume Inj. : 1 ul  
 Signal Phase : Rxi-1ms  
 Signal Info : 20M x 0.18mm x 0.18um

Compound	R.T.	Response	Conc Units
-----			
System Monitoring Compounds			
12) S 1-chlorooctadecane (S...	12.964	3321765	24.074 ug/ml
Spiked Amount	50.000	Recovery	= 48.15%

Target Compounds

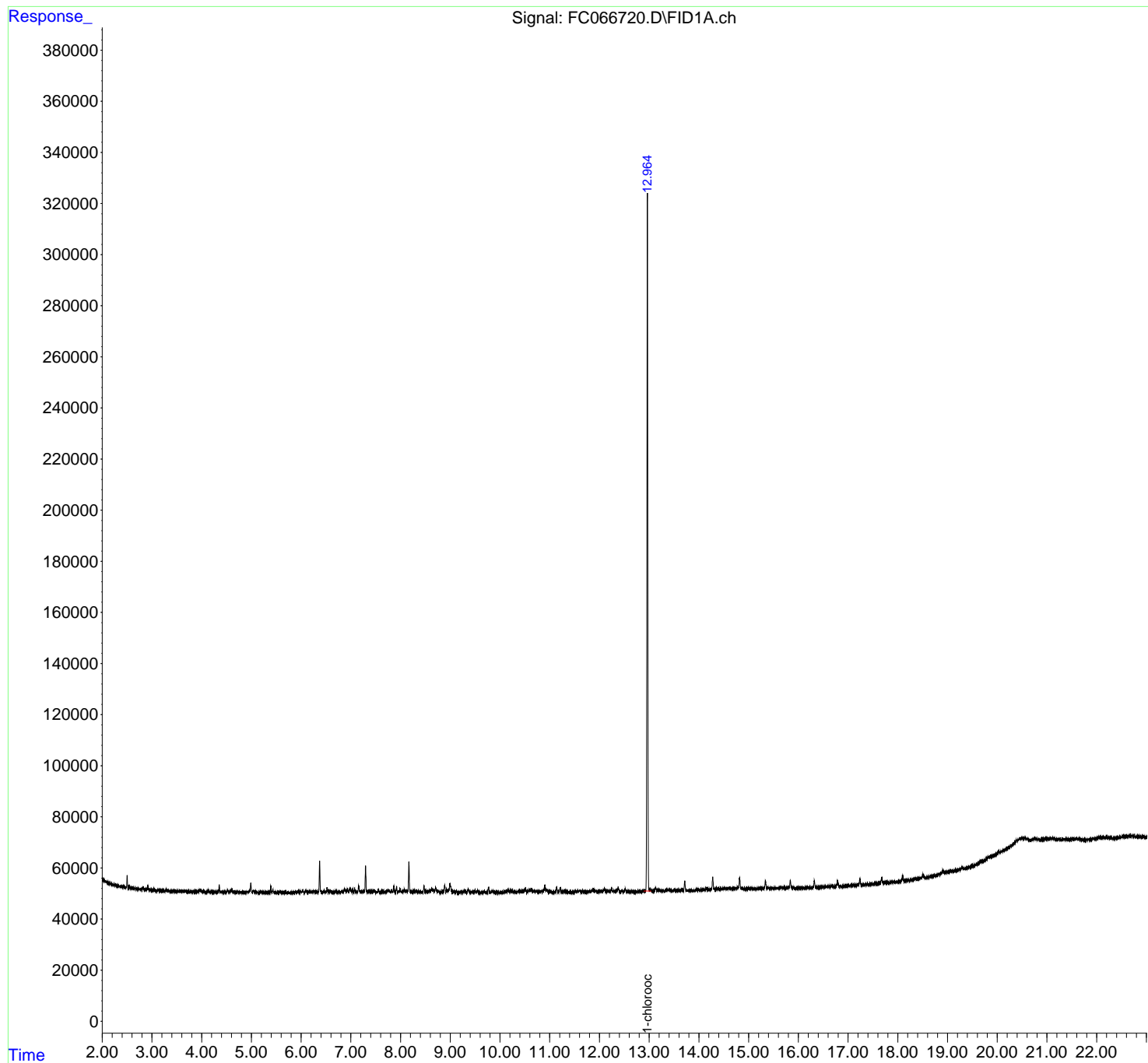
(f)=RT Delta > 1/2 Window (m)=manual int.

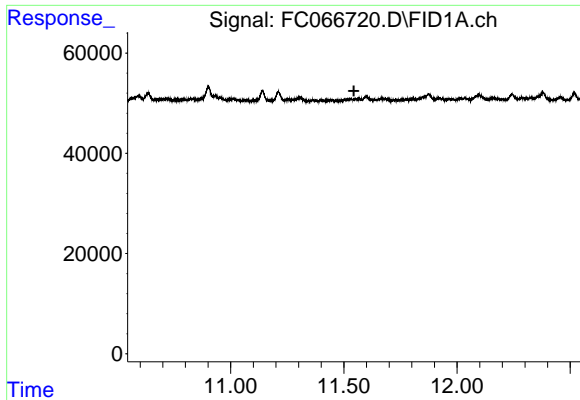
Data Path : Z:\pestpcbsrv\HPCHEM1\FID\_C\Data\FC070224AL\  
Data File : FC066720.D  
Signal(s) : FID1A.ch  
Acq On : 02 Jul 2024 18:18  
Operator : YP/AJ  
Sample : P3141-04  
Misc :  
ALS Vial : 10 Sample Multiplier: 1

Instrument :  
FID\_C  
ClientSampleId :  
B-129-SB01

Integration File: autoint1.e  
Quant Time: Jul 03 03:01:50 2024  
Quant Method : Z:\pestpcbsrv\HPCHEM1\FID\_C\Method\Aliphatic EPH 061724.M  
Quant Title : GC Extractables  
QLast Update : Mon Jun 17 13:44:39 2024  
Response via : Initial Calibration  
Integrator: ChemStation

Volume Inj. : 1 ul  
Signal Phase : Rxi-1ms  
Signal Info : 20M x 0.18mm x 0.18um

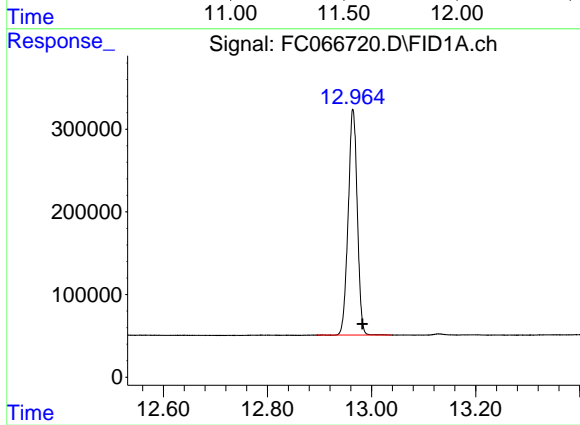




#9 ortho-Terphenyl (SURR)

R.T.: 0.000 min  
Exp R.T.: 11.544 min  
Response: 0  
Conc: N.D.

Instrument :  
FID\_C  
ClientSampleId :  
B-129-SB01



#12 1-chlorooctadecane (SURR)

R.T.: 12.964 min  
Delta R.T.: -0.018 min  
Response: 3321765  
Conc: 24.07 ug/ml