

Data Path : Z:\pestpcbsrv\HPCHEM1\FID_C\Data\FC070319AL\
 Data File : FC042217.D
 Signal(s) : FID1A.CH
 Acq On : 04 Jul 2019 8:23
 Operator : DD\AJ
 Sample : 20 PPM ALIPHATIC HC STD
 Misc :
 ALS Vial : 2 Sample Multiplier: 1

Instrument :
 FID_C
 ClientSampled :

Integration File: autoint1.e
 Quant Time: Jul 05 01:07:08 2019
 Quant Method : Z:\pestpcbsrv\HPCHEM1\FID_C\Method\Alaphatic EPH 061219.M
 Quant Title : GC Extractables
 QLast Update : Thu Jun 13 07:03:58 2019
 Response via : Initial Calibration
 Integrator: ChemStation 6890 Scale Mode: Large solvent peaks clipped

Volume Inj. : 1 ul
 Signal Phase : Rxi-1ms
 Signal Info : 20M x 0.18mm x 0.18um

Compound	R.T.	Response	Conc Units

System Monitoring Compounds			
9) S ortho-Terphenyl (SURR)	11.696	2590766	19.473 ug/ml
Spiked Amount	50.000	Recovery	= 38.95%
12) S 1-chlorooctadecane (S...	13.119	2074488	18.879 ug/ml
Spiked Amount	50.000	Recovery	= 37.76%
Target Compounds			
1) T n-Nonane (C9)	3.491	2568979	22.106 ug/ml
2) T n-Decane (C10)	4.556	2625410	22.311 ug/ml
3) T A~Naphthalene (C11.7)	6.142	2867538	21.575 ug/ml
4) T n-Dodecane (C12)	6.561	2638520	22.217 ug/ml
5) T A~2-methylnaphthalene...	7.193	2845406	21.371 ug/ml
6) T n-Tetradecane (C14)	8.344	2637460	21.824 ug/ml
7) T n-Hexadecane (C16)	9.937	2601489	21.228 ug/ml
8) T n-Octadecane (C18)	11.371	2533868	20.449 ug/ml
10) T n-Eicosane (C20)	12.674	2458073	19.427 ug/ml
11) T n-Heneicosane (C21)	13.283	2414703	19.126 ug/ml
13) T n-Docosane (C22)	13.867	2339058	18.512 ug/ml
14) T n-Tetracosane (C24)	14.965	2273260	17.866 ug/ml
15) T n-Hexacosane (C26)	15.982	2209009	17.793 ug/ml
16) T n-Octacosane (C28)	16.928	2197901	18.038 ug/ml
17) T n-Tricontane (C30)	17.814	2174722	18.657 ug/ml
18) T n-Dotriacontane (C32)	18.643	2055913	19.041 ug/ml
19) T n-Tetratriacontane (C34)	19.422	1755277	20.398 ug/ml
20) T n-Hexatriacontane (C36)	20.159	1560284	20.130 ug/ml
21) T n-Octatriacontane (C38)	20.906	1467913	22.198 ug/ml
22) T n-Tetracontane (C40)	21.842	1473077	21.804 ug/ml

(f)=RT Delta > 1/2 Window

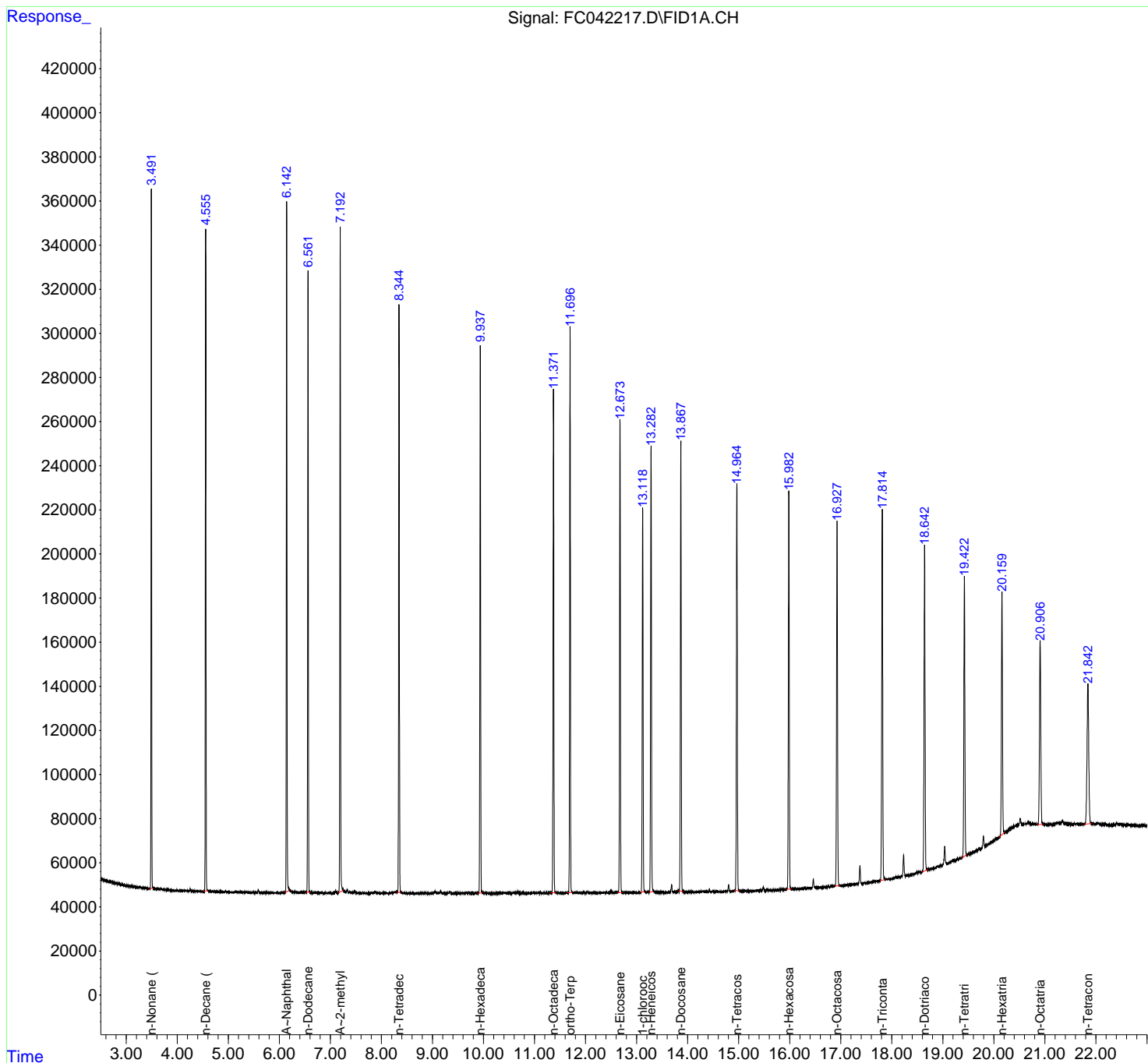
(m)=manual int.

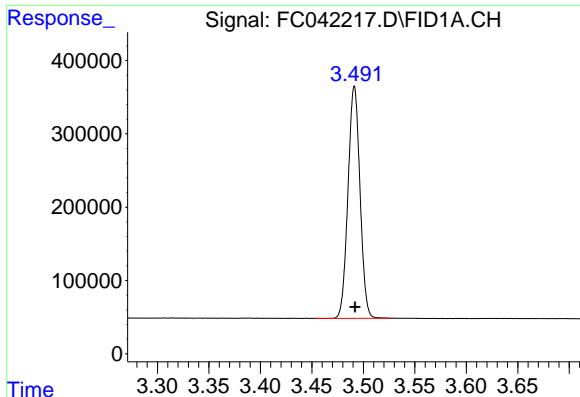
Data Path : Z:\pestpcbsrv\HPCHEM1\FID_C\Data\FC070319AL\
 Data File : FC042217.D
 Signal(s) : FID1A.CH
 Acq On : 04 Jul 2019 8:23
 Operator : DD\AJ
 Sample : 20 PPM ALIPHATIC HC STD
 Misc :
 ALS Vial : 2 Sample Multiplier: 1

Instrument :
 FID_C
 ClientSampled :

Integration File: autoint1.e
 Quant Time: Jul 05 01:07:08 2019
 Quant Method : Z:\pestpcbsrv\HPCHEM1\FID_C\Method\Aliphatic EPH 061219.M
 Quant Title : GC Extractables
 QLast Update : Thu Jun 13 07:03:58 2019
 Response via : Initial Calibration
 Integrator: ChemStation 6890 Scale Mode: Large solvent peaks clipped

Volume Inj. : 1 ul
 Signal Phase : Rxi-1ms
 Signal Info : 20M x 0.18mm x 0.18um

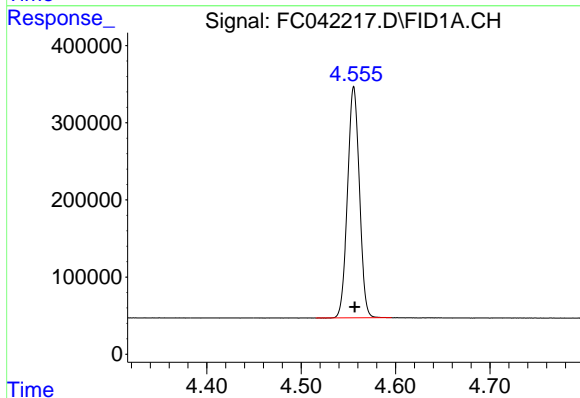




#1 n-Nonane (C9)

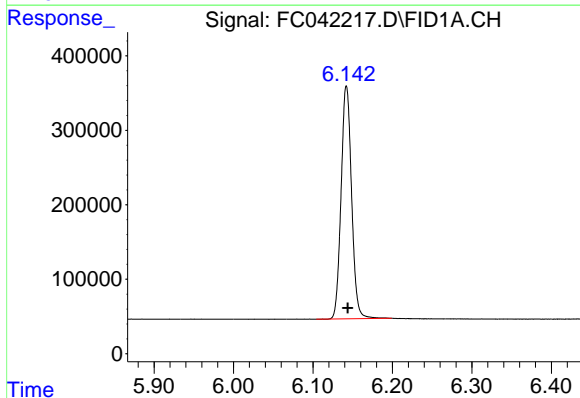
R.T.: 3.491 min
Delta R.T.: 0.000 min
Response: 2568979
Conc: 22.11 ug/ml

Instrument :
FID_C
ClientSampleId :



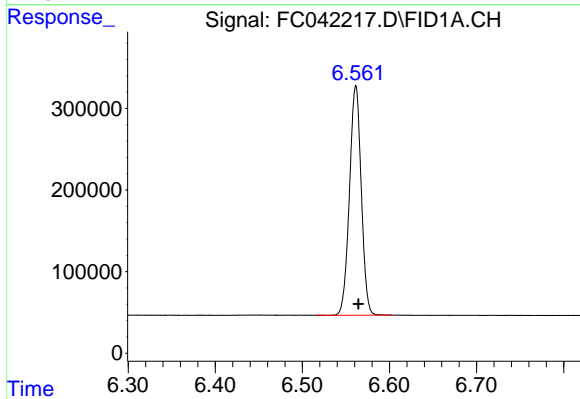
#2 n-Decane (C10)

R.T.: 4.556 min
Delta R.T.: -0.001 min
Response: 2625410
Conc: 22.31 ug/ml



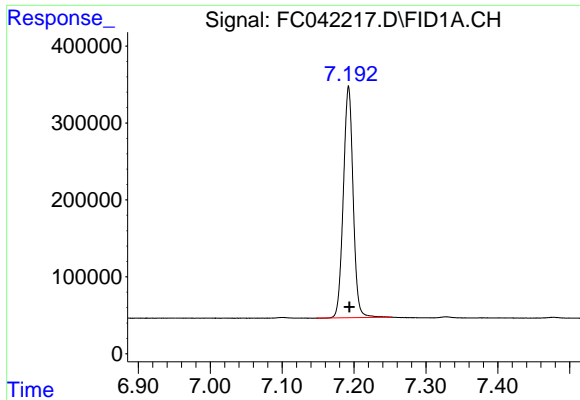
#3 A-Naphthalene (C11.7)

R.T.: 6.142 min
Delta R.T.: -0.002 min
Response: 2867538
Conc: 21.58 ug/ml



#4 n-Dodecane (C12)

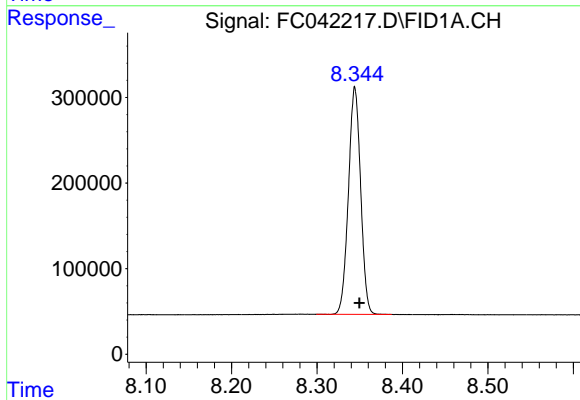
R.T.: 6.561 min
Delta R.T.: -0.003 min
Response: 2638520
Conc: 22.22 ug/ml



#5 A~2-methylnaphthalene (C12.89)

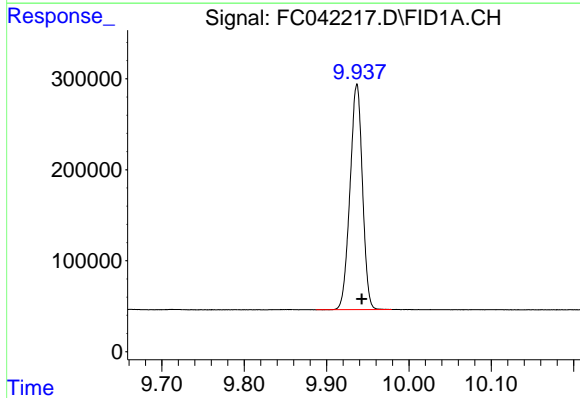
R.T.: 7.193 min
Delta R.T.: -0.001 min
Response: 2845406
Conc: 21.37 ug/ml

Instrument :
FID_C
ClientSampled :



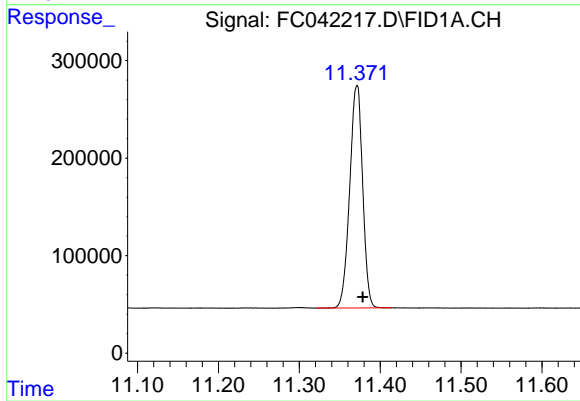
#6 n-Tetradecane (C14)

R.T.: 8.344 min
Delta R.T.: -0.005 min
Response: 2637460
Conc: 21.82 ug/ml



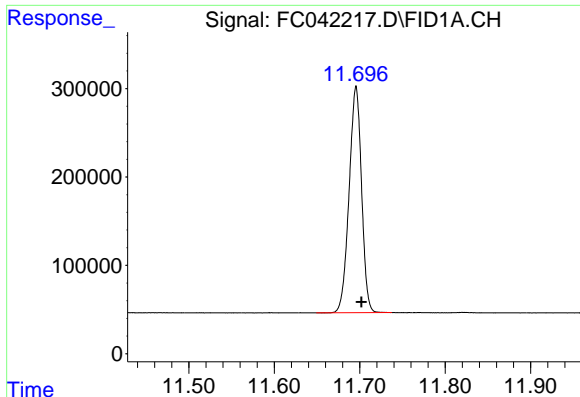
#7 n-Hexadecane (C16)

R.T.: 9.937 min
Delta R.T.: -0.006 min
Response: 2601489
Conc: 21.23 ug/ml



#8 n-Octadecane (C18)

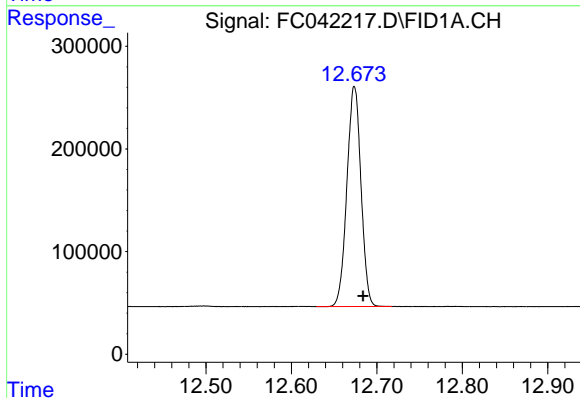
R.T.: 11.371 min
Delta R.T.: -0.007 min
Response: 2533868
Conc: 20.45 ug/ml



#9 ortho-Terphenyl (SURR)

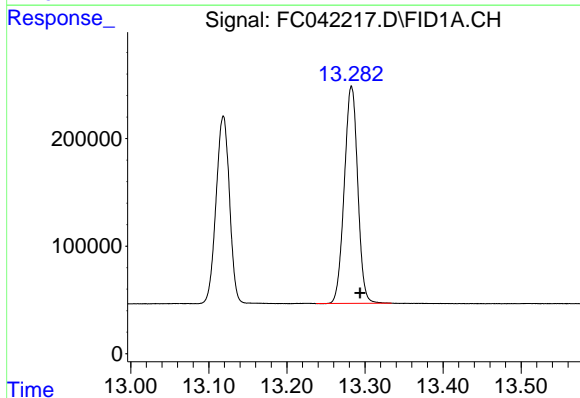
R.T.: 11.696 min
 Delta R.T.: -0.006 min
 Response: 2590766
 Conc: 19.47 ug/ml

Instrument :
 FID_C
 ClientSampled :



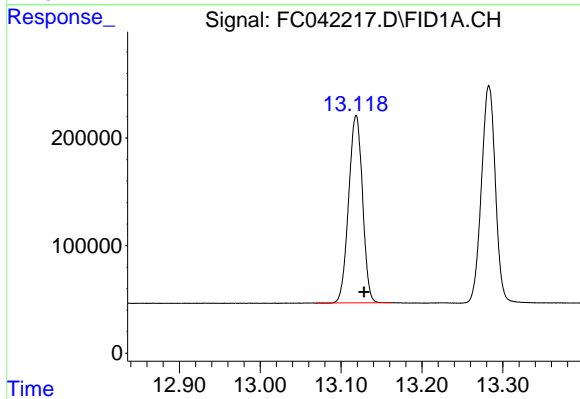
#10 n-Eicosane (C20)

R.T.: 12.674 min
 Delta R.T.: -0.010 min
 Response: 2458073
 Conc: 19.43 ug/ml



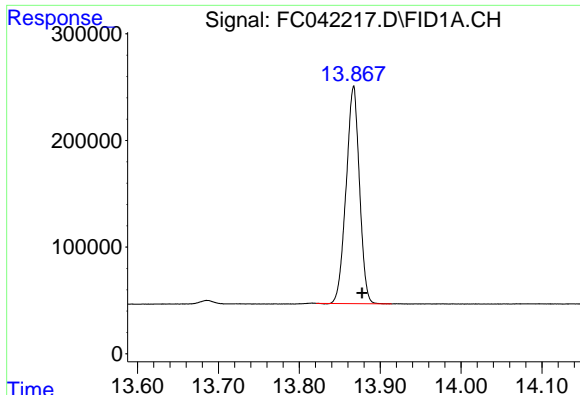
#11 n-Heneicosane (C21)

R.T.: 13.283 min
 Delta R.T.: -0.011 min
 Response: 2414703
 Conc: 19.13 ug/ml



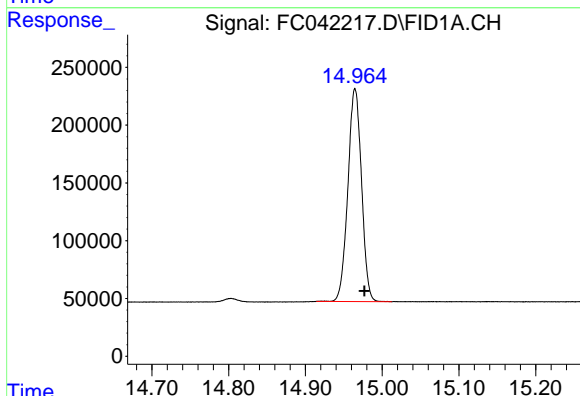
#12 1-chlorooctadecane (SURR)

R.T.: 13.119 min
 Delta R.T.: -0.010 min
 Response: 2074488
 Conc: 18.88 ug/ml

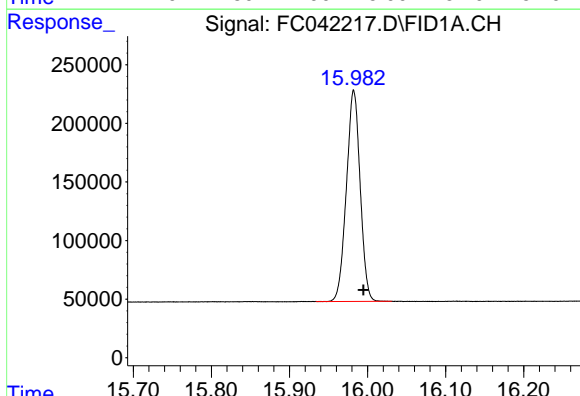


#13 n-Docosane (C22)
 R.T.: 13.867 min
 Delta R.T.: -0.011 min
 Response: 2339058
 Conc: 18.51 ug/ml

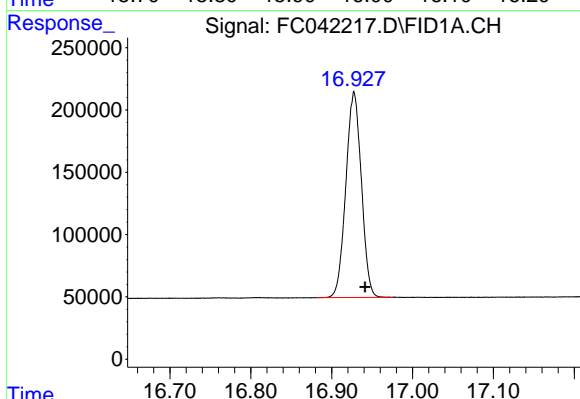
Instrument :
 FID_C
 ClientSampled :



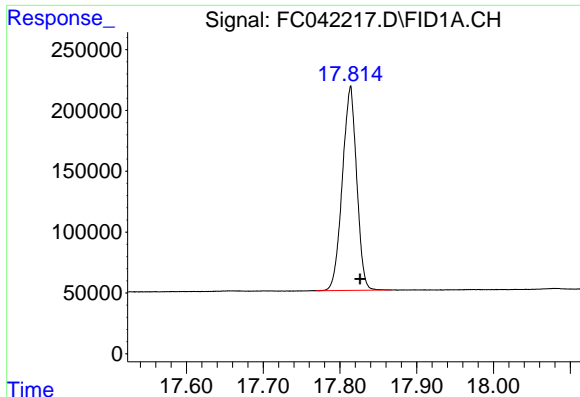
#14 n-Tetracosane (C24)
 R.T.: 14.965 min
 Delta R.T.: -0.012 min
 Response: 2273260
 Conc: 17.87 ug/ml



#15 n-Hexacosane (C26)
 R.T.: 15.982 min
 Delta R.T.: -0.012 min
 Response: 2209009
 Conc: 17.79 ug/ml



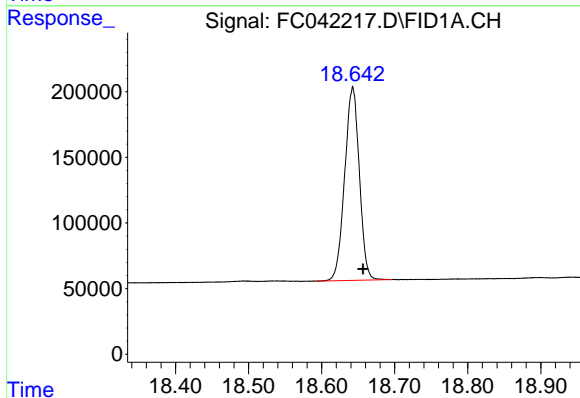
#16 n-Octacosane (C28)
 R.T.: 16.928 min
 Delta R.T.: -0.013 min
 Response: 2197901
 Conc: 18.04 ug/ml



#17 n-Tricontane (C30)

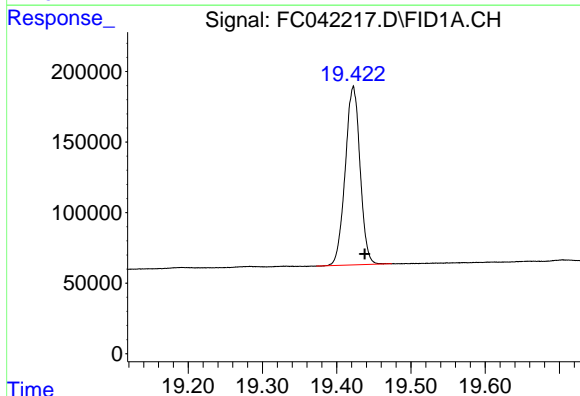
R.T.: 17.814 min
Delta R.T.: -0.012 min
Response: 2174722
Conc: 18.66 ug/ml

Instrument :
FID_C
ClientSampled :



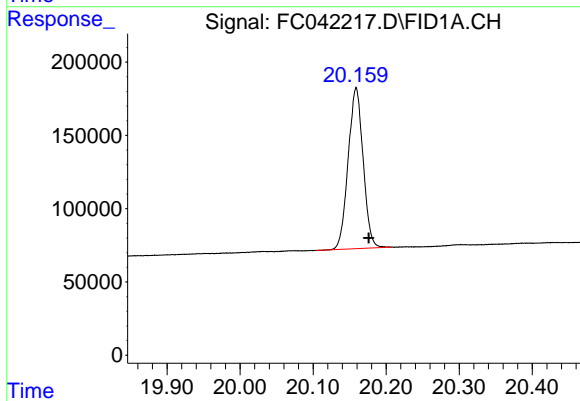
#18 n-Dotriacontane (C32)

R.T.: 18.643 min
Delta R.T.: -0.014 min
Response: 2055913
Conc: 19.04 ug/ml



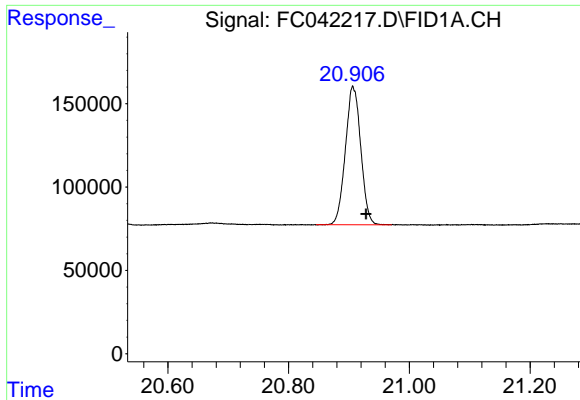
#19 n-Tetratriacontane (C34)

R.T.: 19.422 min
Delta R.T.: -0.015 min
Response: 1755277
Conc: 20.40 ug/ml



#20 n-Hexatriacontane (C36)

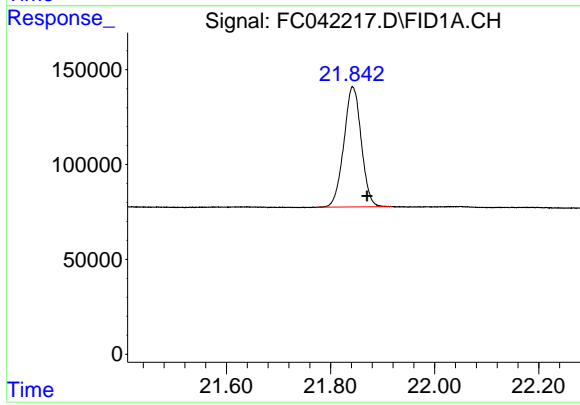
R.T.: 20.159 min
Delta R.T.: -0.017 min
Response: 1560284
Conc: 20.13 ug/ml



#21 n-Octatriacontane (C38)

R.T.: 20.906 min
Delta R.T.: -0.022 min
Response: 1467913
Conc: 22.20 ug/ml

Instrument :
FID_C
ClientSampleId :



#22 n-Tetracontane (C40)

R.T.: 21.842 min
Delta R.T.: -0.027 min
Response: 1473077
Conc: 21.80 ug/ml