

Data Path : Z:\pestpcbsrv\HPCHEM1\FID\_C\Data\FC070319AL\  
 Data File : FC042200.D  
 Signal(s) : FID1A.CH  
 Acq On : 03 Jul 2019 21:01  
 Operator : DD\AJ  
 Sample : PB121159BS  
 Misc :  
 ALS Vial : 17 Sample Multiplier: 1

Instrument :  
 FID\_C  
 ClientSampled :

Integration File: autoint1.e  
 Quant Time: Jul 03 22:48:10 2019  
 Quant Method : Z:\pestpcbsrv\HPCHEM1\FID\_C\Method\Alaphatic EPH 061219.M  
 Quant Title : GC Extractables  
 QLast Update : Thu Jun 13 07:03:58 2019  
 Response via : Initial Calibration  
 Integrator: ChemStation 6890 Scale Mode: Large solvent peaks clipped

Volume Inj. : 1 ul  
 Signal Phase : Rxi-1ms  
 Signal Info : 20M x 0.18mm x 0.18um

| Compound                       | R.T.   | Response | Conc Units   |
|--------------------------------|--------|----------|--------------|
| -----                          |        |          |              |
| System Monitoring Compounds    |        |          |              |
| 9) S ortho-Terphenyl (SURR)    | 11.700 | 5183863  | 38.964 ug/ml |
| Spiked Amount                  | 50.000 | Recovery | = 77.93%     |
| 12) S 1-chlorooctadecane (S... | 13.123 | 4187302  | 38.107 ug/ml |
| Spiked Amount                  | 50.000 | Recovery | = 76.21%     |
| Target Compounds               |        |          |              |
| 1) T n-Nonane (C9)             | 3.505  | 4480092  | 38.551 ug/ml |
| 2) T n-Decane (C10)            | 4.564  | 4782766  | 40.644 ug/ml |
| 3) T A~Naphthalene (C11.7)     | 6.146  | 5509418  | 41.452 ug/ml |
| 4) T n-Dodecane (C12)          | 6.565  | 5008253  | 42.171 ug/ml |
| 5) T A~2-methylnaphthalene...  | 7.196  | 5533320  | 41.559 ug/ml |
| 6) T n-Tetradecane (C14)       | 8.349  | 5050571  | 41.792 ug/ml |
| 7) T n-Hexadecane (C16)        | 9.940  | 4950613  | 40.396 ug/ml |
| 8) T n-Octadecane (C18)        | 11.375 | 4844501  | 39.097 ug/ml |
| 10) T n-Eicosane (C20)         | 12.679 | 4633809  | 36.622 ug/ml |
| 11) T n-Heneicosane (C21)      | 13.288 | 4550495  | 36.044 ug/ml |
| 13) T n-Docosane (C22)         | 13.872 | 4449656  | 35.216 ug/ml |
| 14) T n-Tetracosane (C24)      | 14.973 | 8754409  | 68.804 ug/ml |
| 15) T n-Hexacosane (C26)       | 15.989 | 4130999  | 33.273 ug/ml |
| 16) T n-Octacosane (C28)       | 16.935 | 4069035  | 33.394 ug/ml |
| 17) T n-Tricontane (C30)       | 17.820 | 4046960  | 34.718 ug/ml |
| 18) T n-Dotriacontane (C32)    | 18.648 | 3942068  | 36.510 ug/ml |
| 19) T n-Tetratriacontane (C34) | 19.430 | 3886271  | 45.163 ug/ml |
| 20) T n-Hexatriacontane (C36)  | 20.167 | 3786465  | 48.850 ug/ml |
| 21) T n-Octatriacontane (C38)  | 20.914 | 3579785  | 54.134 ug/ml |
| 22) T n-Tetracontane (C40)     | 21.852 | 3971528  | 58.786 ug/ml |
| -----                          |        |          |              |

(f)=RT Delta > 1/2 Window

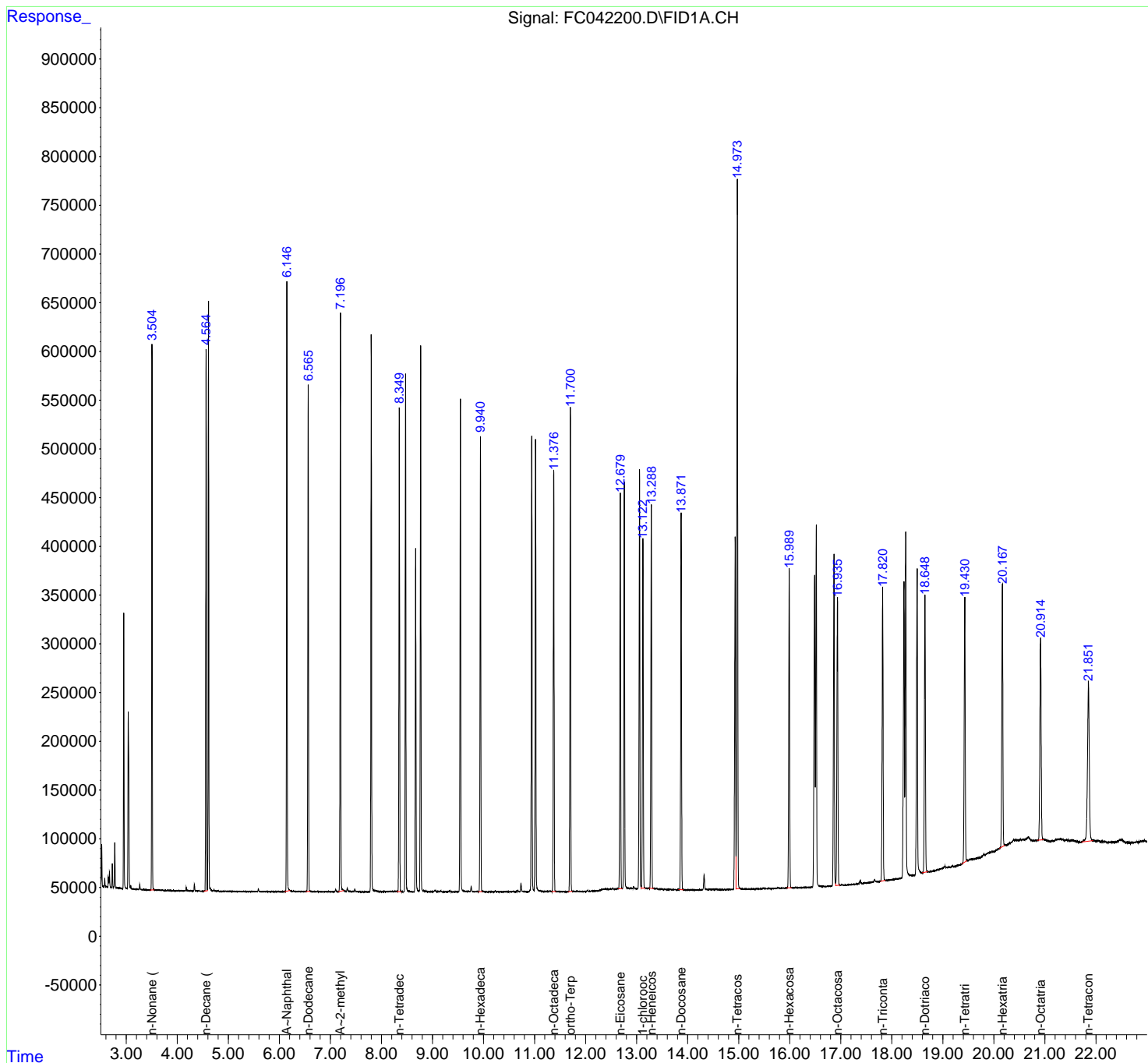
(m)=manual int.

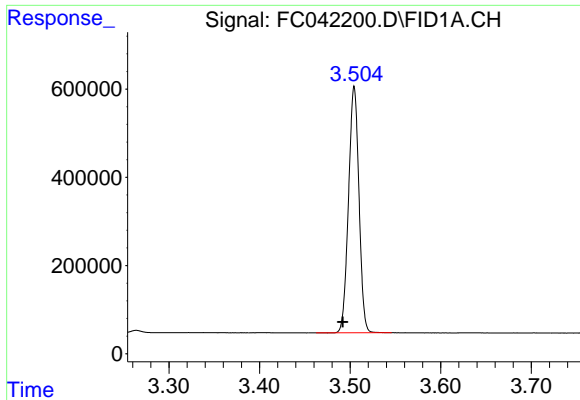
Data Path : Z:\pestpcbsrv\HPCHEM1\FID\_C\Data\FC070319AL\  
 Data File : FC042200.D  
 Signal(s) : FID1A.CH  
 Acq On : 03 Jul 2019 21:01  
 Operator : DD\AJ  
 Sample : PB121159BS  
 Misc :  
 ALS Vial : 17 Sample Multiplier: 1

Instrument :  
 FID\_C  
 ClientSampled :

Integration File: autoint1.e  
 Quant Time: Jul 03 22:48:10 2019  
 Quant Method : Z:\pestpcbsrv\HPCHEM1\FID\_C\Method\Aliphatic EPH 061219.M  
 Quant Title : GC Extractables  
 QLast Update : Thu Jun 13 07:03:58 2019  
 Response via : Initial Calibration  
 Integrator: ChemStation 6890 Scale Mode: Large solvent peaks clipped

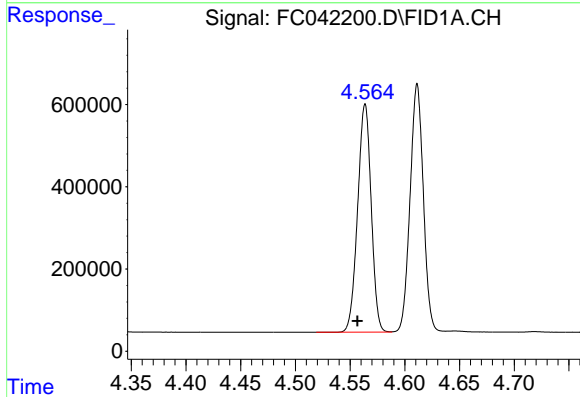
Volume Inj. : 1 ul  
 Signal Phase : Rxi-1ms  
 Signal Info : 20M x 0.18mm x 0.18um



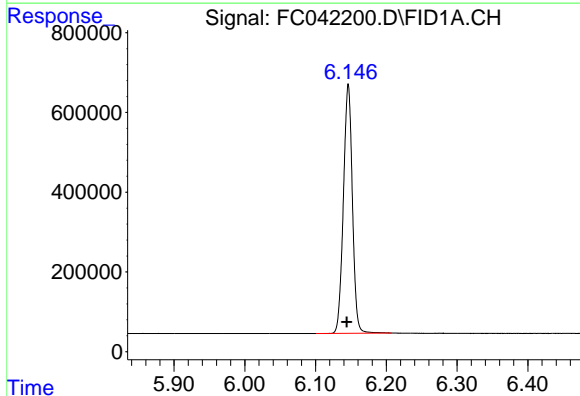


#1 n-Nonane (C9)  
R.T.: 3.505 min  
Delta R.T.: 0.013 min  
Response: 4480092  
Conc: 38.55 ug/ml

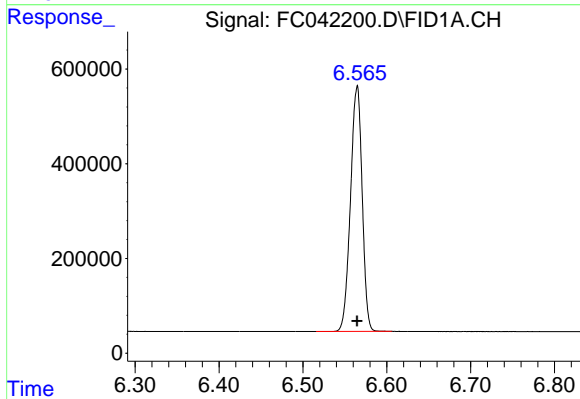
Instrument :  
FID\_C  
ClientSampleId :



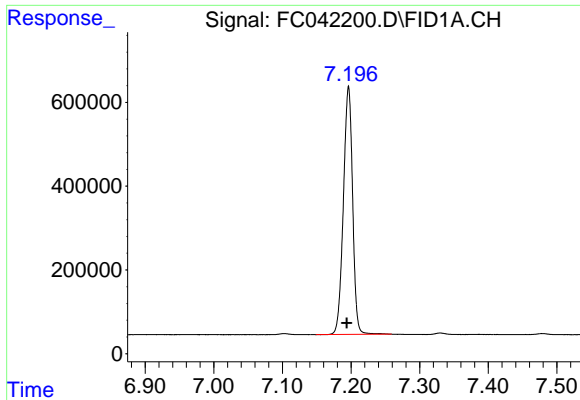
#2 n-Decane (C10)  
R.T.: 4.564 min  
Delta R.T.: 0.007 min  
Response: 4782766  
Conc: 40.64 ug/ml



#3 A-Naphthalene (C11.7)  
R.T.: 6.146 min  
Delta R.T.: 0.002 min  
Response: 5509418  
Conc: 41.45 ug/ml



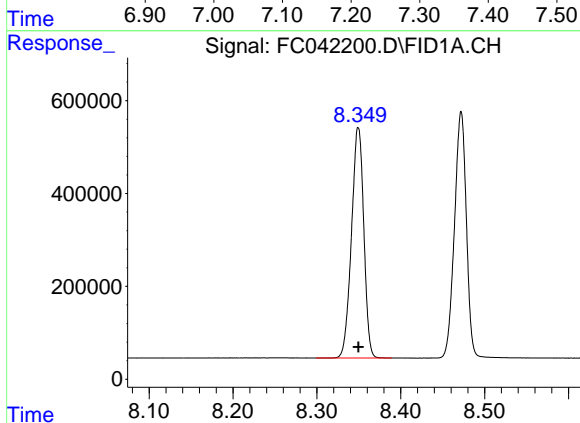
#4 n-Dodecane (C12)  
R.T.: 6.565 min  
Delta R.T.: 0.000 min  
Response: 5008253  
Conc: 42.17 ug/ml



#5 A~2-methylnaphthalene (C12.89)

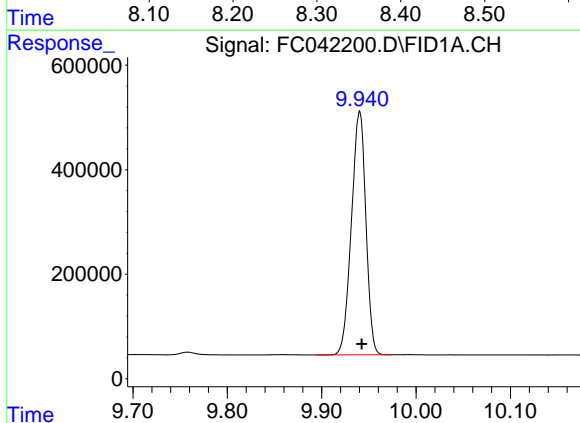
R.T.: 7.196 min  
 Delta R.T.: 0.002 min  
 Response: 5533320  
 Conc: 41.56 ug/ml

Instrument :  
 FID\_C  
 ClientSampled :



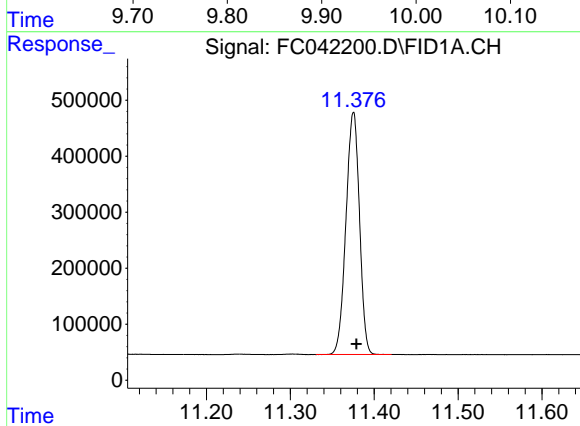
#6 n-Tetradecane (C14)

R.T.: 8.349 min  
 Delta R.T.: 0.000 min  
 Response: 5050571  
 Conc: 41.79 ug/ml



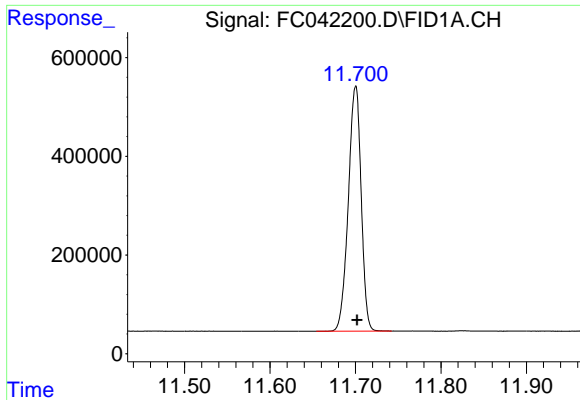
#7 n-Hexadecane (C16)

R.T.: 9.940 min  
 Delta R.T.: -0.002 min  
 Response: 4950613  
 Conc: 40.40 ug/ml



#8 n-Octadecane (C18)

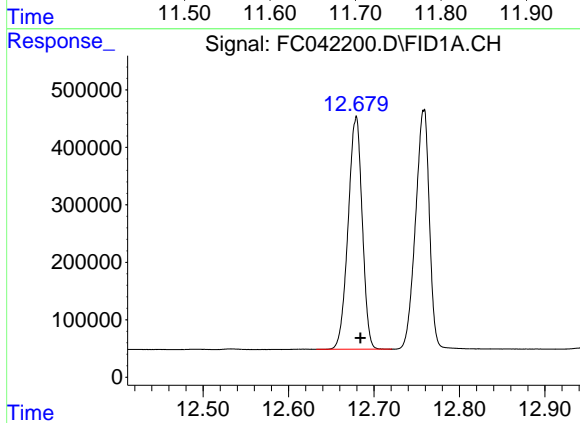
R.T.: 11.375 min  
 Delta R.T.: -0.003 min  
 Response: 4844501  
 Conc: 39.10 ug/ml



#9 ortho-Terphenyl (SURR)

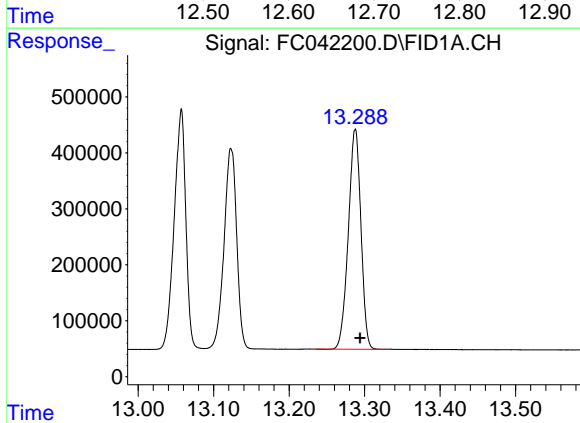
R.T.: 11.700 min  
 Delta R.T.: -0.002 min  
 Response: 5183863  
 Conc: 38.96 ug/ml

Instrument :  
 FID\_C  
 ClientSampleId :



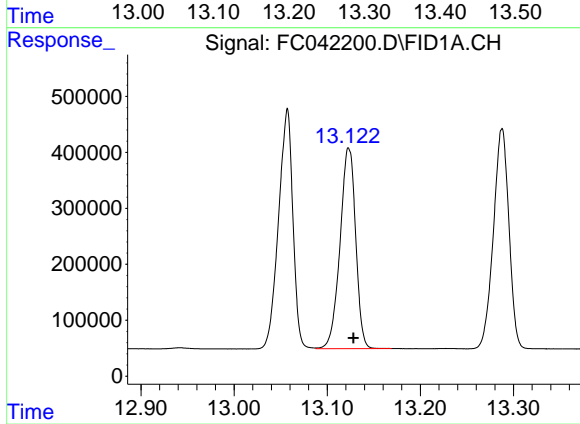
#10 n-Eicosane (C20)

R.T.: 12.679 min  
 Delta R.T.: -0.005 min  
 Response: 4633809  
 Conc: 36.62 ug/ml



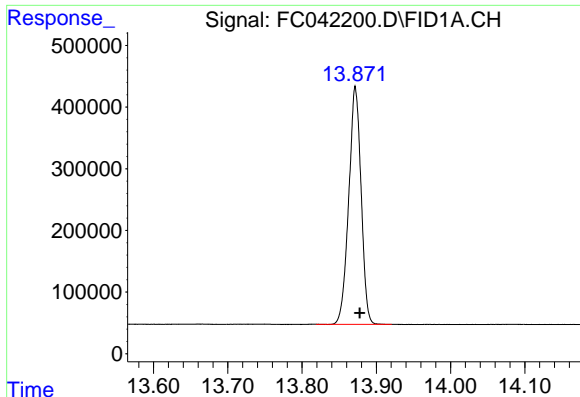
#11 n-Heneicosane (C21)

R.T.: 13.288 min  
 Delta R.T.: -0.006 min  
 Response: 4550495  
 Conc: 36.04 ug/ml



#12 1-chlorooctadecane (SURR)

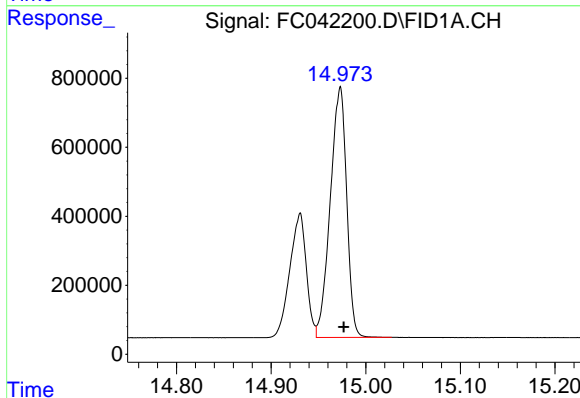
R.T.: 13.123 min  
 Delta R.T.: -0.005 min  
 Response: 4187302  
 Conc: 38.11 ug/ml



#13 n-Docosane (C22)

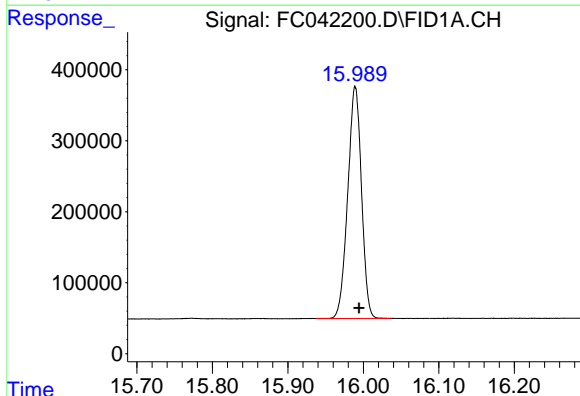
R.T.: 13.872 min  
Delta R.T.: -0.006 min  
Response: 4449656  
Conc: 35.22 ug/ml

Instrument :  
FID\_C  
ClientSampled :



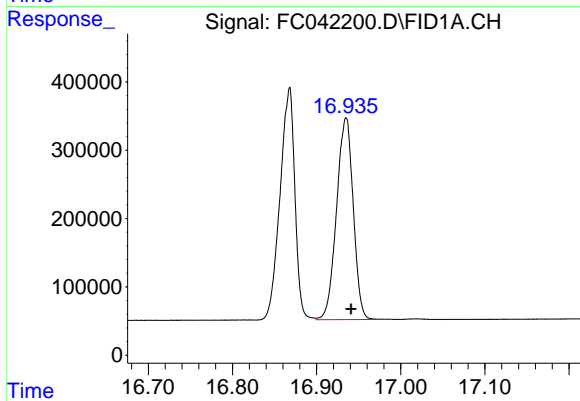
#14 n-Tetracosane (C24)

R.T.: 14.973 min  
Delta R.T.: -0.004 min  
Response: 8754409  
Conc: 68.80 ug/ml



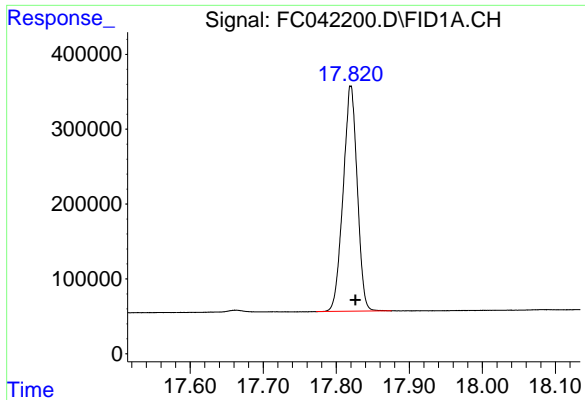
#15 n-Hexacosane (C26)

R.T.: 15.989 min  
Delta R.T.: -0.005 min  
Response: 4130999  
Conc: 33.27 ug/ml



#16 n-Octacosane (C28)

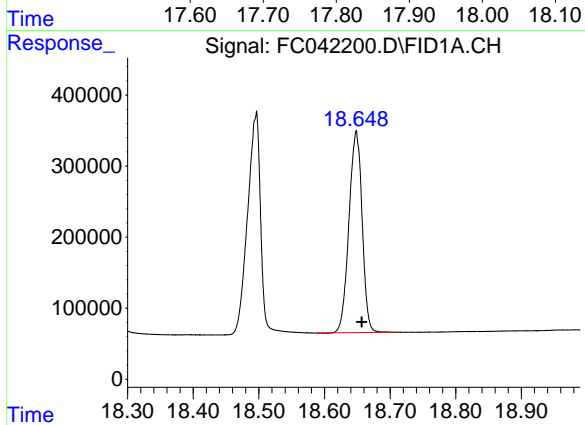
R.T.: 16.935 min  
Delta R.T.: -0.006 min  
Response: 4069035  
Conc: 33.39 ug/ml



#17 n-Tricontane (C30)

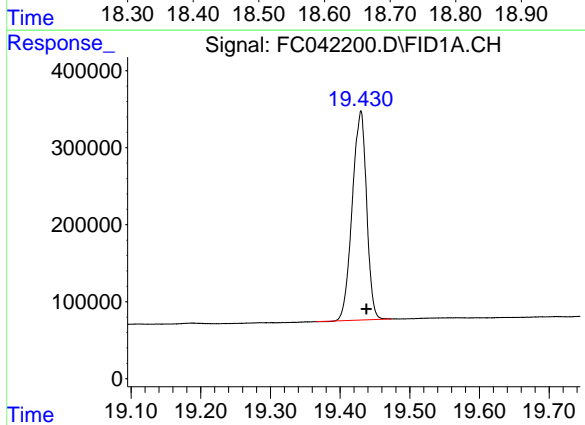
R.T.: 17.820 min  
Delta R.T.: -0.006 min  
Response: 4046960  
Conc: 34.72 ug/ml

Instrument :  
FID\_C  
ClientSampled :



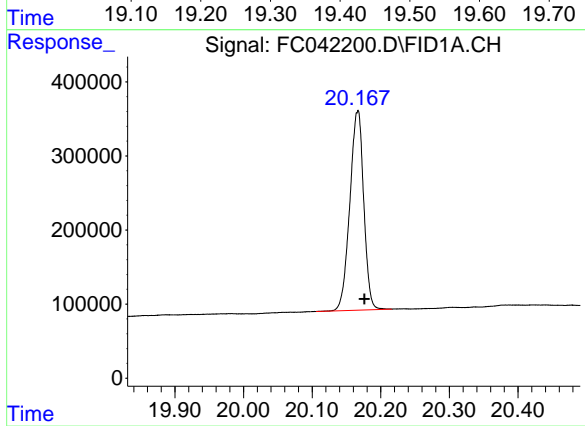
#18 n-Dotriacontane (C32)

R.T.: 18.648 min  
Delta R.T.: -0.009 min  
Response: 3942068  
Conc: 36.51 ug/ml



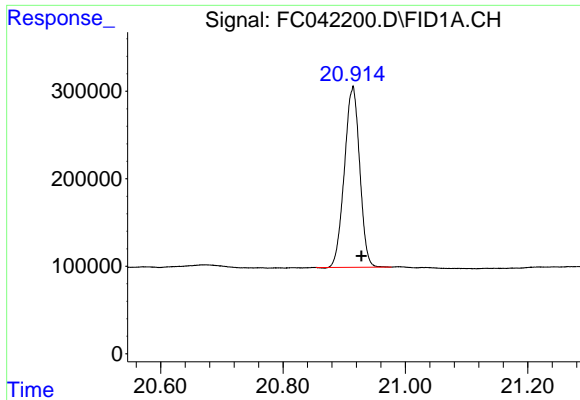
#19 n-Tetratriacontane (C34)

R.T.: 19.430 min  
Delta R.T.: -0.008 min  
Response: 3886271  
Conc: 45.16 ug/ml



#20 n-Hexatriacontane (C36)

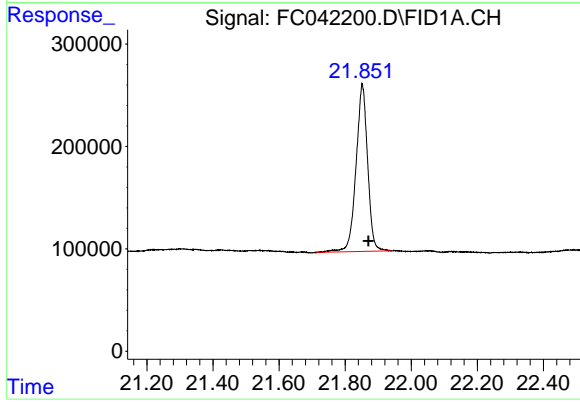
R.T.: 20.167 min  
Delta R.T.: -0.009 min  
Response: 3786465  
Conc: 48.85 ug/ml



#21 n-Octatriacontane (C38)

R.T.: 20.914 min  
Delta R.T.: -0.014 min  
Response: 3579785  
Conc: 54.13 ug/ml

Instrument :  
FID\_C  
ClientSampled :



#22 n-Tetracontane (C40)

R.T.: 21.852 min  
Delta R.T.: -0.018 min  
Response: 3971528  
Conc: 58.79 ug/ml