

Data Path : Z:\pestpcbsrv\HPCHEM1\FID_C\Data\FC070519AL\
 Data File : FC042229.D
 Signal(s) : FID1A.CH
 Acq On : 05 Jul 2019 15:21
 Operator : DD\AJ
 Sample : K3668-05
 Misc :
 ALS Vial : 9 Sample Multiplier: 1

Integration File: autoint1.e
 Quant Time: Jul 06 07:14:39 2019
 Quant Method : Z:\pestpcbsrv\HPCHEM1\FID_C\Method\Alaphatic EPH 061219.M
 Quant Title : GC Extractables
 QLast Update : Thu Jun 13 07:03:58 2019
 Response via : Initial Calibration
 Integrator: ChemStation 6890 Scale Mode: Large solvent peaks clipped

Volume Inj. : 1 ul
 Signal Phase : Rxi-1ms
 Signal Info : 20M x 0.18mm x 0.18um

Compound	R.T.	Response	Conc Units

System Monitoring Compounds			
9) S ortho-Terphenyl (SURR)	11.696	3477521	26.139 ug/ml
Spiked Amount	50.000	Recovery	= 52.28%
12) S 1-chlorooctadecane (S...	13.119	2808830	25.562 ug/ml
Spiked Amount	50.000	Recovery	= 51.12%
Target Compounds			
6) T n-Tetradecane (C14)	8.407f	239085	1.978 ug/ml
17) T n-Tricontane (C30)	17.809	221867	1.903 ug/ml
18) T n-Dotriacontane (C32)	18.638	209185	1.937 ug/ml

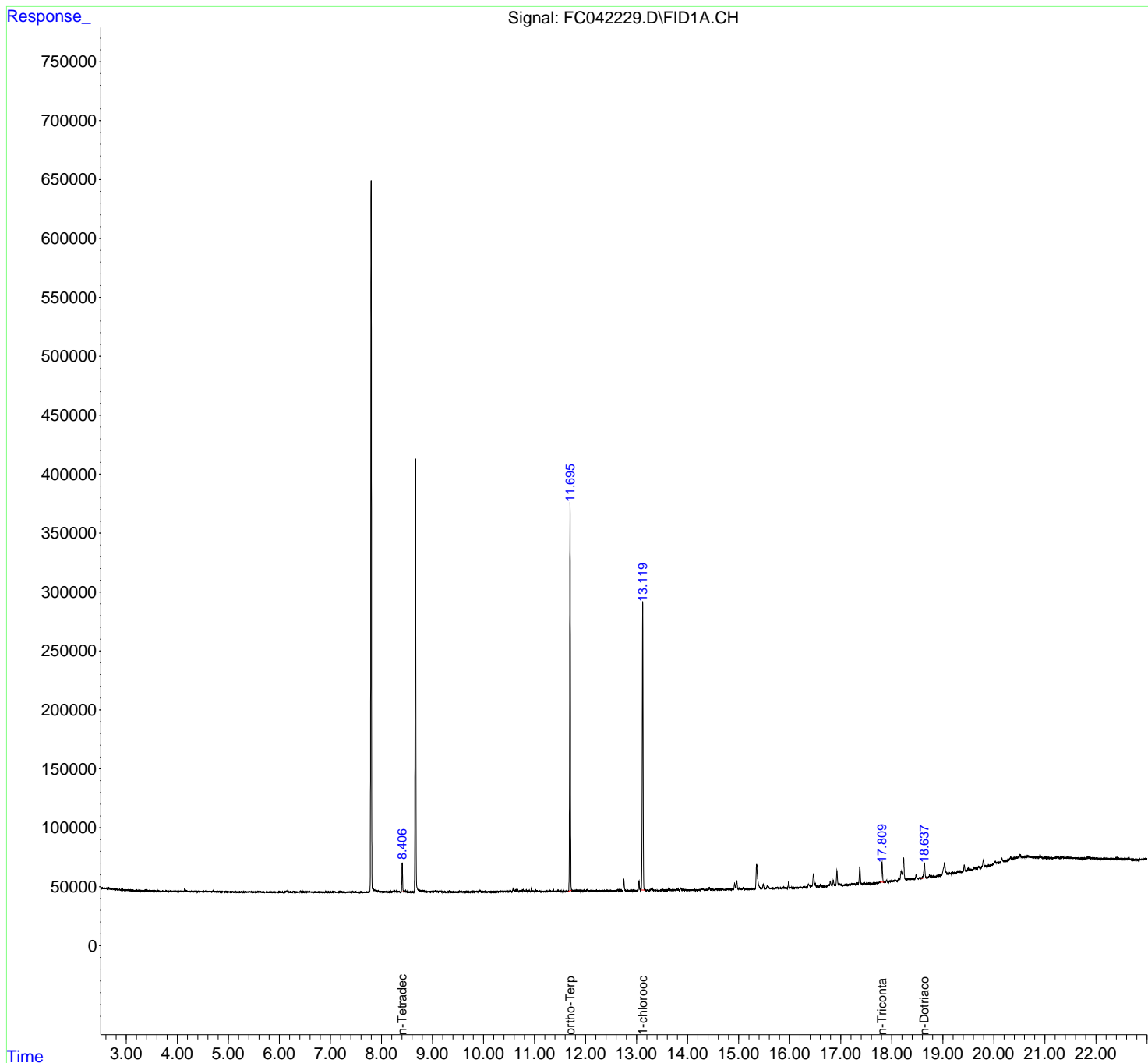
(f)=RT Delta > 1/2 Window

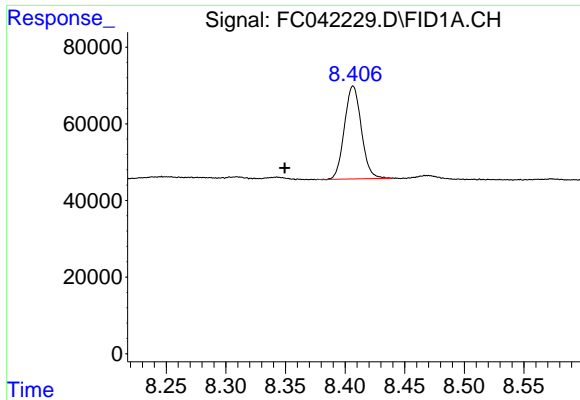
(m)=manual int.

Data Path : Z:\pestpcbsrv\HPCHEM1\FID_C\Data\FC070519AL\
Data File : FC042229.D
Signal(s) : FID1A.CH
Acq On : 05 Jul 2019 15:21
Operator : DD\AJ
Sample : K3668-05
Misc :
ALS Vial : 9 Sample Multiplier: 1

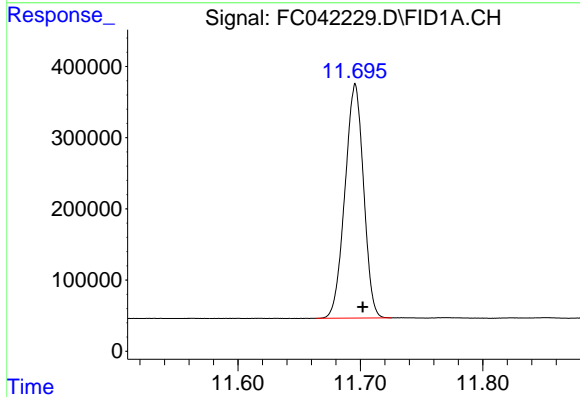
Integration File: autoint1.e
Quant Time: Jul 06 07:14:39 2019
Quant Method : Z:\pestpcbsrv\HPCHEM1\FID_C\Method\Aliphatic EPH 061219.M
Quant Title : GC Extractables
QLast Update : Thu Jun 13 07:03:58 2019
Response via : Initial Calibration
Integrator: ChemStation 6890 Scale Mode: Large solvent peaks clipped

Volume Inj. : 1 ul
Signal Phase : Rxi-1ms
Signal Info : 20M x 0.18mm x 0.18um

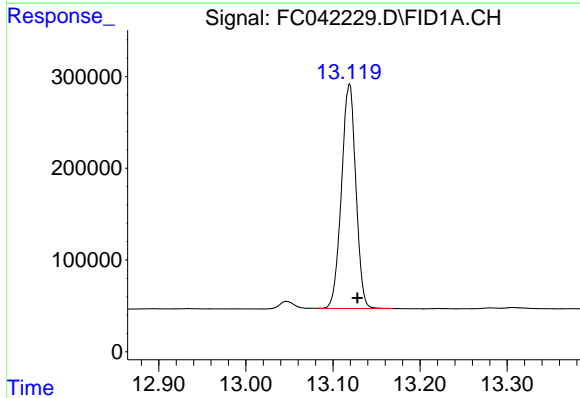




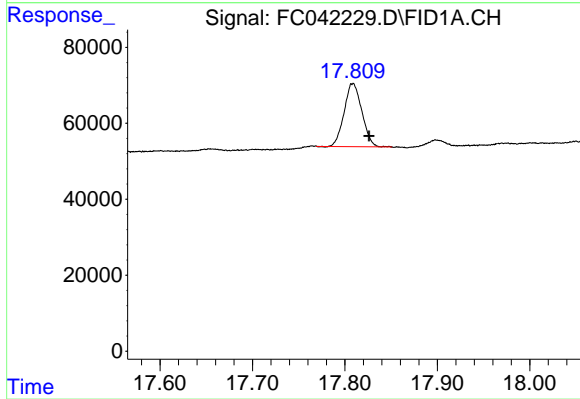
#6 n-Tetradecane (C14)
R.T.: 8.407 min
Delta R.T.: 0.057 min
Response: 239085
Conc: 1.98 ug/ml



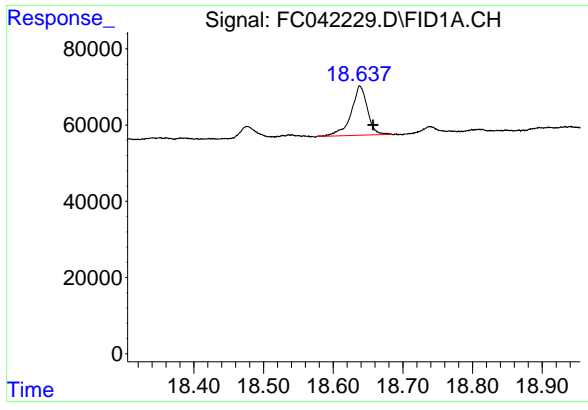
#9 ortho-Terphenyl (SURR)
R.T.: 11.696 min
Delta R.T.: -0.006 min
Response: 3477521
Conc: 26.14 ug/ml



#12 1-chlorooctadecane (SURR)
R.T.: 13.119 min
Delta R.T.: -0.009 min
Response: 2808830
Conc: 25.56 ug/ml



#17 n-Tricontane (C30)
R.T.: 17.809 min
Delta R.T.: -0.018 min
Response: 221867
Conc: 1.90 ug/ml



#18 n-Dotriacontane (C32)

R.T.: 18.638 min
Delta R.T.: -0.018 min
Response: 209185
Conc: 1.94 ug/ml