

Data Path : Z:\pestpcbsrv\HPCHEM1\FID\_C\Data\FC070519AL\  
 Data File : FC042241.D  
 Signal(s) : FID1A.CH  
 Acq On : 05 Jul 2019 23:03  
 Operator : DD\AJ  
 Sample : K3622-03  
 Misc :  
 ALS Vial : 21 Sample Multiplier: 1

Integration File: autoint1.e  
 Quant Time: Jul 06 07:16:29 2019  
 Quant Method : Z:\pestpcbsrv\HPCHEM1\FID\_C\Method\Alaphatic EPH 061219.M  
 Quant Title : GC Extractables  
 QLast Update : Thu Jun 13 07:03:58 2019  
 Response via : Initial Calibration  
 Integrator: ChemStation 6890 Scale Mode: Large solvent peaks clipped

Volume Inj. : 1 ul  
 Signal Phase : Rxi-1ms  
 Signal Info : 20M x 0.18mm x 0.18um

Compound	R.T.	Response	Conc Units
System Monitoring Compounds			
9) S ortho-Terphenyl (SURR)	11.697	4435627	33.340 ug/ml
Spiked Amount	50.000	Recovery	= 66.68%
12) S 1-chlorooctadecane (S...	13.120	4654957	42.363 ug/ml
Spiked Amount	50.000	Recovery	= 84.73%

Target Compounds

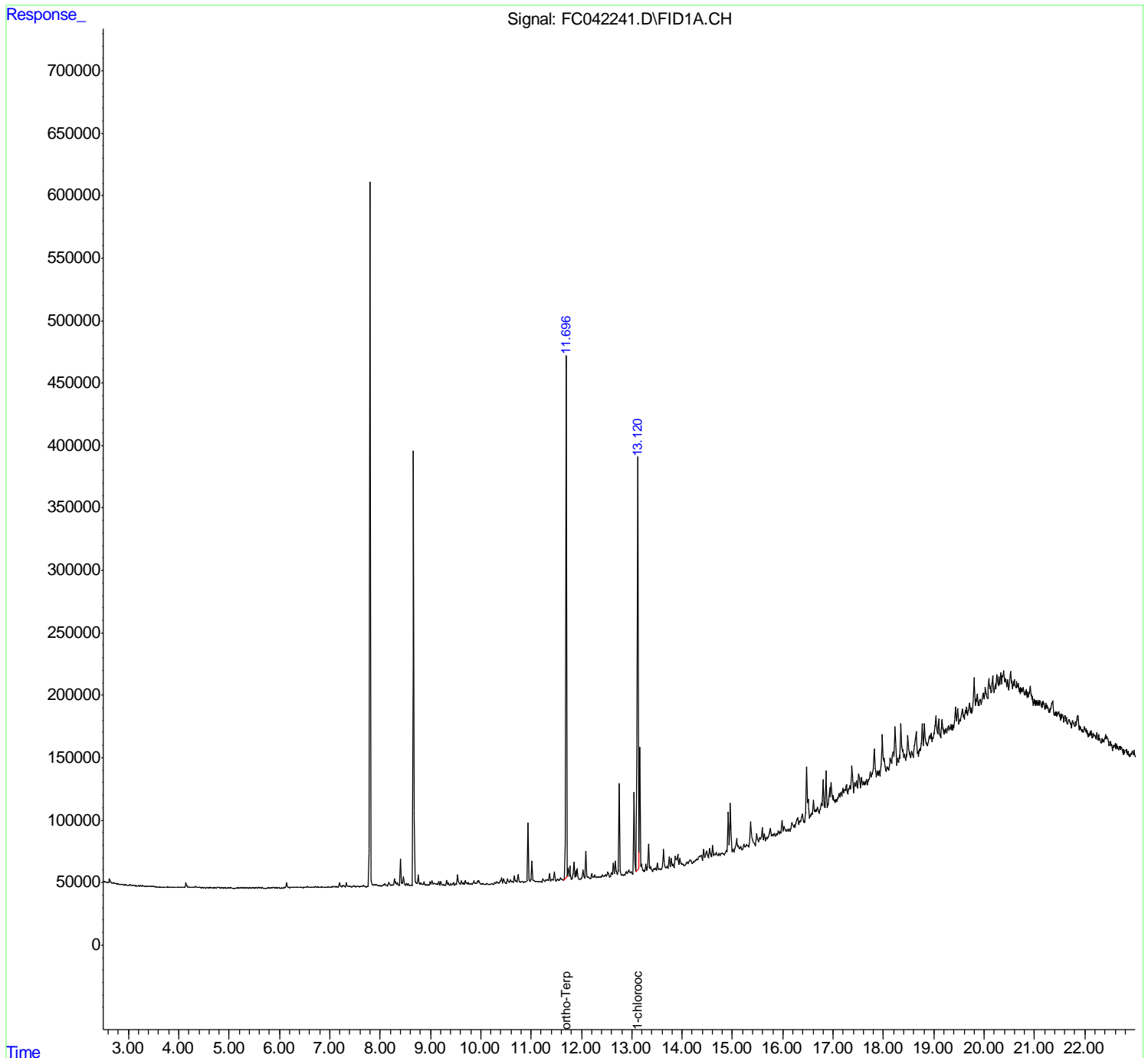
(f)=RT Delta > 1/2 Window

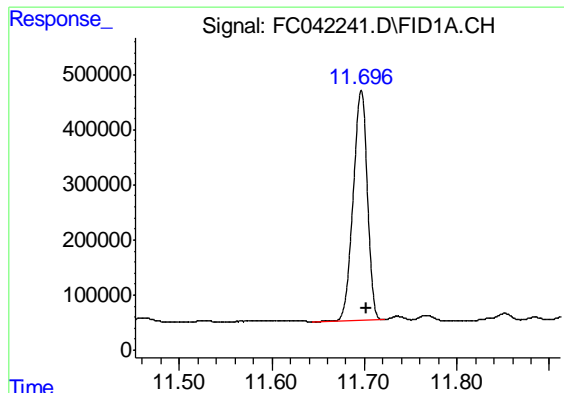
(m)=manual int.

Data Path : Z:\pestpcbsrv\HPCHEM1\FID\_C\Data\FC070519AL\  
Data File : FC042241.D  
Signal(s) : FID1A.CH  
Acq On : 05 Jul 2019 23:03  
Operator : DD\AJ  
Sample : K3622-03  
Misc :  
ALS Vial : 21 Sample Multiplier: 1

Integration File: autoint1.e  
Quant Time: Jul 06 07:16:29 2019  
Quant Method : Z:\pestpcbsrv\HPCHEM1\FID\_C\Method\Alaphatic EPH 061219.M  
Quant Title : GC Extractables  
QLast Update : Thu Jun 13 07:03:58 2019  
Response via : Initial Calibration  
Integrator: ChemStation 6890 Scale Mode: Large solvent peaks clipped

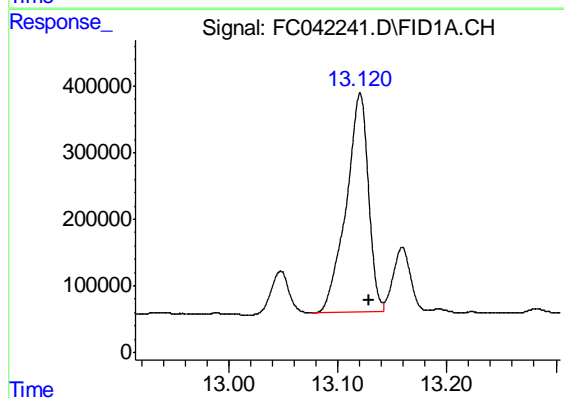
Volume Inj. : 1 ul  
Signal Phase : Rxi-1ms  
Signal Info : 20M x 0.18mm x 0.18um





#9 ortho-Terphenyl (SURR)

R.T.: 11.697 min  
Delta R.T.: -0.005 min  
Response: 4435627  
Conc: 33.34 ug/ml



#12 1-chlorooctadecane (SURR)

R.T.: 13.120 min  
Delta R.T.: -0.008 min  
Response: 4654957  
Conc: 42.36 ug/ml