

Data Path : Z:\pestpcbsrv\HPCHEM1\FID_C\Data\FC070620AL\
 Data File : FC048262.D
 Signal(s) : FID1A.CH
 Acq On : 06 Jul 2020 20:08
 Operator : DD\AJ
 Sample : L3202-01DL 2X
 Misc :
 ALS Vial : 12 Sample Multiplier: 1

Integration File: autoint1.e
 Quant Time: Jul 07 01:06:07 2020
 Quant Method : Z:\pestpcbsrv\HPCHEM1\FID_C\Method\Alaphatic EPH 060920.M
 Quant Title : GC Extractables
 QLast Update : Wed Jun 10 08:39:57 2020
 Response via : Initial Calibration
 Integrator: ChemStation 6890 Scale Mode: Large solvent peaks clipped

Volume Inj. : 1 ul
 Signal Phase : Rxi-1ms
 Signal Info : 20M x 0.18mm x 0.18um

Compound	R.T.	Response	Conc Units

System Monitoring Compounds			
9) S ortho-Terphenyl (SURR)	11.716	2245933	18.723 ug/ml
Spiked Amount	50.000	Recovery =	37.45%
12) S 1-chlorooctadecane (S...	13.128	1742163	17.789 ug/ml
Spiked Amount	50.000	Recovery =	35.58%
Target Compounds			
18) T n-Dotriacontane (C32)	18.665	50420	0.509 ug/ml
19) T n-Tetratriacontane (C34)	19.447	296303	3.235 ug/ml
20) T n-Hexatriacontane (C36)	20.177	403125	4.701 ug/ml
21) T n-Octatriacontane (C38)	20.901	832896	10.459 ug/ml
22) T n-Tetracontane (C40)	21.865	366977	4.641 ug/ml

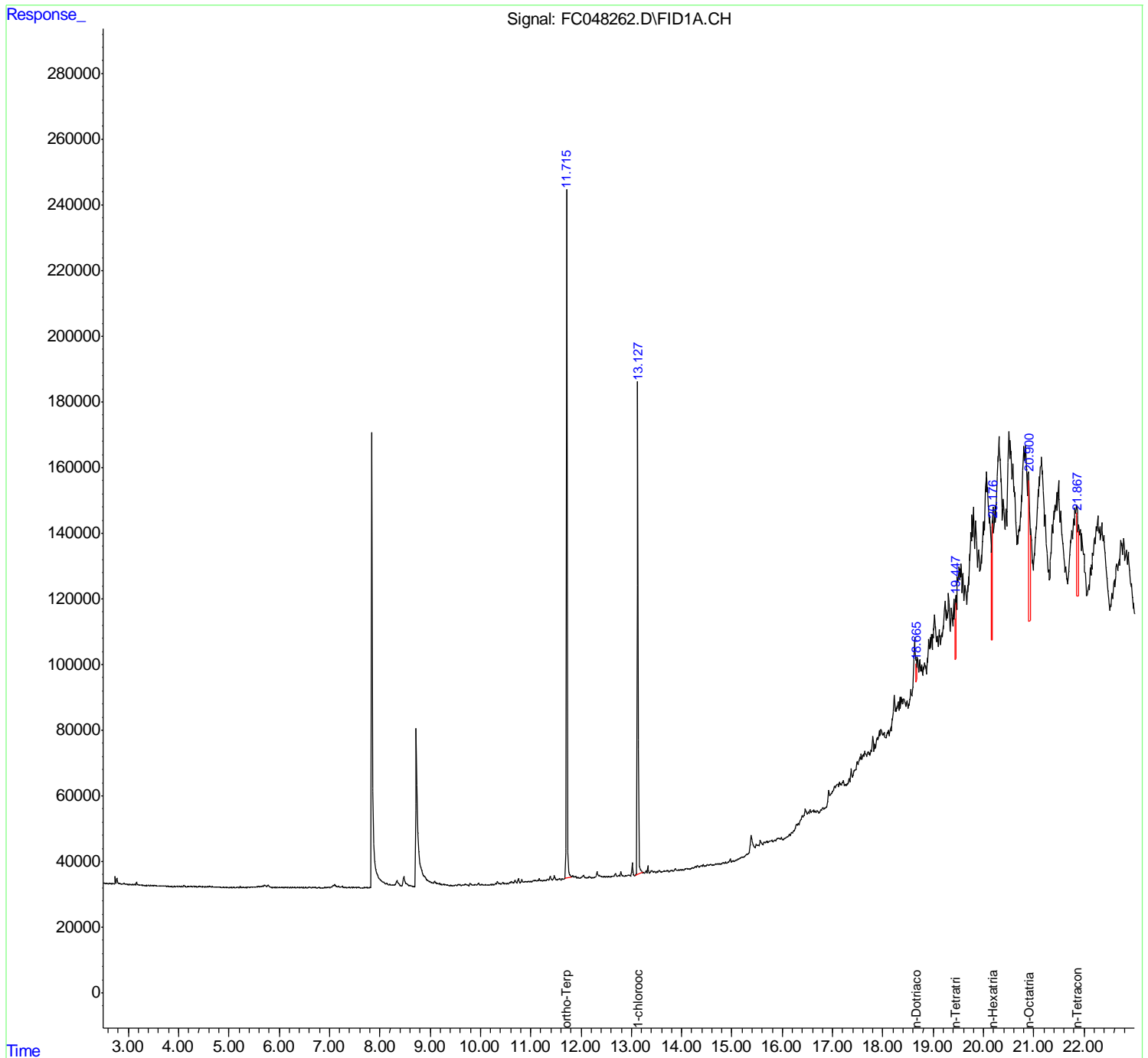
(f)=RT Delta > 1/2 Window

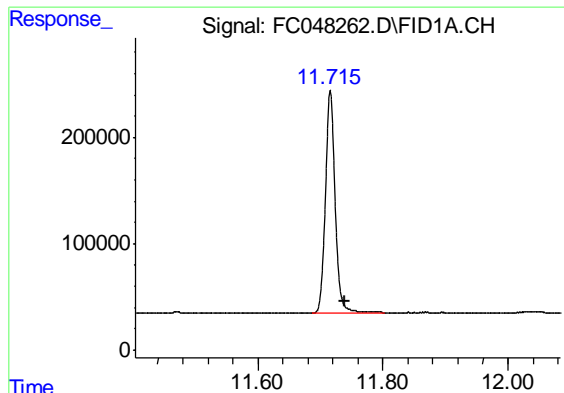
(m)=manual int.

Data Path : Z:\pestpcbsrv\HPCHEM1\FID_C\Data\FC070620AL\
 Data File : FC048262.D
 Signal(s) : FID1A.CH
 Acq On : 06 Jul 2020 20:08
 Operator : DD\AJ
 Sample : L3202-01DL 2X
 Misc :
 ALS Vial : 12 Sample Multiplier: 1

Integration File: autoint1.e
 Quant Time: Jul 07 01:06:07 2020
 Quant Method : Z:\pestpcbsrv\HPCHEM1\FID_C\Method\Aliphatic EPH 060920.M
 Quant Title : GC Extractables
 QLast Update : Wed Jun 10 08:39:57 2020
 Response via : Initial Calibration
 Integrator: ChemStation 6890 Scale Mode: Large solvent peaks clipped

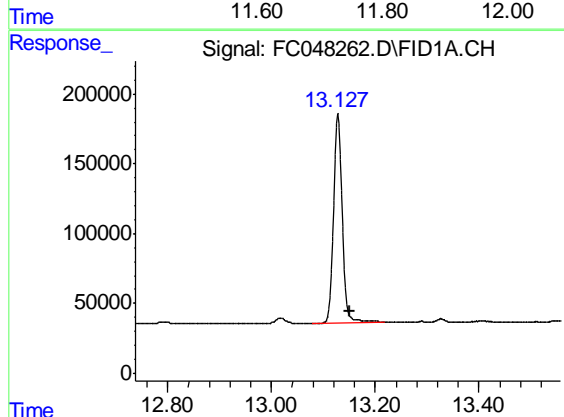
Volume Inj. : 1 ul
 Signal Phase : Rxi-1ms
 Signal Info : 20M x 0.18mm x 0.18um





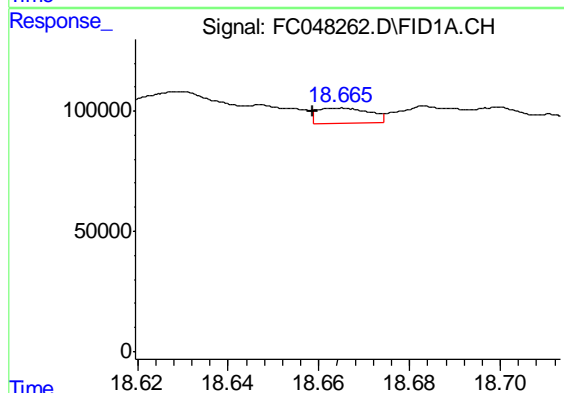
#9 ortho-Terphenyl (SURR)

R.T.: 11.716 min
 Delta R.T.: -0.023 min
 Response: 2245933
 Conc: 18.72 ug/ml



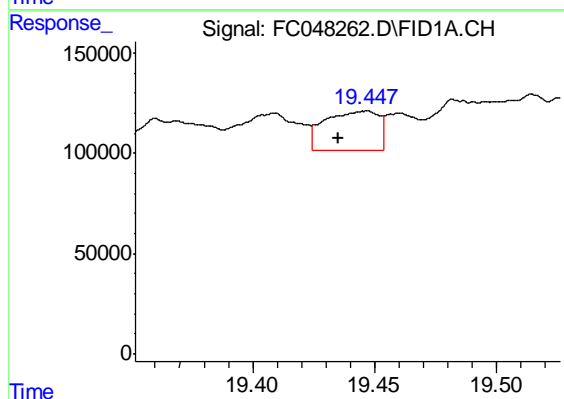
#12 1-chlorooctadecane (SURR)

R.T.: 13.128 min
 Delta R.T.: -0.022 min
 Response: 1742163
 Conc: 17.79 ug/ml



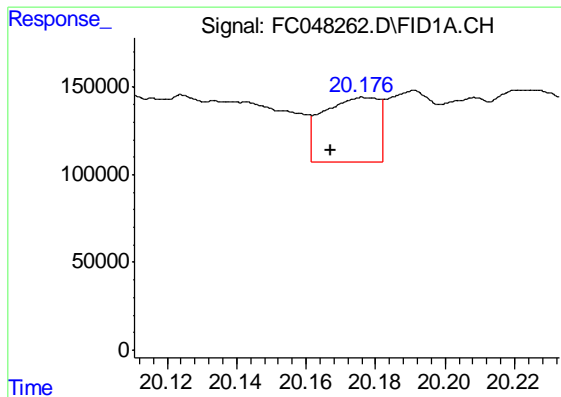
#18 n-Dotriacontane (C32)

R.T.: 18.665 min
 Delta R.T.: 0.006 min
 Response: 50420
 Conc: 0.51 ug/ml



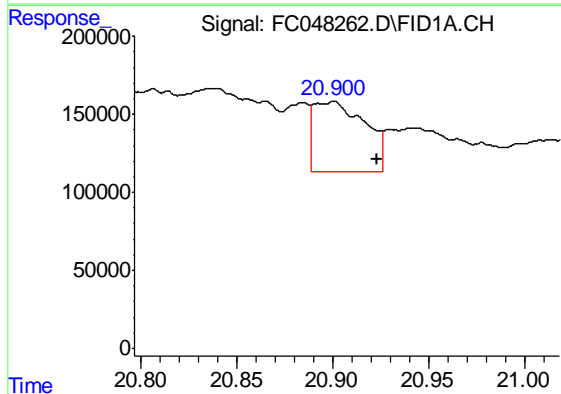
#19 n-Tetratriacontane (C34)

R.T.: 19.447 min
 Delta R.T.: 0.011 min
 Response: 296303
 Conc: 3.24 ug/ml



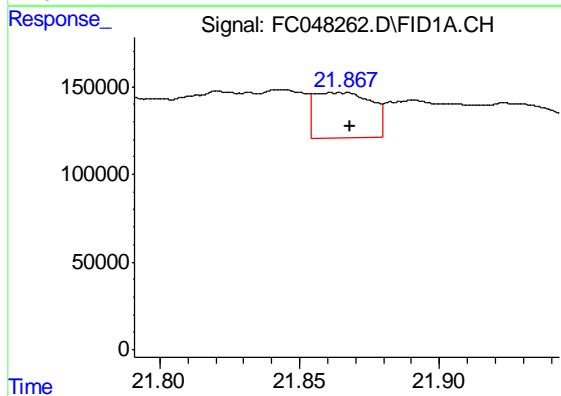
#20 n-Hexatriacontane (C36)

R.T.: 20.177 min
Delta R.T.: 0.010 min
Response: 403125
Conc: 4.70 ug/ml



#21 n-Octatriacontane (C38)

R.T.: 20.901 min
Delta R.T.: -0.022 min
Response: 832896
Conc: 10.46 ug/ml



#22 n-Tetracontane (C40)

R.T.: 21.865 min
Delta R.T.: -0.003 min
Response: 366977
Conc: 4.64 ug/ml