

Data Path : Z:\pestpcbsrv\HPCHEM1\FID_C\Data\FC070721AL\
 Data File : FC054566.D
 Signal(s) : FID1A.CH
 Acq On : 07 Jul 2021 19:05
 Operator : DD\AJ
 Sample : M2926-08
 Misc :
 ALS Vial : 13 Sample Multiplier: 1

Instrument :
 FID_C
 ClientSampleId :

Integration File: autoint1.e
 Quant Time: Jul 08 02:41:17 2021
 Quant Method : Z:\pestpcbsrv\HPCHEM1\FID_C\Method\Alaphatic EPH 062521.M
 Quant Title : GC Extractables
 QLast Update : Sat Jun 26 02:10:35 2021
 Response via : Initial Calibration
 Integrator: ChemStation 6890 Scale Mode: Large solvent peaks clipped

Volume Inj. : 1 ul
 Signal Phase : Rxi-1ms
 Signal Info : 20M x 0.18mm x 0.18um

Compound	R.T.	Response	Conc Units

System Monitoring Compounds			
9) S ortho-Terphenyl (SURR)	11.329	4991323	35.257 ug/ml
Spiked Amount	50.000	Recovery	= 70.51%
12) S 1-chlorooctadecane (S...	12.772	3922381	35.186 ug/ml
Spiked Amount	50.000	Recovery	= 70.37%
Target Compounds			
3) T A~Naphthalene (C11.7)	5.835f	329761	2.508 ug/ml

(f)=RT Delta > 1/2 Window

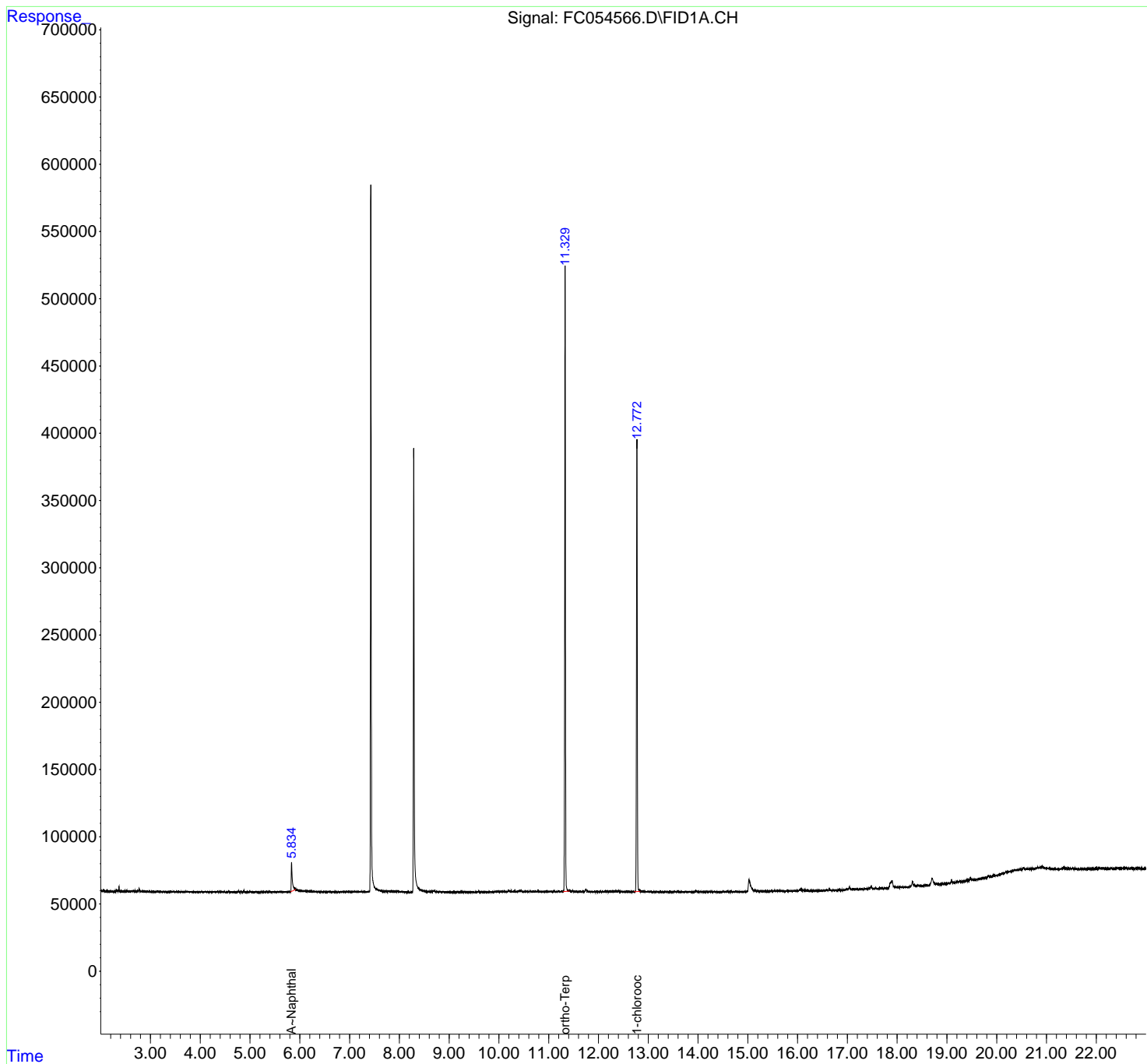
(m)=manual int.

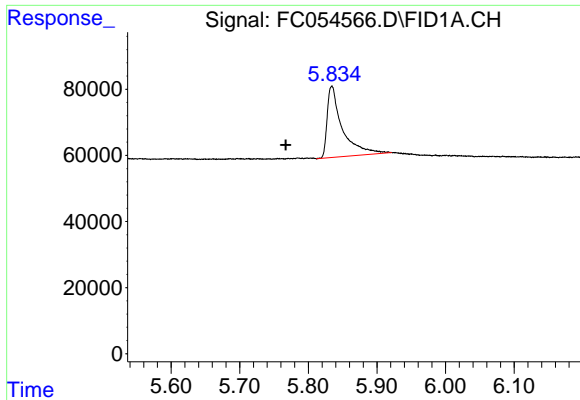
Data Path : Z:\pestpcbsrv\HPCHEM1\FID_C\Data\FC070721AL\
 Data File : FC054566.D
 Signal(s) : FID1A.CH
 Acq On : 07 Jul 2021 19:05
 Operator : DD\AJ
 Sample : M2926-08
 Misc :
 ALS Vial : 13 Sample Multiplier: 1

Instrument :
 FID_C
 ClientSampleId :

Integration File: autoint1.e
 Quant Time: Jul 08 02:41:17 2021
 Quant Method : Z:\pestpcbsrv\HPCHEM1\FID_C\Method\Alaphatic EPH 062521.M
 Quant Title : GC Extractables
 QLast Update : Sat Jun 26 02:10:35 2021
 Response via : Initial Calibration
 Integrator: ChemStation 6890 Scale Mode: Large solvent peaks clipped

Volume Inj. : 1 ul
 Signal Phase : Rxi-1ms
 Signal Info : 20M x 0.18mm x 0.18um

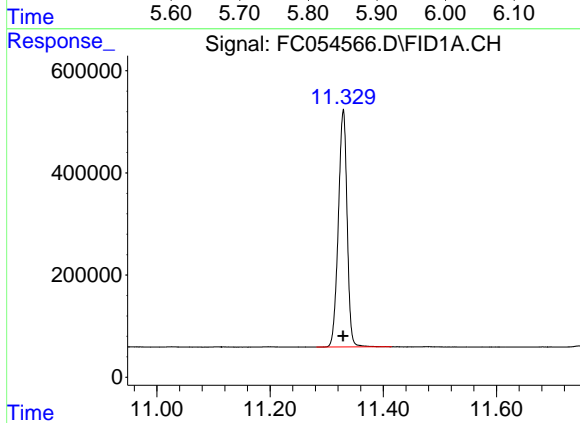




#3 A~Naphthalene (C11.7)

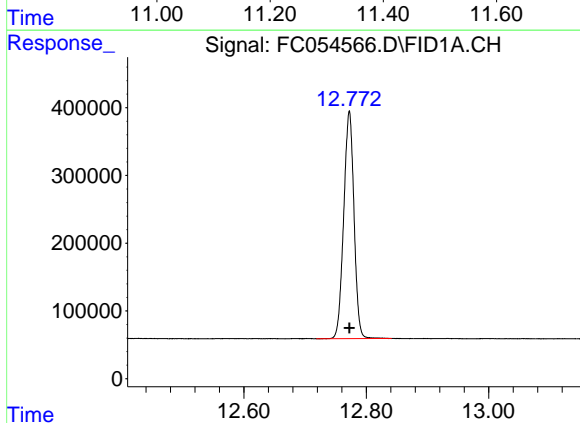
R.T.: 5.835 min
Delta R.T.: 0.068 min
Response: 329761
Conc: 2.51 ug/ml

Instrument :
FID_C
ClientSampleId :



#9 ortho-Terphenyl (SURR)

R.T.: 11.329 min
Delta R.T.: 0.000 min
Response: 4991323
Conc: 35.26 ug/ml



#12 1-chlorooctadecane (SURR)

R.T.: 12.772 min
Delta R.T.: 0.000 min
Response: 3922381
Conc: 35.19 ug/ml