

Data Path : Z:\pestpcbsrv\HPCHEM1\FID_C\Data\FC070821AL\
 Data File : FC054607.D
 Signal(s) : FID1A.CH
 Acq On : 08 Jul 2021 23:34
 Operator : DD\AJ
 Sample : M2956-01
 Misc :
 ALS Vial : 11 Sample Multiplier: 1

Integration File: sample.E
 Quant Time: Jul 09 03:34:02 2021
 Quant Method : Z:\pestpcbsrv\HPCHEM1\FID_C\Method\Alaphatic EPH 062521.M
 Quant Title : GC Extractables
 QLast Update : Sat Jun 26 02:10:35 2021
 Response via : Initial Calibration
 Integrator: ChemStation 6890 Scale Mode: Large solvent peaks clipped

Volume Inj. : 1 ul
 Signal Phase : Rxi-1ms
 Signal Info : 20M x 0.18mm x 0.18um

Compound	R.T.	Response	Conc Units

System Monitoring Compounds			
9) S ortho-Terphenyl (SURR)	11.329	4812699	33.995 ug/ml
Spiked Amount	50.000	Recovery	= 67.99%
12) S 1-chlorooctadecane (S...	12.771	5427824	48.691 ug/ml
Spiked Amount	50.000	Recovery	= 97.38%

Target Compounds

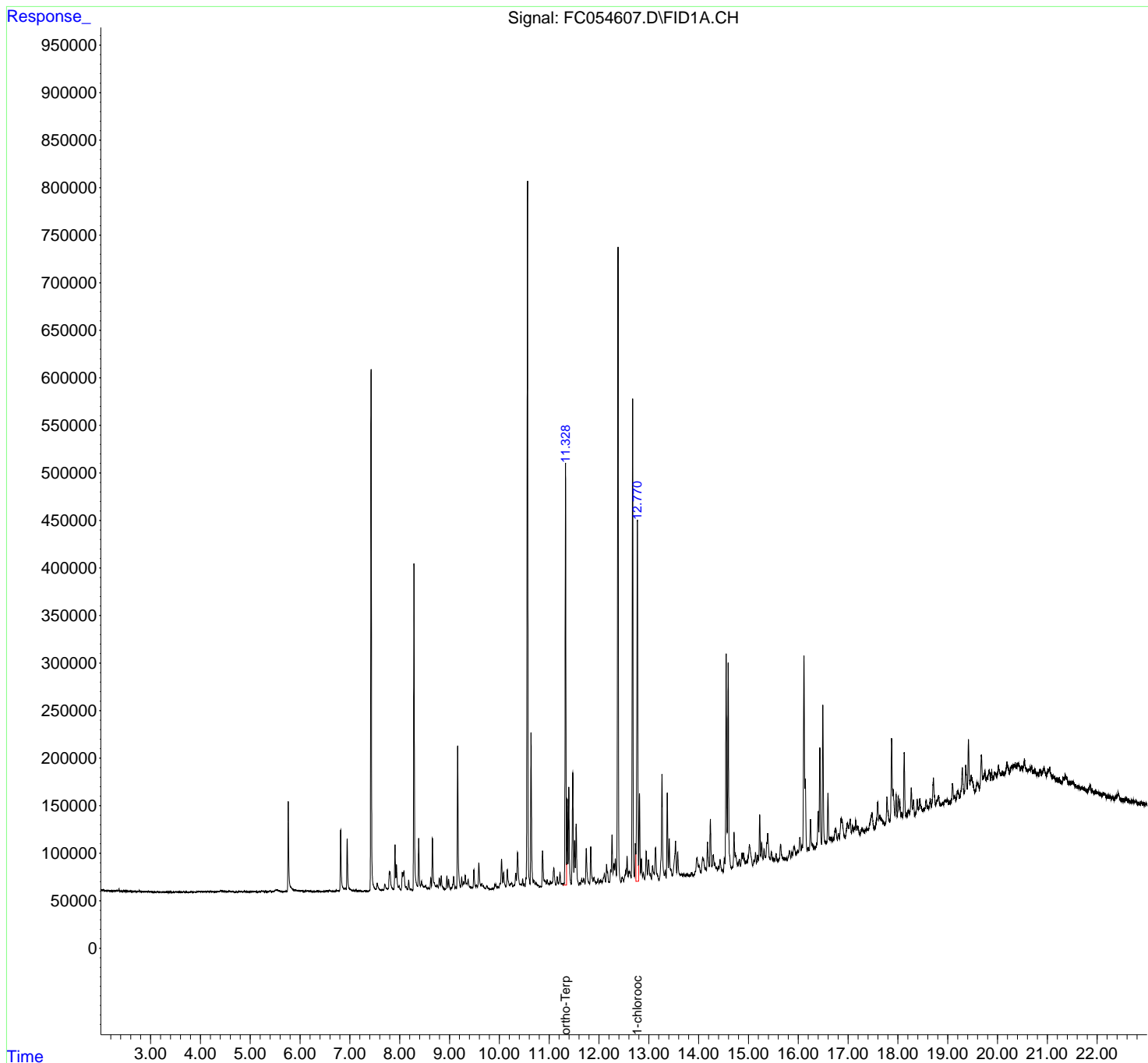
(f)=RT Delta > 1/2 Window

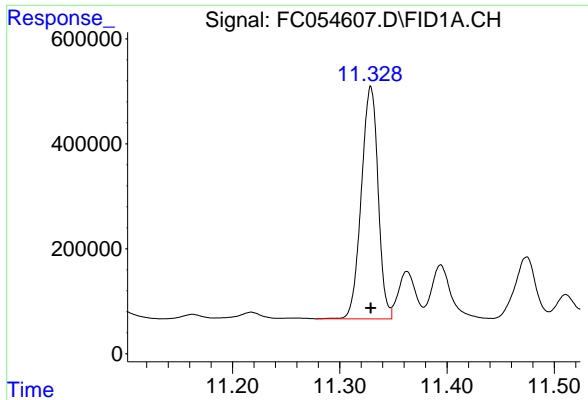
(m)=manual int.

Data Path : Z:\pestpcbsrv\HPCHEM1\FID_C\Data\FC070821AL\
Data File : FC054607.D
Signal(s) : FID1A.CH
Acq On : 08 Jul 2021 23:34
Operator : DD\AJ
Sample : M2956-01
Misc :
ALS Vial : 11 Sample Multiplier: 1

Integration File: sample.E
Quant Time: Jul 09 03:34:02 2021
Quant Method : Z:\pestpcbsrv\HPCHEM1\FID_C\Method\Alaphatic EPH 062521.M
Quant Title : GC Extractables
QLast Update : Sat Jun 26 02:10:35 2021
Response via : Initial Calibration
Integrator: ChemStation 6890 Scale Mode: Large solvent peaks clipped

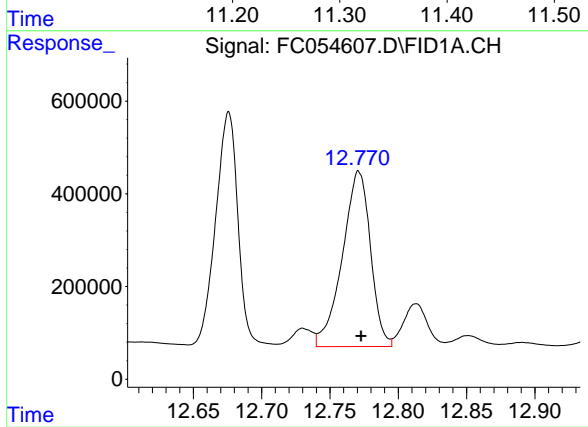
Volume Inj. : 1 ul
Signal Phase : Rxi-1ms
Signal Info : 20M x 0.18mm x 0.18um





#9 ortho-Terphenyl (SURR)

R.T.: 11.329 min
Delta R.T.: 0.000 min
Response: 4812699
Conc: 34.00 ug/ml



#12 1-chlorooctadecane (SURR)

R.T.: 12.771 min
Delta R.T.: -0.002 min
Response: 5427824
Conc: 48.69 ug/ml