

Data Path : Z:\pestpcbsrv\HPCHEM1\FID_C\Data\FC071023AL\
 Data File : FC064071.D
 Signal(s) : FID1A.ch
 Acq On : 10 Jul 2023 08:39
 Operator : YP/AJ
 Sample : MECL2
 Misc :
 ALS Vial : 1 Sample Multiplier: 1

Instrument :
 FID_C
 ClientSampleId :

Integration File: autoint1.e
 Quant Time: Jul 11 02:55:26 2023
 Quant Method : Z:\pestpcbsrv\HPCHEM1\FID_C\Method\Aliphatic EPH 062423.M
 Quant Title : GC Extractables
 QLast Update : Sun Jun 25 04:03:48 2023
 Response via : Initial Calibration
 Integrator: ChemStation

Volume Inj. : 1 ul
 Signal Phase : Rxi-1ms
 Signal Info : 20M x 0.18mm x 0.18um

Compound	R.T.	Response	Conc Units

System Monitoring Compounds			
Target Compounds			
11) T n-Heneicosane (C21)	13.111	457447	2.855 ug/ml
13) T n-Docosane (C22)	13.700	339096	2.158 ug/ml
14) T n-Tetracosane (C24)	14.806	252509	1.602 ug/ml
15) T n-Hexacosane (C26)	15.825	206491	1.367 ug/ml
16) T n-Octacosane (C28)	16.772	123185	0.818 ug/ml
17) T n-Tricontane (C30)	17.657	133202	0.853 ug/ml
18) T n-Dotriacontane (C32)	18.487	323286	2.046 ug/ml
19) T n-Tetratriacontane (C34)	19.265	266850	1.734 ug/ml
20) T n-Hexatriacontane (C36)	20.005	155171	1.051 ug/ml

(f)=RT Delta > 1/2 Window

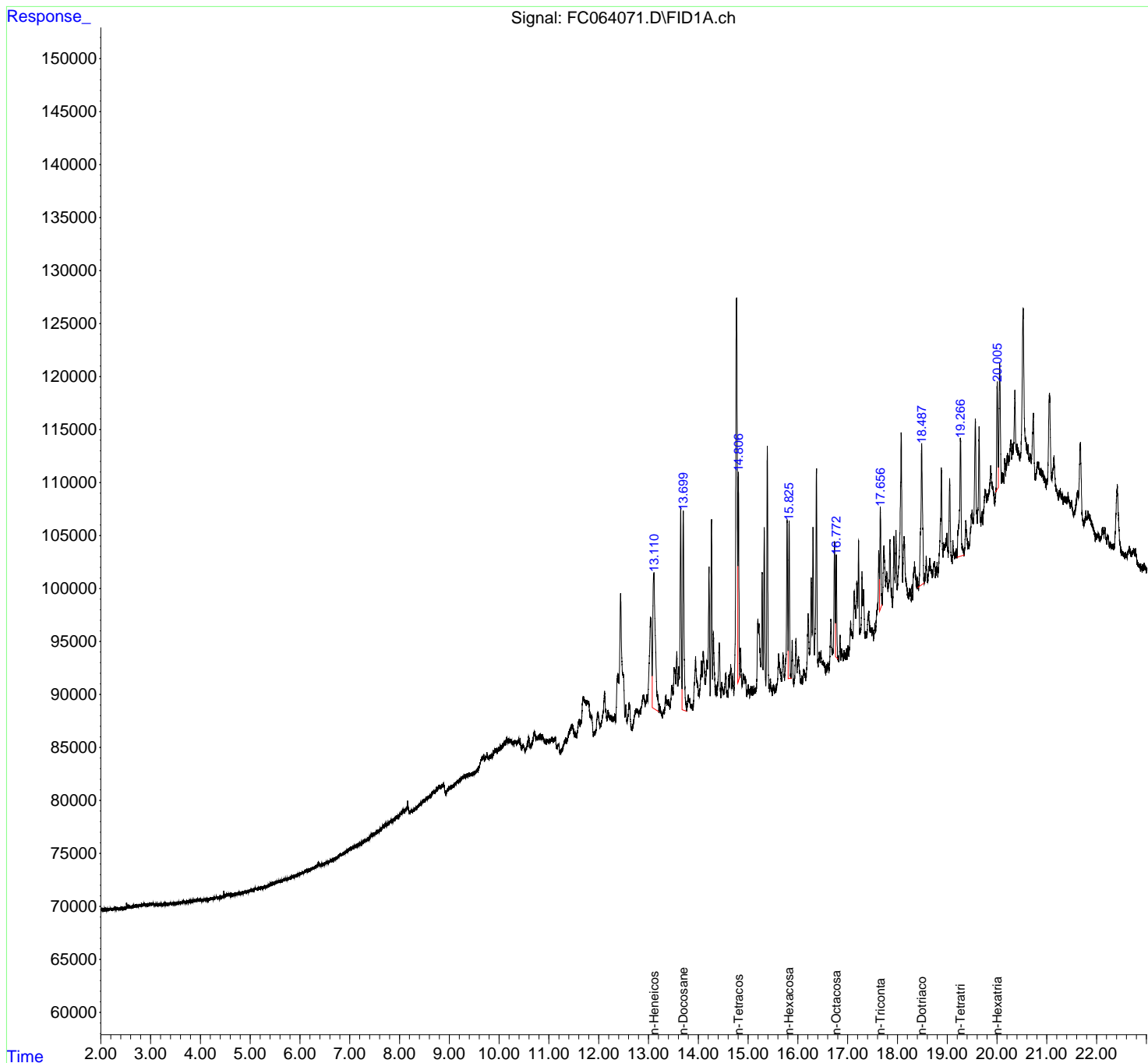
(m)=manual int.

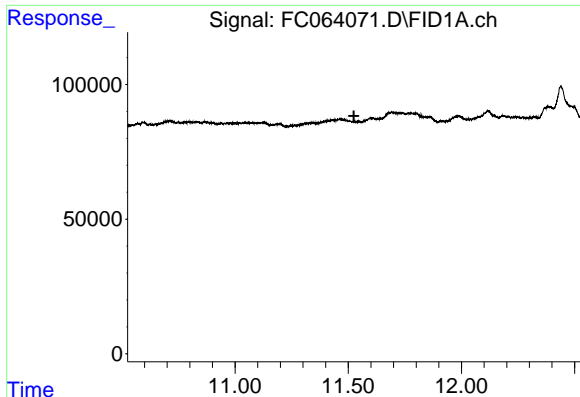
Data Path : Z:\pestpcbsrv\HPCHEM1\FID_C\Data\FC071023AL\
 Data File : FC064071.D
 Signal(s) : FID1A.ch
 Acq On : 10 Jul 2023 08:39
 Operator : YP/AJ
 Sample : MECL2
 Misc :
 ALS Vial : 1 Sample Multiplier: 1

Instrument :
 FID_C
 ClientSampleId :

Integration File: autoint1.e
 Quant Time: Jul 11 02:55:26 2023
 Quant Method : Z:\pestpcbsrv\HPCHEM1\FID_C\Method\Aliphatic EPH 062423.M
 Quant Title : GC Extractables
 QLast Update : Sun Jun 25 04:03:48 2023
 Response via : Initial Calibration
 Integrator: ChemStation

Volume Inj. : 1 ul
 Signal Phase : Rxi-1ms
 Signal Info : 20M x 0.18mm x 0.18um

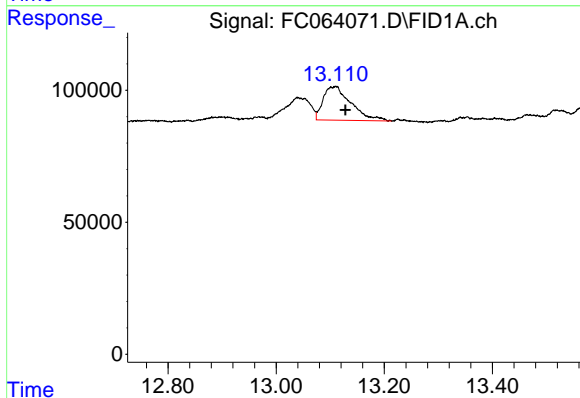




#9 ortho-Terphenyl (SURR)

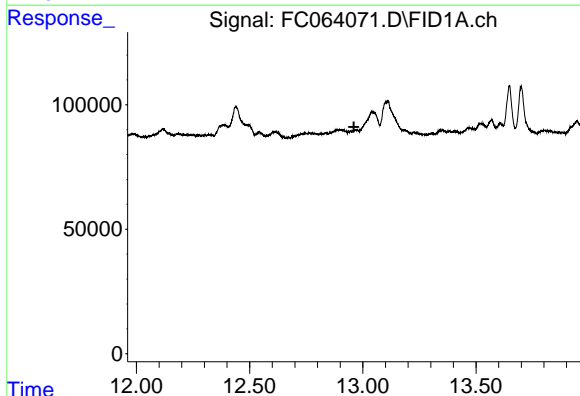
R.T.: 0.000 min
 Exp R.T.: 11.525 min
 Response: 0
 Conc: N.D.

Instrument :
 FID_C
 ClientSampleId :



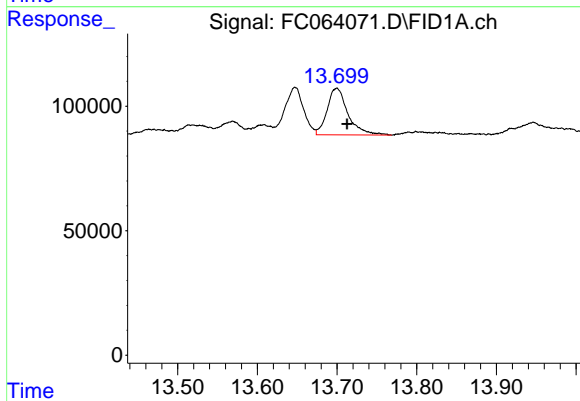
#11 n-Heneicosane (C21)

R.T.: 13.111 min
 Delta R.T.: -0.017 min
 Response: 457447
 Conc: 2.86 ug/ml



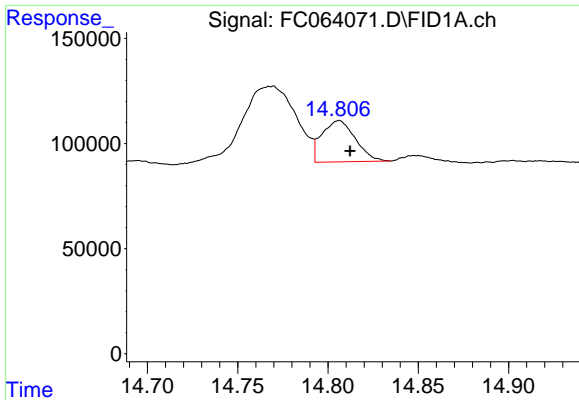
#12 1-chlorooctadecane (SURR)

R.T.: 0.000 min
 Exp R.T.: 12.961 min
 Response: 0
 Conc: N.D.



#13 n-Docosane (C22)

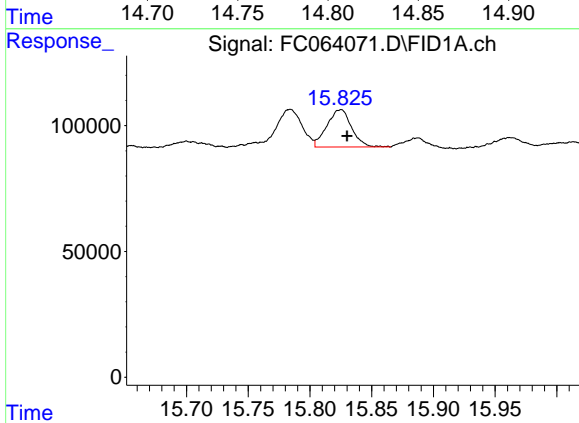
R.T.: 13.700 min
 Delta R.T.: -0.013 min
 Response: 339096
 Conc: 2.16 ug/ml



#14 n-Tetracosane (C24)

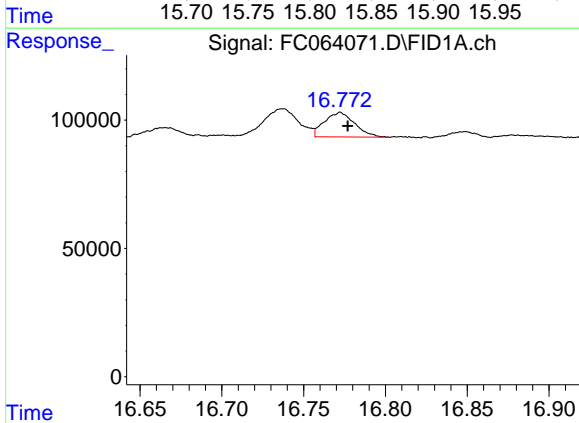
R.T.: 14.806 min
 Delta R.T.: -0.006 min
 Response: 252509
 Conc: 1.60 ug/ml

Instrument :
 FID_C
 ClientSampleId :



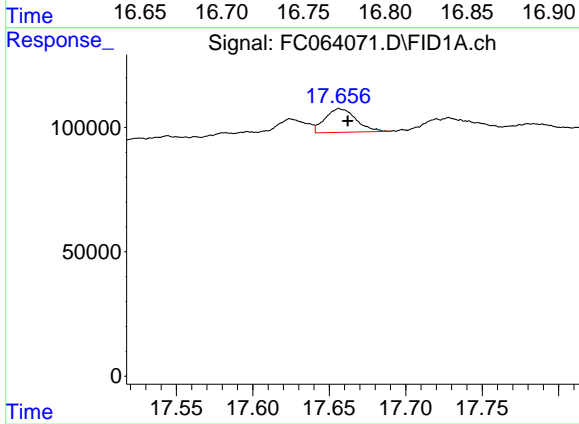
#15 n-Hexacosane (C26)

R.T.: 15.825 min
 Delta R.T.: -0.005 min
 Response: 206491
 Conc: 1.37 ug/ml



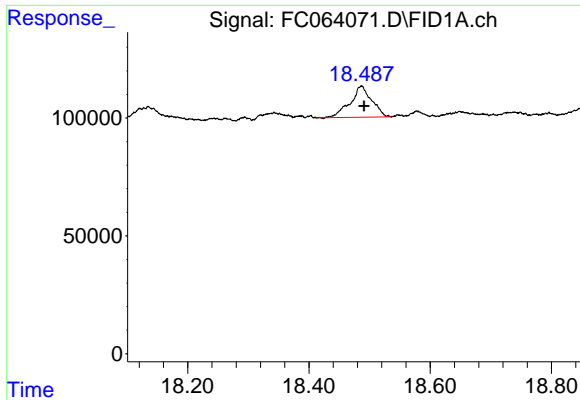
#16 n-Octacosane (C28)

R.T.: 16.772 min
 Delta R.T.: -0.004 min
 Response: 123185
 Conc: 0.82 ug/ml



#17 n-Tricontane (C30)

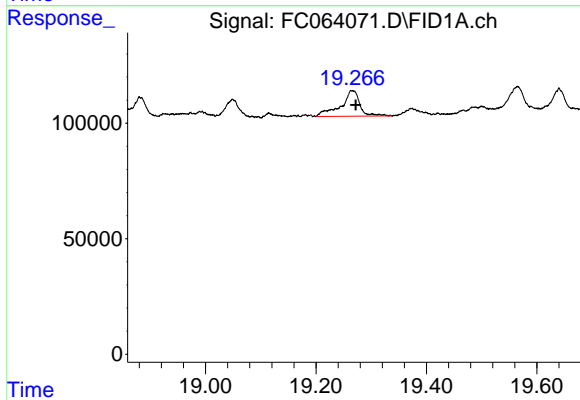
R.T.: 17.657 min
 Delta R.T.: -0.005 min
 Response: 133202
 Conc: 0.85 ug/ml



#18 n-Dotriacontane (C32)

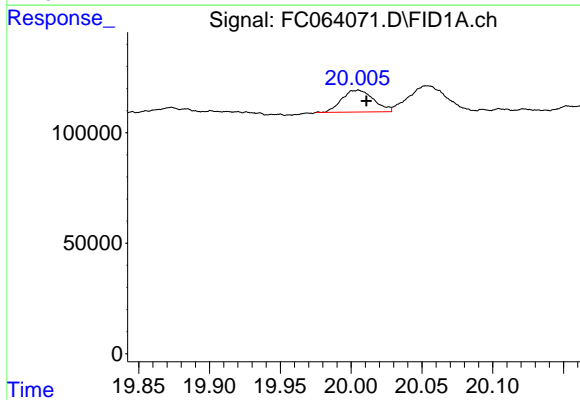
R.T.: 18.487 min
 Delta R.T.: -0.004 min
 Response: 323286
 Conc: 2.05 ug/ml

Instrument :
 FID_C
 ClientSampleId :



#19 n-Tetraatriacontane (C34)

R.T.: 19.265 min
 Delta R.T.: -0.007 min
 Response: 266850
 Conc: 1.73 ug/ml



#20 n-Hexatriacontane (C36)

R.T.: 20.005 min
 Delta R.T.: -0.006 min
 Response: 155171
 Conc: 1.05 ug/ml