

Data Path : Z:\pestpcbsrv\HPCHEM1\FID_C\Data\FC071120AL\
 Data File : FC048373.D
 Signal(s) : FID1A.CH
 Acq On : 11 Jul 2020 13:44
 Operator : DD\AJ
 Sample : 20 PPM ALIPHATIC HC STD
 Misc :
 ALS Vial : 2 Sample Multiplier: 1

Integration File: autoint1.e
 Quant Time: Jul 13 00:58:34 2020
 Quant Method : Z:\pestpcbsrv\HPCHEM1\FID_C\Method\Alaphatic EPH 070820.M
 Quant Title : GC Extractables
 QLast Update : Wed Jul 08 03:03:00 2020
 Response via : Initial Calibration
 Integrator: ChemStation 6890 Scale Mode: Large solvent peaks clipped

Volume Inj. : 1 ul
 Signal Phase : Rxi-1ms
 Signal Info : 20M x 0.18mm x 0.18um

Compound	R.T.	Response	Conc Units

System Monitoring Compounds			
9) S ortho-Terphenyl (SURR)	11.681	2907907	21.187 ug/ml
Spiked Amount	50.000	Recovery	= 42.37%
12) S 1-chlorooctadecane (S...	13.115	2341097	20.775 ug/ml
Spiked Amount	50.000	Recovery	= 41.55%
Target Compounds			
1) T n-Nonane (C9)	3.411	2632434	22.083 ug/ml
2) T n-Decane (C10)	4.485	2688377	22.334 ug/ml
3) T A~Naphthalene (C11.7)	6.081	3085254	22.927 ug/mlm
4) T n-Dodecane (C12)	6.512	2728922	22.306 ug/ml
5) T A~2-methylnaphthalene...	7.141	3098598	22.481 ug/ml
6) T n-Tetradecane (C14)	8.311	2717178	22.057 ug/ml
7) T n-Hexadecane (C16)	9.915	2666682	21.784 ug/ml
8) T n-Octadecane (C18)	11.358	2746361	21.459 ug/ml
10) T n-Eicosane (C20)	12.669	2730449	21.111 ug/ml
11) T n-Heneicosane (C21)	13.281	2703608	20.857 ug/ml
13) T n-Docosane (C22)	13.868	2679926	20.641 ug/ml
14) T n-Tetracosane (C24)	14.971	2630480	20.067 ug/ml
15) T n-Hexacosane (C26)	15.993	2551878	19.625 ug/ml
16) T n-Octacosane (C28)	16.942	2497049	19.110 ug/ml
17) T n-Tricontane (C30)	17.829	2416938	18.800 ug/ml
18) T n-Dotriacontane (C32)	18.662	2179324	18.447 ug/ml
19) T n-Tetratriacontane (C34)	19.446	1991180	17.839 ug/ml
20) T n-Hexatriacontane (C36)	20.184	1840075	17.495 ug/ml
21) T n-Octatriacontane (C38)	20.945	1729809	17.620 ug/ml
22) T n-Tetracontane (C40)	21.901	1783247	18.350 ug/ml

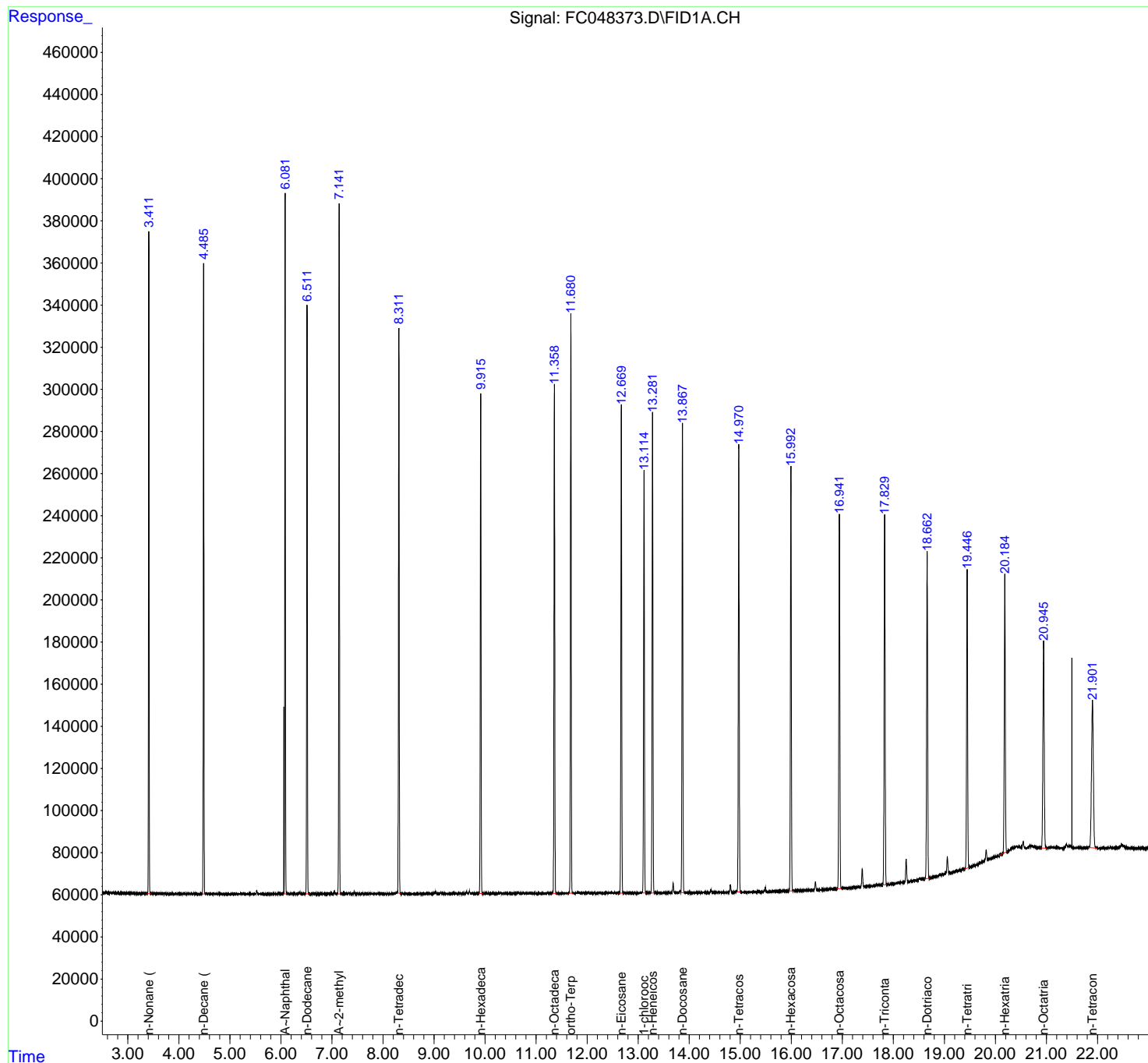
(f)=RT Delta > 1/2 Window

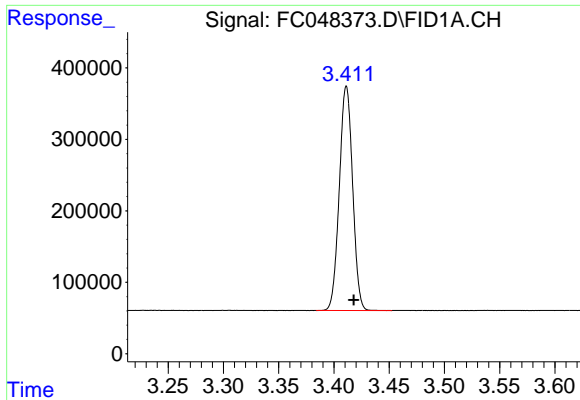
(m)=manual int.

Data Path : Z:\pestpcbsrv\HPCHEM1\FID_C\Data\FC071120AL\
Data File : FC048373.D
Signal(s) : FID1A.CH
Acq On : 11 Jul 2020 13:44
Operator : DD\AJ
Sample : 20 PPM ALIPHATIC HC STD
Misc :
ALS Vial : 2 Sample Multiplier: 1

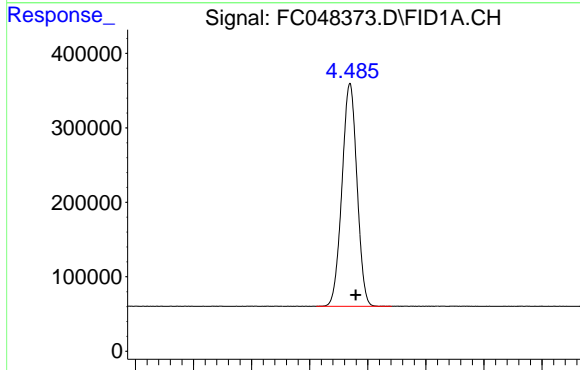
Integration File: autoint1.e
Quant Time: Jul 13 00:58:34 2020
Quant Method : Z:\pestpcbsrv\HPCHEM1\FID_C\Method\Aliphatic EPH 070820.M
Quant Title : GC Extractables
QLast Update : Wed Jul 08 03:03:00 2020
Response via : Initial Calibration
Integrator: ChemStation 6890 Scale Mode: Large solvent peaks clipped

Volume Inj. : 1 ul
Signal Phase : Rxi-1ms
Signal Info : 20M x 0.18mm x 0.18um

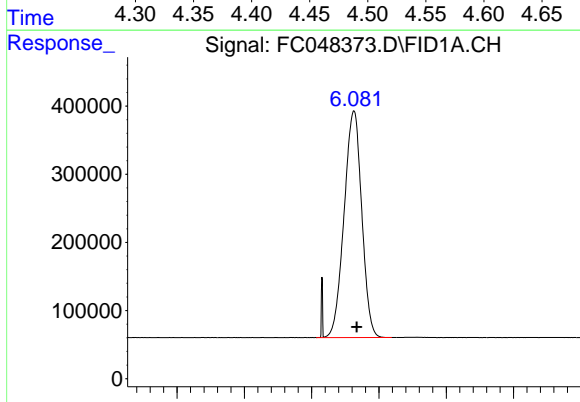




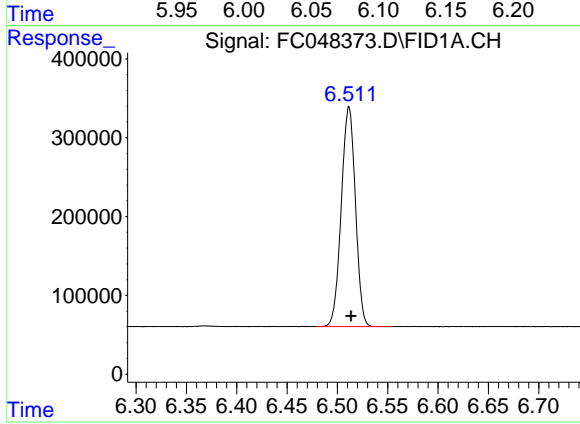
#1 n-Nonane (C9)
R.T.: 3.411 min
Delta R.T.: -0.007 min
Response: 2632434
Conc: 22.08 ug/ml



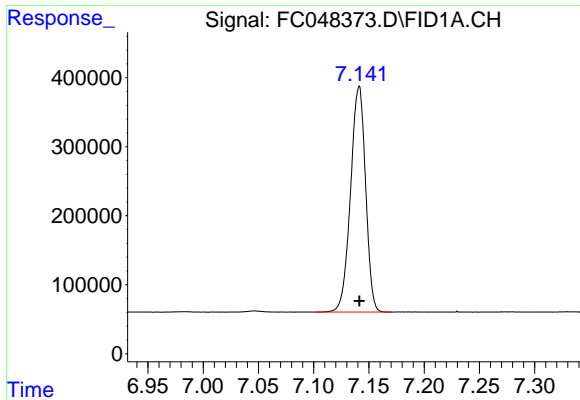
#2 n-Decane (C10)
R.T.: 4.485 min
Delta R.T.: -0.005 min
Response: 2688377
Conc: 22.33 ug/ml



#3 A~Naphthalene (C11.7)
R.T.: 6.081 min
Delta R.T.: -0.002 min
Response: 3085254
Conc: 22.93 ug/ml m

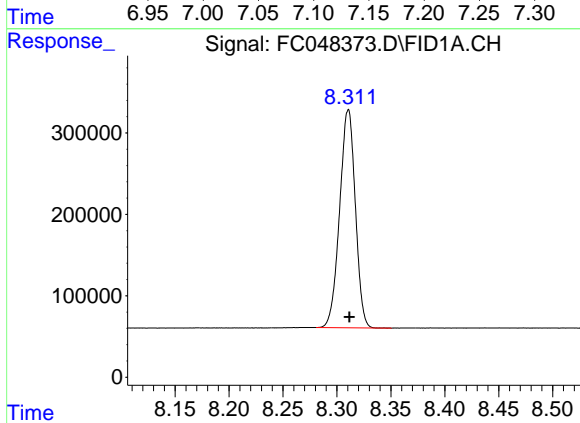


#4 n-Dodecane (C12)
R.T.: 6.512 min
Delta R.T.: -0.002 min
Response: 2728922
Conc: 22.31 ug/ml



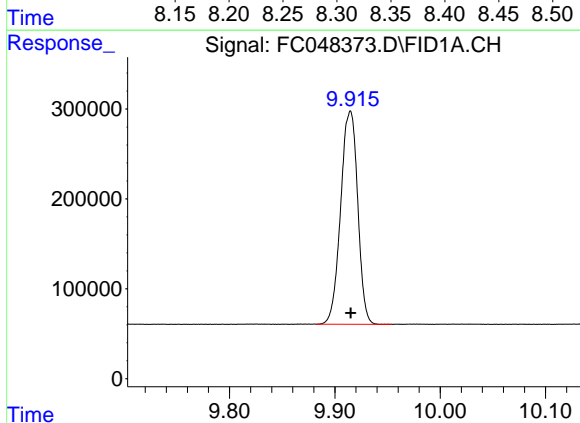
#5 A~2-methylnaphthalene (C12.89)

R.T.: 7.141 min
Delta R.T.: 0.000 min
Response: 3098598
Conc: 22.48 ug/ml



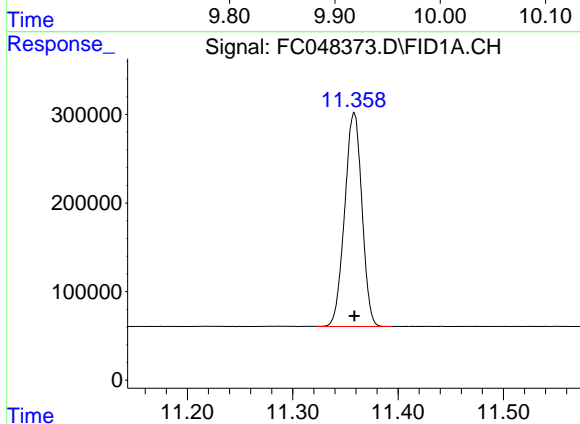
#6 n-Tetradecane (C14)

R.T.: 8.311 min
Delta R.T.: 0.000 min
Response: 2717178
Conc: 22.06 ug/ml



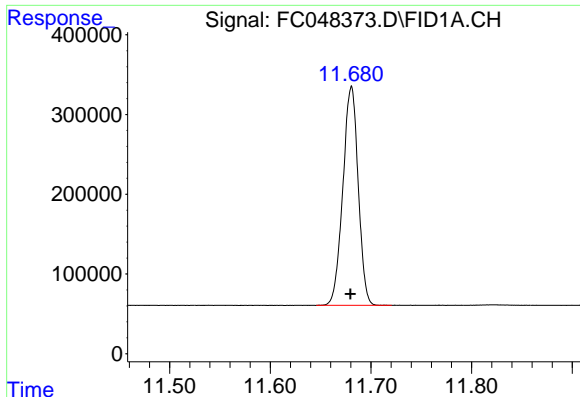
#7 n-Hexadecane (C16)

R.T.: 9.915 min
Delta R.T.: 0.000 min
Response: 2666682
Conc: 21.78 ug/ml



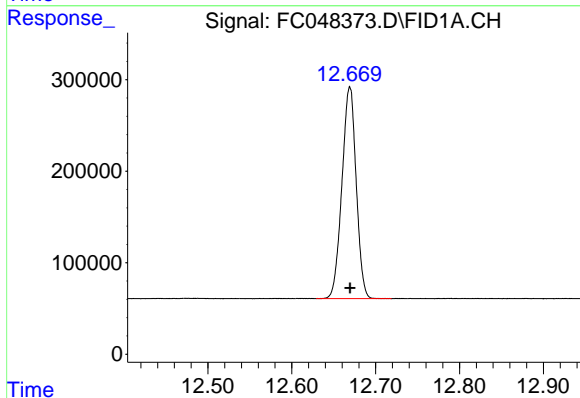
#8 n-Octadecane (C18)

R.T.: 11.358 min
Delta R.T.: 0.000 min
Response: 2746361
Conc: 21.46 ug/ml



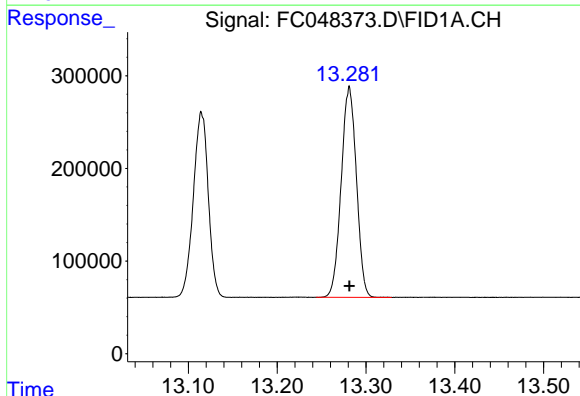
#9 ortho-Terphenyl (SURR)

R.T.: 11.681 min
 Delta R.T.: 0.000 min
 Response: 2907907
 Conc: 21.19 ug/ml



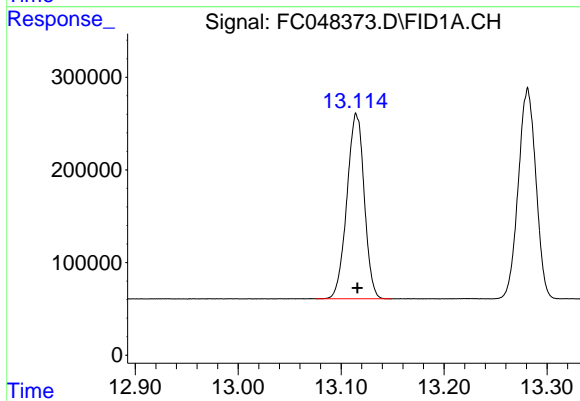
#10 n-Eicosane (C20)

R.T.: 12.669 min
 Delta R.T.: 0.000 min
 Response: 2730449
 Conc: 21.11 ug/ml



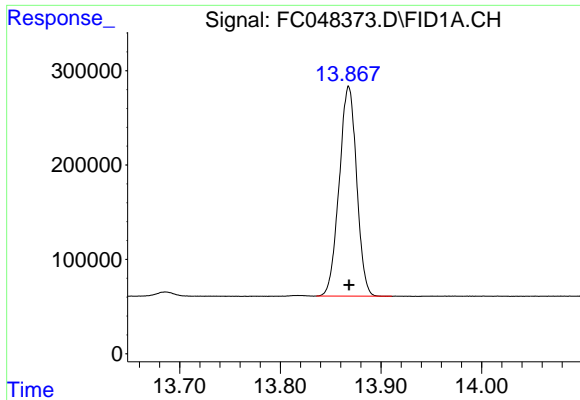
#11 n-Heneicosane (C21)

R.T.: 13.281 min
 Delta R.T.: 0.000 min
 Response: 2703608
 Conc: 20.86 ug/ml



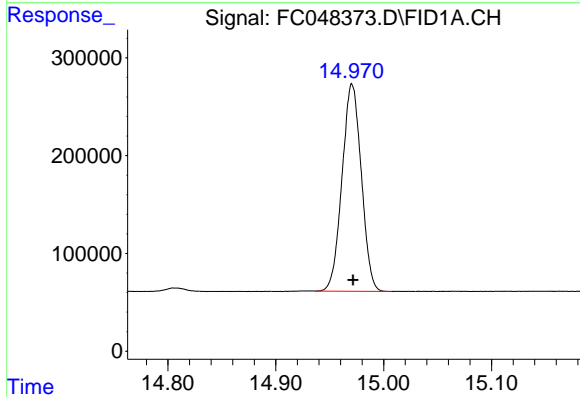
#12 1-chlorooctadecane (SURR)

R.T.: 13.115 min
 Delta R.T.: 0.000 min
 Response: 2341097
 Conc: 20.78 ug/ml



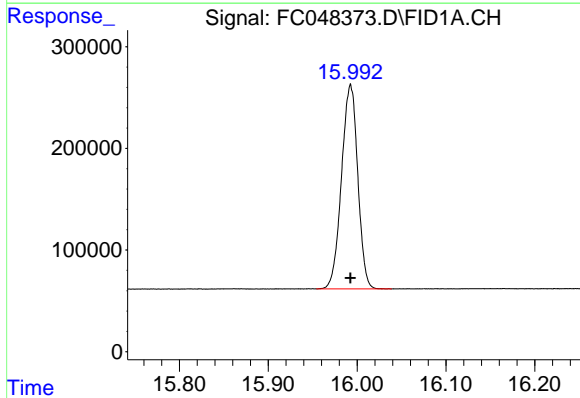
#13 n-Docosane (C22)

R.T.: 13.868 min
Delta R.T.: 0.000 min
Response: 2679926
Conc: 20.64 ug/ml



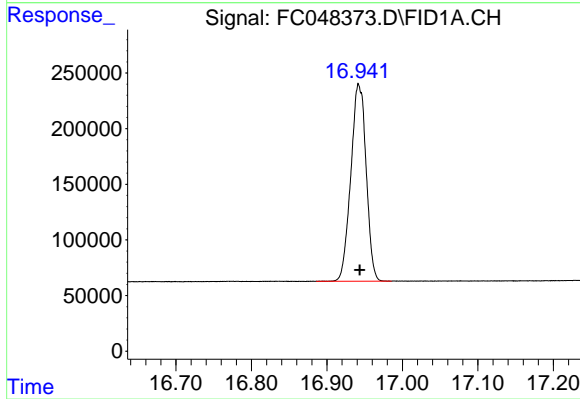
#14 n-Tetracosane (C24)

R.T.: 14.971 min
Delta R.T.: -0.001 min
Response: 2630480
Conc: 20.07 ug/ml



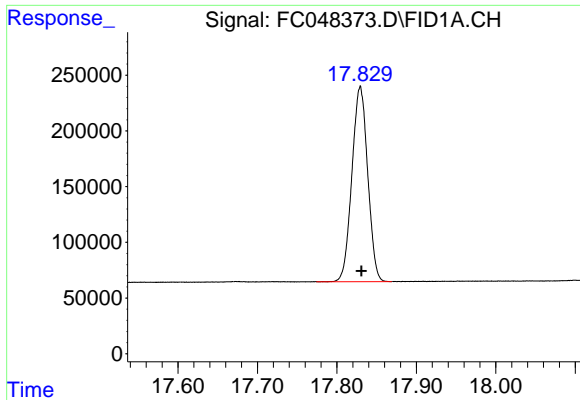
#15 n-Hexacosane (C26)

R.T.: 15.993 min
Delta R.T.: 0.000 min
Response: 2551878
Conc: 19.62 ug/ml



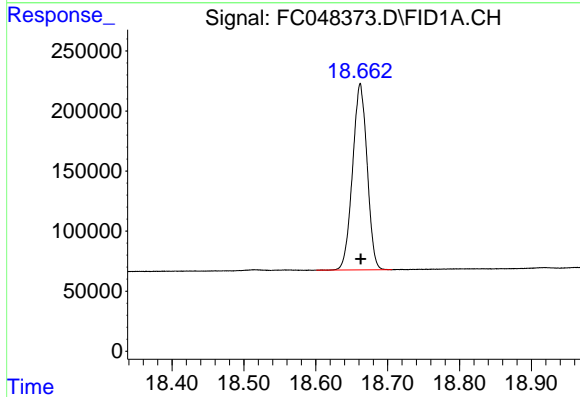
#16 n-Octacosane (C28)

R.T.: 16.942 min
Delta R.T.: -0.001 min
Response: 2497049
Conc: 19.11 ug/ml



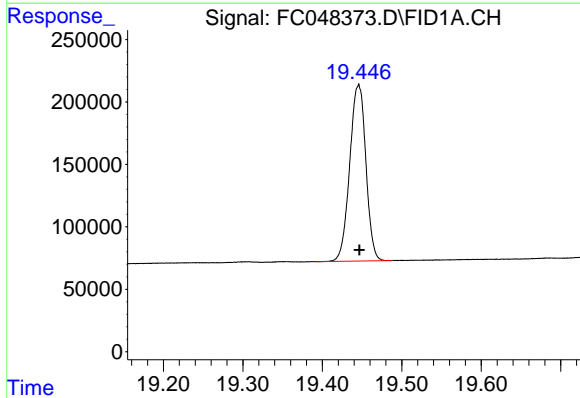
#17 n-Tricontane (C30)

R.T.: 17.829 min
Delta R.T.: -0.002 min
Response: 2416938
Conc: 18.80 ug/ml



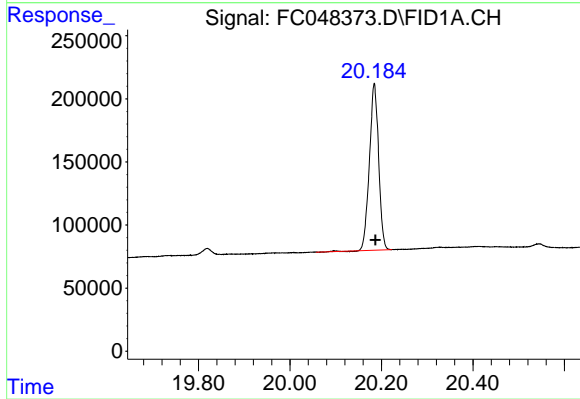
#18 n-Dotriacontane (C32)

R.T.: 18.662 min
Delta R.T.: 0.000 min
Response: 2179324
Conc: 18.45 ug/ml



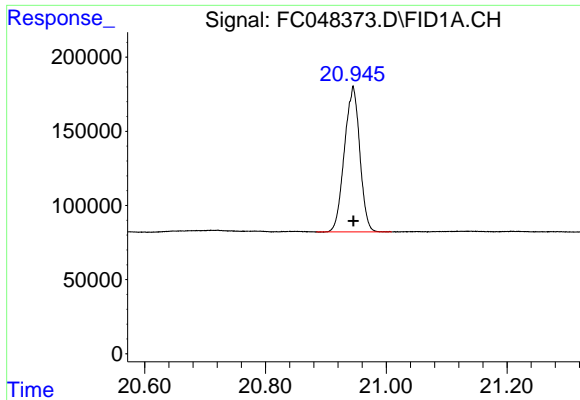
#19 n-Tetratriacontane (C34)

R.T.: 19.446 min
Delta R.T.: -0.001 min
Response: 1991180
Conc: 17.84 ug/ml



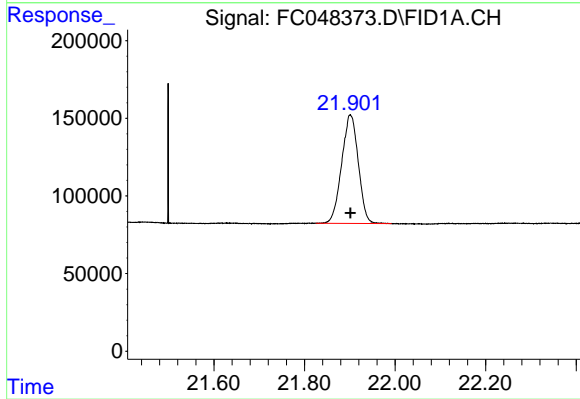
#20 n-Hexatriacontane (C36)

R.T.: 20.184 min
Delta R.T.: -0.003 min
Response: 1840075
Conc: 17.50 ug/ml



#21 n-Octatriacontane (C38)

R.T.: 20.945 min
Delta R.T.: 0.000 min
Response: 1729809
Conc: 17.62 ug/ml



#22 n-Tetracontane (C40)

R.T.: 21.901 min
Delta R.T.: 0.000 min
Response: 1783247
Conc: 18.35 ug/ml