

Data Path : Z:\pestpcbsrv\HPCHEM1\FID_C\Data\FC071122AL\
 Data File : FC060662.D
 Signal(s) : FID1A.ch
 Acq On : 11 Jul 2022 14:30
 Operator : YP/AJ
 Sample : N3631-03DL 25X
 Misc :
 ALS Vial : 7 Sample Multiplier: 1

Integration File: autoint1.e
 Quant Time: Jul 12 03:00:21 2022
 Quant Method : Z:\pestpcbsrv\HPCHEM1\FID_C\Method\Aliphatic EPH 062422.M
 Quant Title : GC Extractables
 QLast Update : Sat Jun 25 04:15:44 2022
 Response via : Initial Calibration
 Integrator: ChemStation

Volume Inj. : 1 ul
 Signal Phase : Rxi-1ms
 Signal Info : 20M x 0.18mm x 0.18um

Compound	R.T.	Response	Conc Units

System Monitoring Compounds			
9) S ortho-Terphenyl (SURR)	10.635	270498	1.476 ug/mlm
Spiked Amount	50.000	Recovery =	2.95%
12) S 1-chlorooctadecane (S...	12.000	190857	1.295 ug/ml
Spiked Amount	50.000	Recovery =	2.59%

Target Compounds

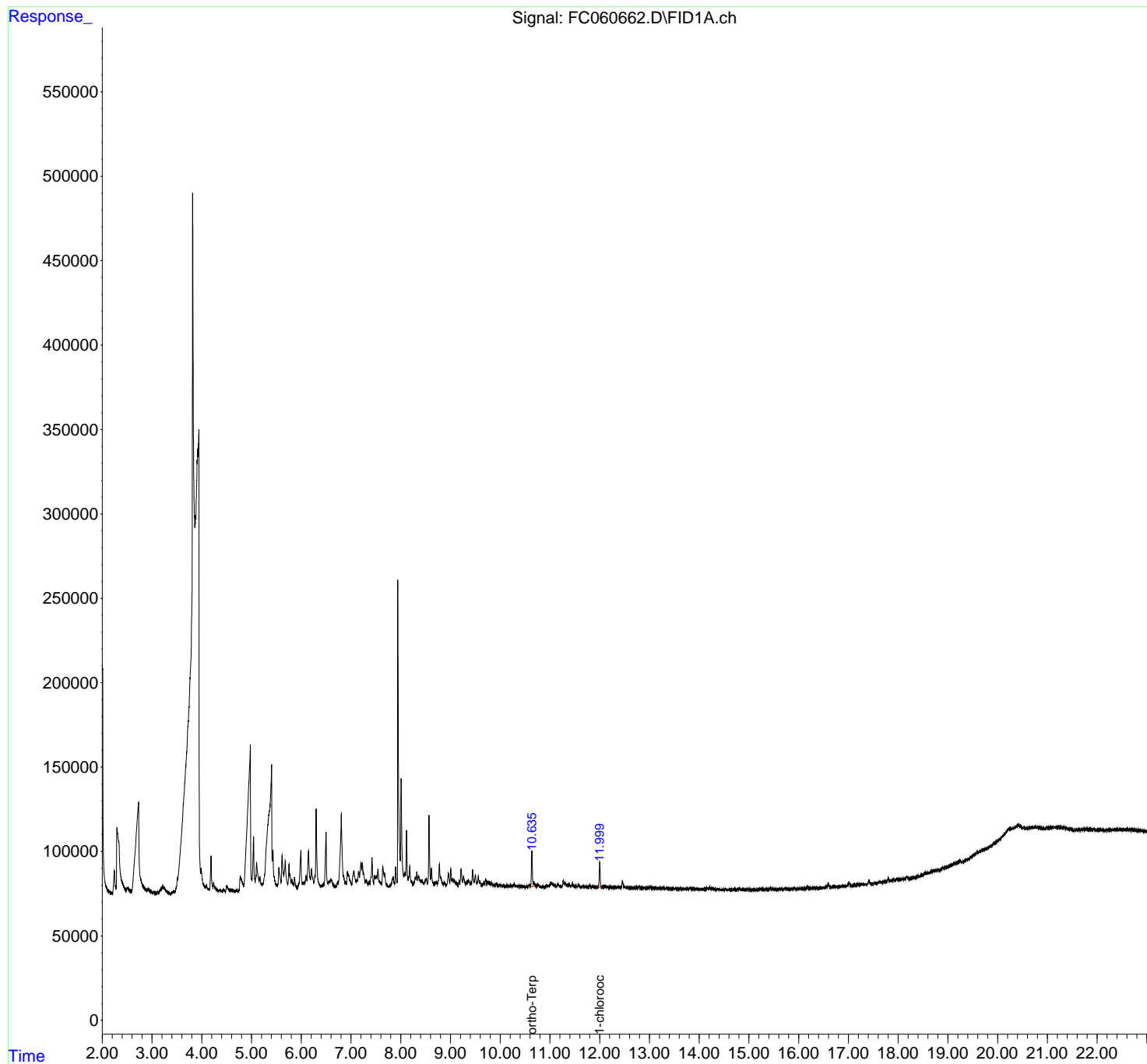
(f)=RT Delta > 1/2 Window

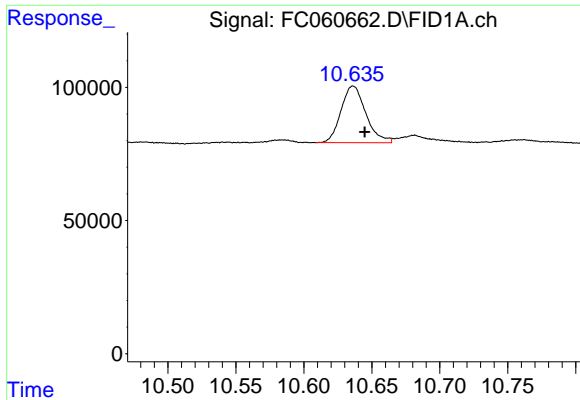
(m)=manual int.

Data Path : Z:\pestpcbsrv\HPCHEM1\FID_C\Data\FC071122AL\
Data File : FC060662.D
Signal(s) : FID1A.ch
Acq On : 11 Jul 2022 14:30
Operator : YP/AJ
Sample : N3631-03DL 25X
Misc :
ALS Vial : 7 Sample Multiplier: 1

Integration File: autoint1.e
Quant Time: Jul 12 03:00:21 2022
Quant Method : Z:\pestpcbsrv\HPCHEM1\FID_C\Method\Aliphatic EPH 062422.M
Quant Title : GC Extractables
QLast Update : Sat Jun 25 04:15:44 2022
Response via : Initial Calibration
Integrator: ChemStation

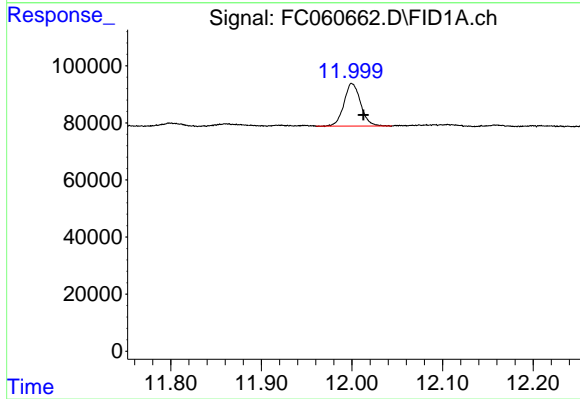
Volume Inj. : 1 ul
Signal Phase : Rxi-1ms
Signal Info : 20M x 0.18mm x 0.18um





#9 ortho-Terphenyl (SURR)

R.T.: 10.635 min
Delta R.T.: -0.009 min
Response: 270498
Conc: 1.48 ug/ml m



#12 1-chlorooctadecane (SURR)

R.T.: 12.000 min
Delta R.T.: -0.012 min
Response: 190857
Conc: 1.29 ug/ml