

Data Path : Z:\pestpcbsrv\HPCHEM1\FID_C\Data\FC071122AL\
 Data File : FC060669.D
 Signal(s) : FID1A.ch
 Acq On : 11 Jul 2022 20:01
 Operator : YP/AJ
 Sample : N3641-02
 Misc :
 ALS Vial : 8 Sample Multiplier: 1

Integration File: autoint1.e
 Quant Time: Jul 12 03:01:32 2022
 Quant Method : Z:\pestpcbsrv\HPCHEM1\FID_C\Method\Aliphatic EPH 062422.M
 Quant Title : GC Extractables
 QLast Update : Sat Jun 25 04:15:44 2022
 Response via : Initial Calibration
 Integrator: ChemStation

Volume Inj. : 1 ul
 Signal Phase : Rxi-1ms
 Signal Info : 20M x 0.18mm x 0.18um

Compound	R.T.	Response	Conc Units

System Monitoring Compounds			
9) S ortho-Terphenyl (SURR)	10.642	10254254	55.956 ug/mlm
Spiked Amount	50.000	Recovery	= 111.91%
12) S 1-chlorooctadecane (S...	12.009	8350648	56.655 ug/ml
Spiked Amount	50.000	Recovery	= 113.31%

Target Compounds

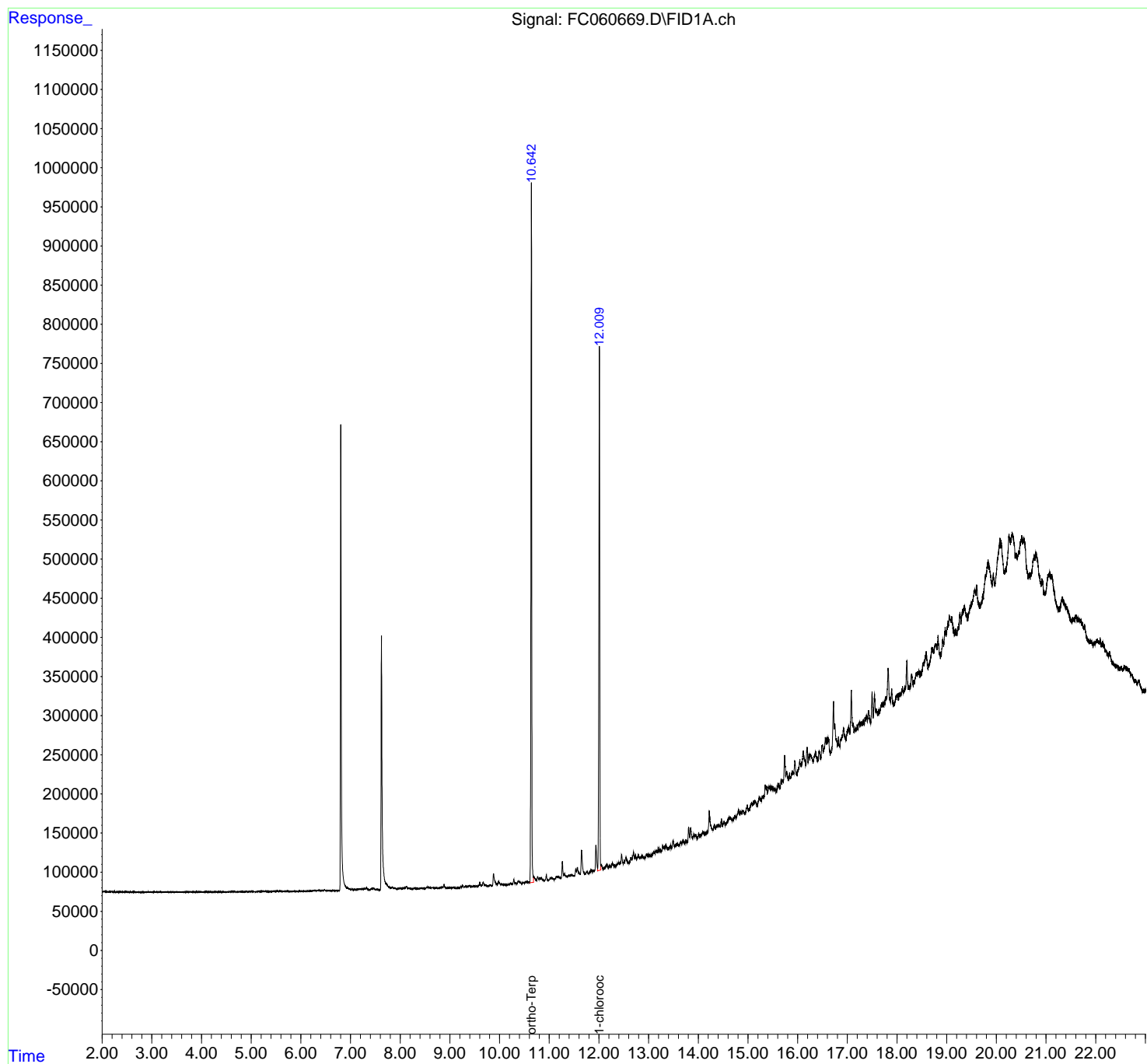
(f)=RT Delta > 1/2 Window

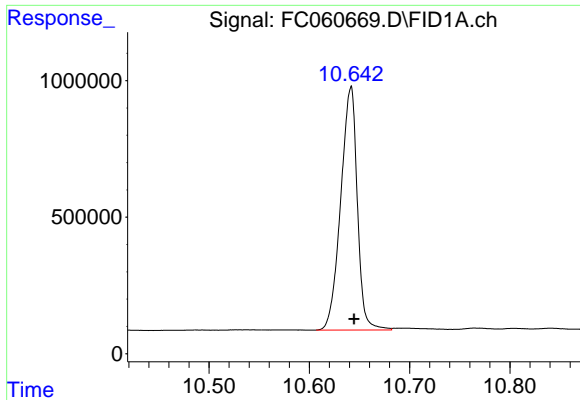
(m)=manual int.

Data Path : Z:\pestpcbsrv\HPCHEM1\FID_C\Data\FC071122AL\
 Data File : FC060669.D
 Signal(s) : FID1A.ch
 Acq On : 11 Jul 2022 20:01
 Operator : YP/AJ
 Sample : N3641-02
 Misc :
 ALS Vial : 8 Sample Multiplier: 1

Integration File: autoint1.e
 Quant Time: Jul 12 03:01:32 2022
 Quant Method : Z:\pestpcbsrv\HPCHEM1\FID_C\Method\Aliphatic EPH 062422.M
 Quant Title : GC Extractables
 QLast Update : Sat Jun 25 04:15:44 2022
 Response via : Initial Calibration
 Integrator: ChemStation

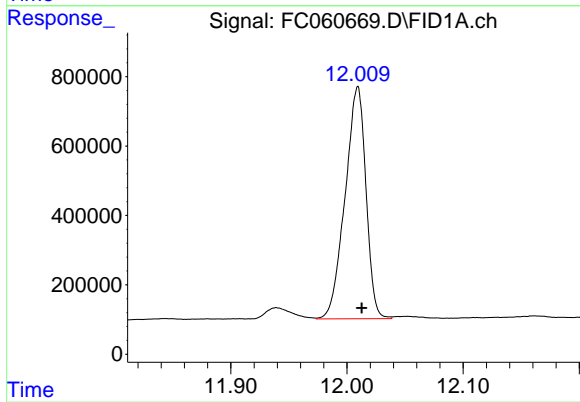
Volume Inj. : 1 ul
 Signal Phase : Rxi-1ms
 Signal Info : 20M x 0.18mm x 0.18um





#9 ortho-Terphenyl (SURR)

R.T.: 10.642 min
Delta R.T.: -0.003 min
Response: 10254254
Conc: 55.96 ug/ml m



#12 1-chlorooctadecane (SURR)

R.T.: 12.009 min
Delta R.T.: -0.004 min
Response: 8350648
Conc: 56.65 ug/ml