

Data Path : Z:\pestpcbsrv\HPCHEM1\FID_C\Data\FC071122AL\
 Data File : FC060683.D
 Signal(s) : FID1A.ch
 Acq On : 12 Jul 2022 05:59
 Operator : YP/AJ
 Sample : I.BLK
 Misc :
 ALS Vial : 1 Sample Multiplier: 1

Integration File: autoint1.e
 Quant Time: Jul 12 06:50:22 2022
 Quant Method : Z:\pestpcbsrv\HPCHEM1\FID_C\Method\Aliphatic EPH 062422.M
 Quant Title : GC Extractables
 QLast Update : Sat Jun 25 04:15:44 2022
 Response via : Initial Calibration
 Integrator: ChemStation

Volume Inj. : 1 ul
 Signal Phase : Rxi-1ms
 Signal Info : 20M x 0.18mm x 0.18um

Compound	R.T.	Response	Conc Units

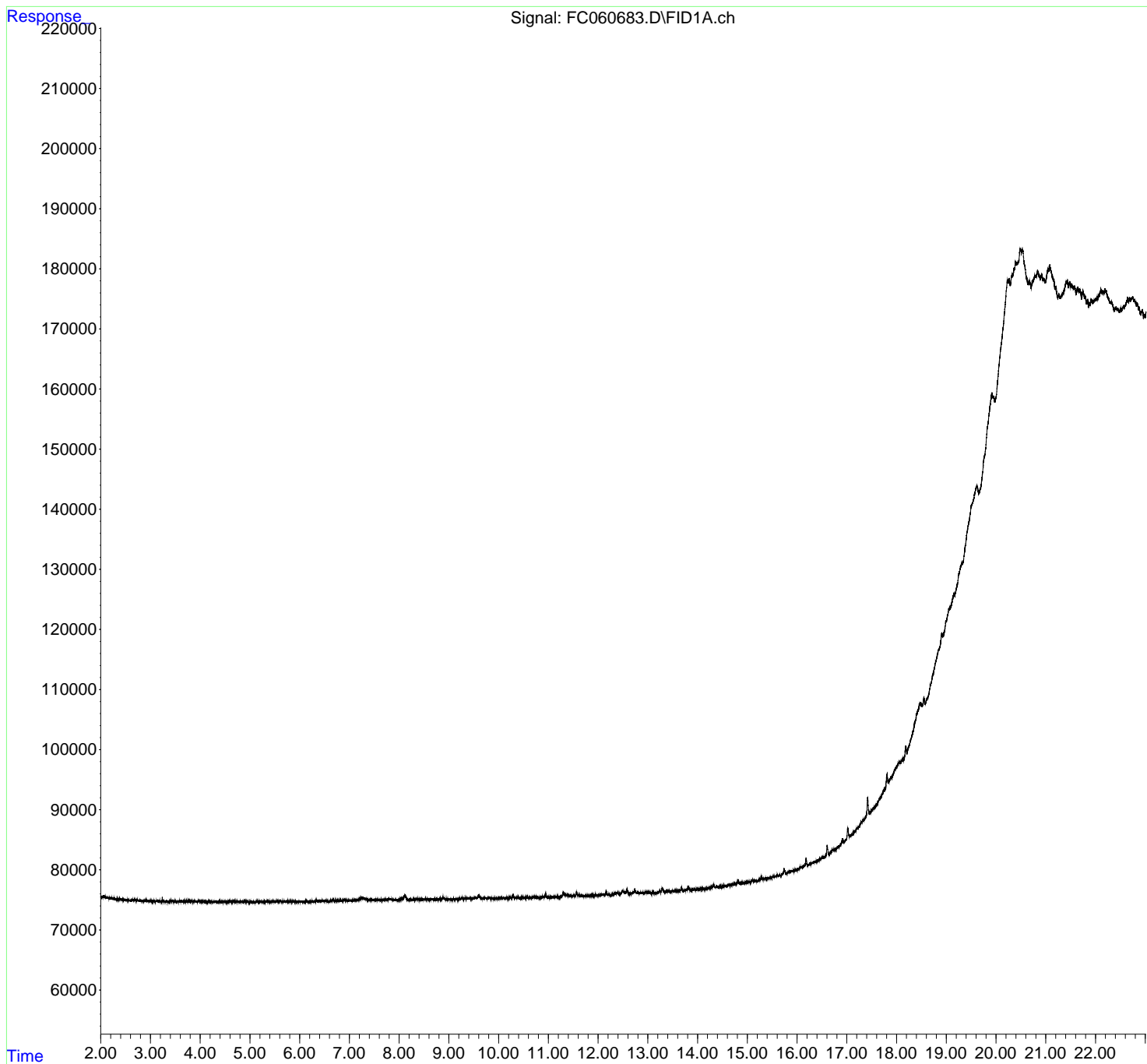
System Monitoring Compounds			
Target Compounds			

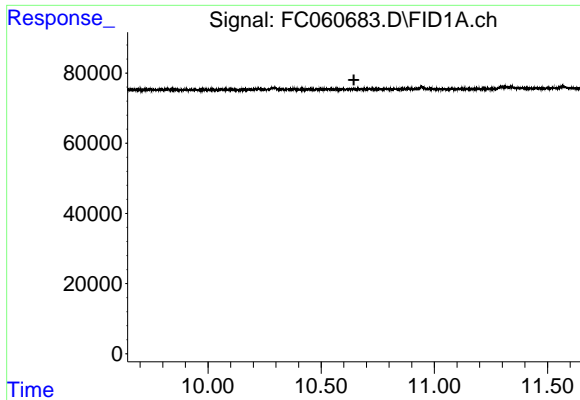
(f)=RT Delta > 1/2 Window (m)=manual int.

Data Path : Z:\pestpcbsrv\HPCHEM1\FID_C\Data\FC071122AL\
 Data File : FC060683.D
 Signal(s) : FID1A.ch
 Acq On : 12 Jul 2022 05:59
 Operator : YP/AJ
 Sample : I.BLK
 Misc :
 ALS Vial : 1 Sample Multiplier: 1

Integration File: autoint1.e
 Quant Time: Jul 12 06:50:22 2022
 Quant Method : Z:\pestpcbsrv\HPCHEM1\FID_C\Method\Aliphatic EPH 062422.M
 Quant Title : GC Extractables
 QLast Update : Sat Jun 25 04:15:44 2022
 Response via : Initial Calibration
 Integrator: ChemStation

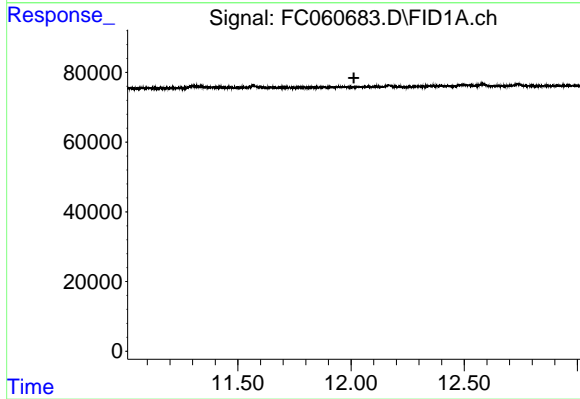
Volume Inj. : 1 ul
 Signal Phase : Rxi-1ms
 Signal Info : 20M x 0.18mm x 0.18um





#9 ortho-Terphenyl (SURR)

R.T.: 0.000 min
Exp R.T. : 10.645 min
Response: 0
Conc: N.D.



#12 1-chlorooctadecane (SURR)

R.T.: 0.000 min
Exp R.T. : 12.013 min
Response: 0
Conc: N.D.