

Data Path : Z:\pestpcbsrv\HPCHEM1\FID_C\Data\FC071219AL\
 Data File : FC042354.D
 Signal(s) : FID1A.CH
 Acq On : 12 Jul 2019 21:50
 Operator : DD\AJ
 Sample : K3761-01
 Misc :
 ALS Vial : 17 Sample Multiplier: 1

Integration File: autoint1.e
 Quant Time: Jul 13 01:25:54 2019
 Quant Method : Z:\pestpcbsrv\HPCHEM1\FID_C\Method\Alaphatic EPH 070919.M
 Quant Title : GC Extractables
 QLast Update : Wed Jul 10 08:56:11 2019
 Response via : Initial Calibration
 Integrator: ChemStation 6890 Scale Mode: Large solvent peaks clipped

Volume Inj. : 1 ul
 Signal Phase : Rxi-1ms
 Signal Info : 20M x 0.18mm x 0.18um

Compound	R.T.	Response	Conc Units

System Monitoring Compounds			
12) S 1-chlorooctadecane (S...	13.124	5009364	45.694 ug/ml
Spiked Amount	50.000	Recovery	= 91.39%
Target Compounds			
6) T n-Tetradecane (C14)	8.345	512560	4.308 ug/ml

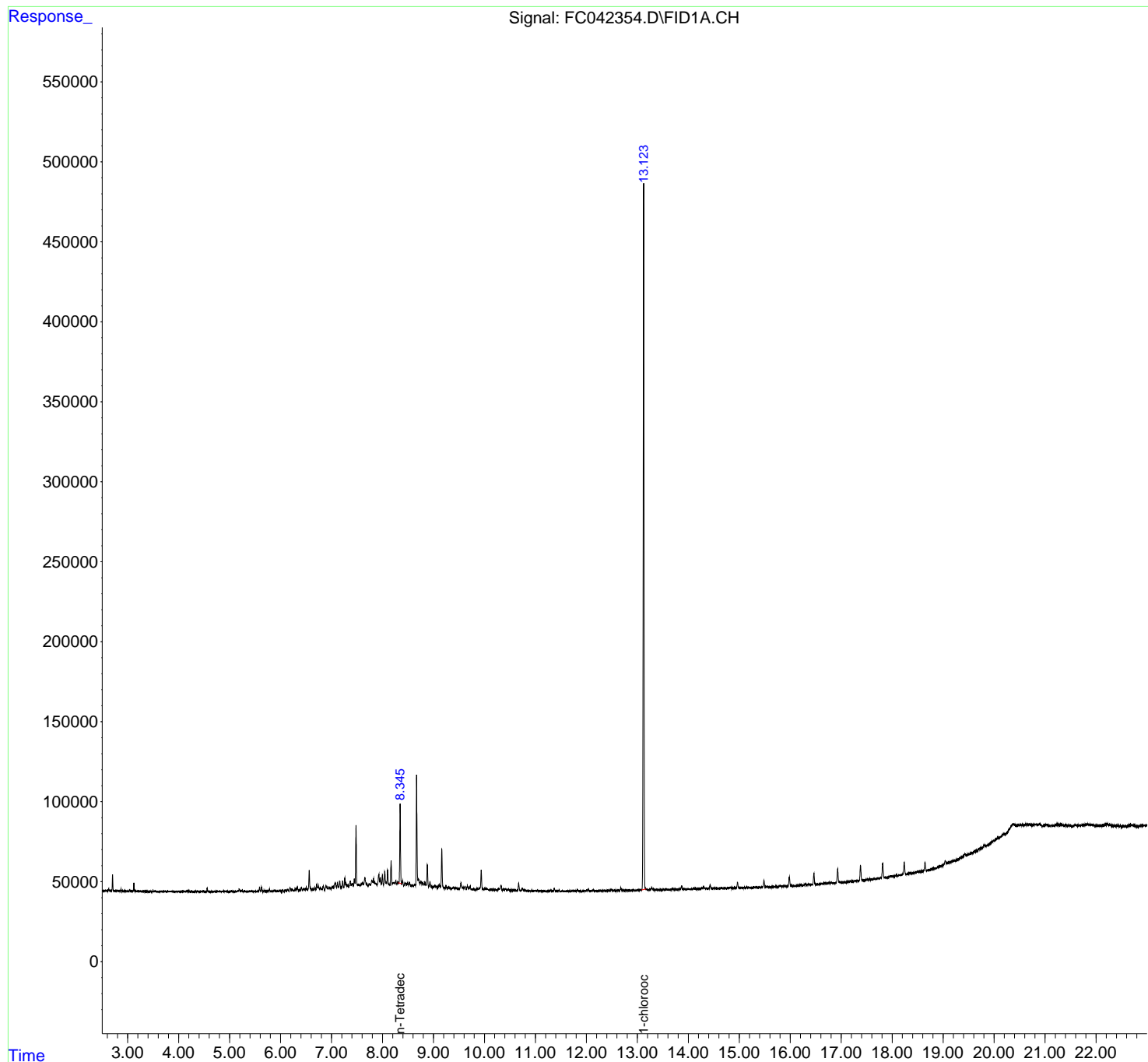
(f)=RT Delta > 1/2 Window

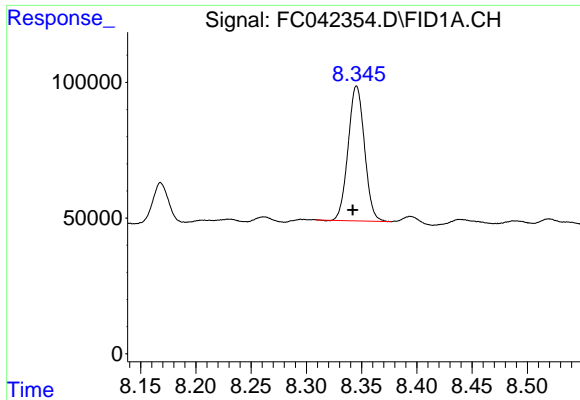
(m)=manual int.

Data Path : Z:\pestpcbsrv\HPCHEM1\FID_C\Data\FC071219AL\
Data File : FC042354.D
Signal(s) : FID1A.CH
Acq On : 12 Jul 2019 21:50
Operator : DD\AJ
Sample : K3761-01
Misc :
ALS Vial : 17 Sample Multiplier: 1

Integration File: autoint1.e
Quant Time: Jul 13 01:25:54 2019
Quant Method : Z:\pestpcbsrv\HPCHEM1\FID_C\Method\Alaphatic EPH 070919.M
Quant Title : GC Extractables
QLast Update : Wed Jul 10 08:56:11 2019
Response via : Initial Calibration
Integrator: ChemStation 6890 Scale Mode: Large solvent peaks clipped

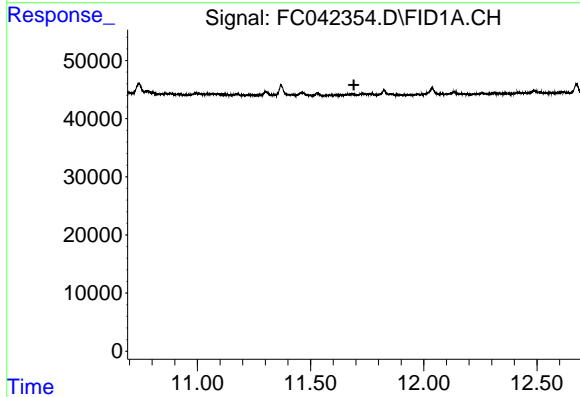
Volume Inj. : 1 ul
Signal Phase : Rxi-1ms
Signal Info : 20M x 0.18mm x 0.18um





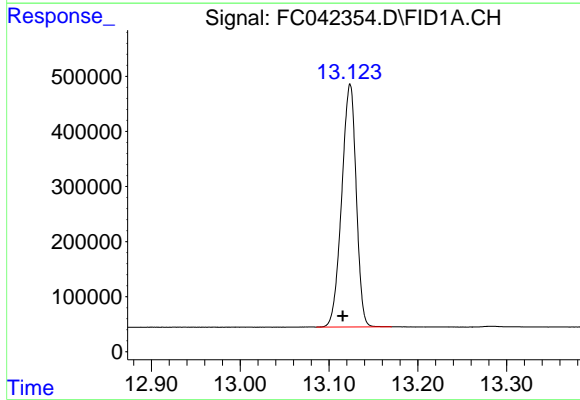
#6 n-Tetradecane (C14)

R.T.: 8.345 min
Delta R.T.: 0.003 min
Response: 512560
Conc: 4.31 ug/ml



#9 ortho-Terphenyl (SURR)

R.T.: 0.000 min
Exp R.T. : 11.691 min
Response: 0
Conc: N.D.



#12 1-chlorooctadecane (SURR)

R.T.: 13.124 min
Delta R.T.: 0.008 min
Response: 5009364
Conc: 45.69 ug/ml