

Data Path : Z:\pestpcbsrv\HPCHEM1\FID\_C\Data\FC071318AL\  
 Data File : FC035361.D  
 Signal(s) : FID1A.CH  
 Acq On : 14 Jul 2018 13:24  
 Operator : AJ\SJ  
 Sample : J3821-01  
 Misc :  
 ALS Vial : 30 Sample Multiplier: 1

Integration File: autoint1.e  
 Quant Time: Jul 16 03:22:52 2018  
 Quant Method : Z:\PESTPCBSRV\HPCHEM1\FID\_C\Method\Alaphatic EPH 062518.M  
 Quant Title : GC Extractables  
 QLast Update : Mon Jun 25 14:27:40 2018  
 Response via : Initial Calibration  
 Integrator: ChemStation 6890 Scale Mode: Large solvent peaks clipped

Volume Inj. : 1 ul  
 Signal Phase : Rxi-1ms  
 Signal Info : 20M x 0.18mm x 0.18um

Compound	R.T.	Response	Conc Units
-----			
System Monitoring Compounds			
9) S ortho-Terphenyl (SURR)	11.441	4067591	39.506 ug/mlm
Spiked Amount	50.000	Recovery	= 79.01%
12) S 1-chlorooctadecane (S...	12.873	10671760	133.326 ug/ml
Spiked Amount	50.000	Recovery	= 266.65%

Target Compounds

-----

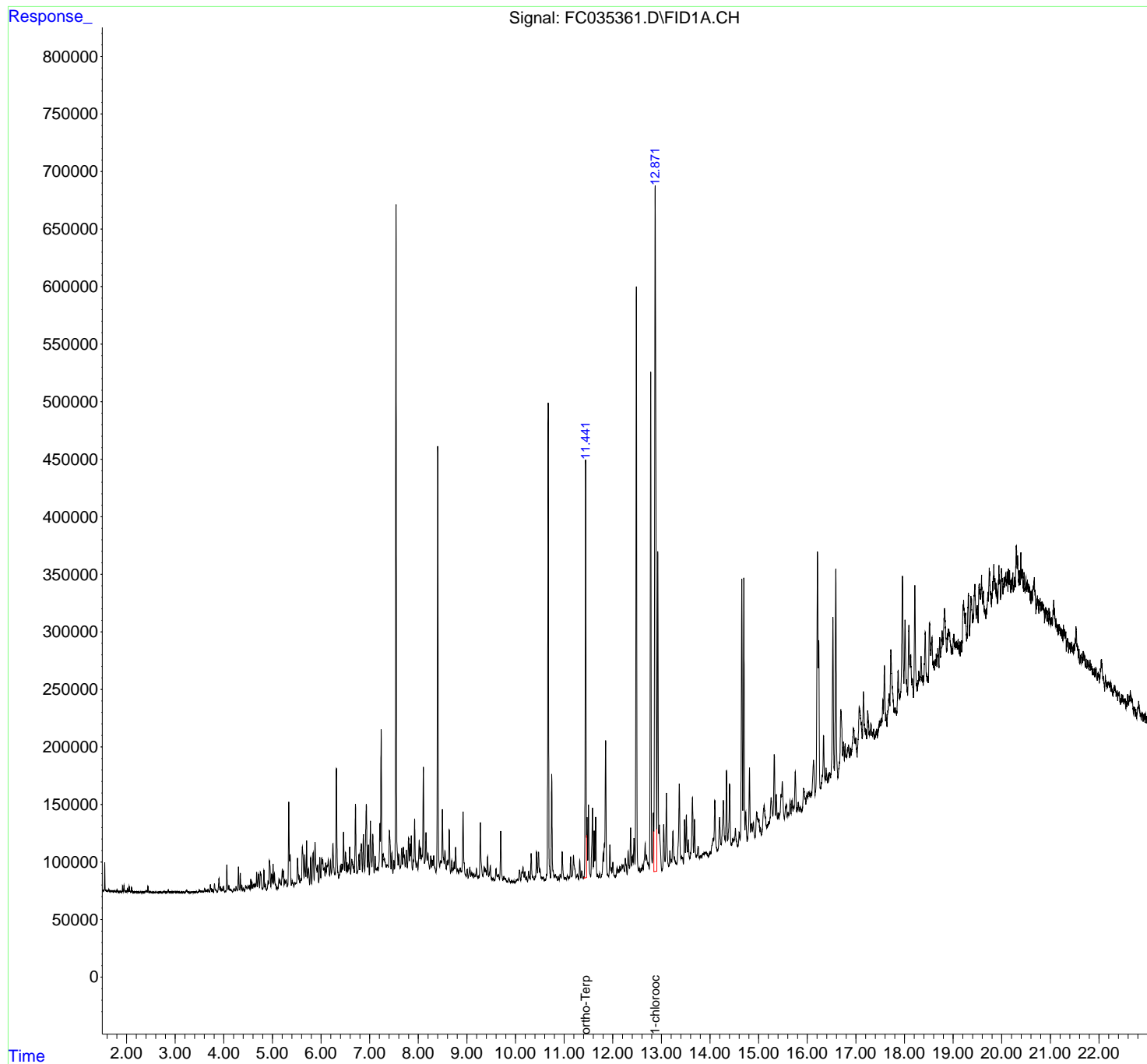
(f)=RT Delta > 1/2 Window

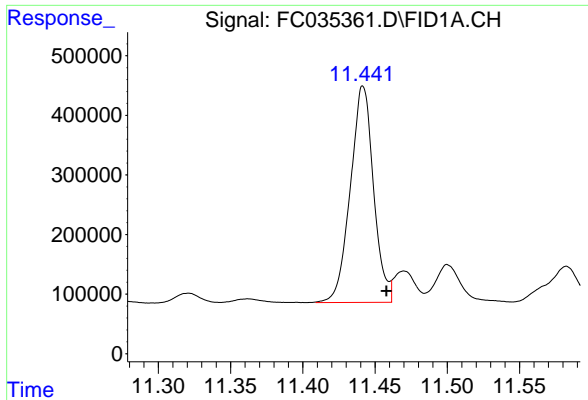
(m)=manual int.

Data Path : Z:\pestpcbsrv\HPCHEM1\FID\_C\Data\FC071318AL\  
Data File : FC035361.D  
Signal(s) : FID1A.CH  
Acq On : 14 Jul 2018 13:24  
Operator : AJ\SJ  
Sample : J3821-01  
Misc :  
ALS Vial : 30 Sample Multiplier: 1

Integration File: autoint1.e  
Quant Time: Jul 16 03:22:52 2018  
Quant Method : Z:\PESTPCBSRV\HPCHEM1\FID\_C\Method\Aliphatic EPH 062518.M  
Quant Title : GC Extractables  
QLast Update : Mon Jun 25 14:27:40 2018  
Response via : Initial Calibration  
Integrator: ChemStation 6890 Scale Mode: Large solvent peaks clipped

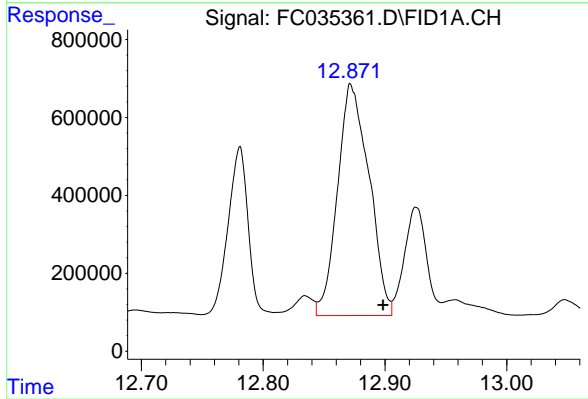
Volume Inj. : 1 ul  
Signal Phase : Rxi-1ms  
Signal Info : 20M x 0.18mm x 0.18um





#9 ortho-Terphenyl (SURR)

R.T.: 11.441 min  
Delta R.T.: -0.017 min  
Response: 4067591  
Conc: 39.51 ug/ml m



#12 1-chlorooctadecane (SURR)

R.T.: 12.873 min  
Delta R.T.: -0.026 min  
Response: 10671760  
Conc: 133.33 ug/ml