

Data Path : Z:\pestpcbsrv\HPCHEM1\FID\_C\Data\FC071321AL\  
 Data File : FC054684.D  
 Signal(s) : FID1A.CH  
 Acq On : 14 Jul 2021 4:46  
 Operator : DD\AJ  
 Sample : 20 PPM ALIPHATIC HC STD  
 Misc :  
 ALS Vial : 2 Sample Multiplier: 1

Integration File: autoint1.e  
 Quant Time: Jul 14 05:18:36 2021  
 Quant Method : Z:\pestpcbsrv\HPCHEM1\FID\_C\Method\Alaphatic EPH 062521.M  
 Quant Title : GC Extractables  
 QLast Update : Sat Jun 26 02:10:35 2021  
 Response via : Initial Calibration  
 Integrator: ChemStation 6890 Scale Mode: Large solvent peaks clipped

Volume Inj. : 1 ul  
 Signal Phase : Rxi-1ms  
 Signal Info : 20M x 0.18mm x 0.18um

Compound	R.T.	Response	Conc Units
-----			
System Monitoring Compounds			
9) S ortho-Terphenyl (SURR)	11.322	3055953	21.586 ug/ml
Spiked Amount	50.000	Recovery	= 43.17%
12) S 1-chlorooctadecane (S...	12.765	2399263	21.523 ug/ml
Spiked Amount	50.000	Recovery	= 43.05%
Target Compounds			
1) T n-Nonane (C9)	3.136	2668050	22.688 ug/ml
2) T n-Decane (C10)	4.191	2723186	22.934 ug/ml
3) T A~Naphthalene (C11.7)	5.757	2959964	22.514 ug/ml
4) T n-Dodecane (C12)	6.197	2770809	23.118 ug/ml
5) T A~2-methylnaphthalene...	6.809	2982737	22.593 ug/ml
6) T n-Tetradecane (C14)	7.985	2825222	23.188 ug/ml
7) T n-Hexadecane (C16)	9.580	2837711	22.782 ug/ml
8) T n-Octadecane (C18)	11.018	2892368	22.394 ug/ml
10) T n-Eicosane (C20)	12.324	2850467	21.906 ug/ml
11) T n-Heneicosane (C21)	12.934	2853166	21.490 ug/ml
13) T n-Docosane (C22)	13.519	2816804	21.262 ug/ml
14) T n-Tetracosane (C24)	14.619	2801869	20.698 ug/ml
15) T n-Hexacosane (C26)	15.638	2694218	19.883 ug/ml
16) T n-Octacosane (C28)	16.586	2648180	19.294 ug/ml
17) T n-Tricontane (C30)	17.471	2583742	18.655 ug/ml
18) T n-Dotriacontane (C32)	18.304	2493406	18.225 ug/ml
19) T n-Tetratriacontane (C34)	19.086	2474066	18.311 ug/ml
20) T n-Hexatriacontane (C36)	19.825	2394849	19.401 ug/ml
21) T n-Octatriacontane (C38)	20.529	2374302	20.990 ug/ml
22) T n-Tetracontane (C40)	21.346	2357690	20.859 ug/ml
-----			

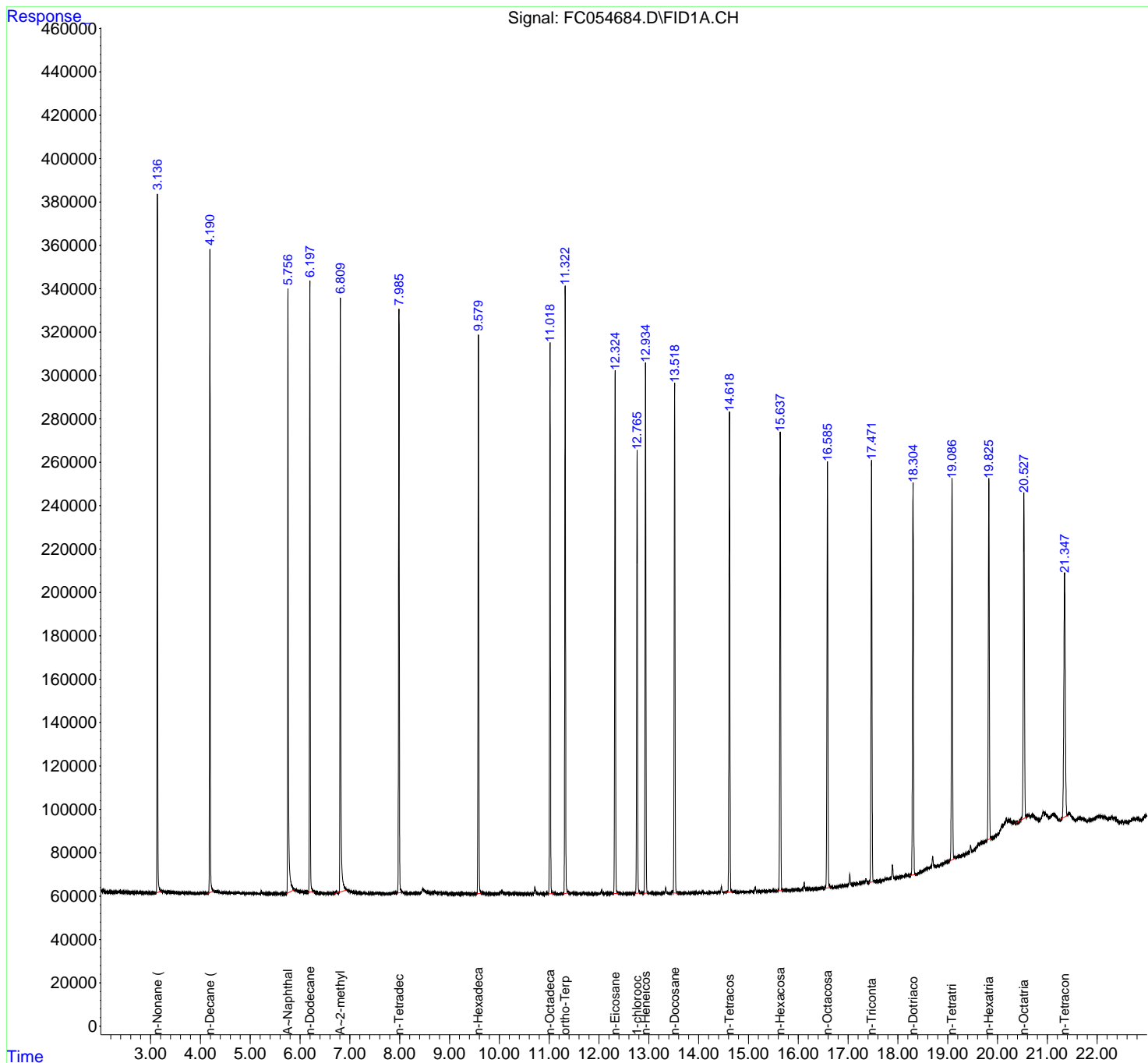
(f)=RT Delta > 1/2 Window

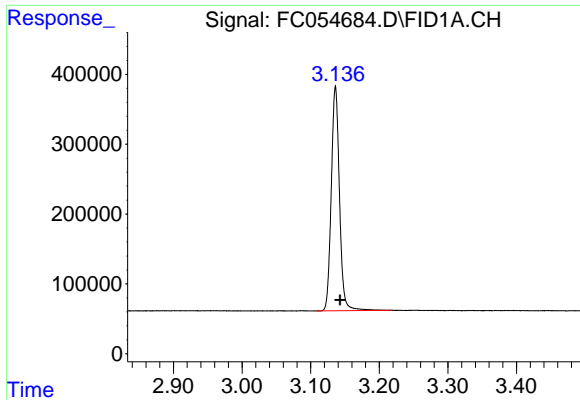
(m)=manual int.

Data Path : Z:\pestpcbsrv\HPCHEM1\FID\_C\Data\FC071321AL\  
 Data File : FC054684.D  
 Signal(s) : FID1A.CH  
 Acq On : 14 Jul 2021 4:46  
 Operator : DD\AJ  
 Sample : 20 PPM ALIPHATIC HC STD  
 Misc :  
 ALS Vial : 2 Sample Multiplier: 1

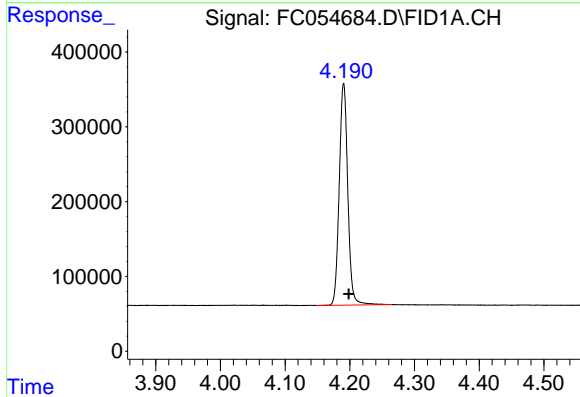
Integration File: autoint1.e  
 Quant Time: Jul 14 05:18:36 2021  
 Quant Method : Z:\pestpcbsrv\HPCHEM1\FID\_C\Method\Aliphatic EPH 062521.M  
 Quant Title : GC Extractables  
 QLast Update : Sat Jun 26 02:10:35 2021  
 Response via : Initial Calibration  
 Integrator: ChemStation 6890 Scale Mode: Large solvent peaks clipped

Volume Inj. : 1 ul  
 Signal Phase : Rxi-1ms  
 Signal Info : 20M x 0.18mm x 0.18um

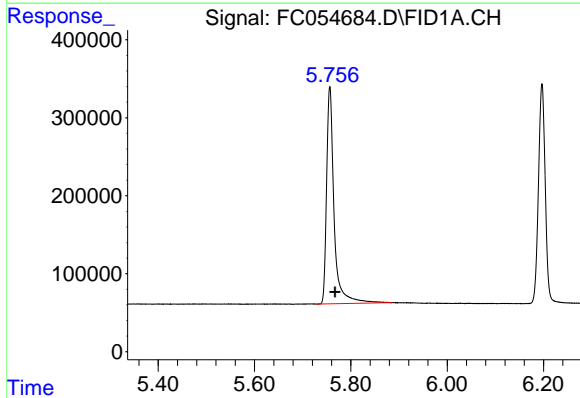




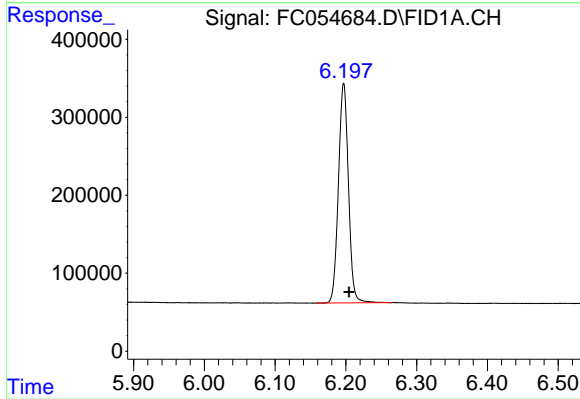
#1 n-Nonane (C9)  
R.T.: 3.136 min  
Delta R.T.: -0.007 min  
Response: 2668050  
Conc: 22.69 ug/ml



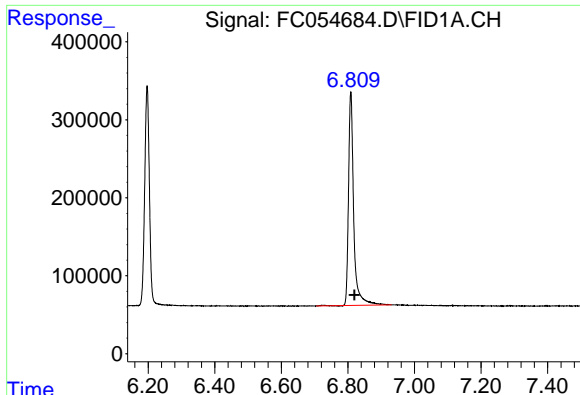
#2 n-Decane (C10)  
R.T.: 4.191 min  
Delta R.T.: -0.008 min  
Response: 2723186  
Conc: 22.93 ug/ml



#3 A~Naphthalene (C11.7)  
R.T.: 5.757 min  
Delta R.T.: -0.011 min  
Response: 2959964  
Conc: 22.51 ug/ml

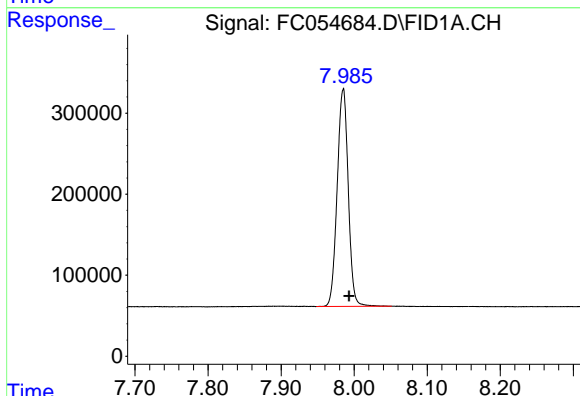


#4 n-Dodecane (C12)  
R.T.: 6.197 min  
Delta R.T.: -0.008 min  
Response: 2770809  
Conc: 23.12 ug/ml



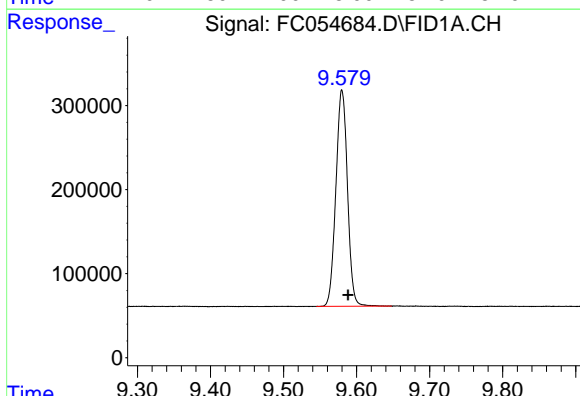
#5 A~2-methylnaphthalene (C12.89)

R.T.: 6.809 min  
 Delta R.T.: -0.011 min  
 Response: 2982737  
 Conc: 22.59 ug/ml



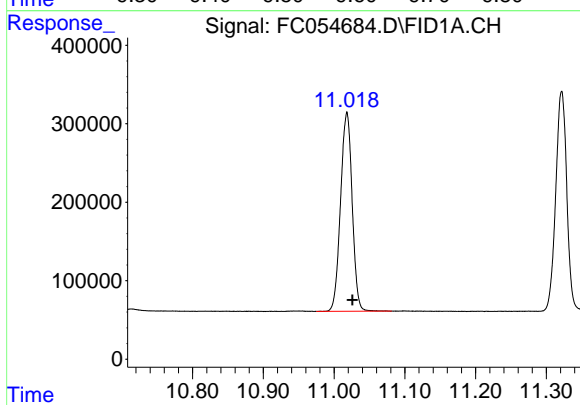
#6 n-Tetradecane (C14)

R.T.: 7.985 min  
 Delta R.T.: -0.008 min  
 Response: 2825222  
 Conc: 23.19 ug/ml



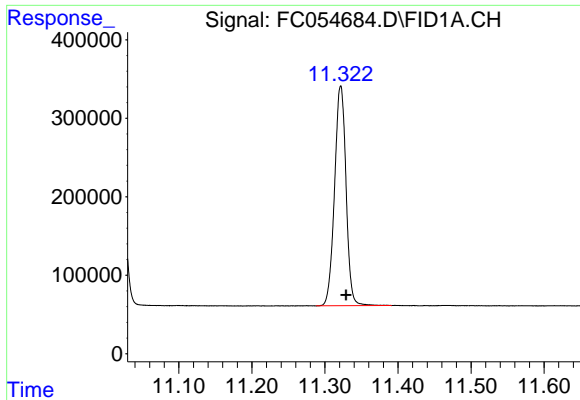
#7 n-Hexadecane (C16)

R.T.: 9.580 min  
 Delta R.T.: -0.008 min  
 Response: 2837711  
 Conc: 22.78 ug/ml



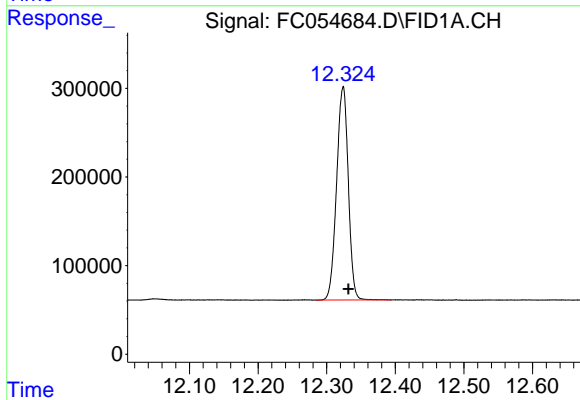
#8 n-Octadecane (C18)

R.T.: 11.018 min  
 Delta R.T.: -0.008 min  
 Response: 2892368  
 Conc: 22.39 ug/ml



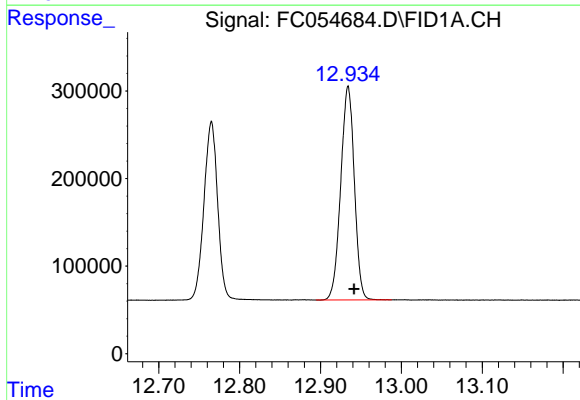
#9 ortho-Terphenyl (SURR)

R.T.: 11.322 min  
Delta R.T.: -0.007 min  
Response: 3055953  
Conc: 21.59 ug/ml



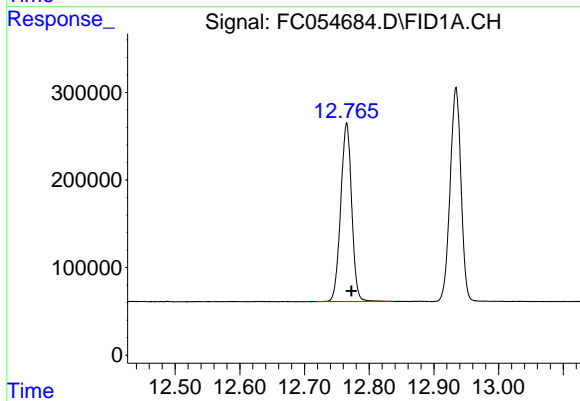
#10 n-Eicosane (C20)

R.T.: 12.324 min  
Delta R.T.: -0.008 min  
Response: 2850467  
Conc: 21.91 ug/ml



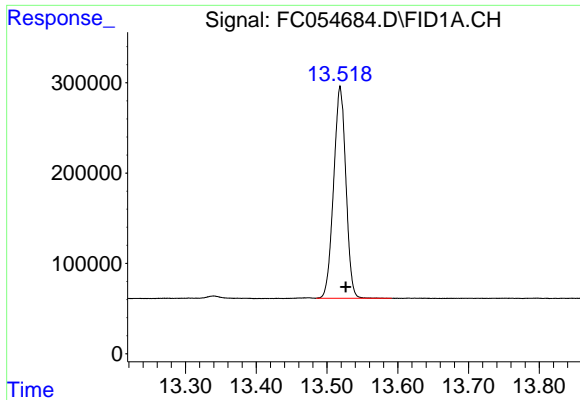
#11 n-Heneicosane (C21)

R.T.: 12.934 min  
Delta R.T.: -0.007 min  
Response: 2853166  
Conc: 21.49 ug/ml



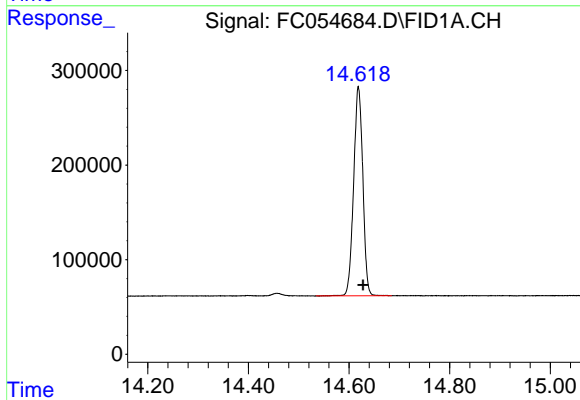
#12 1-chlorooctadecane (SURR)

R.T.: 12.765 min  
Delta R.T.: -0.008 min  
Response: 2399263  
Conc: 21.52 ug/ml



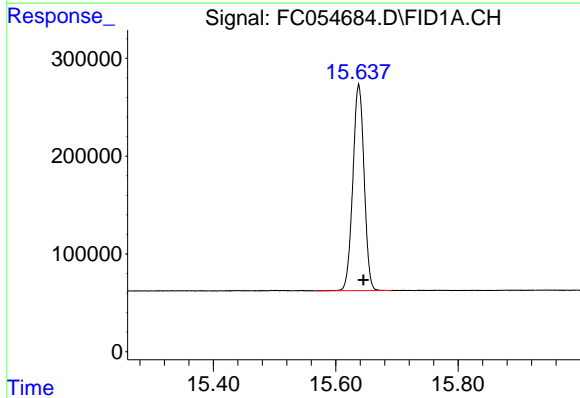
#13 n-Docosane (C22)

R.T.: 13.519 min  
Delta R.T.: -0.008 min  
Response: 2816804  
Conc: 21.26 ug/ml



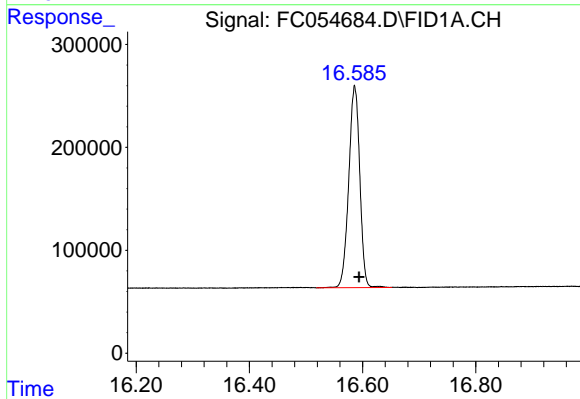
#14 n-Tetracosane (C24)

R.T.: 14.619 min  
Delta R.T.: -0.009 min  
Response: 2801869  
Conc: 20.70 ug/ml



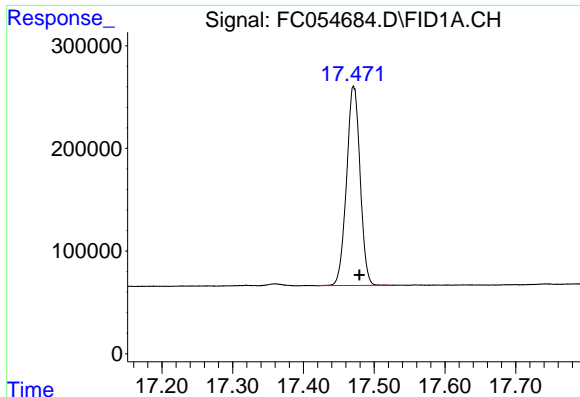
#15 n-Hexacosane (C26)

R.T.: 15.638 min  
Delta R.T.: -0.008 min  
Response: 2694218  
Conc: 19.88 ug/ml



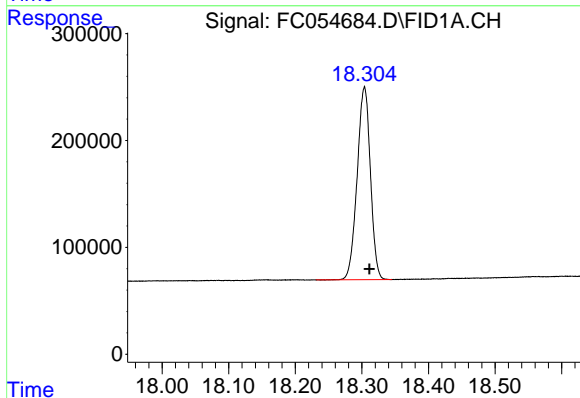
#16 n-Octacosane (C28)

R.T.: 16.586 min  
Delta R.T.: -0.008 min  
Response: 2648180  
Conc: 19.29 ug/ml



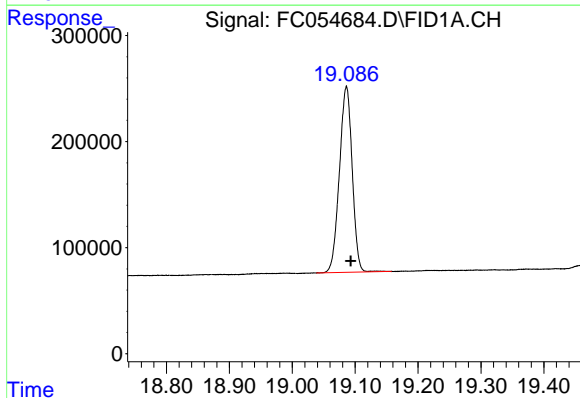
#17 n-Tricontane (C30)

R.T.: 17.471 min  
Delta R.T.: -0.008 min  
Response: 2583742  
Conc: 18.65 ug/ml



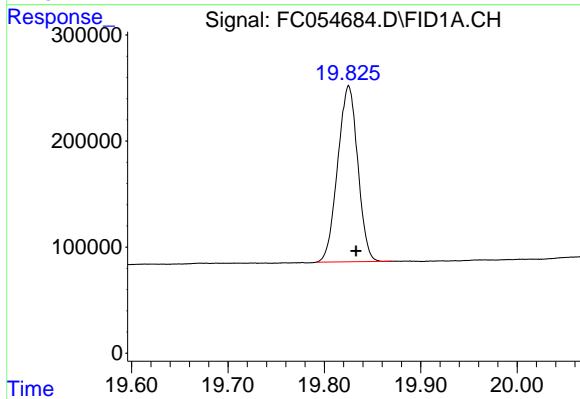
#18 n-Dotriacontane (C32)

R.T.: 18.304 min  
Delta R.T.: -0.008 min  
Response: 2493406  
Conc: 18.23 ug/ml



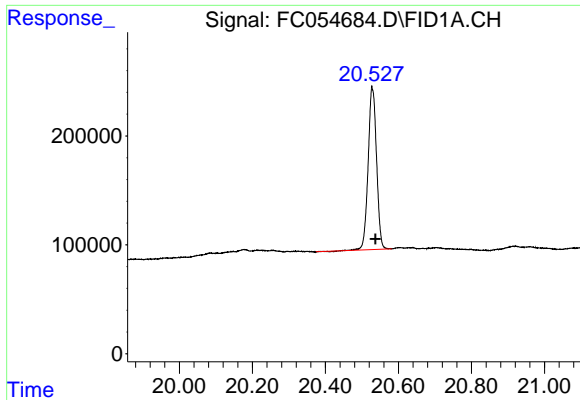
#19 n-Tetratriacontane (C34)

R.T.: 19.086 min  
Delta R.T.: -0.007 min  
Response: 2474066  
Conc: 18.31 ug/ml



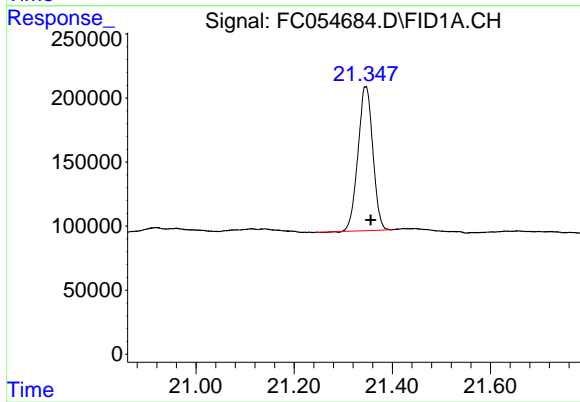
#20 n-Hexatriacontane (C36)

R.T.: 19.825 min  
Delta R.T.: -0.008 min  
Response: 2394849  
Conc: 19.40 ug/ml



#21 n-Octatriacontane (C38)

R.T.: 20.529 min  
Delta R.T.: -0.008 min  
Response: 2374302  
Conc: 20.99 ug/ml



#22 n-Tetracontane (C40)

R.T.: 21.346 min  
Delta R.T.: -0.010 min  
Response: 2357690  
Conc: 20.86 ug/ml