

Data Path : Z:\pestpcbsrv\HPCHEM1\FID_C\Data\FC071519AL\
 Data File : FC042389.D
 Signal(s) : FID1A.CH
 Acq On : 15 Jul 2019 22:39
 Operator : DD\AJ
 Sample : 20 PPM ALIPHATIC HC STD
 Misc :
 ALS Vial : 2 Sample Multiplier: 1

Integration File: autoint1.e
 Quant Time: Jul 16 01:42:08 2019
 Quant Method : Z:\pestpcbsrv\HPCHEM1\FID_C\Method\Alaphatic EPH 070919.M
 Quant Title : GC Extractables
 QLast Update : Wed Jul 10 08:56:11 2019
 Response via : Initial Calibration
 Integrator: ChemStation 6890 Scale Mode: Large solvent peaks clipped

Volume Inj. : 1 ul
 Signal Phase : Rxi-1ms
 Signal Info : 20M x 0.18mm x 0.18um

Compound	R.T.	Response	Conc Units

System Monitoring Compounds			
9) S ortho-Terphenyl (SURR)	11.700	2664355	20.130 ug/ml
Spiked Amount	50.000	Recovery	= 40.26%
12) S 1-chlorooctadecane (S...	13.123	2179225	19.878 ug/ml
Spiked Amount	50.000	Recovery	= 39.76%
Target Compounds			
1) T n-Nonane (C9)	3.496	2437329	20.934 ug/ml
2) T n-Decane (C10)	4.560	2499753	21.187 ug/ml
3) T A~Naphthalene (C11.7)	6.148	2764036	21.292 ug/ml
4) T n-Dodecane (C12)	6.565	2527629	21.302 ug/ml
5) T A~2-methylnaphthalene...	7.198	2780938	21.402 ug/ml
6) T n-Tetradecane (C14)	8.348	2535919	21.314 ug/ml
7) T n-Hexadecane (C16)	9.940	2537911	21.137 ug/ml
8) T n-Octadecane (C18)	11.374	2536033	20.781 ug/ml
10) T n-Eicosane (C20)	12.677	2529961	20.286 ug/ml
11) T n-Heneicosane (C21)	13.288	2502532	19.992 ug/ml
13) T n-Docosane (C22)	13.872	2469644	19.690 ug/ml
14) T n-Tetracosane (C24)	14.970	2400817	18.953 ug/ml
15) T n-Hexacosane (C26)	15.987	2311779	18.283 ug/ml
16) T n-Octacosane (C28)	16.933	2254167	17.863 ug/ml
17) T n-Tricontane (C30)	17.819	2177659	17.763 ug/ml
18) T n-Dotriacontane (C32)	18.647	2023106	18.107 ug/ml
19) T n-Tetratriacontane (C34)	19.429	1696908	18.323 ug/ml
20) T n-Hexatriacontane (C36)	20.168	1633620	20.498 ug/ml
21) T n-Octatriacontane (C38)	20.917	1384467	19.311 ug/ml
22) T n-Tetracontane (C40)	21.855	1584255	22.830 ug/ml

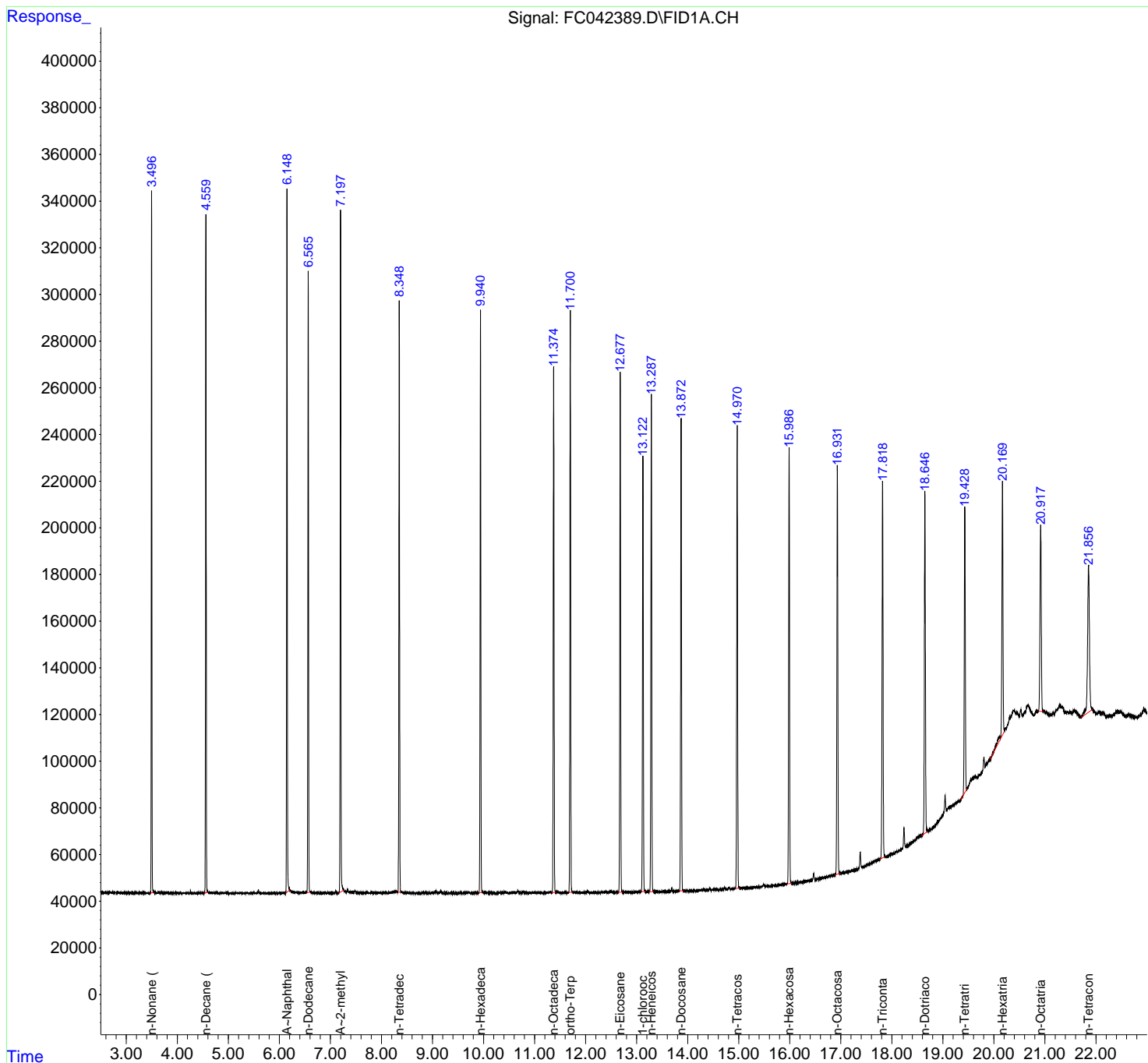
(f)=RT Delta > 1/2 Window

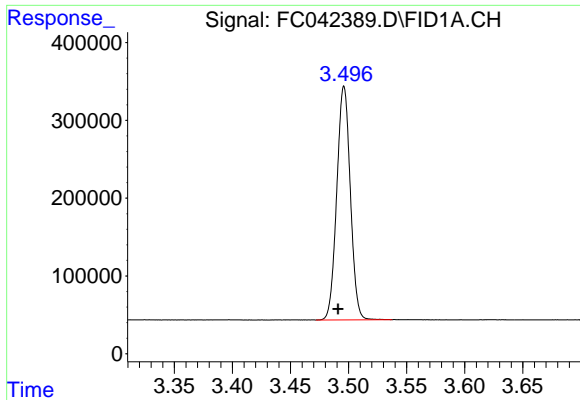
(m)=manual int.

Data Path : Z:\pestpcsrv\HPCHEM1\FID_C\Data\FC071519AL\
 Data File : FC042389.D
 Signal(s) : FID1A.CH
 Acq On : 15 Jul 2019 22:39
 Operator : DD\AJ
 Sample : 20 PPM ALIPHATIC HC STD
 Misc :
 ALS Vial : 2 Sample Multiplier: 1

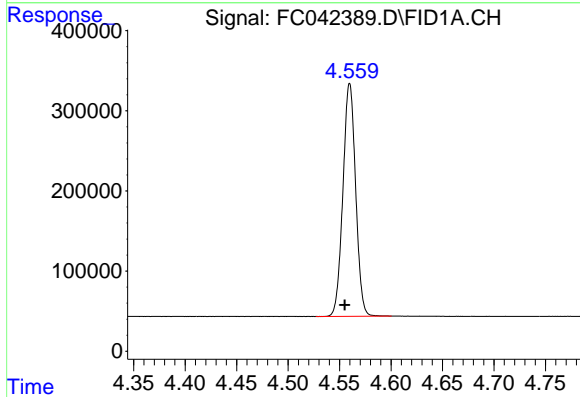
Integration File: autoint1.e
 Quant Time: Jul 16 01:42:08 2019
 Quant Method : Z:\pestpcsrv\HPCHEM1\FID_C\Method\Aliphatic EPH 070919.M
 Quant Title : GC Extractables
 QLast Update : Wed Jul 10 08:56:11 2019
 Response via : Initial Calibration
 Integrator: ChemStation 6890 Scale Mode: Large solvent peaks clipped

Volume Inj. : 1 ul
 Signal Phase : Rxi-1ms
 Signal Info : 20M x 0.18mm x 0.18um

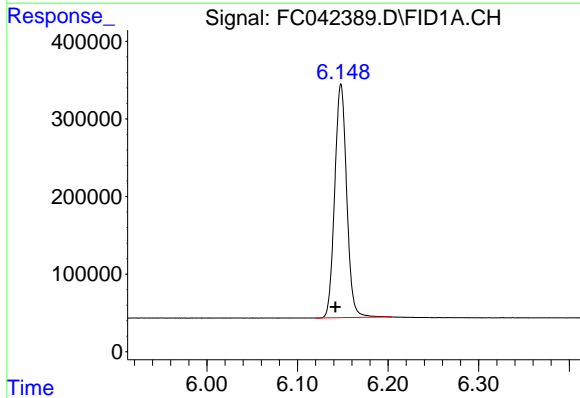




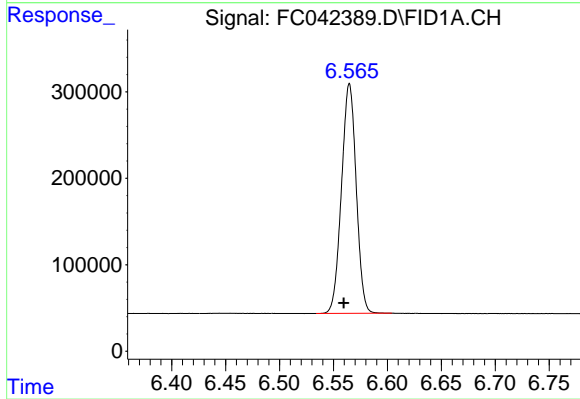
#1 n-Nonane (C9)
R.T.: 3.496 min
Delta R.T.: 0.005 min
Response: 2437329
Conc: 20.93 ug/ml



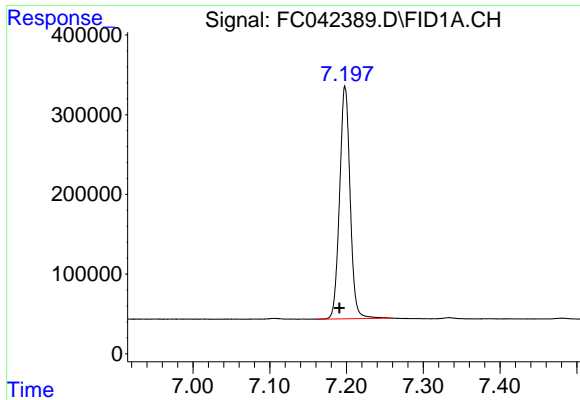
#2 n-Decane (C10)
R.T.: 4.560 min
Delta R.T.: 0.005 min
Response: 2499753
Conc: 21.19 ug/ml



#3 A~Naphthalene (C11.7)
R.T.: 6.148 min
Delta R.T.: 0.006 min
Response: 2764036
Conc: 21.29 ug/ml

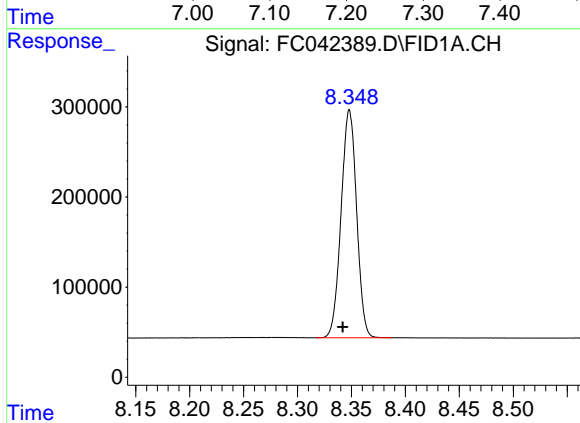


#4 n-Dodecane (C12)
R.T.: 6.565 min
Delta R.T.: 0.005 min
Response: 2527629
Conc: 21.30 ug/ml



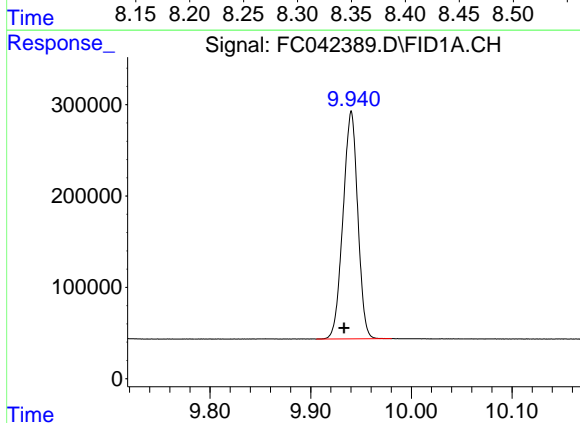
#5 A~2-methylnaphthalene (C12.89)

R.T.: 7.198 min
Delta R.T.: 0.007 min
Response: 2780938
Conc: 21.40 ug/ml



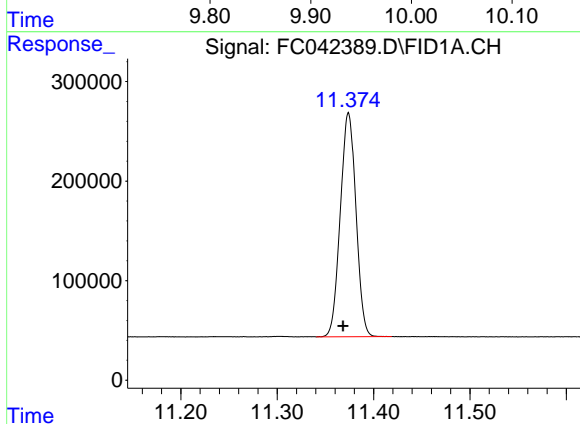
#6 n-Tetradecane (C14)

R.T.: 8.348 min
Delta R.T.: 0.006 min
Response: 2535919
Conc: 21.31 ug/ml



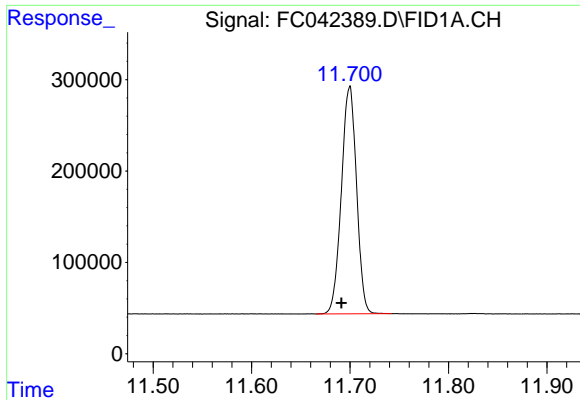
#7 n-Hexadecane (C16)

R.T.: 9.940 min
Delta R.T.: 0.007 min
Response: 2537911
Conc: 21.14 ug/ml



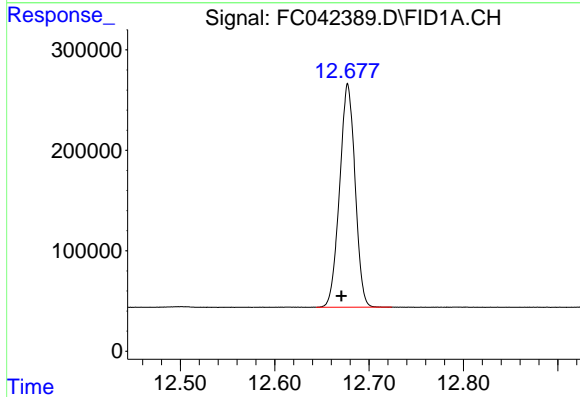
#8 n-Octadecane (C18)

R.T.: 11.374 min
Delta R.T.: 0.006 min
Response: 2536033
Conc: 20.78 ug/ml



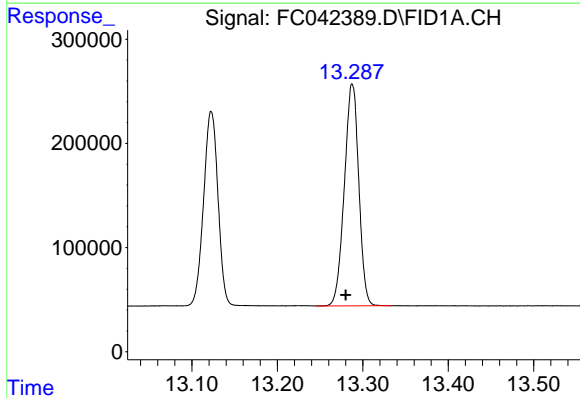
#9 ortho-Terphenyl (SURR)

R.T.: 11.700 min
 Delta R.T.: 0.008 min
 Response: 2664355
 Conc: 20.13 ug/ml



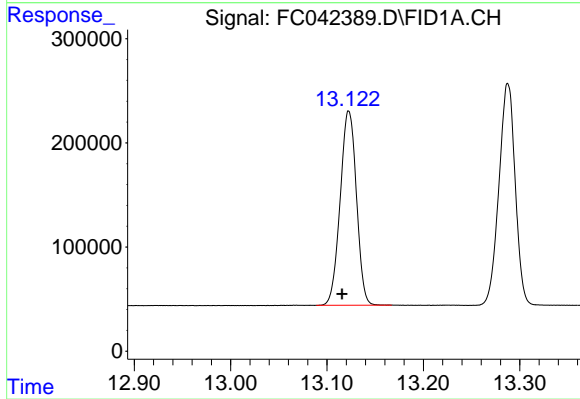
#10 n-Eicosane (C20)

R.T.: 12.677 min
 Delta R.T.: 0.007 min
 Response: 2529961
 Conc: 20.29 ug/ml



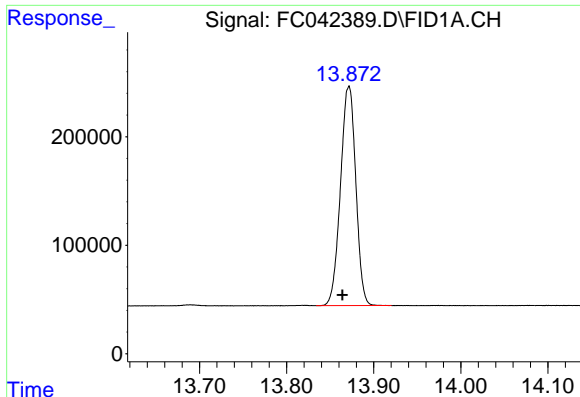
#11 n-Heneicosane (C21)

R.T.: 13.288 min
 Delta R.T.: 0.008 min
 Response: 2502532
 Conc: 19.99 ug/ml



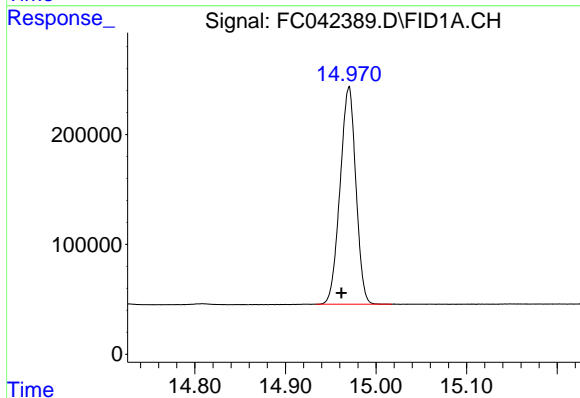
#12 1-chlorooctadecane (SURR)

R.T.: 13.123 min
 Delta R.T.: 0.007 min
 Response: 2179225
 Conc: 19.88 ug/ml



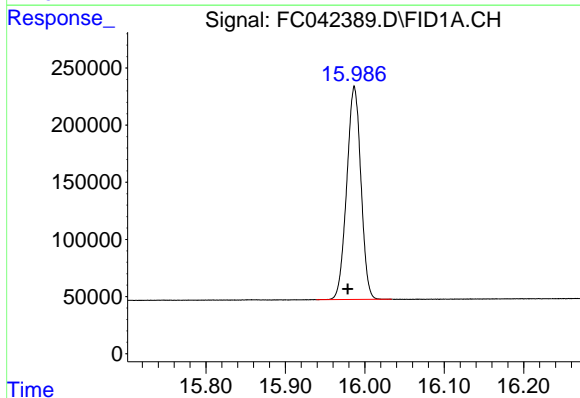
#13 n-Docosane (C22)

R.T.: 13.872 min
Delta R.T.: 0.007 min
Response: 2469644
Conc: 19.69 ug/ml



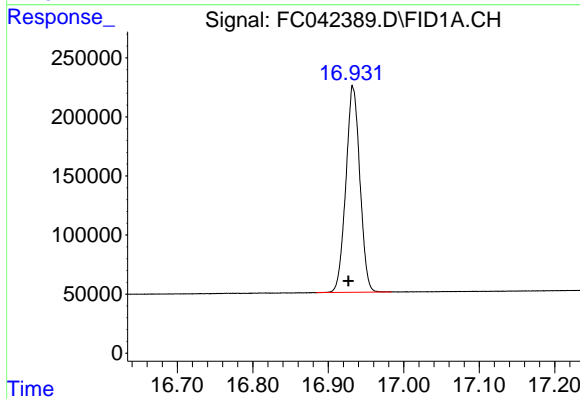
#14 n-Tetracosane (C24)

R.T.: 14.970 min
Delta R.T.: 0.008 min
Response: 2400817
Conc: 18.95 ug/ml



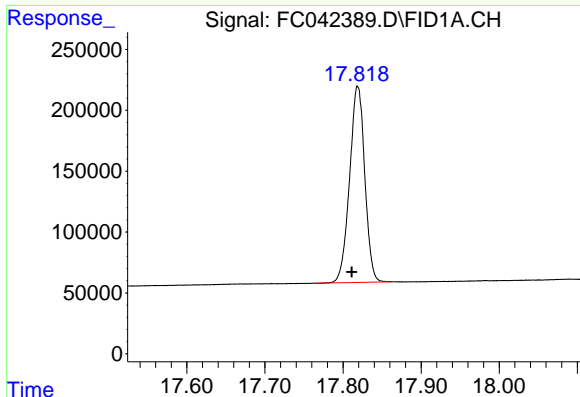
#15 n-Hexacosane (C26)

R.T.: 15.987 min
Delta R.T.: 0.008 min
Response: 2311779
Conc: 18.28 ug/ml



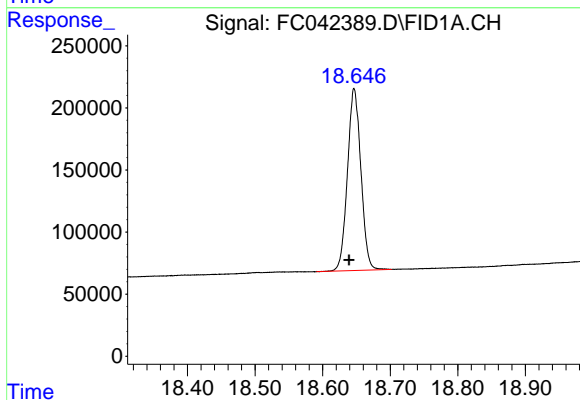
#16 n-Octacosane (C28)

R.T.: 16.933 min
Delta R.T.: 0.006 min
Response: 2254167
Conc: 17.86 ug/ml



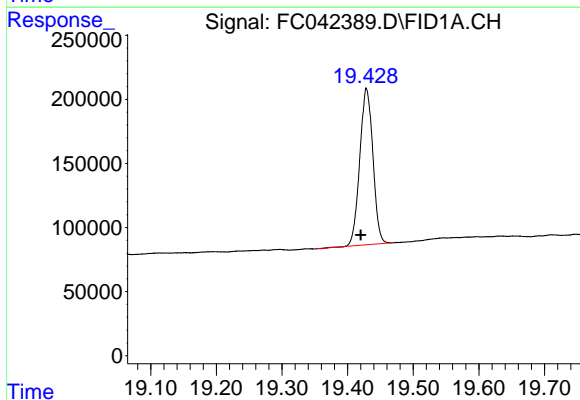
#17 n-Tricontane (C30)

R.T.: 17.819 min
Delta R.T.: 0.008 min
Response: 2177659
Conc: 17.76 ug/ml



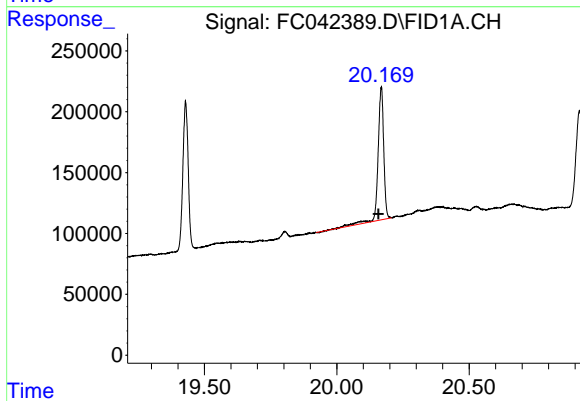
#18 n-Dotriacontane (C32)

R.T.: 18.647 min
Delta R.T.: 0.007 min
Response: 2023106
Conc: 18.11 ug/ml



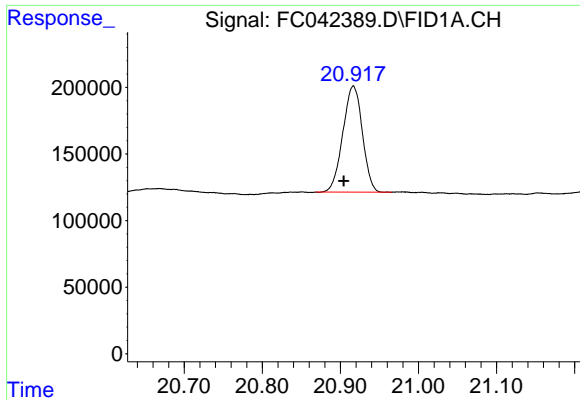
#19 n-Tetratriacontane (C34)

R.T.: 19.429 min
Delta R.T.: 0.009 min
Response: 1696908
Conc: 18.32 ug/ml



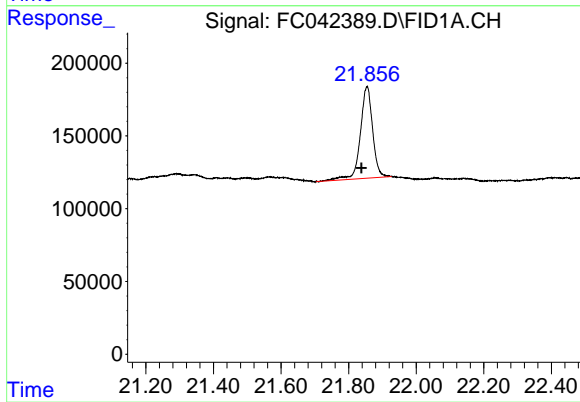
#20 n-Hexatriacontane (C36)

R.T.: 20.168 min
Delta R.T.: 0.010 min
Response: 1633620
Conc: 20.50 ug/ml



#21 n-Octatriacontane (C38)

R.T.: 20.917 min
Delta R.T.: 0.012 min
Response: 1384467
Conc: 19.31 ug/ml



#22 n-Tetracontane (C40)

R.T.: 21.855 min
Delta R.T.: 0.018 min
Response: 1584255
Conc: 22.83 ug/ml