

Data Path : Z:\pestpcbsrv\HPCHEM1\FID\_C\Data\FC071524AL\  
 Data File : FC066790.D  
 Signal(s) : FID1A.ch  
 Acq On : 15 Jul 2024 10:02  
 Operator : YP/AJ  
 Sample : 100 PPM ALIPHATIC HC STD1  
 Misc :  
 ALS Vial : 7 Sample Multiplier: 1

Instrument :  
 FID\_C  
 ClientSampleId :

Integration File: autoint1.e  
 Quant Time: Jul 15 13:53:00 2024  
 Quant Method : Z:\pestpcbsrv\HPCHEM1\FID\_C\Method\Aliphatic EPH 071524.M  
 Quant Title : GC Extractables  
 QLast Update : Mon Jul 15 13:49:40 2024  
 Response via : Initial Calibration  
 Integrator: ChemStation

Volume Inj. : 1 ul  
 Signal Phase : Rxi-1ms  
 Signal Info : 20M x 0.18mm x 0.18um

Compound	R.T.	Response	Conc Units
-----			
System Monitoring Compounds			
9) S ortho-Terphenyl (SURR)	11.535	16949104	105.490 ug/ml
Spiked Amount	50.000	Recovery	= 210.98%
12) S 1-chlorooctadecane (S...	12.971	12582826	106.164 ug/ml
Spiked Amount	50.000	Recovery	= 212.33%
Target Compounds			
1) T n-Nonane (C9)	3.290	14444009	100.383 ug/ml
2) T n-Decane (C10)	4.359	15960387	104.052 ug/ml
3) T A~Naphthalene (C11.7)	5.943	17413456	104.616 ug/ml
4) T n-Dodecane (C12)	6.380	16685239	105.992 ug/ml
5) T A~2-methylnaphthalene...	7.002	17252949	106.208 ug/ml
6) T n-Tetradecane (C14)	8.176	16316109	105.893 ug/ml
7) T n-Hexadecane (C16)	9.778	16600753	105.437 ug/ml
8) T n-Octadecane (C18)	11.222	16442356	105.422 ug/ml
10) T n-Eicosane (C20)	12.529	15436773	105.460 ug/ml
11) T n-Heneicosane (C21)	13.141	15016420	105.308 ug/ml
13) T n-Docosane (C22)	13.727	14804898	105.378 ug/ml
14) T n-Tetracosane (C24)	14.828	14525999	105.096 ug/ml
15) T n-Hexacosane (C26)	15.849	14173283	105.030 ug/ml
16) T n-Octacosane (C28)	16.799	13865132	105.193 ug/ml
17) T n-Tricontane (C30)	17.687	14101661	105.143 ug/ml
18) T n-Dotriacontane (C32)	18.519	13785992	104.819 ug/ml
19) T n-Tetratriacontane (C34)	19.302	13399880	103.790 ug/ml
20) T n-Hexatriacontane (C36)	20.041	12758150	104.802 ug/ml
21) T n-Octatriacontane (C38)	20.772	12318489	105.155 ug/ml
22) T n-Tetracontane (C40)	21.674	11608807	103.386 ug/ml

(f)=RT Delta > 1/2 Window

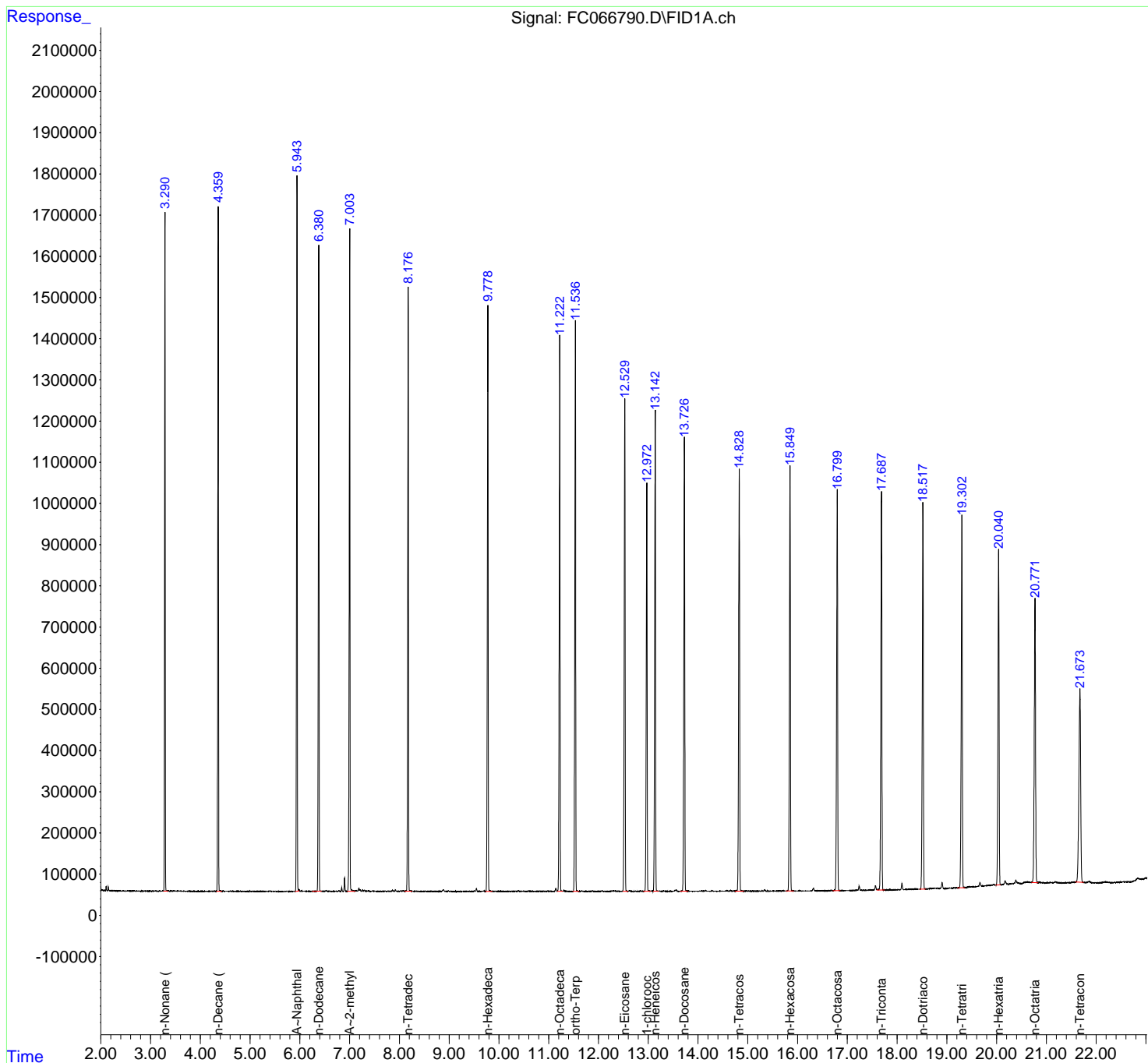
(m)=manual int.

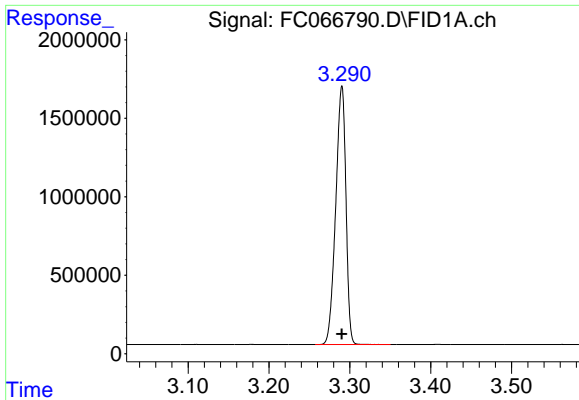
Data Path : Z:\pestpcbsrv\HPCHEM1\FID\_C\Data\FC071524AL\  
 Data File : FC066790.D  
 Signal(s) : FID1A.ch  
 Acq On : 15 Jul 2024 10:02  
 Operator : YP/AJ  
 Sample : 100 PPM ALIPHATIC HC STD1  
 Misc :  
 ALS Vial : 7 Sample Multiplier: 1

Instrument :  
 FID\_C  
 ClientSampleId :

Integration File: autoint1.e  
 Quant Time: Jul 15 13:53:00 2024  
 Quant Method : Z:\pestpcbsrv\HPCHEM1\FID\_C\Method\Aliphatic EPH 071524.M  
 Quant Title : GC Extractables  
 QLast Update : Mon Jul 15 13:49:40 2024  
 Response via : Initial Calibration  
 Integrator: ChemStation

Volume Inj. : 1 ul  
 Signal Phase : Rxi-1ms  
 Signal Info : 20M x 0.18mm x 0.18um

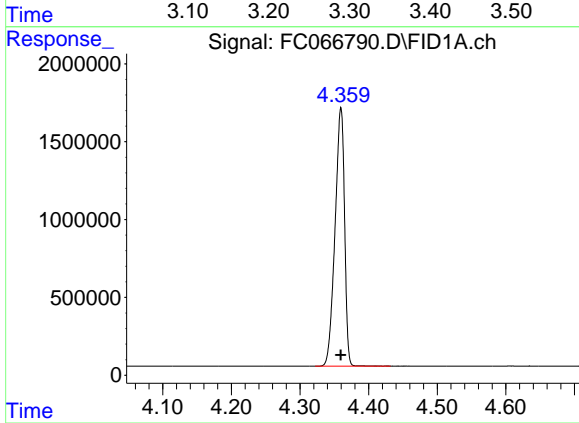




#1 n-Nonane (C9)

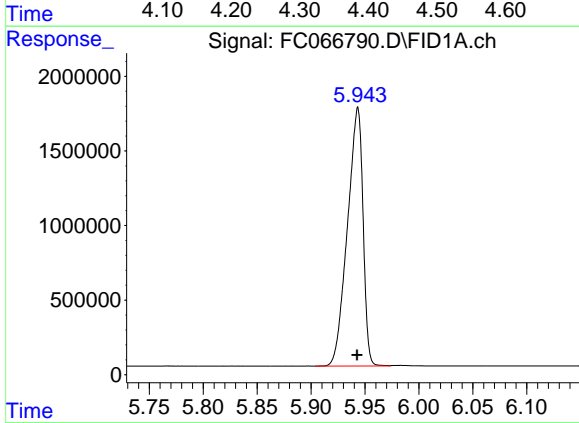
R.T.: 3.290 min  
 Delta R.T.: 0.000 min  
 Response: 14444009  
 Conc: 100.38 ug/ml

Instrument :  
 FID\_C  
 ClientSampleId :



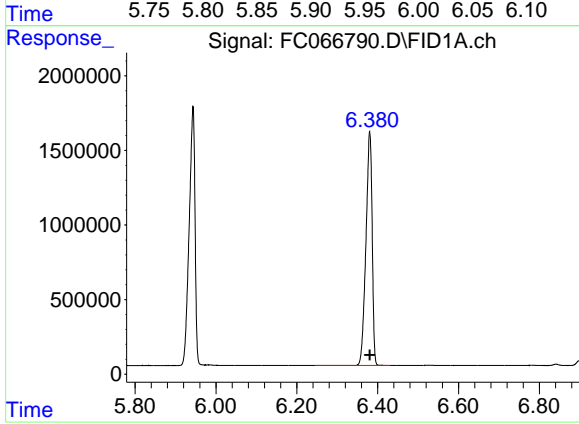
#2 n-Decane (C10)

R.T.: 4.359 min  
 Delta R.T.: 0.000 min  
 Response: 15960387  
 Conc: 104.05 ug/ml



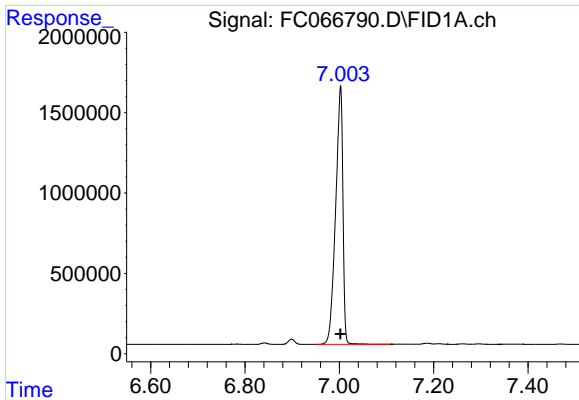
#3 A~Naphthalene (C11.7)

R.T.: 5.943 min  
 Delta R.T.: 0.000 min  
 Response: 17413456  
 Conc: 104.62 ug/ml



#4 n-Dodecane (C12)

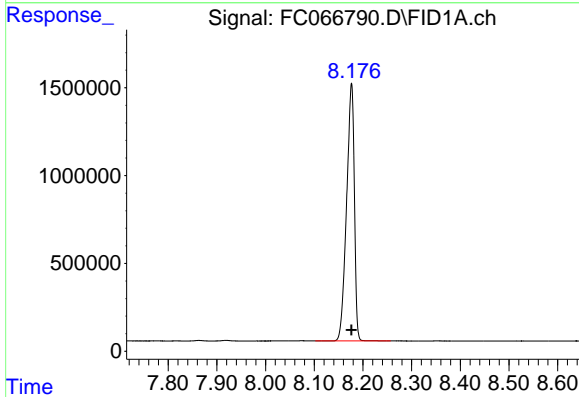
R.T.: 6.380 min  
 Delta R.T.: 0.000 min  
 Response: 16685239  
 Conc: 105.99 ug/ml



#5 A~2-methylnaphthalene (C12.89)

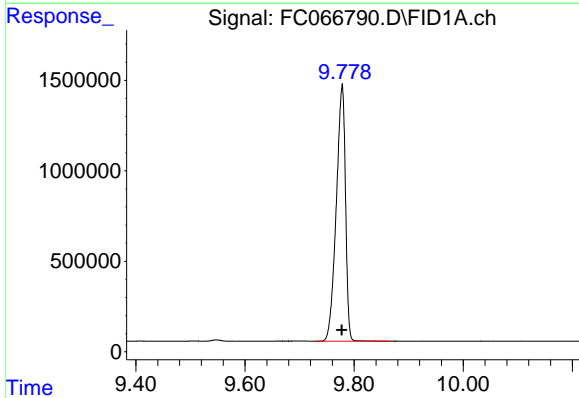
R.T.: 7.002 min  
 Delta R.T.: 0.000 min  
 Response: 17252949  
 Conc: 106.21 ug/ml

Instrument :  
 FID\_C  
 ClientSampleId :



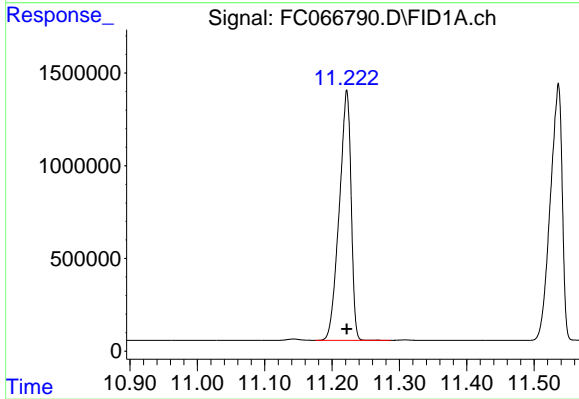
#6 n-Tetradecane (C14)

R.T.: 8.176 min  
 Delta R.T.: 0.000 min  
 Response: 16316109  
 Conc: 105.89 ug/ml



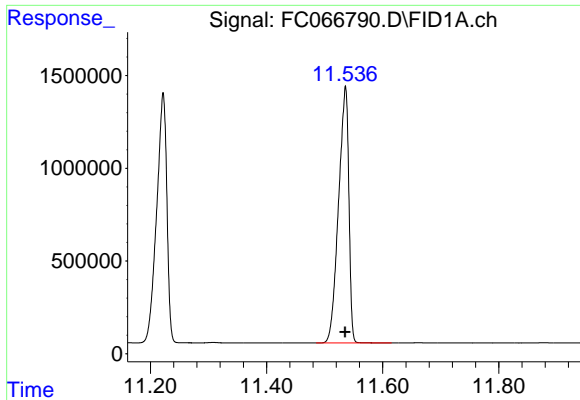
#7 n-Hexadecane (C16)

R.T.: 9.778 min  
 Delta R.T.: 0.000 min  
 Response: 16600753  
 Conc: 105.44 ug/ml



#8 n-Octadecane (C18)

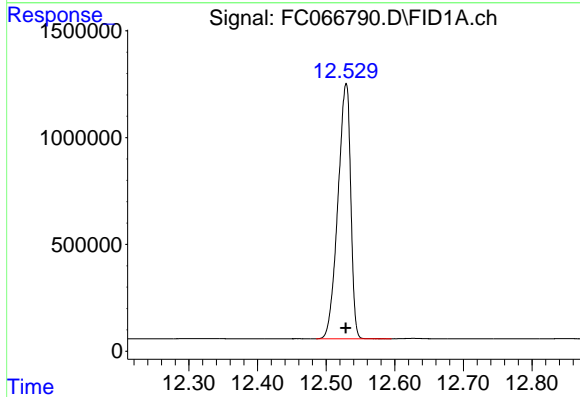
R.T.: 11.222 min  
 Delta R.T.: 0.000 min  
 Response: 16442356  
 Conc: 105.42 ug/ml



#9 ortho-Terphenyl (SURR)

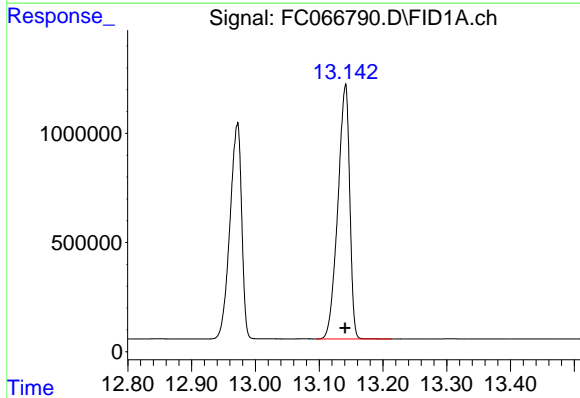
R.T.: 11.535 min  
 Delta R.T.: 0.000 min  
 Response: 16949104  
 Conc: 105.49 ug/ml

Instrument :  
 FID\_C  
 ClientSampleId :



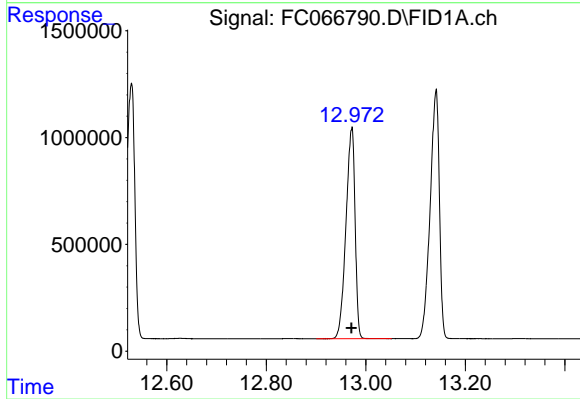
#10 n-Eicosane (C20)

R.T.: 12.529 min  
 Delta R.T.: 0.000 min  
 Response: 15436773  
 Conc: 105.46 ug/ml



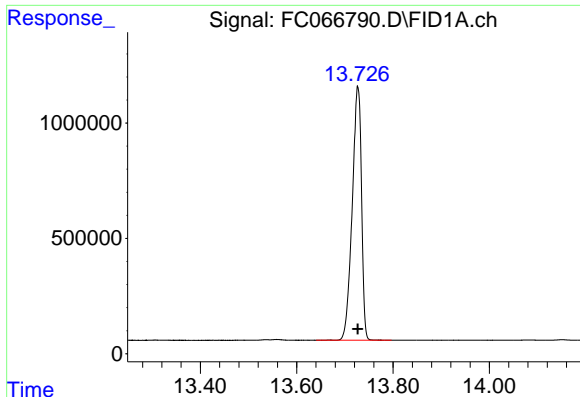
#11 n-Heneicosane (C21)

R.T.: 13.141 min  
 Delta R.T.: 0.000 min  
 Response: 15016420  
 Conc: 105.31 ug/ml



#12 1-chlorooctadecane (SURR)

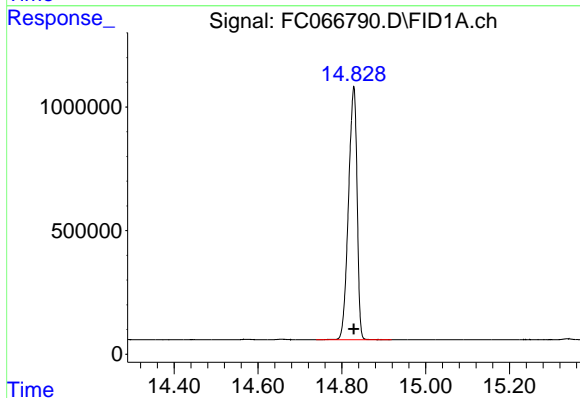
R.T.: 12.971 min  
 Delta R.T.: 0.000 min  
 Response: 12582826  
 Conc: 106.16 ug/ml



#13 n-Docosane (C22)

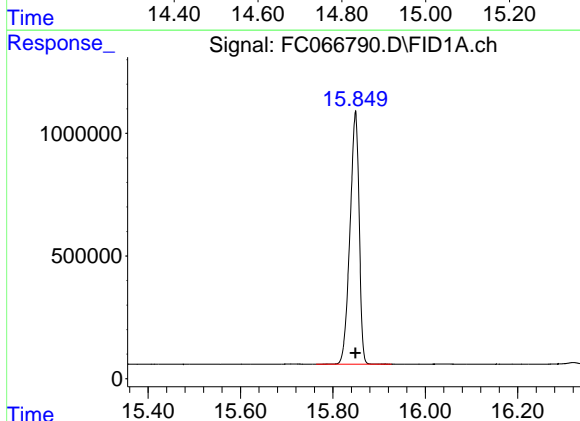
R.T.: 13.727 min  
 Delta R.T.: 0.000 min  
 Response: 14804898  
 Conc: 105.38 ug/ml

Instrument :  
 FID\_C  
 ClientSampleId :



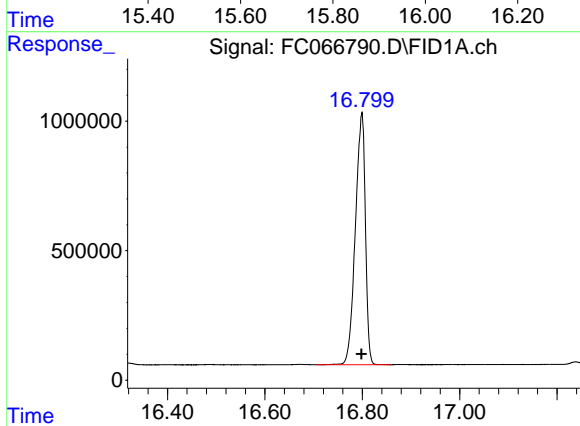
#14 n-Tetracosane (C24)

R.T.: 14.828 min  
 Delta R.T.: 0.000 min  
 Response: 14525999  
 Conc: 105.10 ug/ml



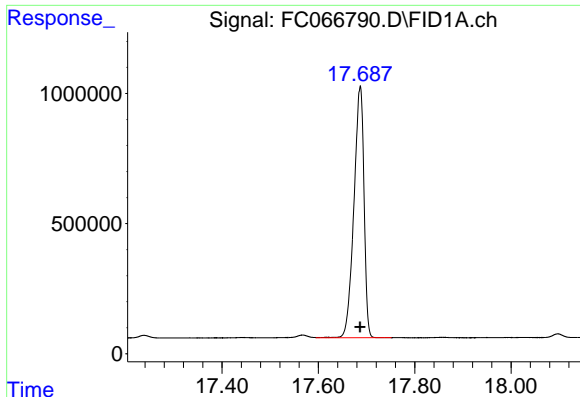
#15 n-Hexacosane (C26)

R.T.: 15.849 min  
 Delta R.T.: 0.000 min  
 Response: 14173283  
 Conc: 105.03 ug/ml



#16 n-Octacosane (C28)

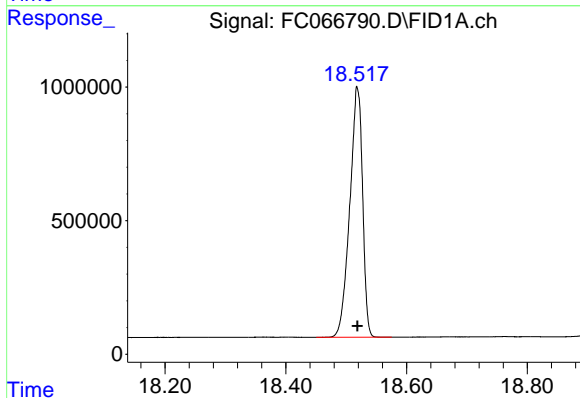
R.T.: 16.799 min  
 Delta R.T.: 0.000 min  
 Response: 13865132  
 Conc: 105.19 ug/ml



#17 n-Tricontane (C30)

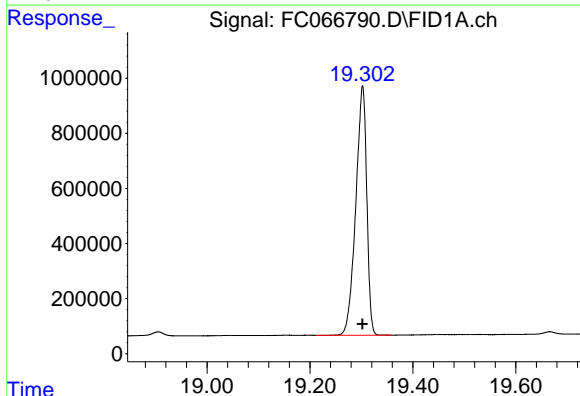
R.T.: 17.687 min  
 Delta R.T.: 0.000 min  
 Response: 14101661  
 Conc: 105.14 ug/ml

Instrument :  
 FID\_C  
 ClientSampleId :



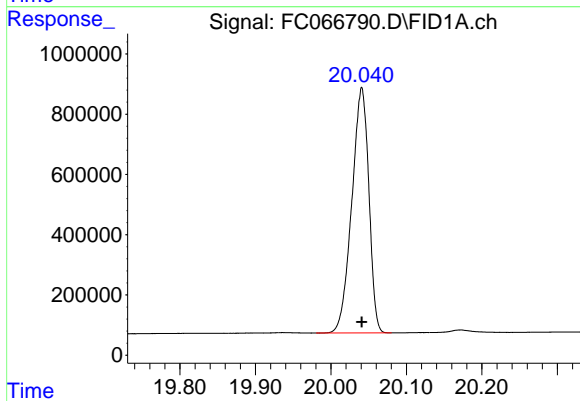
#18 n-Dotriacontane (C32)

R.T.: 18.519 min  
 Delta R.T.: 0.000 min  
 Response: 13785992  
 Conc: 104.82 ug/ml



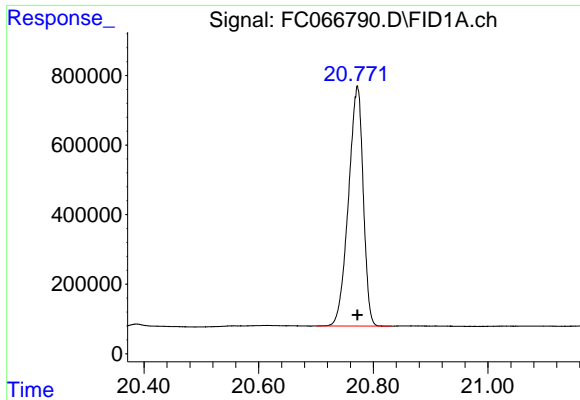
#19 n-Tetratriacontane (C34)

R.T.: 19.302 min  
 Delta R.T.: 0.000 min  
 Response: 13399880  
 Conc: 103.79 ug/ml



#20 n-Hexatriacontane (C36)

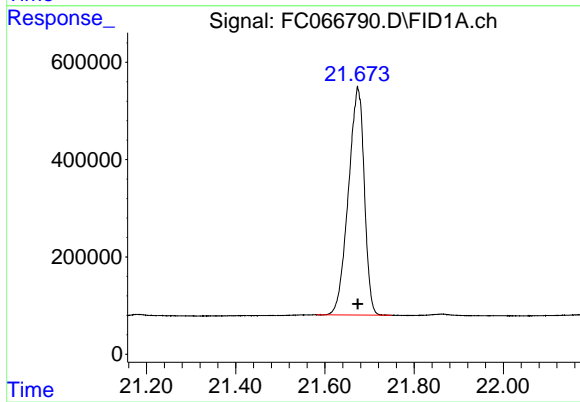
R.T.: 20.041 min  
 Delta R.T.: 0.000 min  
 Response: 12758150  
 Conc: 104.80 ug/ml



#21 n-Octatriacontane (C38)

R.T.: 20.772 min  
Delta R.T.: 0.000 min  
Response: 12318489  
Conc: 105.16 ug/ml

Instrument :  
FID\_C  
ClientSampleId :



#22 n-Tetracontane (C40)

R.T.: 21.674 min  
Delta R.T.: 0.000 min  
Response: 11608807  
Conc: 103.39 ug/ml