

Data Path : Z:\pestpcbsrv\HPCHEM1\FID\_C\Data\FC071618AL\  
Data File : FC035405.D  
Signal(s) : FID1A.CH  
Acq On : 17 Jul 2018 8:51  
Operator : AJ\SJ  
Sample : I.BLK  
Misc :  
ALS Vial : 1 Sample Multiplier: 1

Integration File: autoint1.e  
Quant Time: Jul 17 10:18:02 2018  
Quant Method : Z:\PESTPCBSRV\HPCHEM1\FID\_C\Method\Alaphatic EPH 062518.M  
Quant Title : GC Extractables  
QLast Update : Mon Jun 25 14:27:40 2018  
Response via : Initial Calibration  
Integrator: ChemStation 6890 Scale Mode: Large solvent peaks clipped

Volume Inj. : 1 ul  
Signal Phase : Rxi-1ms  
Signal Info : 20M x 0.18mm x 0.18um

Compound	R.T.	Response	Conc Units
-----			
System Monitoring Compounds			
Target Compounds			
-----			

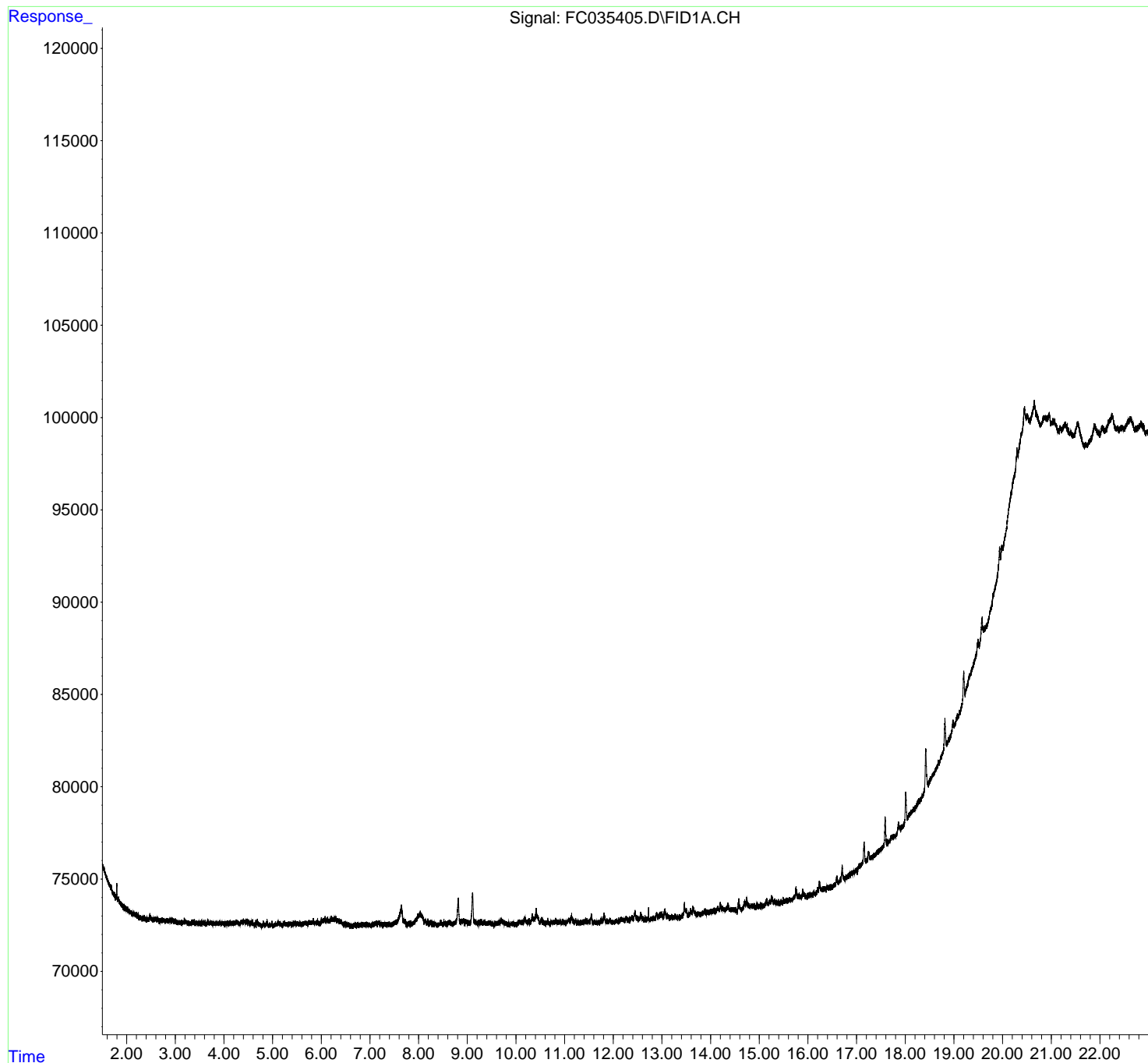
(f)=RT Delta > 1/2 Window

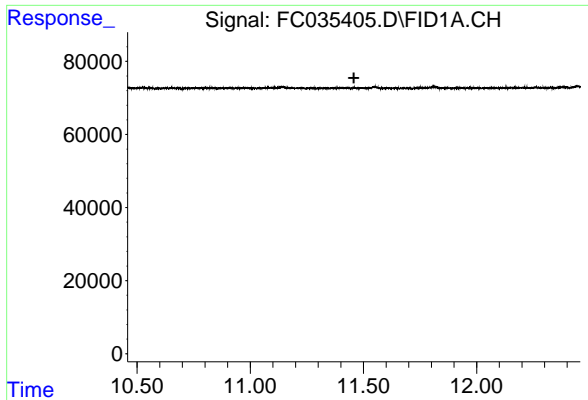
(m)=manual int.

Data Path : Z:\pestpcbsrv\HPCHEM1\FID\_C\Data\FC071618AL\  
Data File : FC035405.D  
Signal(s) : FID1A.CH  
Acq On : 17 Jul 2018 8:51  
Operator : AJ\SJ  
Sample : I.BLK  
Misc :  
ALS Vial : 1 Sample Multiplier: 1

Integration File: autoint1.e  
Quant Time: Jul 17 10:18:02 2018  
Quant Method : Z:\PESTPCBSRV\HPCHEM1\FID\_C\Method\Aliphatic EPH 062518.M  
Quant Title : GC Extractables  
QLast Update : Mon Jun 25 14:27:40 2018  
Response via : Initial Calibration  
Integrator: ChemStation 6890 Scale Mode: Large solvent peaks clipped

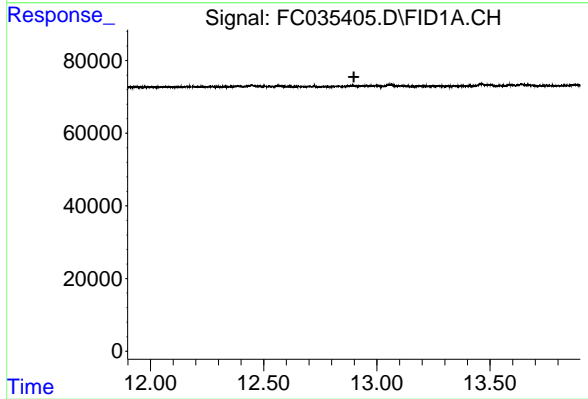
Volume Inj. : 1 ul  
Signal Phase : Rxi-1ms  
Signal Info : 20M x 0.18mm x 0.18um





#9 ortho-Terphenyl (SURR)

R.T.: 0.000 min  
Exp R.T. : 11.458 min  
Response: 0  
Conc: N.D.



#12 1-chlorooctadecane (SURR)

R.T.: 0.000 min  
Exp R.T. : 12.898 min  
Response: 0  
Conc: N.D.