

Data Path : Z:\pestpcbsrv\HPCHEM1\FID\_C\Data\FC071620AL\  
 Data File : FC048474.D  
 Signal(s) : FID1A.CH  
 Acq On : 16 Jul 2020 22:37  
 Operator : DD\AJ  
 Sample : L3183-14  
 Misc :  
 ALS Vial : 18 Sample Multiplier: 1

Integration File: sample.E  
 Quant Time: Jul 17 02:03:04 2020  
 Quant Method : Z:\pestpcbsrv\HPCHEM1\FID\_C\Method\Alaphatic EPH 070820.M  
 Quant Title : GC Extractables  
 QLast Update : Wed Jul 08 03:03:00 2020  
 Response via : Initial Calibration  
 Integrator: ChemStation 6890 Scale Mode: Large solvent peaks clipped

Volume Inj. : 1 ul  
 Signal Phase : Rxi-1ms  
 Signal Info : 20M x 0.18mm x 0.18um

Compound	R.T.	Response	Conc Units
-----			
System Monitoring Compounds			
9) S ortho-Terphenyl (SURR)	11.685	4492955	32.736 ug/ml
Spiked Amount	50.000	Recovery	= 65.47%
12) S 1-chlorooctadecane (S...	13.118	3524330	31.275 ug/ml
Spiked Amount	50.000	Recovery	= 62.55%

Target Compounds

-----

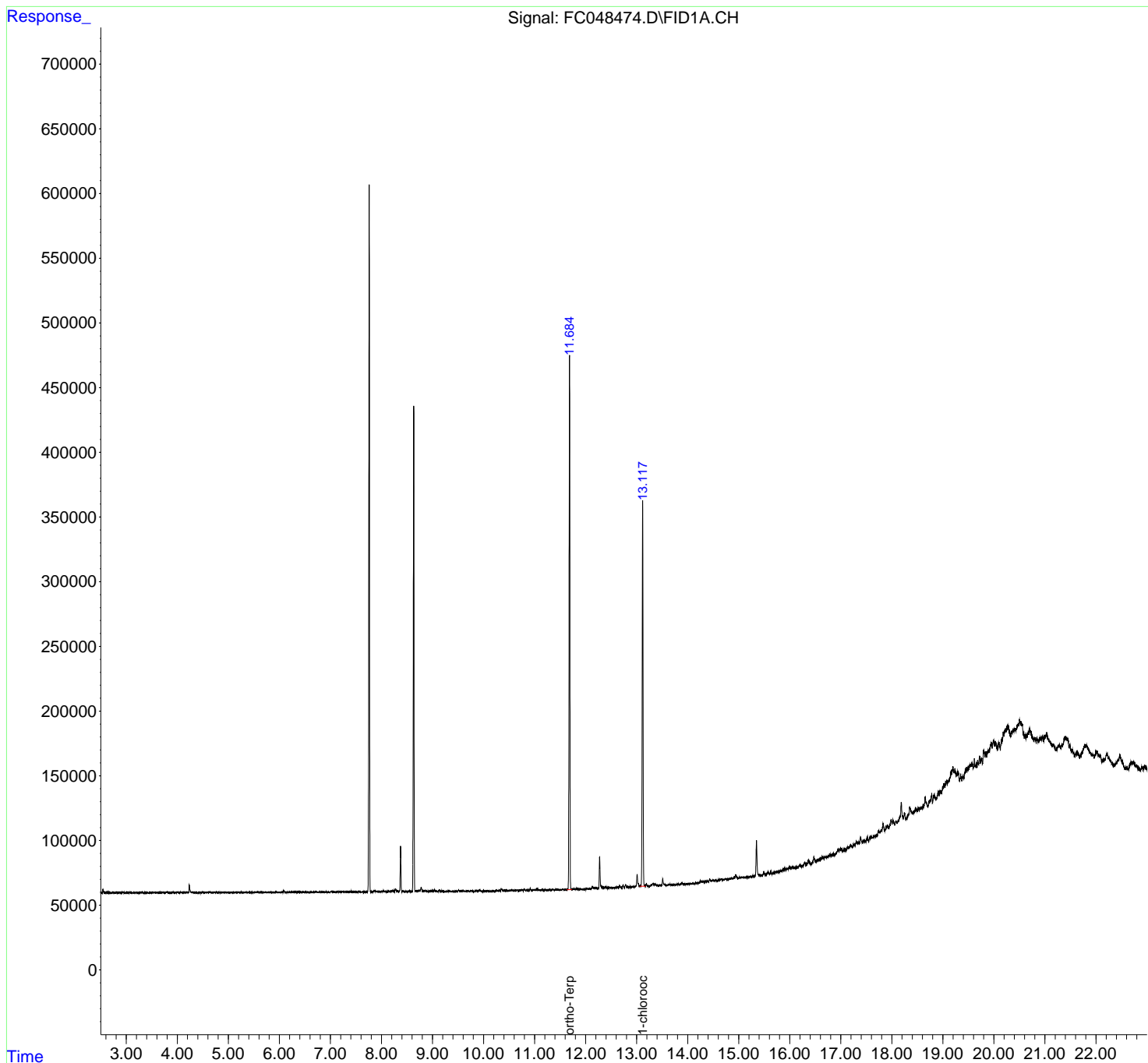
(f)=RT Delta > 1/2 Window

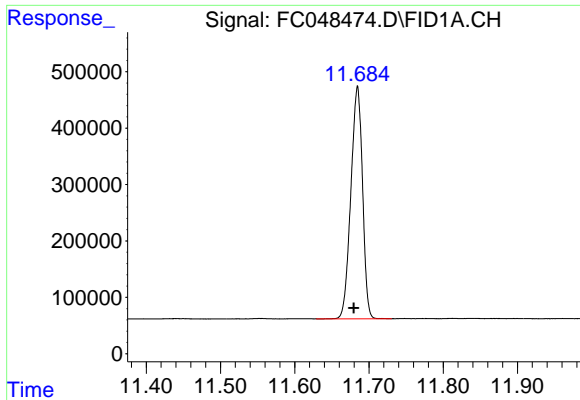
(m)=manual int.

Data Path : Z:\pestpcbsrv\HPCHEM1\FID\_C\Data\FC071620AL\  
Data File : FC048474.D  
Signal(s) : FID1A.CH  
Acq On : 16 Jul 2020 22:37  
Operator : DD\AJ  
Sample : L3183-14  
Misc :  
ALS Vial : 18 Sample Multiplier: 1

Integration File: sample.E  
Quant Time: Jul 17 02:03:04 2020  
Quant Method : Z:\pestpcbsrv\HPCHEM1\FID\_C\Method\Aliphatic EPH 070820.M  
Quant Title : GC Extractables  
QLast Update : Wed Jul 08 03:03:00 2020  
Response via : Initial Calibration  
Integrator: ChemStation 6890 Scale Mode: Large solvent peaks clipped

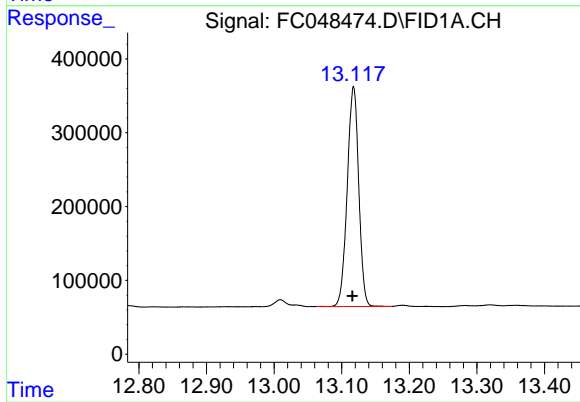
Volume Inj. : 1 ul  
Signal Phase : Rxi-1ms  
Signal Info : 20M x 0.18mm x 0.18um





#9 ortho-Terphenyl (SURR)

R.T.: 11.685 min  
Delta R.T.: 0.005 min  
Response: 4492955  
Conc: 32.74 ug/ml



#12 1-chlorooctadecane (SURR)

R.T.: 13.118 min  
Delta R.T.: 0.002 min  
Response: 3524330  
Conc: 31.28 ug/ml