

Data Path : Z:\pestpcbsrv\HPCHEM1\FID_C\Data\FC071624AL\
 Data File : FC066820.D
 Signal(s) : FID1A.ch
 Acq On : 17 Jul 2024 03:37
 Operator : YP/AJ
 Sample : P3246-24
 Misc :
 ALS Vial : 30 Sample Multiplier: 1

Instrument :
 FID_C
ClientSampleId :
 WC-CTW2-BL-05-G

Manual Integrations
APPROVED

Reviewed By :Yogesh Patel 07/17/2024
 Supervised By :Ankita Jodhani 07/17/2024

Integration File: autoint1.e
 Quant Time: Jul 17 05:37:31 2024
 Quant Method : Z:\pestpcbsrv\HPCHEM1\FID_C\Method\Aliphatic EPH 071524.M
 Quant Title : GC Extractables
 QLast Update : Mon Jul 15 13:58:41 2024
 Response via : Initial Calibration
 Integrator: ChemStation

Volume Inj. : 1 ul
 Signal Phase : Rxi-1ms
 Signal Info : 20M x 0.18mm x 0.18um

Compound	R.T.	Response	Conc Units

System Monitoring Compounds			
12) S 1-chlorooctadecane (S...	12.957	2242514	20.055 ug/mlm
Spiked Amount	50.000	Recovery	= 40.11%

Target Compounds

(f)=RT Delta > 1/2 Window (m)=manual int.

Data Path : Z:\pestpcbsrv\HPCHEM1\FID_C\Data\FC071624AL\
Data File : FC066820.D
Signal(s) : FID1A.ch
Acq On : 17 Jul 2024 03:37
Operator : YP/AJ
Sample : P3246-24
Misc :
ALS Vial : 30 Sample Multiplier: 1

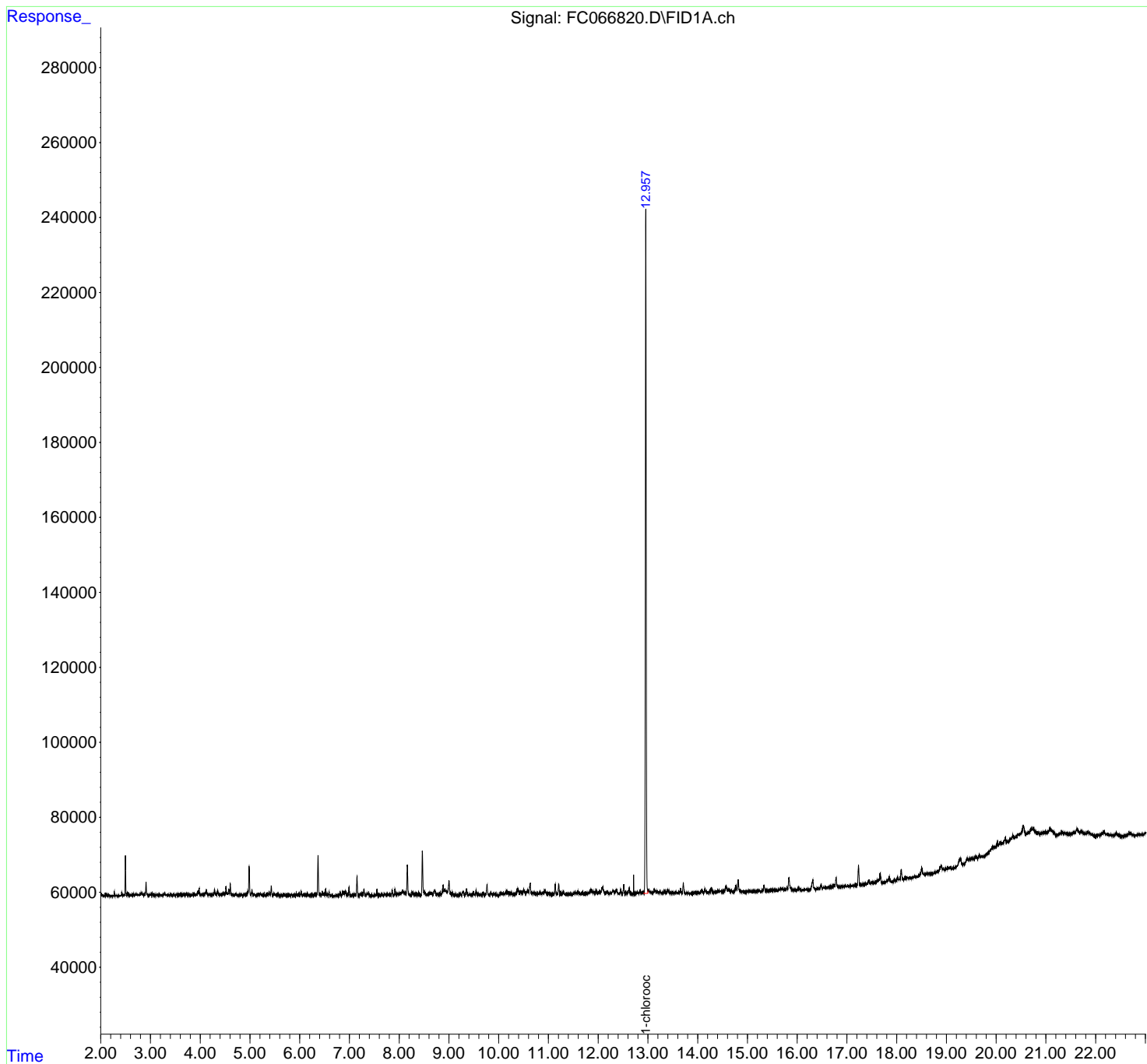
Instrument :
FID_C
ClientSampleId :
WC-CTW2-BL-05-G

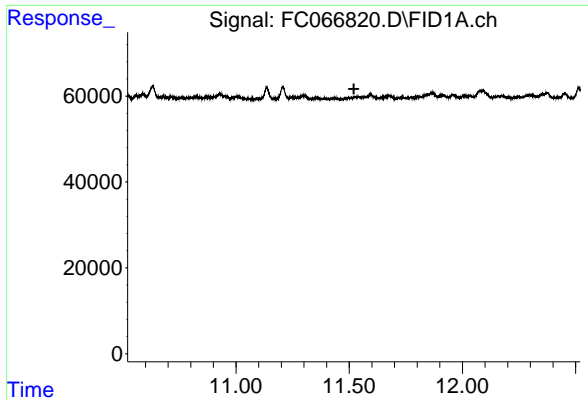
Manual Integrations
APPROVED

Reviewed By :Yogesh Patel 07/17/2024
Supervised By :Ankita Jodhani 07/17/2024

Integration File: autoint1.e
Quant Time: Jul 17 05:37:31 2024
Quant Method : Z:\pestpcbsrv\HPCHEM1\FID_C\Method\Aliphatic EPH 071524.M
Quant Title : GC Extractables
QLast Update : Mon Jul 15 13:58:41 2024
Response via : Initial Calibration
Integrator: ChemStation

Volume Inj. : 1 ul
Signal Phase : Rxi-1ms
Signal Info : 20M x 0.18mm x 0.18um





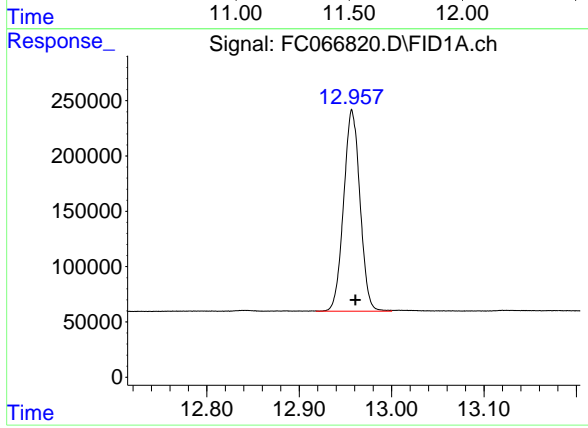
#9 ortho-Terphenyl (SURR)

R.T.: 0.000 min
 Exp R.T.: 11.521 min
 Response: 0
 Conc: N.D.

Instrument : FID_C
 ClientSampleId : WC-CTW2-BL-05-G

Manual Integrations
 APPROVED

Reviewed By :Yogesh Patel 07/17/2024
 Supervised By :Ankita Jodhani 07/17/2024



#12 1-chlorooctadecane (SURR)

R.T.: 12.957 min
 Delta R.T.: -0.004 min
 Response: 2242514
 Conc: 20.06 ug/ml m