

Data Path : Z:\pestpcbsrv\HPCHEM1\FID_C\Data\FC072020AL\
 Data File : FC048530.D
 Signal(s) : FID1A.CH
 Acq On : 20 Jul 2020 8:48
 Operator : DD\AJ
 Sample : MECL2
 Misc :
 ALS Vial : 1 Sample Multiplier: 1

Integration File: autoint1.e
 Quant Time: Jul 21 01:13:10 2020
 Quant Method : Z:\pestpcbsrv\HPCHEM1\FID_C\Method\Alaphatic EPH 070820.M
 Quant Title : GC Extractables
 QLast Update : Wed Jul 08 03:03:00 2020
 Response via : Initial Calibration
 Integrator: ChemStation 6890 Scale Mode: Large solvent peaks clipped

Volume Inj. : 1 ul
 Signal Phase : Rxi-1ms
 Signal Info : 20M x 0.18mm x 0.18um

Compound	R.T.	Response	Conc Units

System Monitoring Compounds			
Target Compounds			
10) T n-Eicosane (C20)	12.611f	491158	3.798 ug/ml
11) T n-Heneicosane (C21)	13.260	519193	4.005 ug/ml
13) T n-Docosane (C22)	13.853	445439	3.431 ug/ml
14) T n-Tetracosane (C24)	14.959	392928	2.997 ug/ml
15) T n-Hexacosane (C26)	15.980	257059	1.977 ug/ml
16) T n-Octacosane (C28)	16.931	233802	1.789 ug/ml
17) T n-Tricontane (C30)	17.817	261242	2.032 ug/ml
18) T n-Dotriacontane (C32)	18.645	353064	2.989 ug/ml
19) T n-Tetratriacontane (C34)	19.429	194945	1.746 ug/ml
20) T n-Hexatriacontane (C36)	20.207	70574	0.671 ug/ml

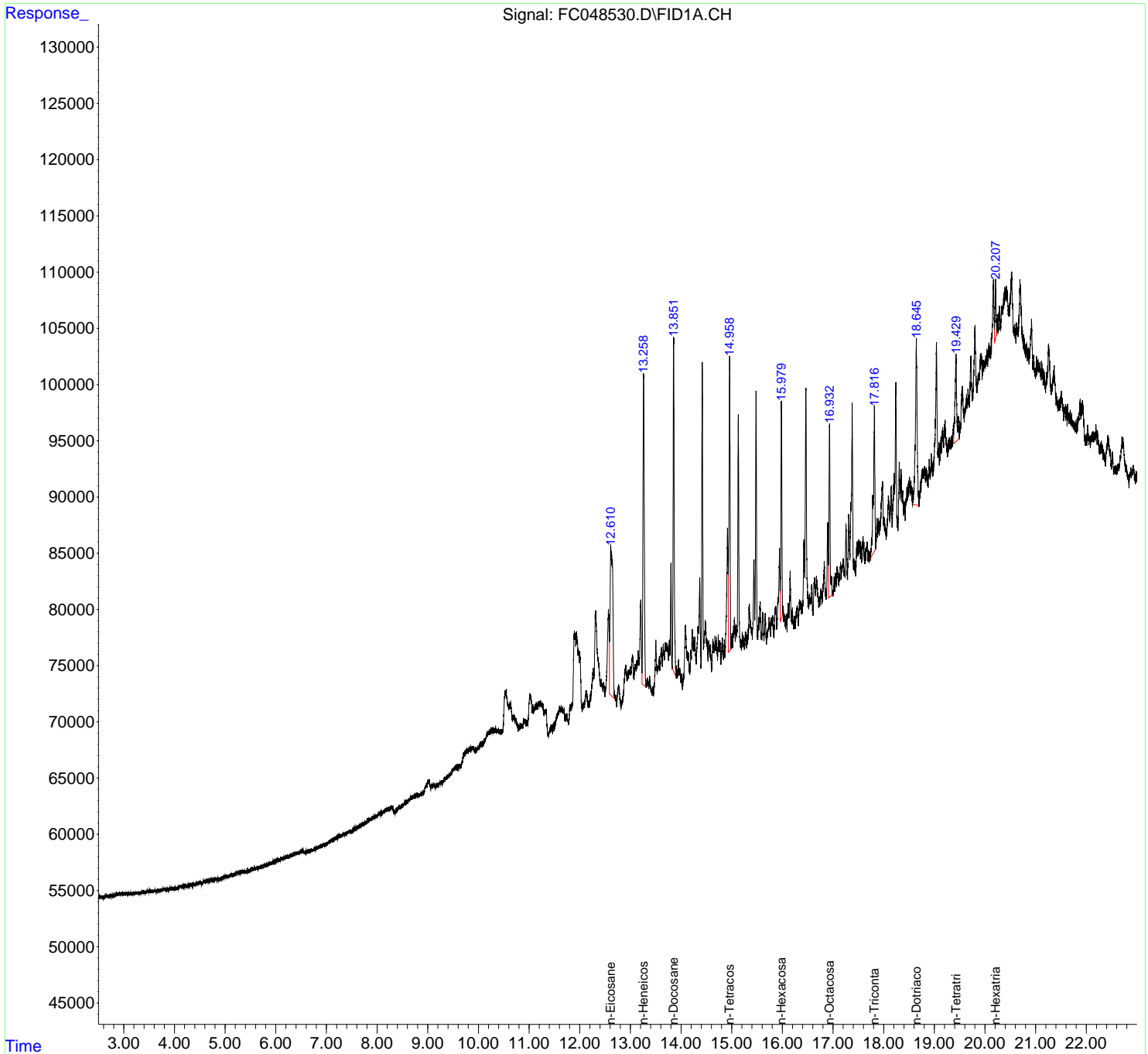
(f)=RT Delta > 1/2 Window

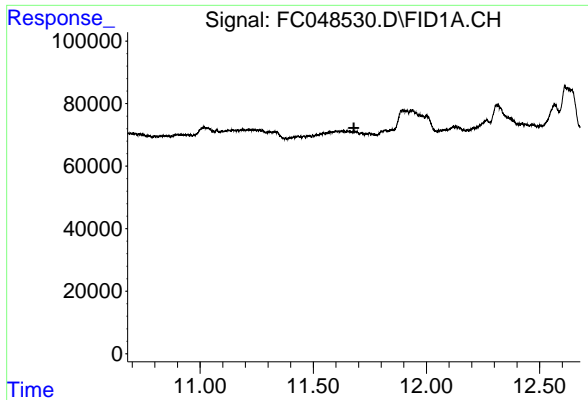
(m)=manual int.

Data Path : Z:\pestpcbsrv\HPCHEM1\FID_C\Data\FC072020AL\
 Data File : FC048530.D
 Signal(s) : FID1A.CH
 Acq On : 20 Jul 2020 8:48
 Operator : DD\AJ
 Sample : MECL2
 Misc :
 ALS Vial : 1 Sample Multiplier: 1

Integration File: autoint1.e
 Quant Time: Jul 21 01:13:10 2020
 Quant Method : Z:\pestpcbsrv\HPCHEM1\FID_C\Method\Alaphatic EPH 070820.M
 Quant Title : GC Extractables
 QLast Update : Wed Jul 08 03:03:00 2020
 Response via : Initial Calibration
 Integrator: ChemStation 6890 Scale Mode: Large solvent peaks clipped

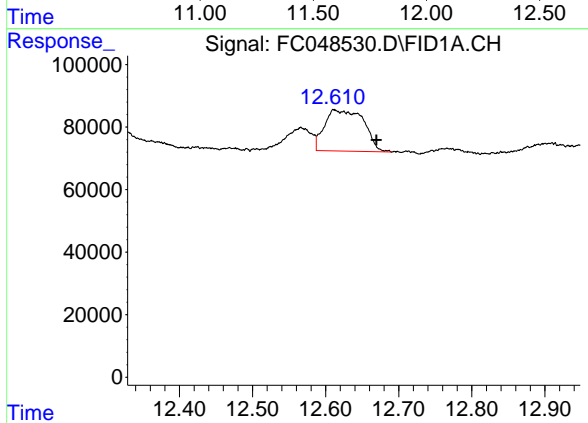
Volume Inj. : 1 ul
 Signal Phase : Rxi-1ms
 Signal Info : 20M x 0.18mm x 0.18um





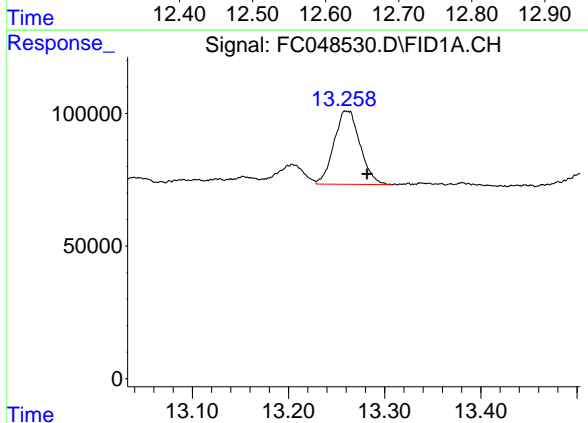
#9 ortho-Terphenyl (SURRE)

R.T.: 0.000 min
 Exp R.T. : 11.680 min
 Response: 0
 Conc: N.D.



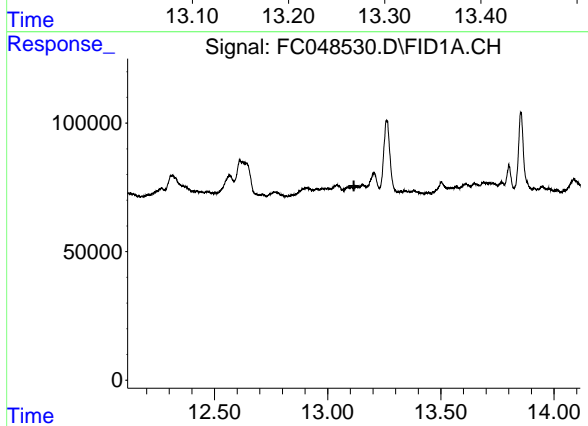
#10 n-Eicosane (C20)

R.T.: 12.611 min
 Delta R.T.: -0.058 min
 Response: 491158
 Conc: 3.80 ug/ml



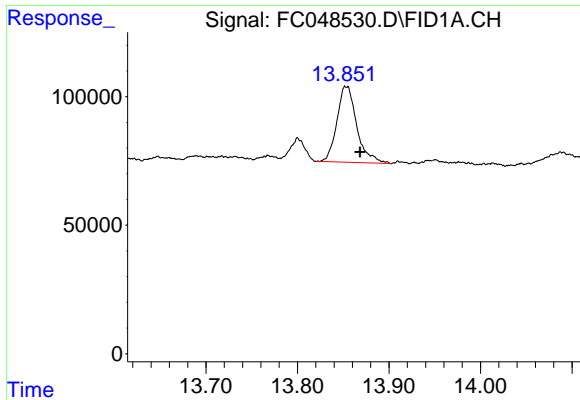
#11 n-Heneicosane (C21)

R.T.: 13.260 min
 Delta R.T.: -0.022 min
 Response: 519193
 Conc: 4.01 ug/ml



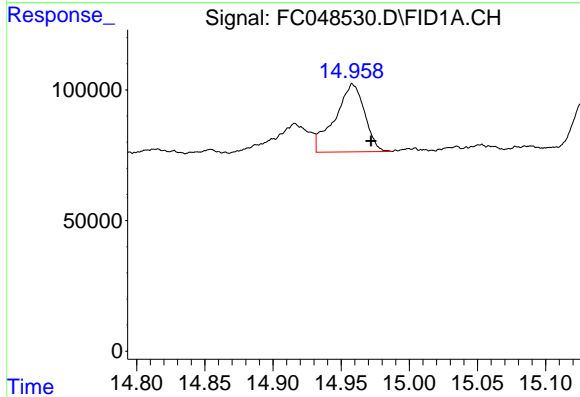
#12 1-chlorooctadecane (SURRE)

R.T.: 0.000 min
 Exp R.T. : 13.116 min
 Response: 0
 Conc: N.D.



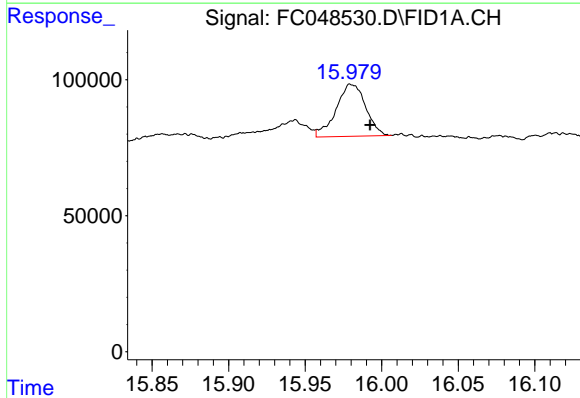
#13 n-Docosane (C22)

R.T.: 13.853 min
Delta R.T.: -0.015 min
Response: 445439
Conc: 3.43 ug/ml



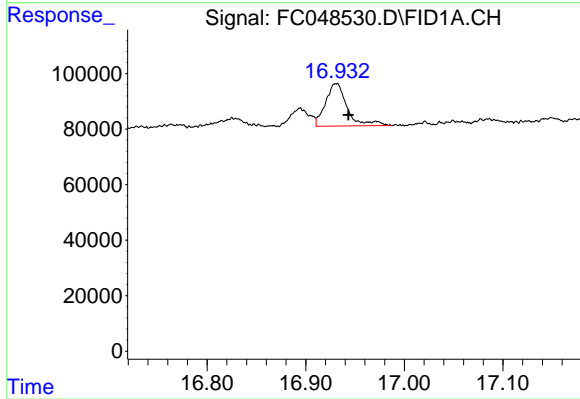
#14 n-Tetracosane (C24)

R.T.: 14.959 min
Delta R.T.: -0.013 min
Response: 392928
Conc: 3.00 ug/ml



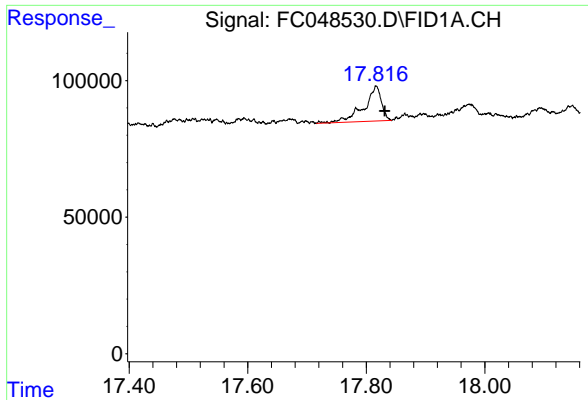
#15 n-Hexacosane (C26)

R.T.: 15.980 min
Delta R.T.: -0.012 min
Response: 257059
Conc: 1.98 ug/ml

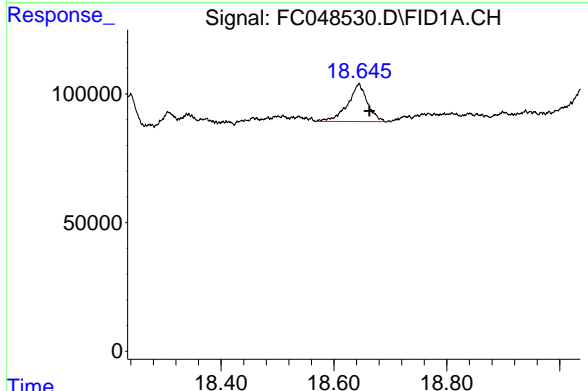


#16 n-Octacosane (C28)

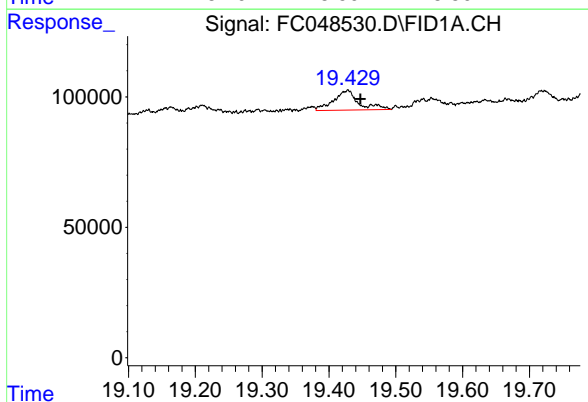
R.T.: 16.931 min
Delta R.T.: -0.012 min
Response: 233802
Conc: 1.79 ug/ml



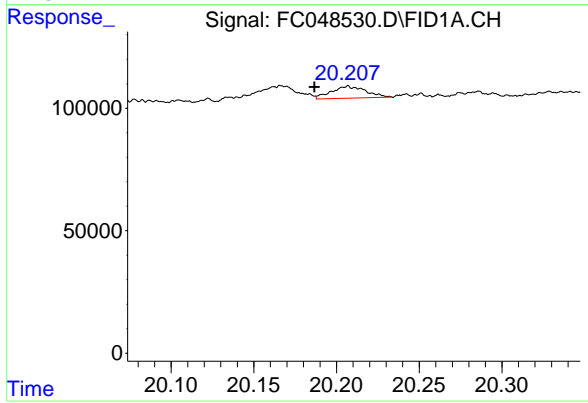
#17 n-Tricontane (C30)
R.T.: 17.817 min
Delta R.T.: -0.014 min
Response: 261242
Conc: 2.03 ug/ml



#18 n-Dotriacontane (C32)
R.T.: 18.645 min
Delta R.T.: -0.018 min
Response: 353064
Conc: 2.99 ug/ml



#19 n-Tetratriacontane (C34)
R.T.: 19.429 min
Delta R.T.: -0.018 min
Response: 194945
Conc: 1.75 ug/ml



#20 n-Hexatriacontane (C36)
R.T.: 20.207 min
Delta R.T.: 0.020 min
Response: 70574
Conc: 0.67 ug/ml