

Data Path : Z:\pestpcbsrv\HPCHEM1\FID_C\Data\FC072023AL\
 Data File : FC064187.D
 Signal(s) : FID1A.ch
 Acq On : 20 Jul 2023 17:48
 Operator : YP/AJ
 Sample : 03680-01
 Misc :
 ALS Vial : 20 Sample Multiplier: 1

Instrument :
 FID_C
 ClientSampleId :

Integration File: autoint1.e
 Quant Time: Jul 21 03:18:13 2023
 Quant Method : Z:\pestpcbsrv\HPCHEM1\FID_C\Method\Aliphatic EPH 062423.M
 Quant Title : GC Extractables
 QLast Update : Sun Jun 25 04:03:48 2023
 Response via : Initial Calibration
 Integrator: ChemStation

Volume Inj. : 1 ul
 Signal Phase : Rxi-1ms
 Signal Info : 20M x 0.18mm x 0.18um

Compound	R.T.	Response	Conc Units

System Monitoring Compounds			
9) S ortho-Terphenyl (SURR)	11.520	10284570	52.969 ug/ml
Spiked Amount	50.000	Recovery	= 105.94%
12) S 1-chlorooctadecane (S...	12.955	7404178	53.217 ug/ml
Spiked Amount	50.000	Recovery	= 106.43%
Target Compounds			
1) T n-Nonane (C9)	3.262	83199	0.466 ug/ml
6) T n-Tetradecane (C14)	8.135	247091	1.428 ug/ml

(f)=RT Delta > 1/2 Window

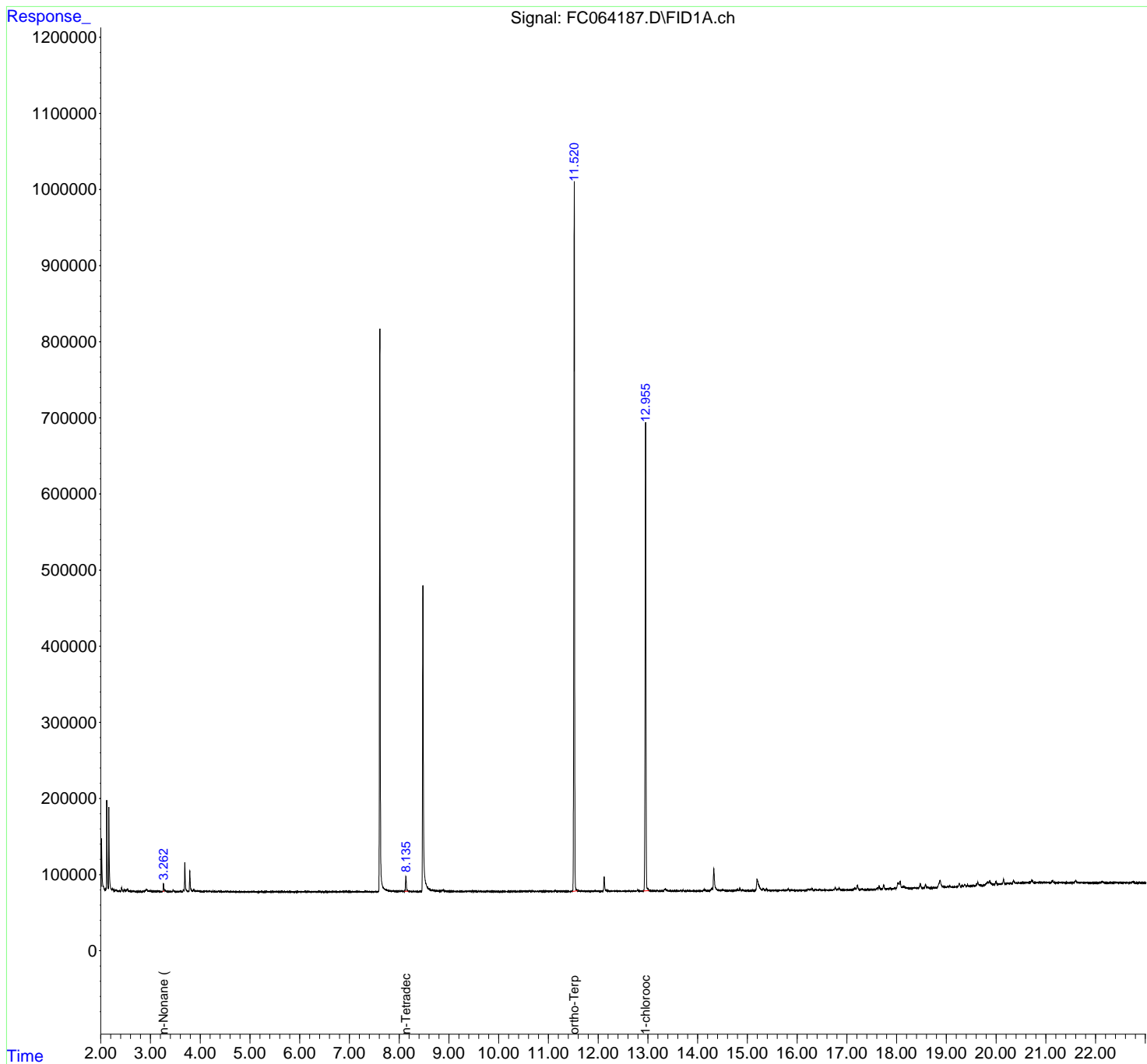
(m)=manual int.

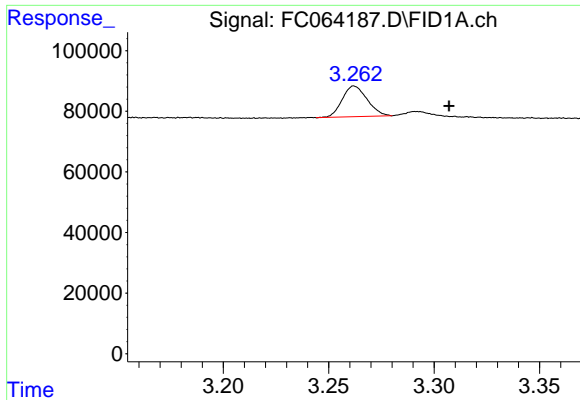
Data Path : Z:\pestpcbsrv\HPCHEM1\FID_C\Data\FC072023AL\
Data File : FC064187.D
Signal(s) : FID1A.ch
Acq On : 20 Jul 2023 17:48
Operator : YP/AJ
Sample : 03680-01
Misc :
ALS Vial : 20 Sample Multiplier: 1

Instrument :
FID_C
ClientSampleId :

Integration File: autoint1.e
Quant Time: Jul 21 03:18:13 2023
Quant Method : Z:\pestpcbsrv\HPCHEM1\FID_C\Method\Aliphatic EPH 062423.M
Quant Title : GC Extractables
QLast Update : Sun Jun 25 04:03:48 2023
Response via : Initial Calibration
Integrator: ChemStation

Volume Inj. : 1 ul
Signal Phase : Rxi-1ms
Signal Info : 20M x 0.18mm x 0.18um

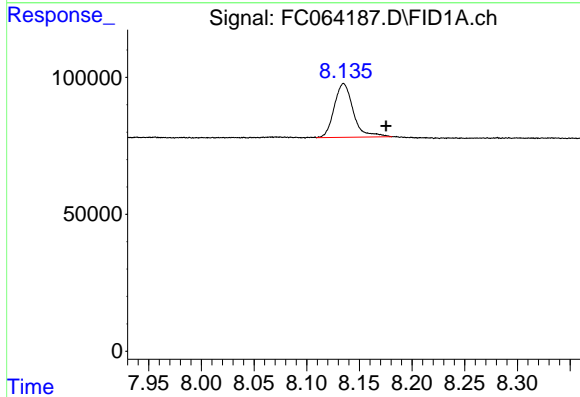




#1 n-Nonane (C9)

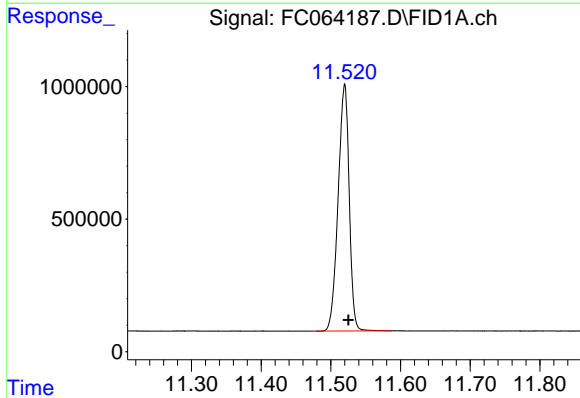
R.T.: 3.262 min
 Delta R.T.: -0.045 min
 Response: 83199
 Conc: 0.47 ug/ml

Instrument :
 FID_C
 ClientSampleId :



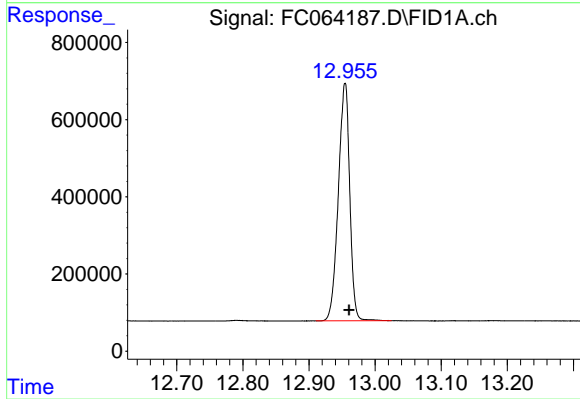
#6 n-Tetradecane (C14)

R.T.: 8.135 min
 Delta R.T.: -0.040 min
 Response: 247091
 Conc: 1.43 ug/ml



#9 ortho-Terphenyl (SURR)

R.T.: 11.520 min
 Delta R.T.: -0.005 min
 Response: 10284570
 Conc: 52.97 ug/ml



#12 1-chlorooctadecane (SURR)

R.T.: 12.955 min
 Delta R.T.: -0.006 min
 Response: 7404178
 Conc: 53.22 ug/ml