

Data Path : Z:\pestpcbsrv\HPCHEM1\FID\_C\Data\FC072420AL\  
 Data File : FC048665.D  
 Signal(s) : FID1A.CH  
 Acq On : 24 Jul 2020 20:20  
 Operator : DD\AJ  
 Sample : L3382-10  
 Misc :  
 ALS Vial : 15 Sample Multiplier: 1

Instrument :  
 FID\_C  
 ClientSampleId :  
 CTR-023

Integration File: autoint1.e  
 Quant Time: Jul 25 02:10:16 2020  
 Quant Method : Z:\pestpcbsrv\HPCHEM1\FID\_C\Method\Alaphatic EPH 070820.M  
 Quant Title : GC Extractables  
 QLast Update : Wed Jul 08 03:03:00 2020  
 Response via : Initial Calibration  
 Integrator: ChemStation 6890 Scale Mode: Large solvent peaks clipped

Volume Inj. : 1 ul  
 Signal Phase : Rxi-1ms  
 Signal Info : 20M x 0.18mm x 0.18um

Compound	R.T.	Response	Conc Units
System Monitoring Compounds			
9) S ortho-Terphenyl (SURR)	11.679	4085888	29.770 ug/ml
Spiked Amount	50.000	Recovery	= 59.54%
12) S 1-chlorooctadecane (S...	13.112	3317526	29.440 ug/ml
Spiked Amount	50.000	Recovery	= 58.88%

Target Compounds

(f)=RT Delta > 1/2 Window

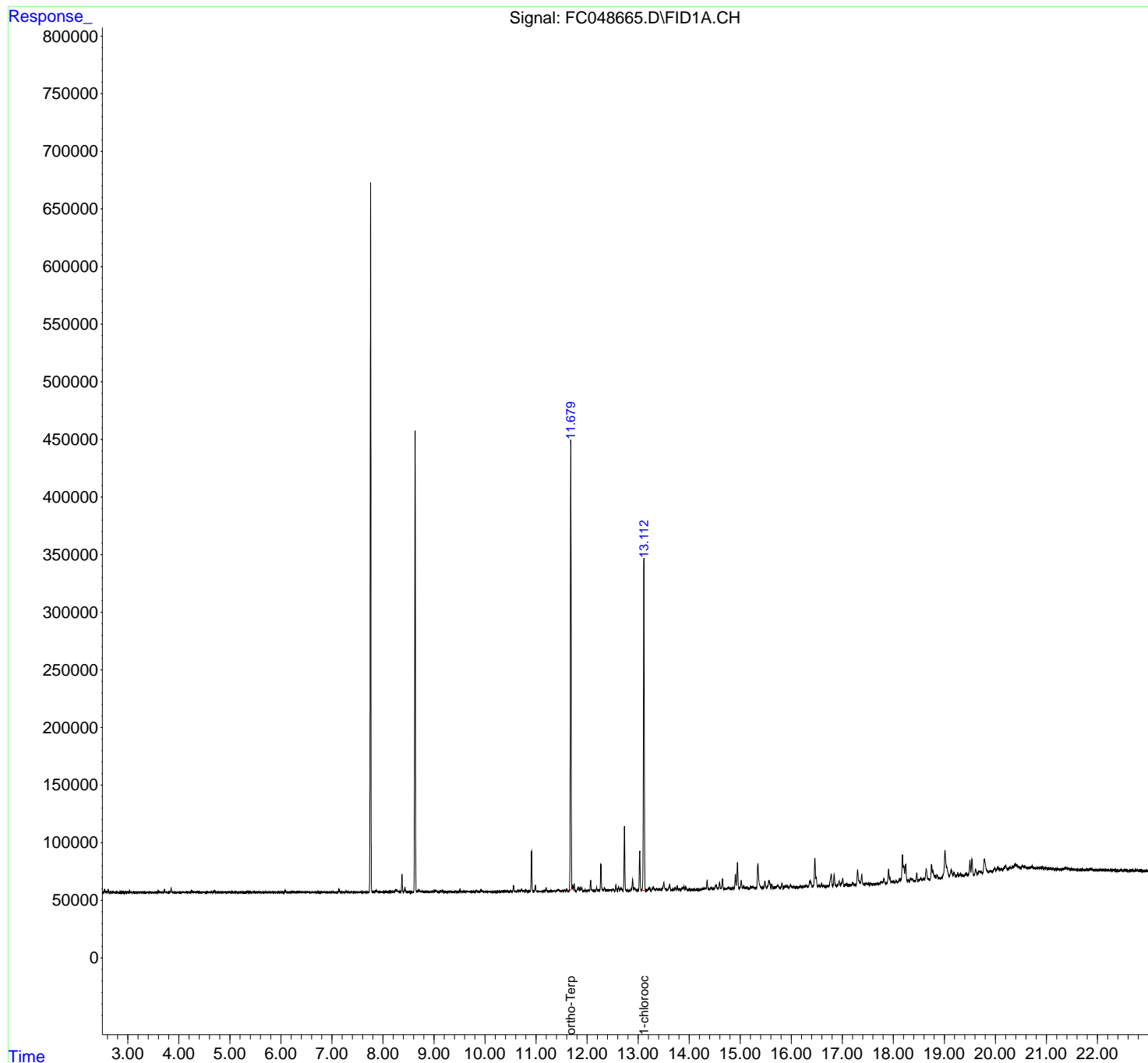
(m)=manual int.

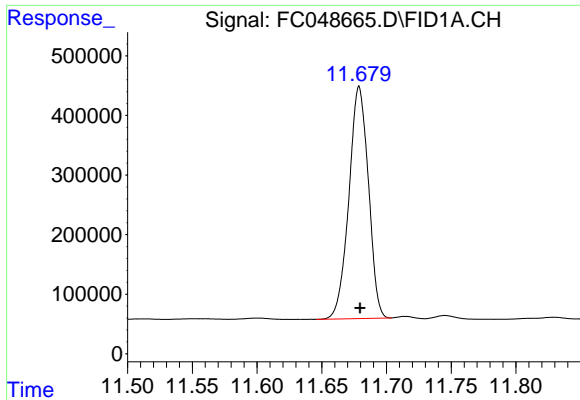
Data Path : Z:\pestpcbsrv\HPCHEM1\FID\_C\Data\FC072420AL\  
Data File : FC048665.D  
Signal(s) : FID1A.CH  
Acq On : 24 Jul 2020 20:20  
Operator : DD\AJ  
Sample : L3382-10  
Misc :  
ALS Vial : 15 Sample Multiplier: 1

Instrument :  
FID\_C  
ClientSampled :  
CTR-023

Integration File: autoint1.e  
Quant Time: Jul 25 02:10:16 2020  
Quant Method : Z:\pestpcbsrv\HPCHEM1\FID\_C\Method\Alaphatic EPH 070820.M  
Quant Title : GC Extractables  
QLast Update : Wed Jul 08 03:03:00 2020  
Response via : Initial Calibration  
Integrator: ChemStation 6890 Scale Mode: Large solvent peaks clipped

Volume Inj. : 1 ul  
Signal Phase : Rxi-1ms  
Signal Info : 20M x 0.18mm x 0.18um

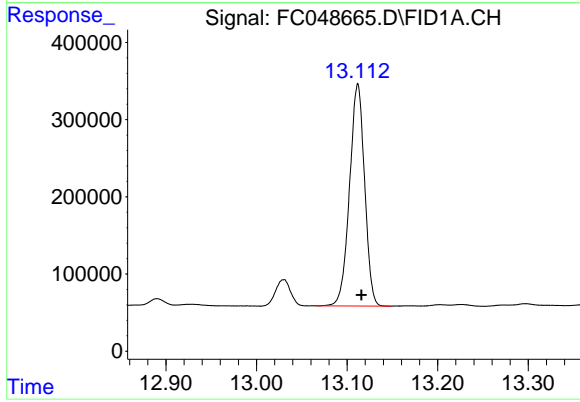




#9 ortho-Terphenyl (SURR)

R.T.: 11.679 min  
Delta R.T.: 0.000 min  
Response: 4085888  
Conc: 29.77 ug/ml

Instrument :  
FID\_C  
ClientSampleId :  
CTR-023



#12 1-chlorooctadecane (SURR)

R.T.: 13.112 min  
Delta R.T.: -0.004 min  
Response: 3317526  
Conc: 29.44 ug/ml