

Data Path : Z:\pestpcbsrv\HPCHEM1\FID_C\Data\FC072519AL\
Data File : FC042580.D
Signal(s) : FID1A.CH
Acq On : 26 Jul 2019 8:35
Operator : DD\AJ
Sample : I.BLK
Misc :
ALS Vial : 1 Sample Multiplier: 1

Integration File: sample.E
Quant Time: Jul 26 09:01:48 2019
Quant Method : Z:\pestpcbsrv\HPCHEM1\FID_C\Method\Alaphatic EPH 070919.M
Quant Title : GC Extractables
QLast Update : Wed Jul 10 08:56:11 2019
Response via : Initial Calibration
Integrator: ChemStation 6890 Scale Mode: Large solvent peaks clipped

Volume Inj. : 1 ul
Signal Phase : Rxi-1ms
Signal Info : 20M x 0.18mm x 0.18um

Compound	R.T.	Response	Conc Units
----------	------	----------	------------

System Monitoring Compounds

Target Compounds

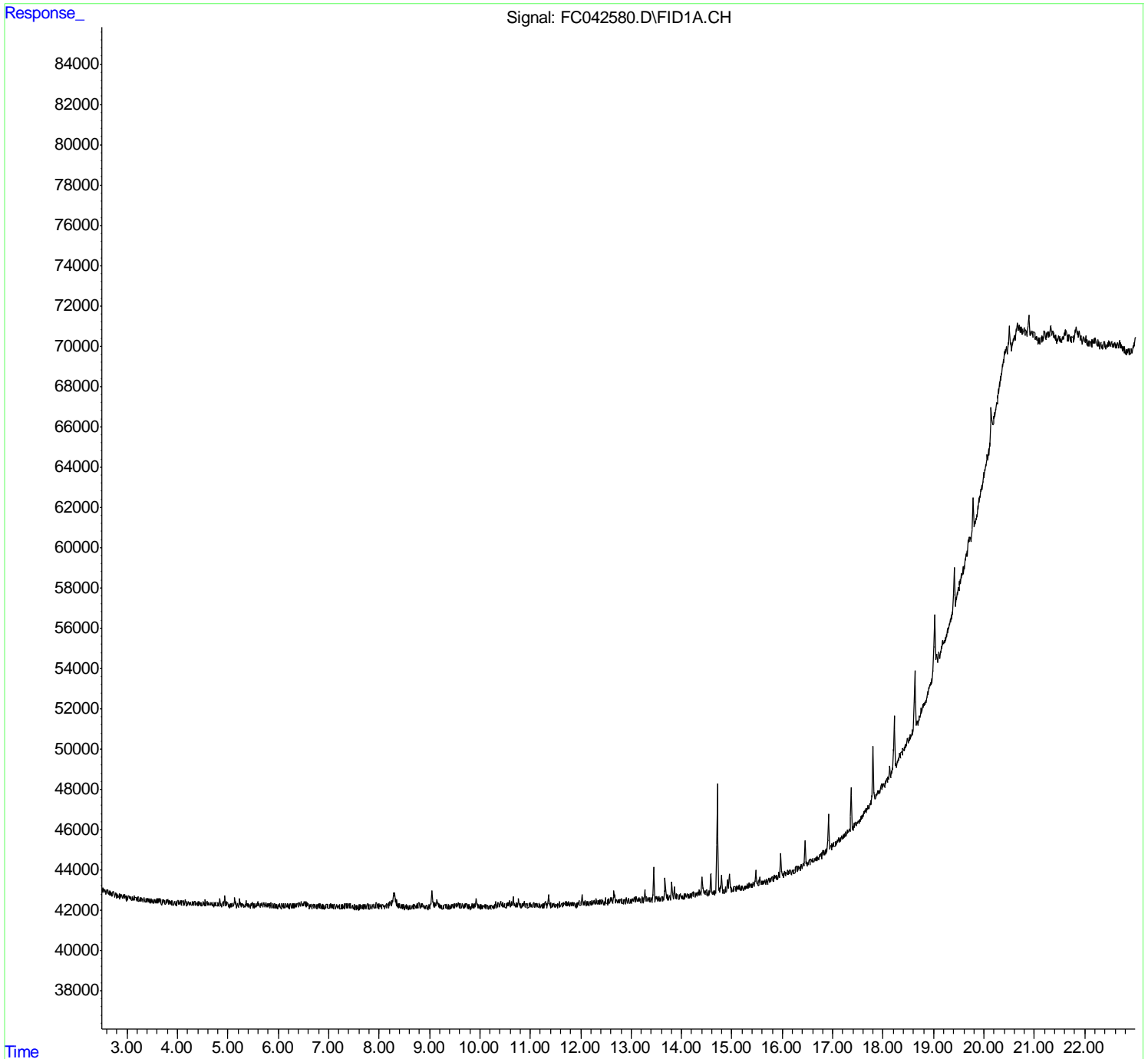
(f)=RT Delta > 1/2 Window

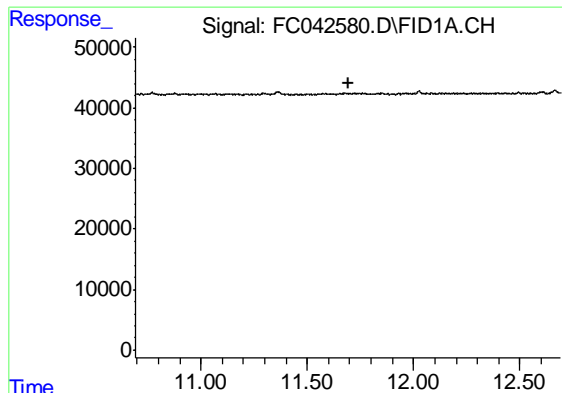
(m)=manual int.

Data Path : Z:\pestpcbsrv\HPCHEM1\FID_C\Data\FC072519AL\
 Data File : FC042580.D
 Signal(s) : FID1A.CH
 Acq On : 26 Jul 2019 8:35
 Operator : DD\AJ
 Sample : I.BLK
 Misc :
 ALS Vial : 1 Sample Multiplier: 1

Integration File: sample.E
 Quant Time: Jul 26 09:01:48 2019
 Quant Method : Z:\pestpcbsrv\HPCHEM1\FID_C\Method\Alaphatic EPH 070919.M
 Quant Title : GC Extractables
 QLast Update : Wed Jul 10 08:56:11 2019
 Response via : Initial Calibration
 Integrator: ChemStation 6890 Scale Mode: Large solvent peaks clipped

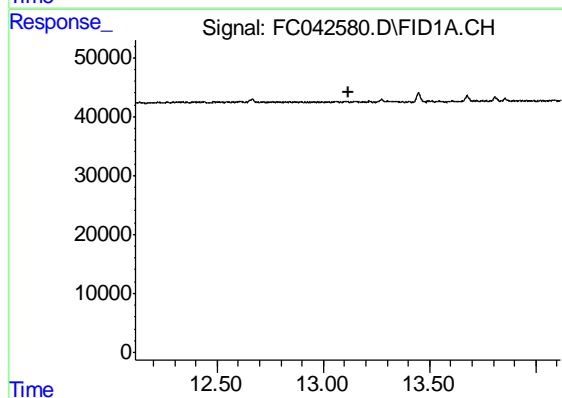
Volume Inj. : 1 ul
 Signal Phase : Rxi-1ms
 Signal Info : 20M x 0.18mm x 0.18um





#9 ortho-Terphenyl (SURR)

R.T.: 0.000 min
Exp R.T. : 11.691 min
Response: 0
Conc: N.D.



#12 1-chlorooctadecane (SURR)

R.T.: 0.000 min
Exp R.T. : 13.116 min
Response: 0
Conc: N.D.