

Data Path : Z:\pestpcbsrv\HPCHEM1\FID_C\Data\FC072820AL\
 Data File : FC048713.D
 Signal(s) : FID1A.CH
 Acq On : 29 Jul 2020 9:37
 Operator : DD\AJ
 Sample : L3435-05
 Misc :
 ALS Vial : 38 Sample Multiplier: 1

Integration File: autoint1.e
 Quant Time: Jul 29 11:35:08 2020
 Quant Method : Z:\pestpcbsrv\HPCHEM1\FID_C\Method\Alaphatic EPH 070820.M
 Quant Title : GC Extractables
 QLast Update : Wed Jul 08 03:03:00 2020
 Response via : Initial Calibration
 Integrator: ChemStation 6890 Scale Mode: Large solvent peaks clipped

Volume Inj. : 1 ul
 Signal Phase : Rxi-1ms
 Signal Info : 20M x 0.18mm x 0.18um

Compound	R.T.	Response	Conc Units

System Monitoring Compounds			
9) S ortho-Terphenyl (SURR)	11.682	6106534	44.492 ug/ml
Spiked Amount	50.000	Recovery	= 88.98%
12) S 1-chlorooctadecane (S...	13.116	4859430	43.123 ug/ml
Spiked Amount	50.000	Recovery	= 86.25%

Target Compounds

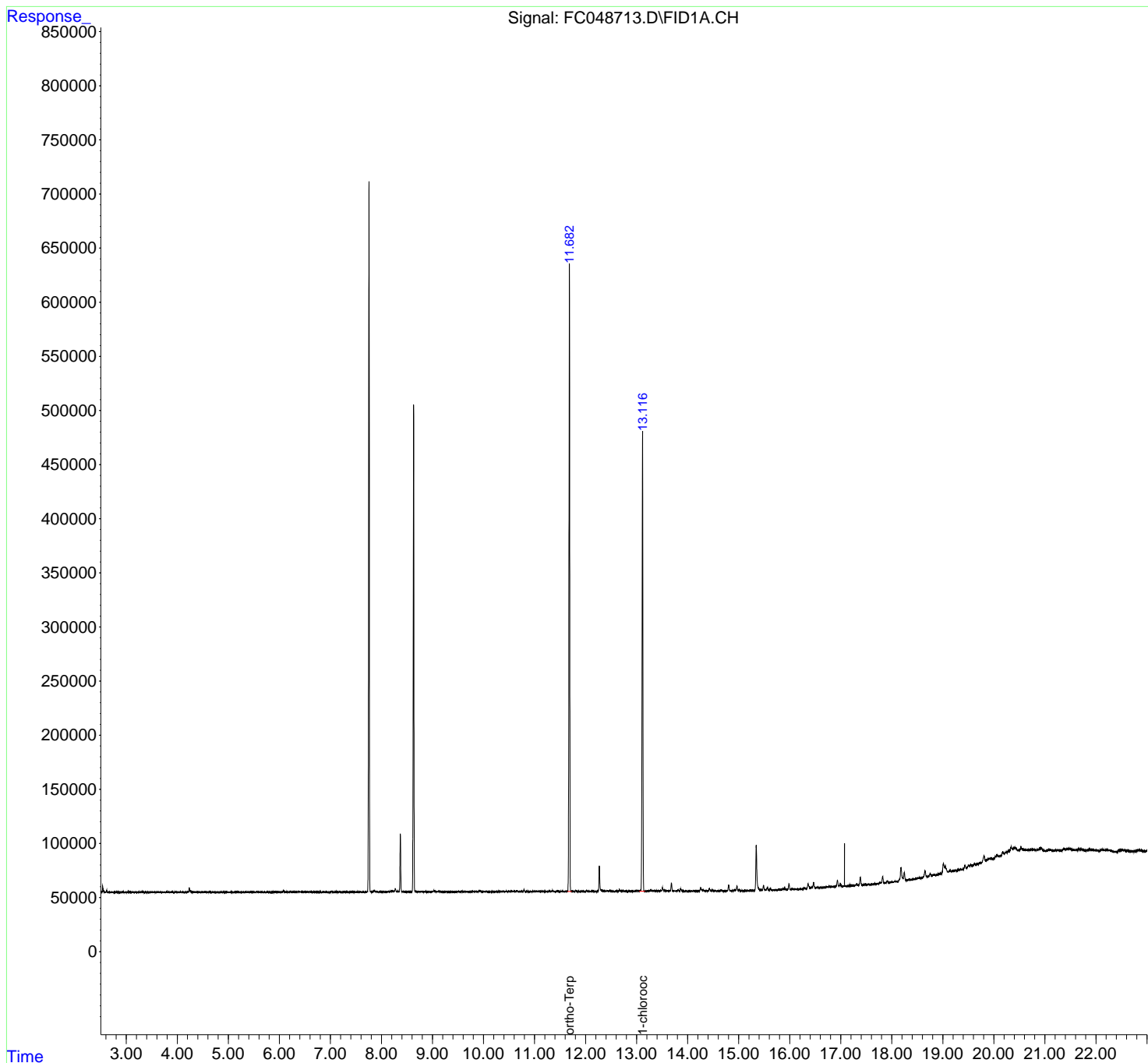
(f)=RT Delta > 1/2 Window

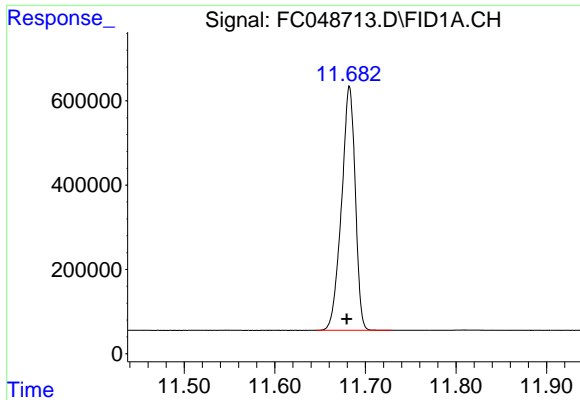
(m)=manual int.

Data Path : Z:\pestpcbsrv\HPCHEM1\FID_C\Data\FC072820AL\
Data File : FC048713.D
Signal(s) : FID1A.CH
Acq On : 29 Jul 2020 9:37
Operator : DD\AJ
Sample : L3435-05
Misc :
ALS Vial : 38 Sample Multiplier: 1

Integration File: autoint1.e
Quant Time: Jul 29 11:35:08 2020
Quant Method : Z:\pestpcbsrv\HPCHEM1\FID_C\Method\Alaphatic EPH 070820.M
Quant Title : GC Extractables
QLast Update : Wed Jul 08 03:03:00 2020
Response via : Initial Calibration
Integrator: ChemStation 6890 Scale Mode: Large solvent peaks clipped

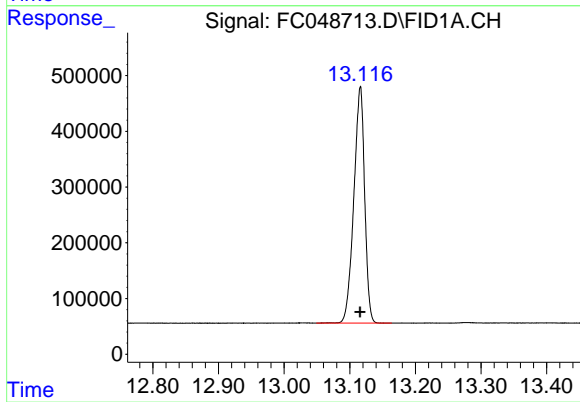
Volume Inj. : 1 ul
Signal Phase : Rxi-1ms
Signal Info : 20M x 0.18mm x 0.18um





#9 ortho-Terphenyl (SURR)

R.T.: 11.682 min
Delta R.T.: 0.003 min
Response: 6106534
Conc: 44.49 ug/ml



#12 1-chlorooctadecane (SURR)

R.T.: 13.116 min
Delta R.T.: 0.000 min
Response: 4859430
Conc: 43.12 ug/ml