

Data Path : Z:\pestpcbsrv\HPCHEM1\FID\_C\Data\FC072822AL\  
 Data File : FC060875.D  
 Signal(s) : FID1A.ch  
 Acq On : 28 Jul 2022 12:58  
 Operator : YP/AJ  
 Sample : N3918-01DL 5X  
 Misc :  
 ALS Vial : 5 Sample Multiplier: 1

Instrument :  
 FID\_C  
 ClientSampleId :

Integration File: autoint1.e  
 Quant Time: Jul 28 22:49:53 2022  
 Quant Method : Z:\pestpcbsrv\HPCHEM1\FID\_C\Method\Aliphatic EPH 072522.M  
 Quant Title : GC Extractables  
 QLast Update : Mon Jul 25 19:40:54 2022  
 Response via : Initial Calibration  
 Integrator: ChemStation

Volume Inj. : 1 ul  
 Signal Phase : Rxi-1ms  
 Signal Info : 20M x 0.18mm x 0.18um

Compound	R.T.	Response	Conc Units
-----			
System Monitoring Compounds			
9) S ortho-Terphenyl (SURR)	10.639	1555164	9.476 ug/ml
Spiked Amount	50.000	Recovery	= 18.95%
12) S 1-chlorooctadecane (S...	11.996	1412828	10.642 ug/ml
Spiked Amount	50.000	Recovery	= 21.28%
Target Compounds			
3) T A~Naphthalene (C11.7)	5.198	165261	1.163 ug/ml
6) T n-Tetradecane (C14)	7.261f	312623	2.082 ug/ml
7) T n-Hexadecane (C16)	8.830	136351	0.891 ug/ml
8) T n-Octadecane (C18)	10.282	390623	2.502 ug/ml
10) T n-Eicosane (C20)	11.560	392302	2.500 ug/ml
11) T n-Heneicosane (C21)	12.129	320170	2.046 ug/ml
13) T n-Docosane (C22)	12.783f	1064259	6.826 ug/ml
14) T n-Tetracosane (C24)	13.787	4077603	26.709 ug/ml
15) T n-Hexacosane (C26)	14.785	237114	1.588 ug/ml
16) T n-Octacosane (C28)	15.708	3496945	24.404 ug/ml
18) T n-Dotriacontane (C32)	17.410	181463	1.345 ug/ml
19) T n-Tetratriacontane (C34)	18.180	75246	0.600 ug/ml
20) T n-Hexatriacontane (C36)	18.878	754526	6.173 ug/ml
21) T n-Octatriacontane (C38)	19.582	299632	2.539 ug/ml
22) T n-Tetracontane (C40)	20.220	419725	3.647 ug/ml
-----			

(f)=RT Delta > 1/2 Window

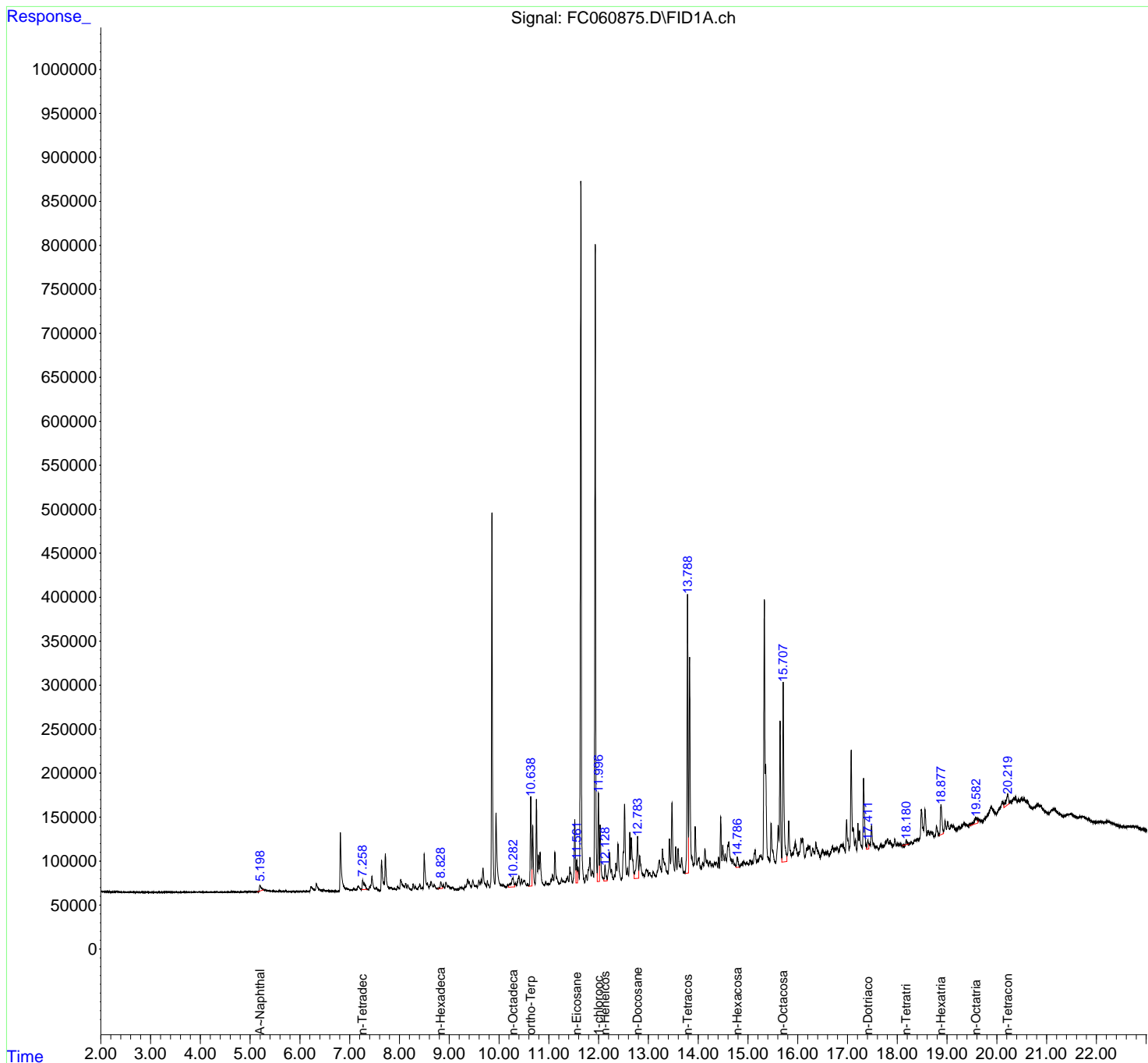
(m)=manual int.

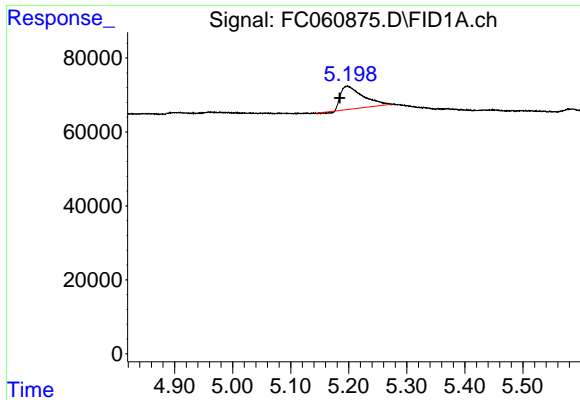
Data Path : Z:\pestpcbsrv\HPCHEM1\FID\_C\Data\FC072822AL\  
 Data File : FC060875.D  
 Signal(s) : FID1A.ch  
 Acq On : 28 Jul 2022 12:58  
 Operator : YP/AJ  
 Sample : N3918-01DL 5X  
 Misc :  
 ALS Vial : 5 Sample Multiplier: 1

Instrument :  
 FID\_C  
 ClientSampleId :

Integration File: autoint1.e  
 Quant Time: Jul 28 22:49:53 2022  
 Quant Method : Z:\pestpcbsrv\HPCHEM1\FID\_C\Method\Aliphatic EPH 072522.M  
 Quant Title : GC Extractables  
 QLast Update : Mon Jul 25 19:40:54 2022  
 Response via : Initial Calibration  
 Integrator: ChemStation

Volume Inj. : 1 ul  
 Signal Phase : Rxi-1ms  
 Signal Info : 20M x 0.18mm x 0.18um

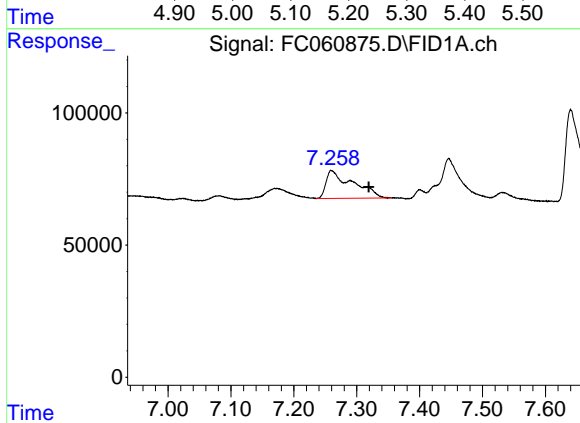




#3 A~Naphthalene (C11.7)

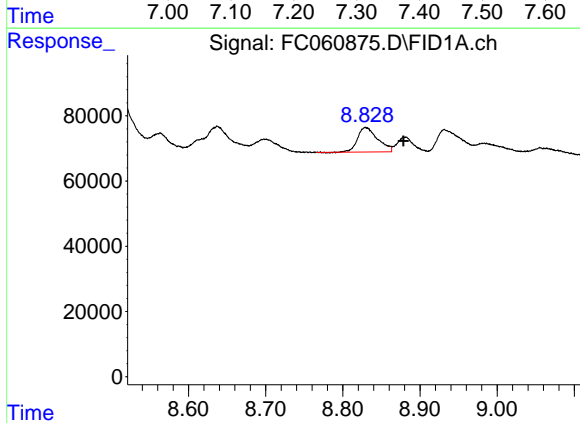
R.T.: 5.198 min  
 Delta R.T.: 0.013 min  
 Response: 165261  
 Conc: 1.16 ug/ml

Instrument :  
 FID\_C  
 ClientSampleId :



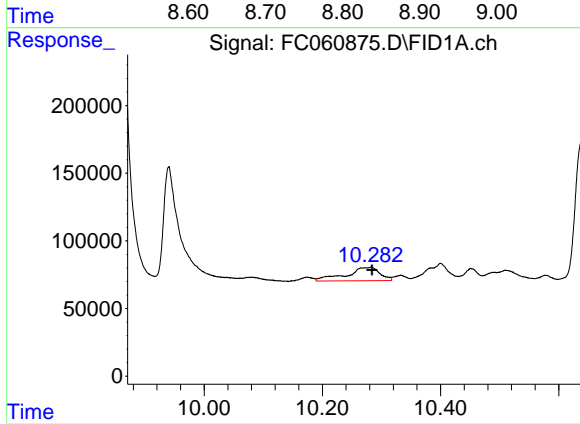
#6 n-Tetradecane (C14)

R.T.: 7.261 min  
 Delta R.T.: -0.058 min  
 Response: 312623  
 Conc: 2.08 ug/ml



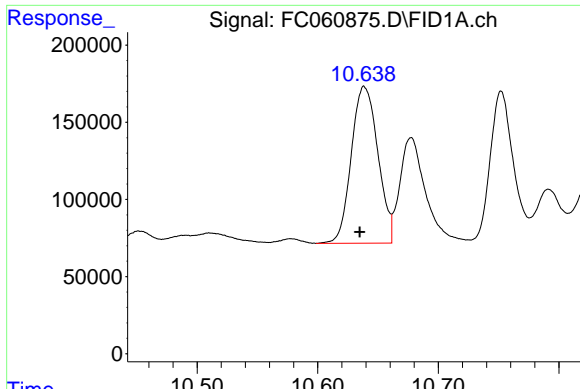
#7 n-Hexadecane (C16)

R.T.: 8.830 min  
 Delta R.T.: -0.049 min  
 Response: 136351  
 Conc: 0.89 ug/ml



#8 n-Octadecane (C18)

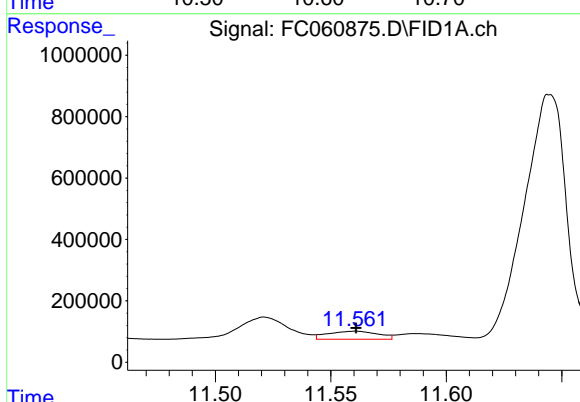
R.T.: 10.282 min  
 Delta R.T.: -0.002 min  
 Response: 390623  
 Conc: 2.50 ug/ml



#9 ortho-Terphenyl (SURR)

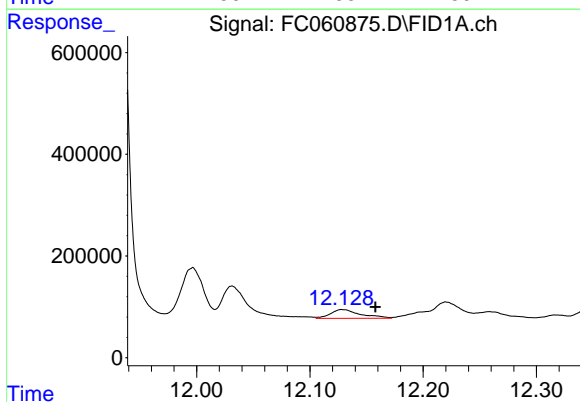
R.T.: 10.639 min  
 Delta R.T.: 0.004 min  
 Response: 1555164  
 Conc: 9.48 ug/ml

Instrument :  
 FID\_C  
 ClientSampleId :



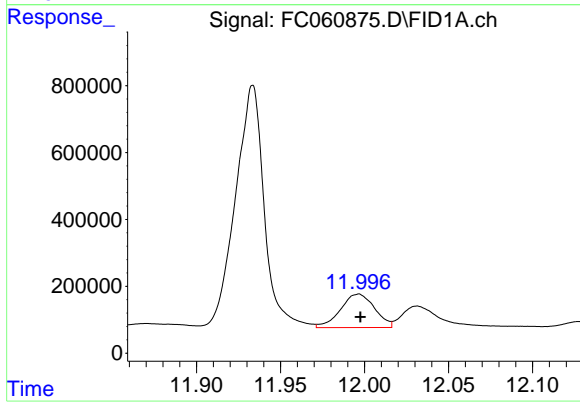
#10 n-Eicosane (C20)

R.T.: 11.560 min  
 Delta R.T.: 0.000 min  
 Response: 392302  
 Conc: 2.50 ug/ml



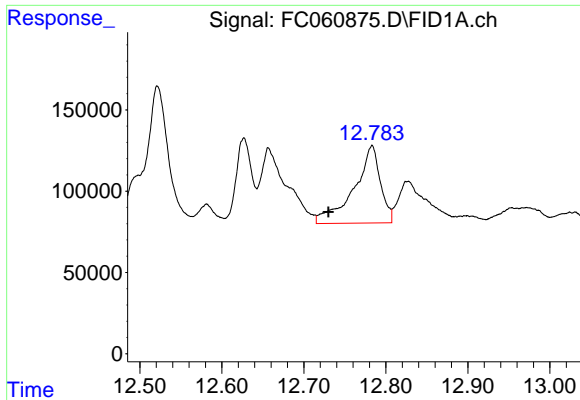
#11 n-Heneicosane (C21)

R.T.: 12.129 min  
 Delta R.T.: -0.029 min  
 Response: 320170  
 Conc: 2.05 ug/ml



#12 1-chlorooctadecane (SURR)

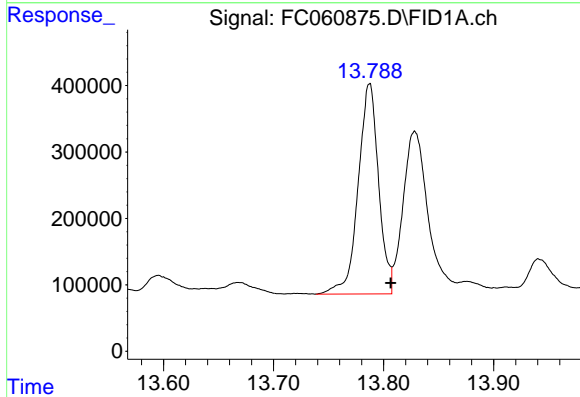
R.T.: 11.996 min  
 Delta R.T.: -0.001 min  
 Response: 1412828  
 Conc: 10.64 ug/ml



#13 n-Docosane (C22)

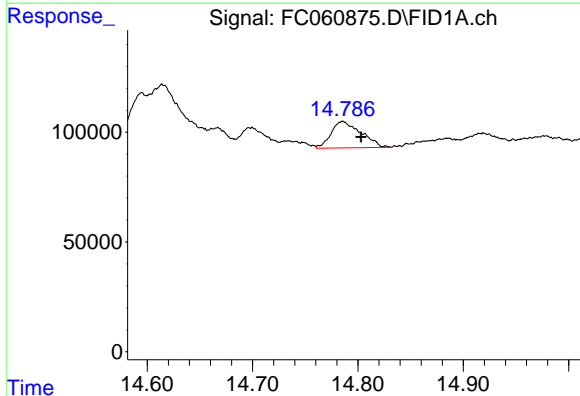
R.T.: 12.783 min  
 Delta R.T.: 0.053 min  
 Response: 1064259  
 Conc: 6.83 ug/ml

Instrument :  
 FID\_C  
 ClientSampleId :



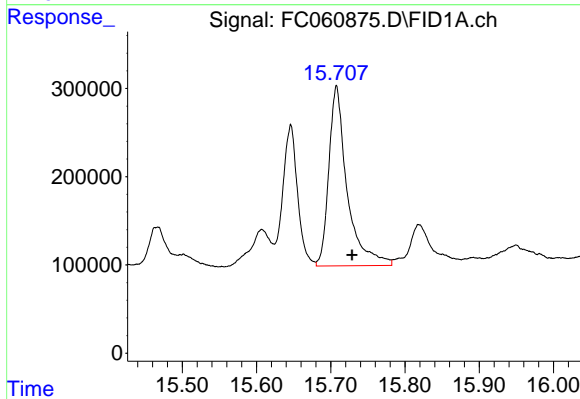
#14 n-Tetracosane (C24)

R.T.: 13.787 min  
 Delta R.T.: -0.019 min  
 Response: 4077603  
 Conc: 26.71 ug/ml



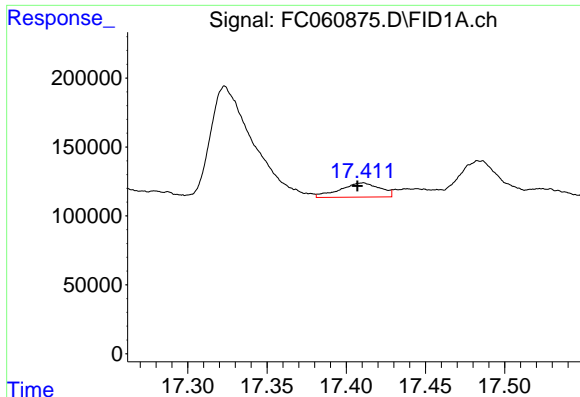
#15 n-Hexacosane (C26)

R.T.: 14.785 min  
 Delta R.T.: -0.018 min  
 Response: 237114  
 Conc: 1.59 ug/ml



#16 n-Octacosane (C28)

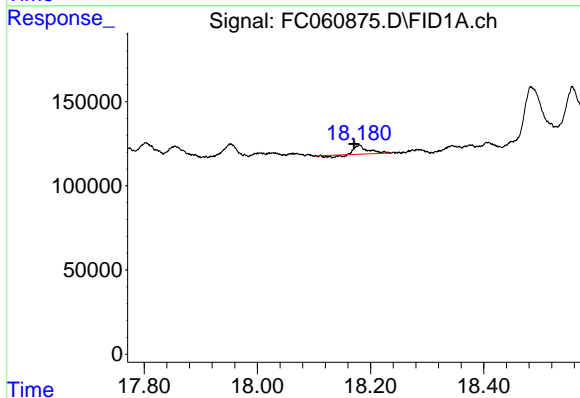
R.T.: 15.708 min  
 Delta R.T.: -0.021 min  
 Response: 3496945  
 Conc: 24.40 ug/ml



#18 n-Dotriacontane (C32)

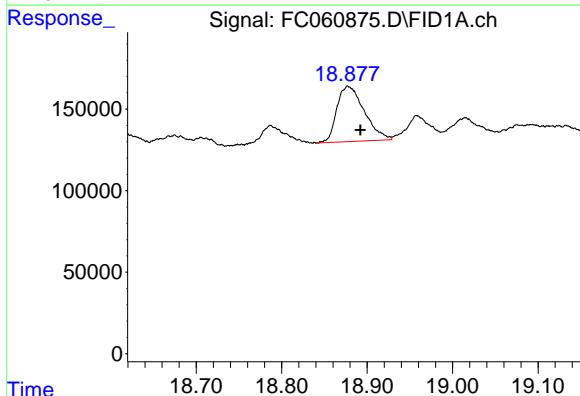
R.T.: 17.410 min  
Delta R.T.: 0.003 min  
Response: 181463  
Conc: 1.34 ug/ml

Instrument :  
FID\_C  
ClientSampleId :



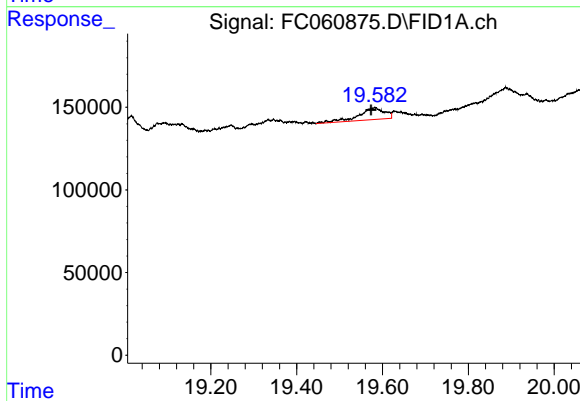
#19 n-Tetraatriacontane (C34)

R.T.: 18.180 min  
Delta R.T.: 0.009 min  
Response: 75246  
Conc: 0.60 ug/ml



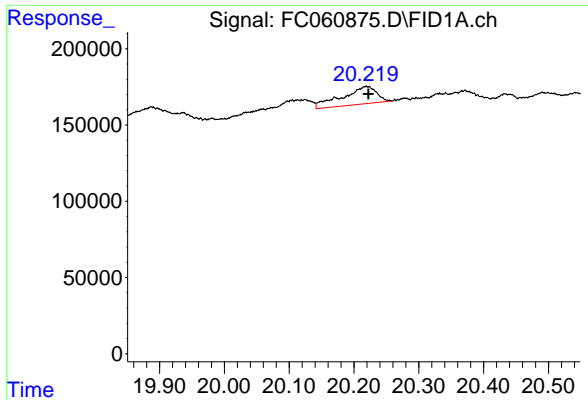
#20 n-Hexatriacontane (C36)

R.T.: 18.878 min  
Delta R.T.: -0.014 min  
Response: 754526  
Conc: 6.17 ug/ml



#21 n-Octatriacontane (C38)

R.T.: 19.582 min  
Delta R.T.: 0.008 min  
Response: 299632  
Conc: 2.54 ug/ml



#22 n-Tetracontane (C40)

R.T.: 20.220 min  
Delta R.T.: -0.002 min  
Response: 419725  
Conc: 3.65 ug/ml

Instrument :  
FID\_C  
ClientSampleId :