

Data Path : Z:\pestpcbsrv\HPCHEM1\FID\_C\Data\FC072922AL\  
 Data File : FC060895.D  
 Signal(s) : FID1A.ch  
 Acq On : 29 Jul 2022 11:39  
 Operator : YP/AJ  
 Sample : N3925-02RE  
 Misc :  
 ALS Vial : 4 Sample Multiplier: 1

Instrument :  
 FID\_C  
 ClientSampleId :

Integration File: autoint1.e  
 Quant Time: Jul 29 23:00:24 2022  
 Quant Method : Z:\pestpcbsrv\HPCHEM1\FID\_C\Method\Aliphatic EPH 072522.M  
 Quant Title : GC Extractables  
 QLast Update : Mon Jul 25 19:40:54 2022  
 Response via : Initial Calibration  
 Integrator: ChemStation

Volume Inj. : 1 ul  
 Signal Phase : Rxi-1ms  
 Signal Info : 20M x 0.18mm x 0.18um

Compound	R.T.	Response	Conc Units
-----			
System Monitoring Compounds			
9) S ortho-Terphenyl (SURR)	10.634	5754339	35.064 ug/ml
Spiked Amount	50.000	Recovery	= 70.13%
12) S 1-chlorooctadecane (S...	12.031	37398247	281.709 ug/ml
Spiked Amount	50.000	Recovery	= 563.42%
Target Compounds			
14) T n-Tetracosane (C24)	13.849	455584	2.984 ug/ml
16) T n-Octacosane (C28)	15.746	212078	1.480 ug/ml
17) T n-Tricontane (C30)	16.599	342621	2.447 ug/ml
18) T n-Dotriacontane (C32)	17.409	281670	2.087 ug/ml
19) T n-Tetratriacontane (C34)	18.177	244673	1.951 ug/ml
20) T n-Hexatriacontane (C36)	18.898	67941	0.556 ug/ml
21) T n-Octatriacontane (C38)	19.579	217890	1.846 ug/ml
22) T n-Tetracontane (C40)	20.227	93420	0.812 ug/ml
-----			

(f)=RT Delta > 1/2 Window

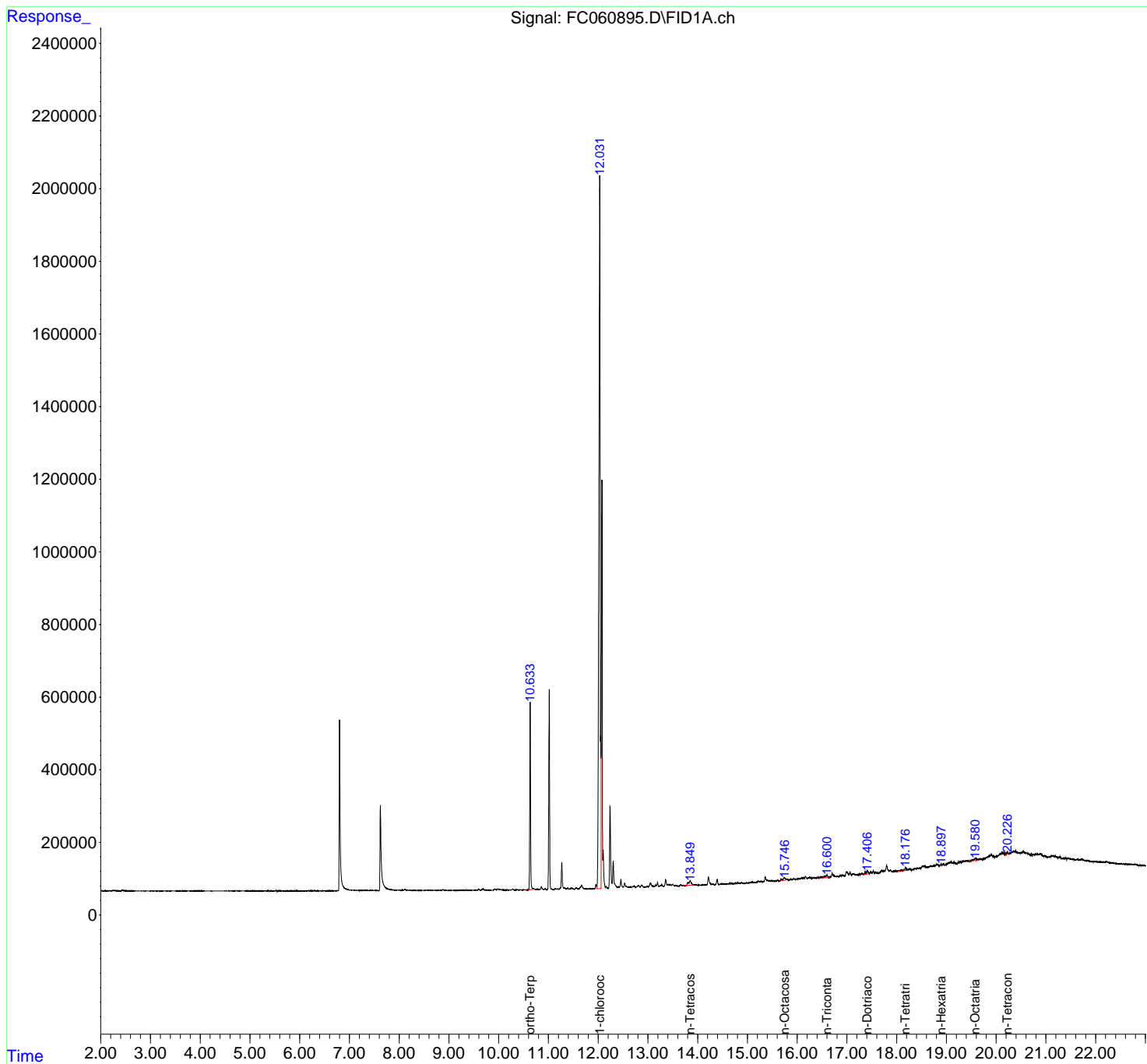
(m)=manual int.

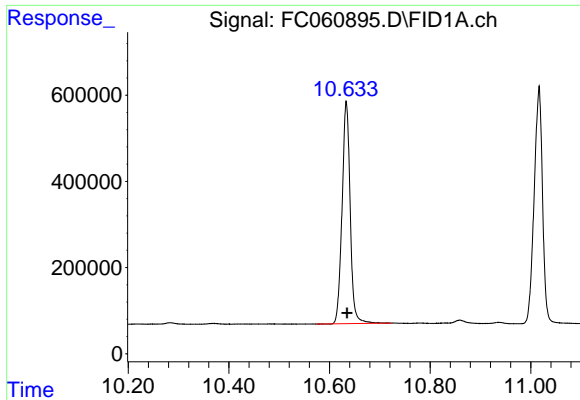
Data Path : Z:\pestpcbsrv\HPCHEM1\FID\_C\Data\FC072922AL\  
 Data File : FC060895.D  
 Signal(s) : FID1A.ch  
 Acq On : 29 Jul 2022 11:39  
 Operator : YP/AJ  
 Sample : N3925-02RE  
 Misc :  
 ALS Vial : 4 Sample Multiplier: 1

Instrument :  
 FID\_C  
 ClientSampleId :

Integration File: autoint1.e  
 Quant Time: Jul 29 23:00:24 2022  
 Quant Method : Z:\pestpcbsrv\HPCHEM1\FID\_C\Method\Aliphatic EPH 072522.M  
 Quant Title : GC Extractables  
 QLast Update : Mon Jul 25 19:40:54 2022  
 Response via : Initial Calibration  
 Integrator: ChemStation

Volume Inj. : 1 ul  
 Signal Phase : Rxi-1ms  
 Signal Info : 20M x 0.18mm x 0.18um

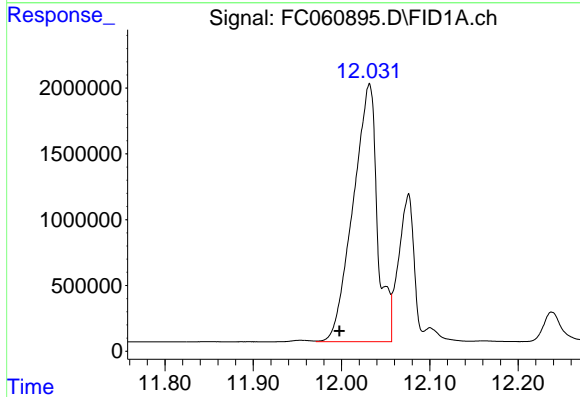




#9 ortho-Terphenyl (SURRE)

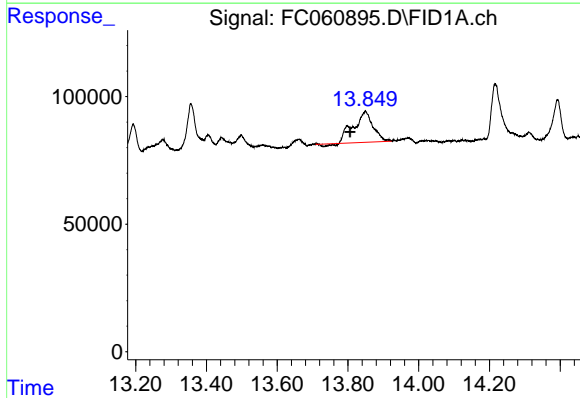
R.T.: 10.634 min  
 Delta R.T.: -0.001 min  
 Response: 5754339  
 Conc: 35.06 ug/ml

Instrument :  
 FID\_C  
 ClientSampleId :



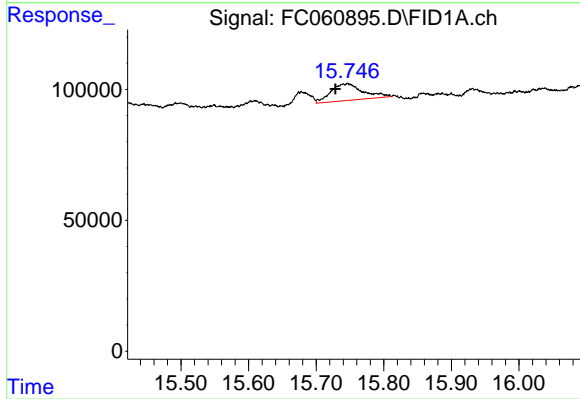
#12 1-chlorooctadecane (SURRE)

R.T.: 12.031 min  
 Delta R.T.: 0.034 min  
 Response: 37398247  
 Conc: 281.71 ug/ml



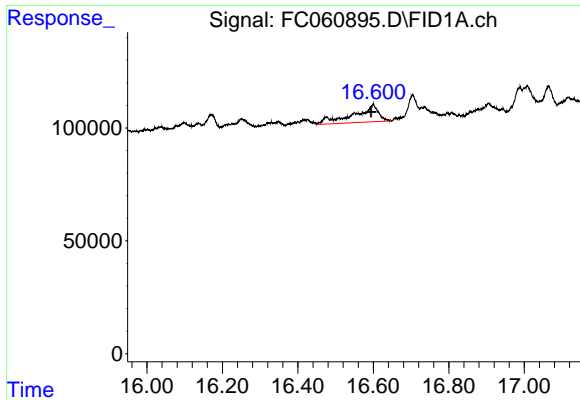
#14 n-Tetracosane (C24)

R.T.: 13.849 min  
 Delta R.T.: 0.043 min  
 Response: 455584  
 Conc: 2.98 ug/ml



#16 n-Octacosane (C28)

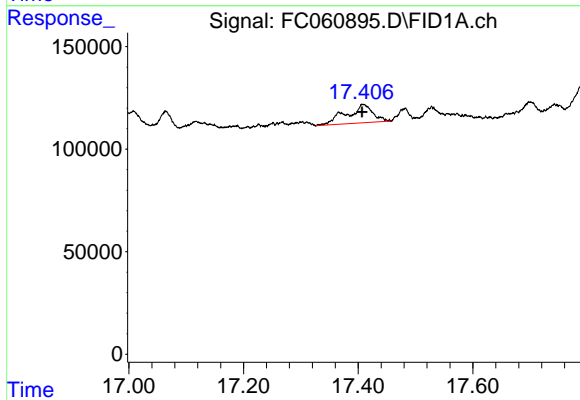
R.T.: 15.746 min  
 Delta R.T.: 0.018 min  
 Response: 212078  
 Conc: 1.48 ug/ml



#17 n-Tricontane (C30)

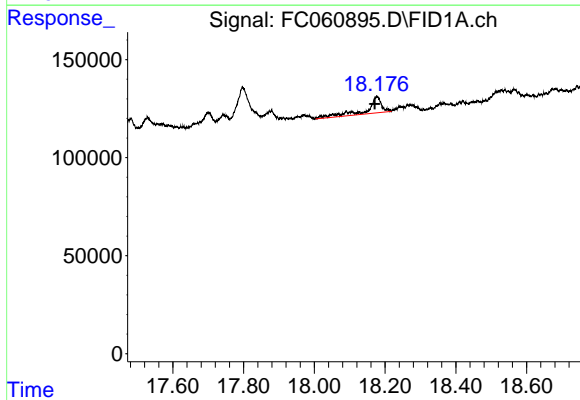
R.T.: 16.599 min  
Delta R.T.: 0.005 min  
Response: 342621  
Conc: 2.45 ug/ml

Instrument :  
FID\_C  
ClientSampleId :



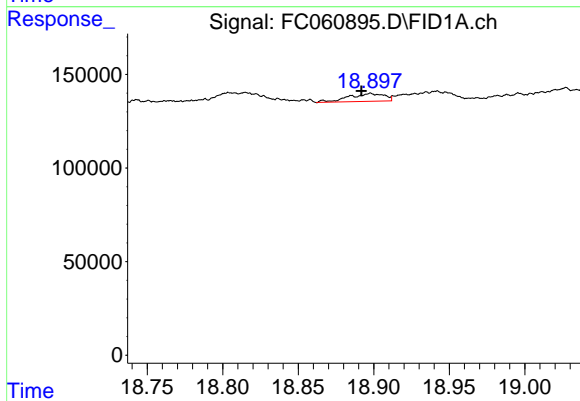
#18 n-Dotriacontane (C32)

R.T.: 17.409 min  
Delta R.T.: 0.002 min  
Response: 281670  
Conc: 2.09 ug/ml



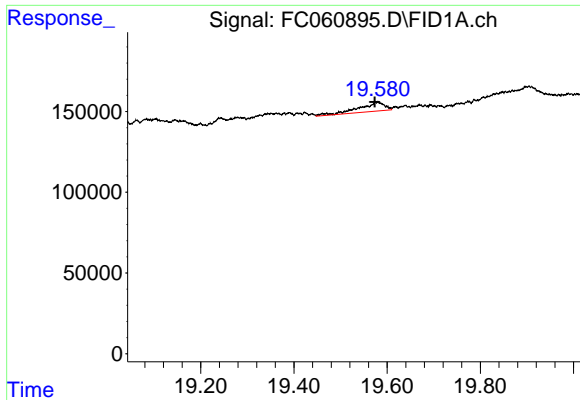
#19 n-Tetratriacontane (C34)

R.T.: 18.177 min  
Delta R.T.: 0.006 min  
Response: 244673  
Conc: 1.95 ug/ml



#20 n-Hexatriacontane (C36)

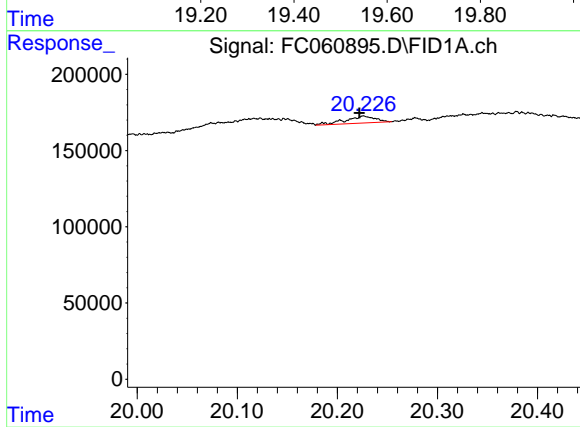
R.T.: 18.898 min  
Delta R.T.: 0.006 min  
Response: 67941  
Conc: 0.56 ug/ml



#21 n-Octatriacontane (C38)

R.T.: 19.579 min  
Delta R.T.: 0.006 min  
Response: 217890  
Conc: 1.85 ug/ml

Instrument :  
FID\_C  
ClientSampleId :



#22 n-Tetracontane (C40)

R.T.: 20.227 min  
Delta R.T.: 0.005 min  
Response: 93420  
Conc: 0.81 ug/ml