

Data Path : Z:\pestpcbsrv\HPCHEM1\FID_C\Data\FC073021AL\
 Data File : FC054932.D
 Signal(s) : FID1A.CH
 Acq On : 30 Jul 2021 19:25
 Operator : AJ\MA
 Sample : PB138080BL
 Misc :
 ALS Vial : 13 Sample Multiplier: 1

Integration File: autoint1.e
 Quant Time: Jul 30 21:34:22 2021
 Quant Method : Z:\pestpcbsrv\HPCHEM1\FID_C\Method\Alaphatic EPH 072121.M
 Quant Title : GC Extractables
 QLast Update : Wed Jul 21 03:37:32 2021
 Response via : Initial Calibration
 Integrator: ChemStation 6890 Scale Mode: Large solvent peaks clipped

Volume Inj. : 1 ul
 Signal Phase : Rxi-1ms
 Signal Info : 20M x 0.18mm x 0.18um

Compound	R.T.	Response	Conc Units

System Monitoring Compounds			
9) S ortho-Terphenyl (SURR)	11.315	7250342	52.124 ug/ml
Spiked Amount	50.000	Recovery	= 104.25%
12) S 1-chlorooctadecane (S...	12.759	5693207	51.214 ug/ml
Spiked Amount	50.000	Recovery	= 102.43%

Target Compounds

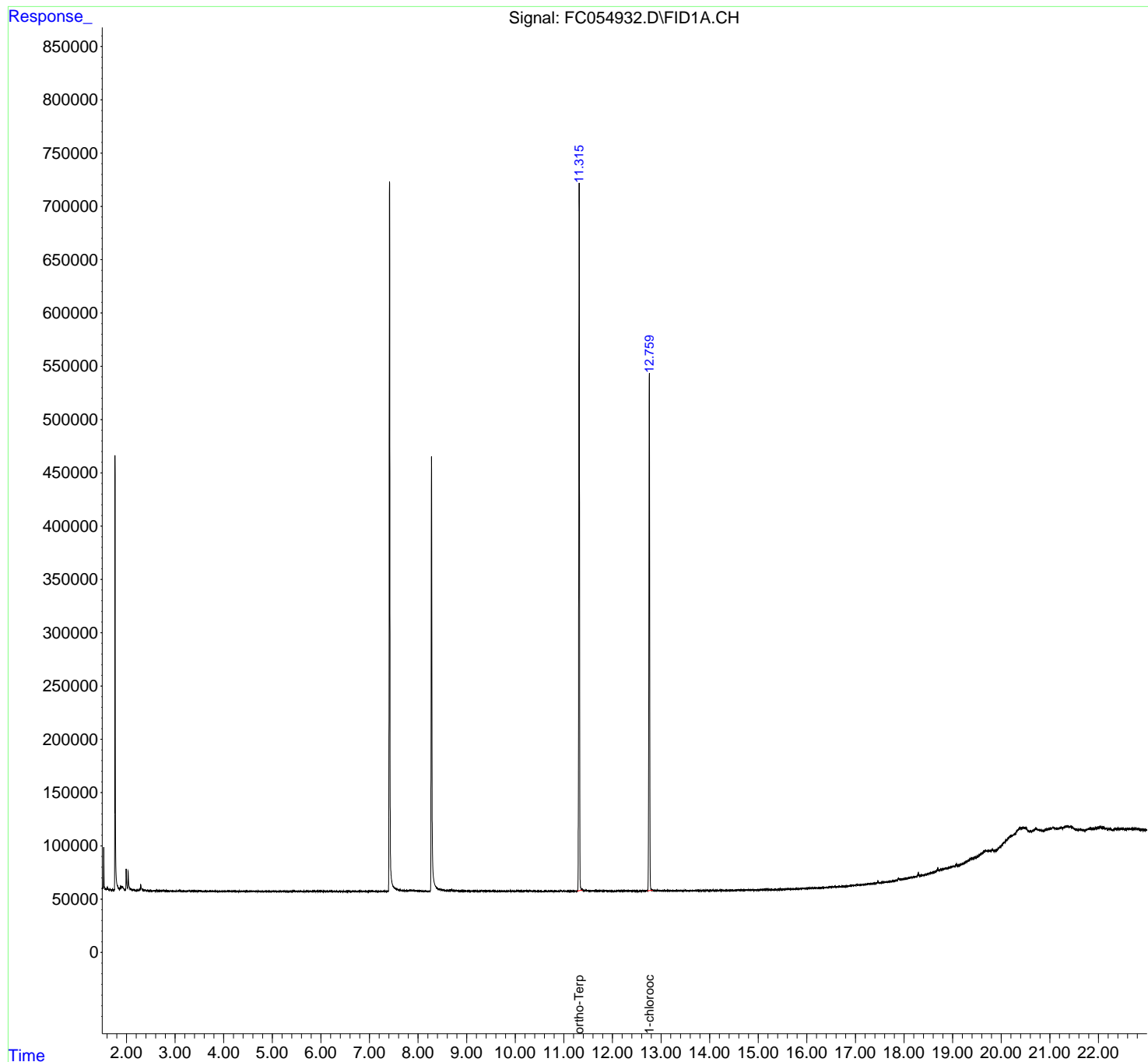
(f)=RT Delta > 1/2 Window

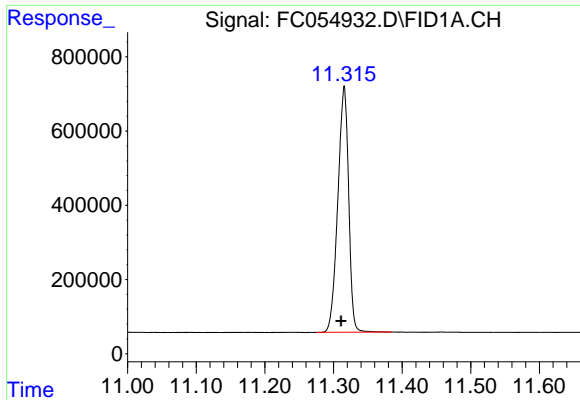
(m)=manual int.

Data Path : Z:\pestpcbsrv\HPCHEM1\FID_C\Data\FC073021AL\
Data File : FC054932.D
Signal(s) : FID1A.CH
Acq On : 30 Jul 2021 19:25
Operator : AJ\MA
Sample : PB138080BL
Misc :
ALS Vial : 13 Sample Multiplier: 1

Integration File: autoint1.e
Quant Time: Jul 30 21:34:22 2021
Quant Method : Z:\pestpcbsrv\HPCHEM1\FID_C\Method\Alaphatic EPH 072121.M
Quant Title : GC Extractables
QLast Update : Wed Jul 21 03:37:32 2021
Response via : Initial Calibration
Integrator: ChemStation 6890 Scale Mode: Large solvent peaks clipped

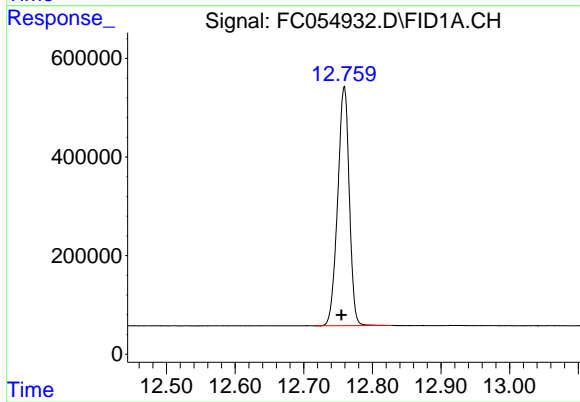
Volume Inj. : 1 ul
Signal Phase : Rxi-1ms
Signal Info : 20M x 0.18mm x 0.18um





#9 ortho-Terphenyl (SURR)

R.T.: 11.315 min
Delta R.T.: 0.004 min
Response: 7250342
Conc: 52.12 ug/ml



#12 1-chlorooctadecane (SURR)

R.T.: 12.759 min
Delta R.T.: 0.004 min
Response: 5693207
Conc: 51.21 ug/ml