

Data Path : Z:\pestpcbsrv\HPCHEM1\FID\_C\Data\FC080218AL\  
 Data File : FC035745.D  
 Signal(s) : FID1A.CH  
 Acq On : 02 Aug 2018 21:18  
 Operator : AJ\SJ  
 Sample : J4247-01  
 Misc :  
 ALS Vial : 14 Sample Multiplier: 1

Integration File: autoint1.e  
 Quant Time: Aug 03 06:44:47 2018  
 Quant Method : Z:\PESTPCBSRV\HPCHEM1\FID\_C\Method\Alaphatic EPH 080218.M  
 Quant Title : GC Extractables  
 QLast Update : Thu Aug 02 15:00:20 2018  
 Response via : Initial Calibration  
 Integrator: ChemStation 6890 Scale Mode: Large solvent peaks clipped

Volume Inj. : 1 ul  
 Signal Phase : Rxi-1ms  
 Signal Info : 20M x 0.18mm x 0.18um

Compound	R.T.	Response	Conc Units
-----			
System Monitoring Compounds			
9) S ortho-Terphenyl (SURR)	11.424	4441462	43.860 ug/mlm
Spiked Amount	50.000	Recovery	= 87.72%
12) S 1-chlorooctadecane (S...	12.863	3232833	41.956 ug/ml
Spiked Amount	50.000	Recovery	= 83.91%

Target Compounds

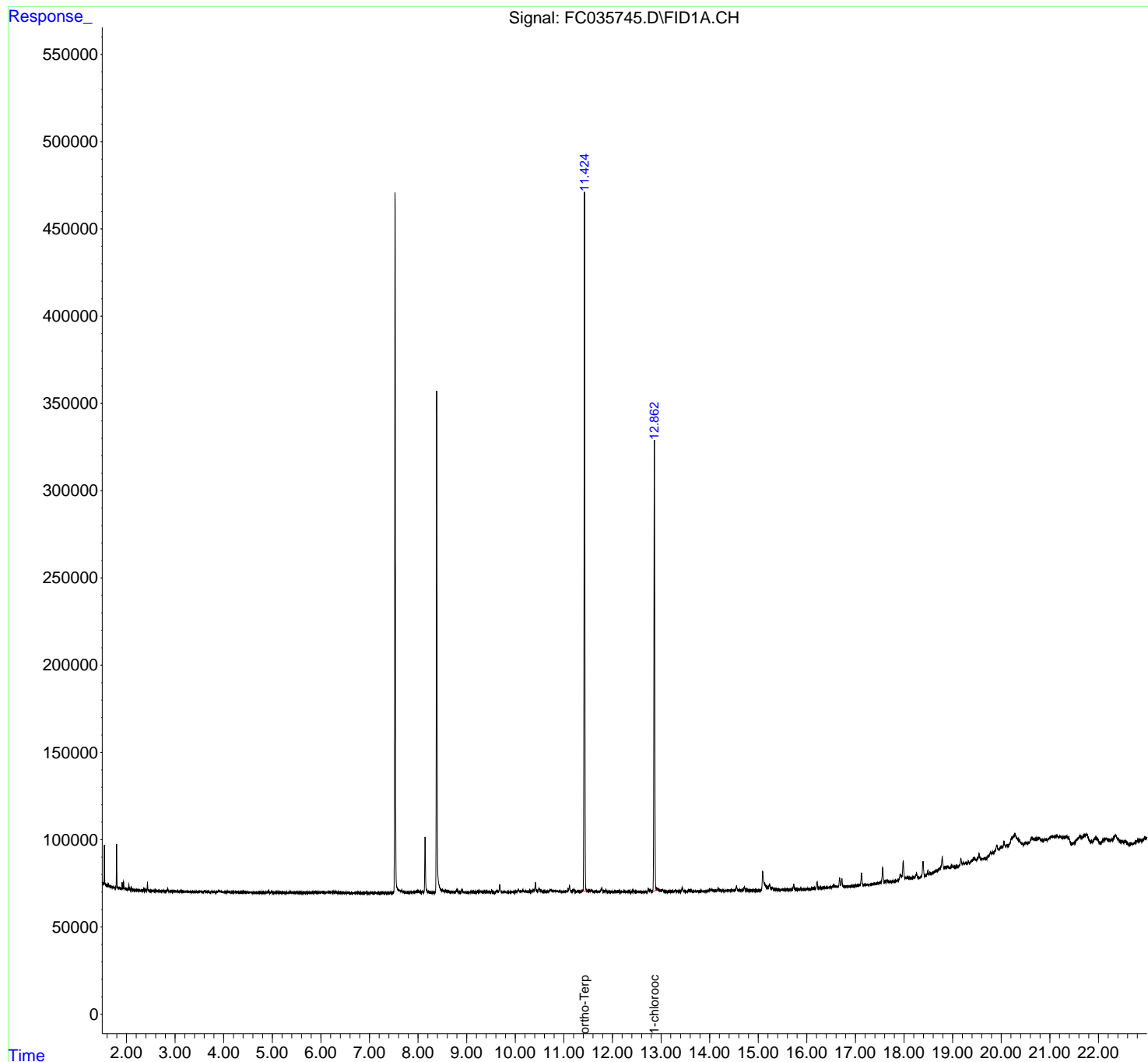
-----

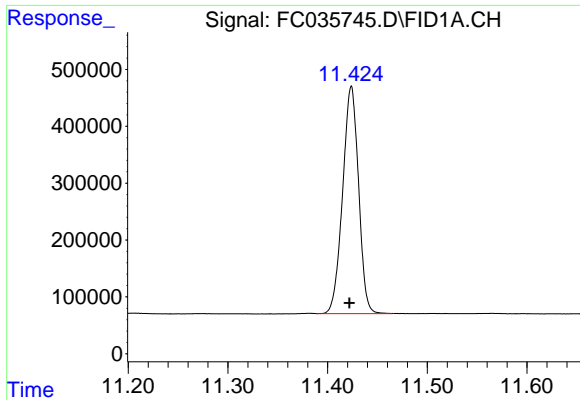
(f)=RT Delta > 1/2 Window (m)=manual int.

Data Path : Z:\pestpcbsrv\HPCHEM1\FID\_C\Data\FC080218AL\  
Data File : FC035745.D  
Signal(s) : FID1A.CH  
Acq On : 02 Aug 2018 21:18  
Operator : AJ\SJ  
Sample : J4247-01  
Misc :  
ALS Vial : 14 Sample Multiplier: 1

Integration File: autoint1.e  
Quant Time: Aug 03 06:44:47 2018  
Quant Method : Z:\PESTPCBSRV\HPCHEM1\FID\_C\Method\Alaphatic EPH 080218.M  
Quant Title : GC Extractables  
QLast Update : Thu Aug 02 15:00:20 2018  
Response via : Initial Calibration  
Integrator: ChemStation 6890 Scale Mode: Large solvent peaks clipped

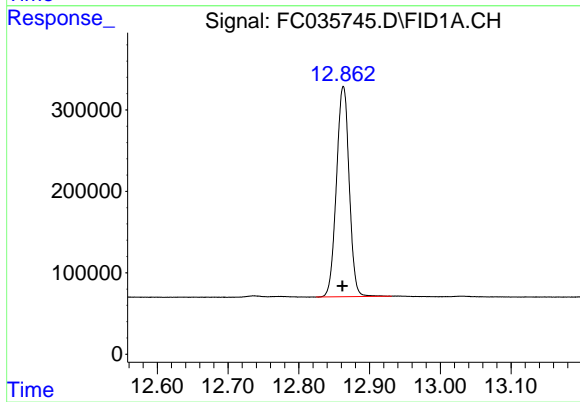
Volume Inj. : 1 ul  
Signal Phase : Rxi-1ms  
Signal Info : 20M x 0.18mm x 0.18um





#9 ortho-Terphenyl (SURR)

R.T.: 11.424 min  
Delta R.T.: 0.002 min  
Response: 4441462  
Conc: 43.86 ug/ml m



#12 1-chlorooctadecane (SURR)

R.T.: 12.863 min  
Delta R.T.: 0.001 min  
Response: 3232833  
Conc: 41.96 ug/ml