

Data Path : Z:\pestpcbsrv\HPCHEM1\FID\_C\Data\FC080320AL\  
 Data File : FC048836.D  
 Signal(s) : FID1A.CH  
 Acq On : 03 Aug 2020 18:02  
 Operator : DD\AJ  
 Sample : L3518-02  
 Misc :  
 ALS Vial : 16 Sample Multiplier: 1

Instrument :  
 FID\_C  
 ClientSampleId :

Integration File: autoint1.e  
 Quant Time: Aug 04 02:36:52 2020  
 Quant Method : Z:\pestpcbsrv\HPCHEM1\FID\_C\Method\Alaphatic EPH 070820.M  
 Quant Title : GC Extractables  
 QLast Update : Wed Jul 08 03:03:00 2020  
 Response via : Initial Calibration  
 Integrator: ChemStation 6890 Scale Mode: Large solvent peaks clipped

Volume Inj. : 1 ul  
 Signal Phase : Rxi-1ms  
 Signal Info : 20M x 0.18mm x 0.18um

Compound	R.T.	Response	Conc Units
-----			
System Monitoring Compounds			
12) S 1-chlorooctadecane (S... Spiked Amount 50.000	13.108	2925281 Recovery =	25.959 ug/ml 51.92%
Target Compounds			
4) T n-Dodecane (C12)	6.508	135716	1.109 ug/ml
14) T n-Tetracosane (C24)	14.930	86653	0.661 ug/ml
-----			

(f)=RT Delta > 1/2 Window

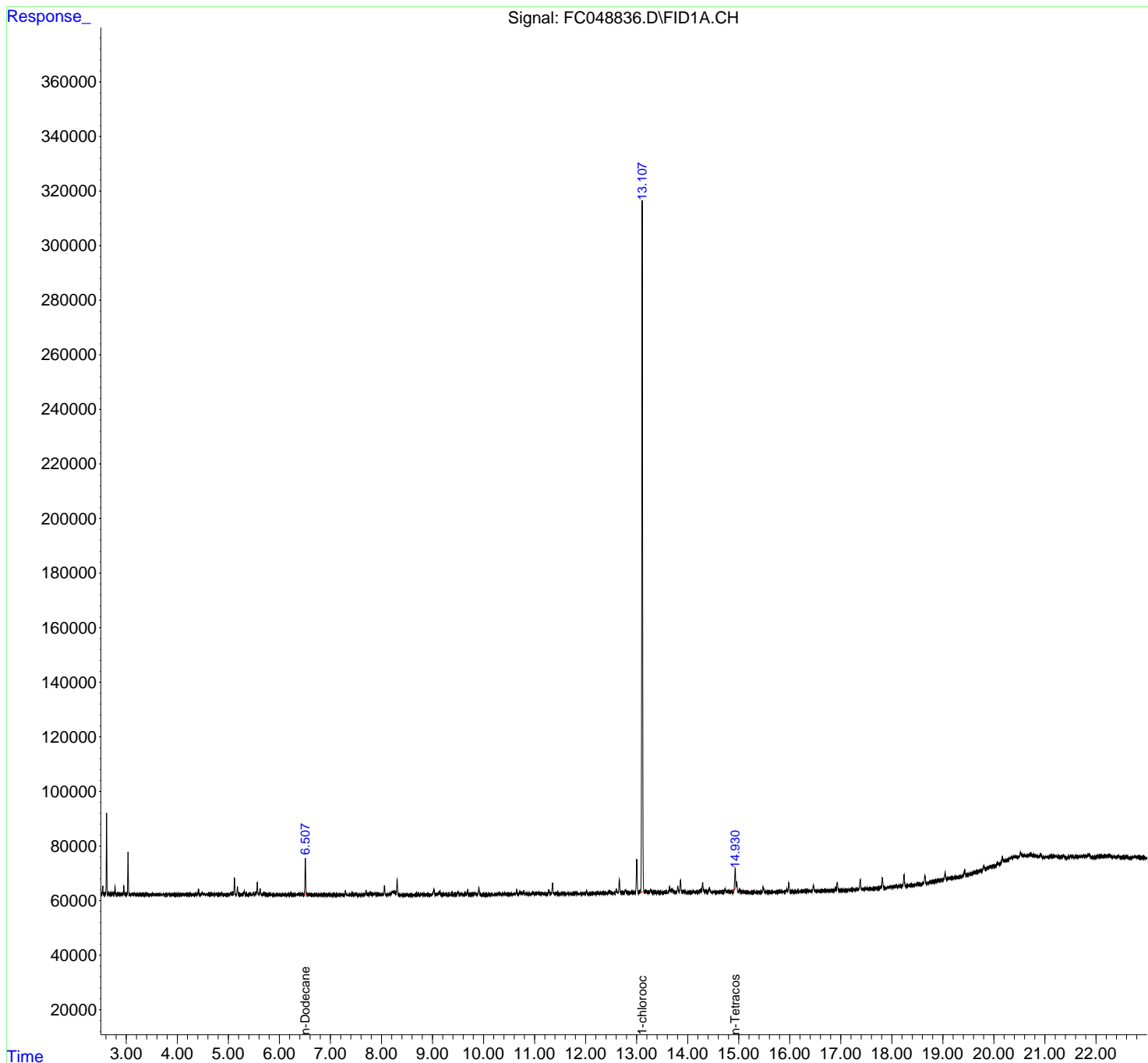
(m)=manual int.

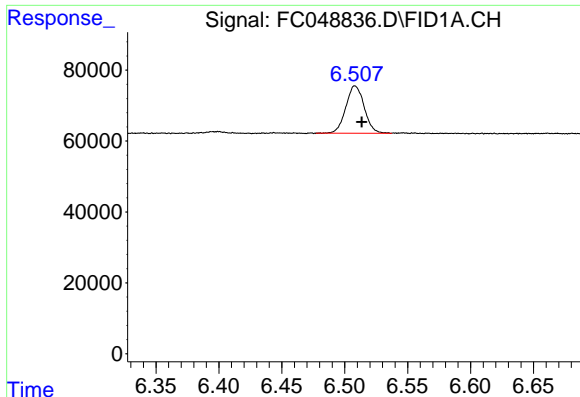
Data Path : Z:\pestpcbsrv\HPCHEM1\FID\_C\Data\FC080320AL\  
Data File : FC048836.D  
Signal(s) : FID1A.CH  
Acq On : 03 Aug 2020 18:02  
Operator : DD\AJ  
Sample : L3518-02  
Misc :  
ALS Vial : 16 Sample Multiplier: 1

Instrument :  
FID\_C  
ClientSampleId :

Integration File: autoint1.e  
Quant Time: Aug 04 02:36:52 2020  
Quant Method : Z:\pestpcbsrv\HPCHEM1\FID\_C\Method\Aliphatic EPH 070820.M  
Quant Title : GC Extractables  
QLast Update : Wed Jul 08 03:03:00 2020  
Response via : Initial Calibration  
Integrator: ChemStation 6890 Scale Mode: Large solvent peaks clipped

Volume Inj. : 1 ul  
Signal Phase : Rxi-1ms  
Signal Info : 20M x 0.18mm x 0.18um

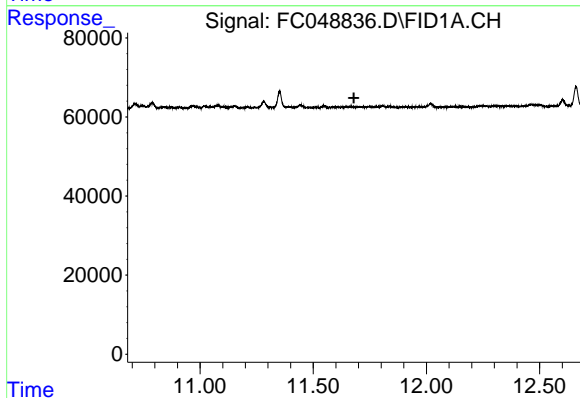




#4 n-Dodecane (C12)

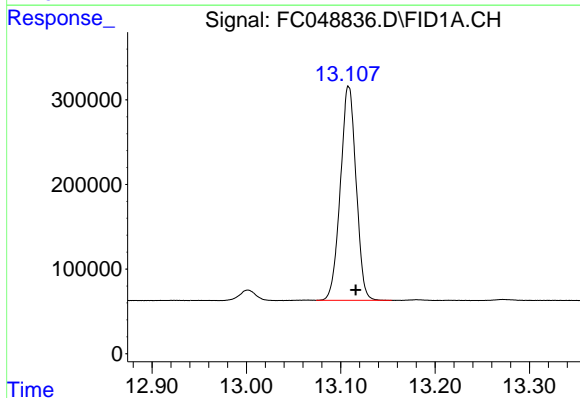
R.T.: 6.508 min  
Delta R.T.: -0.005 min  
Response: 135716  
Conc: 1.11 ug/ml

Instrument :  
FID\_C  
ClientSampleId :



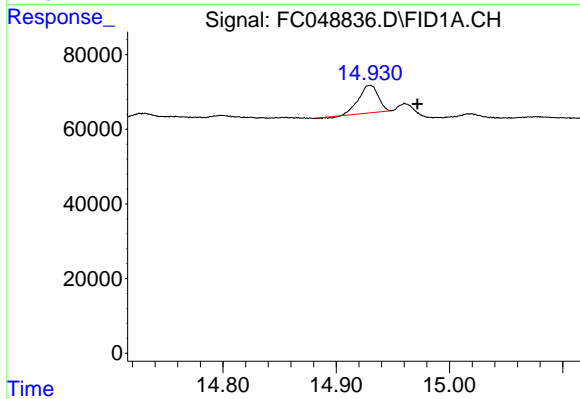
#9 ortho-Terphenyl (SURR)

R.T.: 0.000 min  
Exp R.T. : 11.680 min  
Response: 0  
Conc: N.D.



#12 1-chlorooctadecane (SURR)

R.T.: 13.108 min  
Delta R.T.: -0.007 min  
Response: 2925281  
Conc: 25.96 ug/ml



#14 n-Tetracosane (C24)

R.T.: 14.930 min  
Delta R.T.: -0.042 min  
Response: 86653  
Conc: 0.66 ug/ml