

Data Path : Z:\pestpcbsrv\HPCHEM1\FID_C\Data\FC080322AL\
 Data File : FC060983.D
 Signal(s) : FID1A.ch
 Acq On : 04 Aug 2022 02:33
 Operator : YP/AJ
 Sample : I.BLK
 Misc :
 ALS Vial : 1 Sample Multiplier: 1

Instrument :
 FID_C
 ClientSampleId :

Integration File: autoint1.e
 Quant Time: Aug 04 04:45:39 2022
 Quant Method : Z:\pestpcbsrv\HPCHEM1\FID_C\Method\Aliphatic EPH 072522.M
 Quant Title : GC Extractables
 QLast Update : Mon Jul 25 19:40:54 2022
 Response via : Initial Calibration
 Integrator: ChemStation

Volume Inj. : 1 ul
 Signal Phase : Rxi-1ms
 Signal Info : 20M x 0.18mm x 0.18um

Compound	R.T.	Response	Conc Units

System Monitoring Compounds			
Target Compounds			

(f)=RT Delta > 1/2 Window

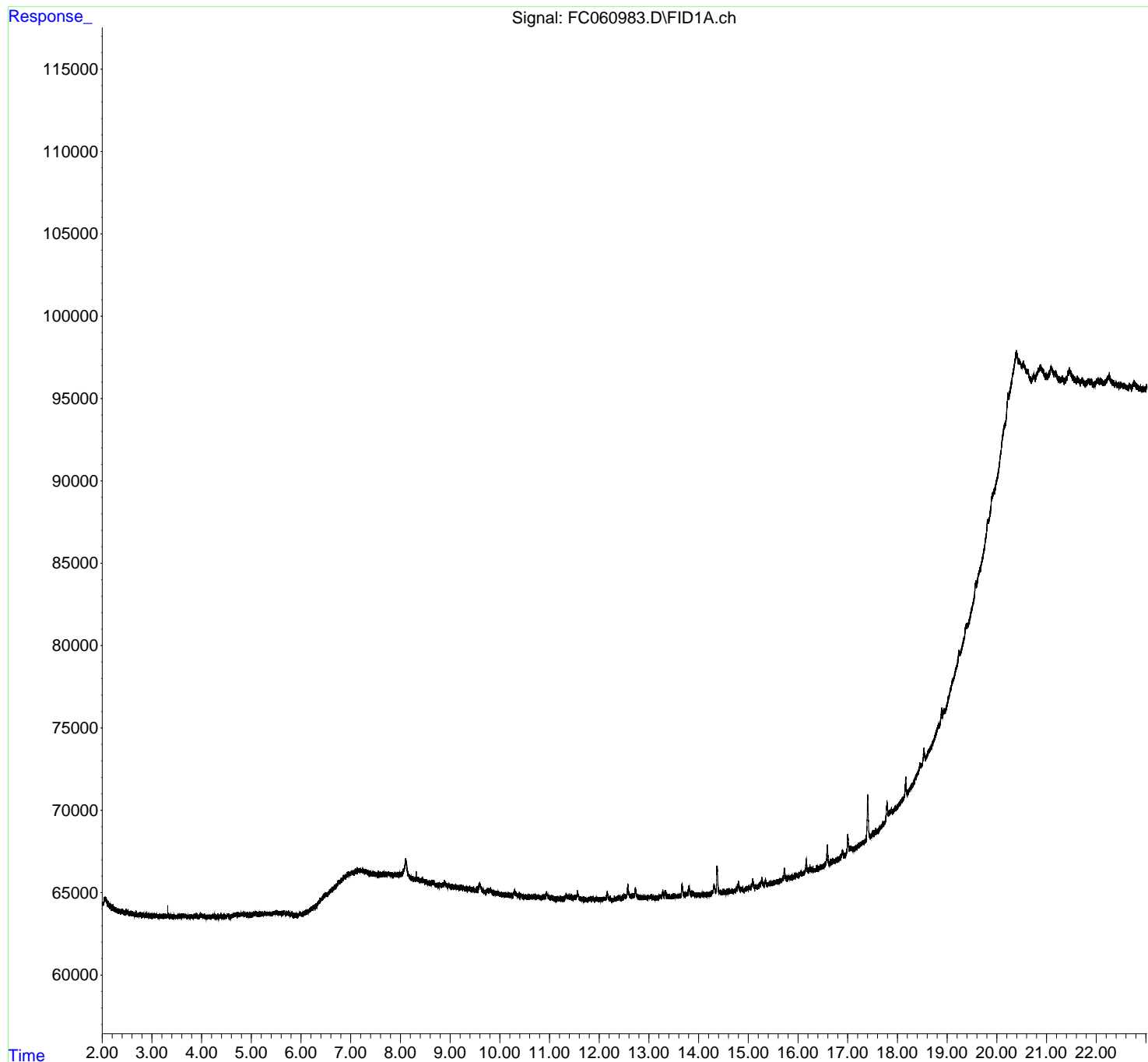
(m)=manual int.

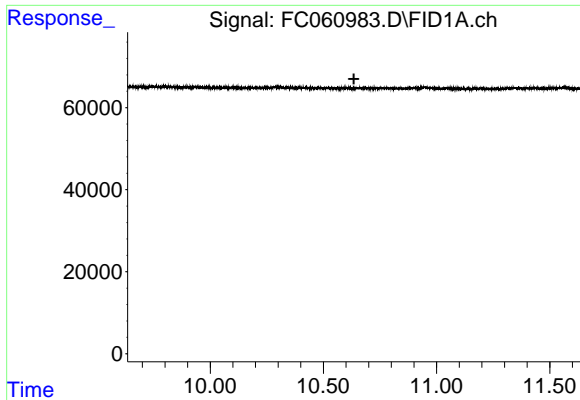
Data Path : Z:\pestpcbsrv\HPCHEM1\FID_C\Data\FC080322AL\
 Data File : FC060983.D
 Signal(s) : FID1A.ch
 Acq On : 04 Aug 2022 02:33
 Operator : YP/AJ
 Sample : I.BLK
 Misc :
 ALS Vial : 1 Sample Multiplier: 1

Instrument :
 FID_C
 ClientSampleId :

Integration File: autoint1.e
 Quant Time: Aug 04 04:45:39 2022
 Quant Method : Z:\pestpcbsrv\HPCHEM1\FID_C\Method\Aliphatic EPH 072522.M
 Quant Title : GC Extractables
 QLast Update : Mon Jul 25 19:40:54 2022
 Response via : Initial Calibration
 Integrator: ChemStation

Volume Inj. : 1 ul
 Signal Phase : Rxi-1ms
 Signal Info : 20M x 0.18mm x 0.18um

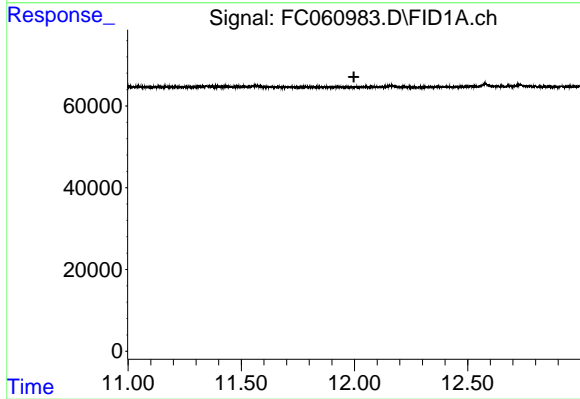




#9 ortho-Terphenyl (SURR)

R.T.: 0.000 min
 Exp R.T. : 10.635 min
 Response: 0
 Conc: N.D.

Instrument :
 FID_C
 ClientSampleId :



#12 1-chlorooctadecane (SURR)

R.T.: 0.000 min
 Exp R.T. : 11.998 min
 Response: 0
 Conc: N.D.