

Data Path : Z:\pestpcbsrv\HPCHEM1\FID\_C\Data\FC080519AL\  
 Data File : FC042702.D  
 Signal(s) : FID1A.CH  
 Acq On : 05 Aug 2019 19:05  
 Operator : DD\AJ  
 Sample : K4090-01  
 Misc :  
 ALS Vial : 11 Sample Multiplier: 1

Integration File: autoint1.e  
 Quant Time: Aug 06 01:32:42 2019  
 Quant Method : Z:\pestpcbsrv\HPCHEM1\FID\_C\Method\Alaphatic EPH 070919.M  
 Quant Title : GC Extractables  
 QLast Update : Wed Jul 10 08:56:11 2019  
 Response via : Initial Calibration  
 Integrator: ChemStation 6890 Scale Mode: Large solvent peaks clipped

Volume Inj. : 1 ul  
 Signal Phase : Rxi-1ms  
 Signal Info : 20M x 0.18mm x 0.18um

Compound	R.T.	Response	Conc Units
System Monitoring Compounds			
9) S ortho-Terphenyl (SURR)	11.685	2894076	21.866 ug/ml
Spiked Amount	50.000	Recovery =	43.73%
12) S 1-chlorooctadecane (S...	13.107	3378263	30.816 ug/ml
Spiked Amount	50.000	Recovery =	61.63%

Target Compounds

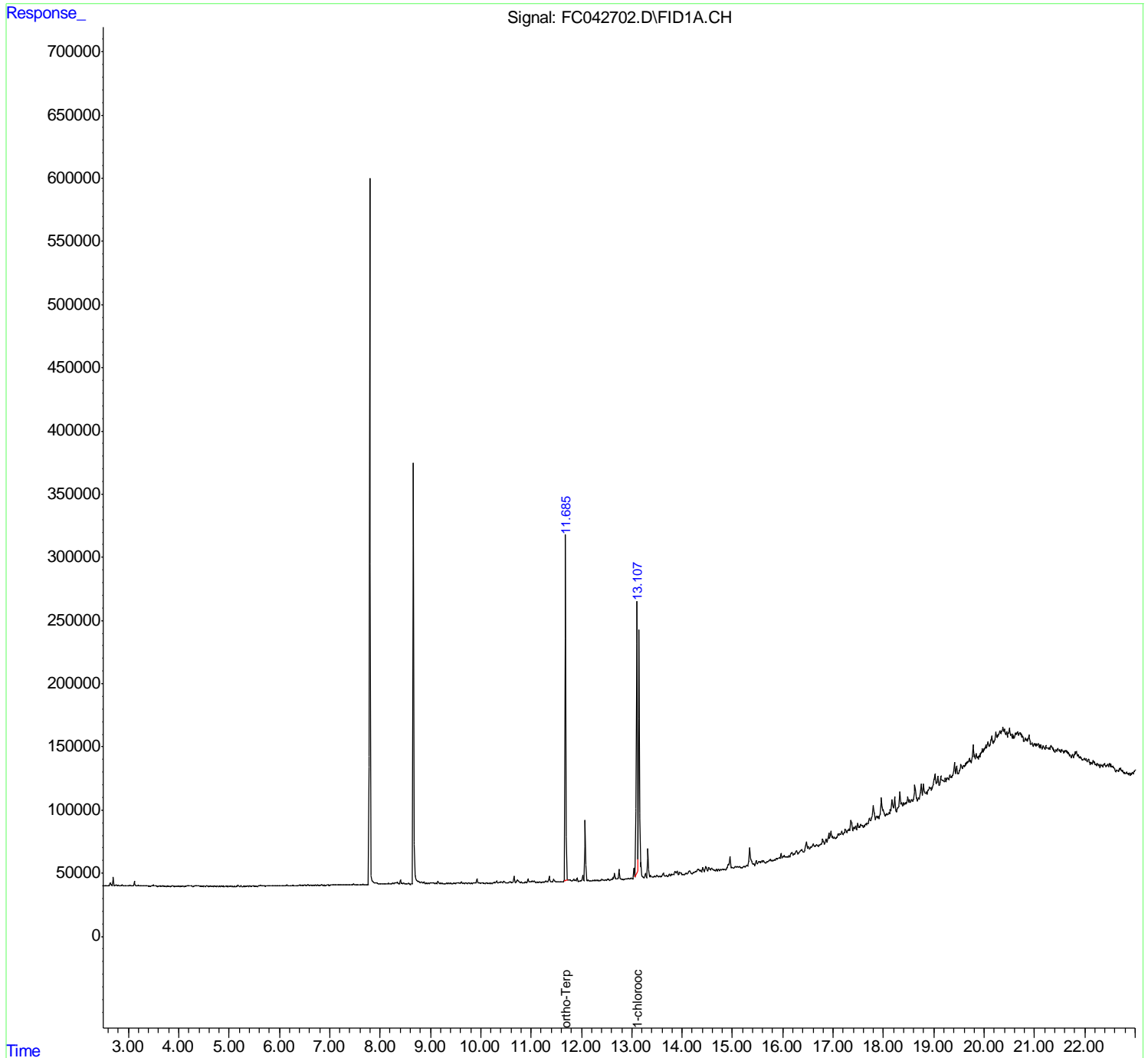
(f)=RT Delta > 1/2 Window

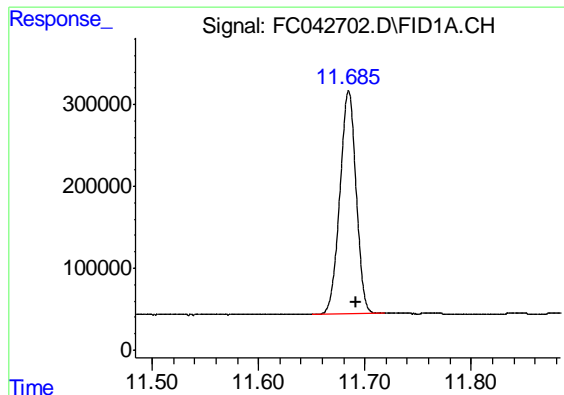
(m)=manual int.

Data Path : Z:\pestpcbsrv\HPCHEM1\FID\_C\Data\FC080519AL\  
Data File : FC042702.D  
Signal(s) : FID1A.CH  
Acq On : 05 Aug 2019 19:05  
Operator : DD\AJ  
Sample : K4090-01  
Misc :  
ALS Vial : 11 Sample Multiplier: 1

Integration File: autoint1.e  
Quant Time: Aug 06 01:32:42 2019  
Quant Method : Z:\pestpcbsrv\HPCHEM1\FID\_C\Method\Aliphatic EPH 070919.M  
Quant Title : GC Extractables  
QLast Update : Wed Jul 10 08:56:11 2019  
Response via : Initial Calibration  
Integrator: ChemStation 6890 Scale Mode: Large solvent peaks clipped

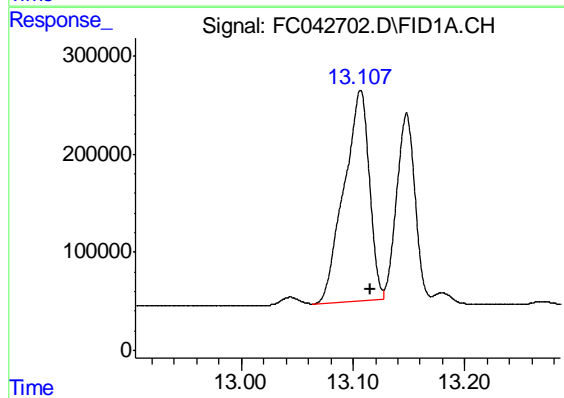
Volume Inj. : 1 ul  
Signal Phase : Rxi-1ms  
Signal Info : 20M x 0.18mm x 0.18um





#9 ortho-Terphenyl (SURR)

R.T.: 11.685 min  
Delta R.T.: -0.006 min  
Response: 2894076  
Conc: 21.87 ug/ml



#12 1-chlorooctadecane (SURR)

R.T.: 13.107 min  
Delta R.T.: -0.009 min  
Response: 3378263  
Conc: 30.82 ug/ml