

Data Path : Z:\pestpcbsrv\HPCHEM1\FID_C\Data\FC080521AL\
 Data File : FC055023.D
 Signal(s) : FID1A.CH
 Acq On : 05 Aug 2021 11:21
 Operator : AJ\MA
 Sample : 20 PPM ALIPHATIC HC STD
 Misc :
 ALS Vial : 2 Sample Multiplier: 1

Instrument :
 FID_C
 ClientSampled :

Integration File: autoint1.e
 Quant Time: Aug 05 22:51:17 2021
 Quant Method : Z:\pestpcbsrv\HPCHEM1\FID_C\Method\Alaphatic EPH 080321.M
 Quant Title : GC Extractables
 QLast Update : Wed Aug 04 02:08:31 2021
 Response via : Initial Calibration
 Integrator: ChemStation 6890 Scale Mode: Large solvent peaks clipped

Volume Inj. : 1 ul
 Signal Phase : Rxi-1ms
 Signal Info : 20M x 0.18mm x 0.18um

Compound	R.T.	Response	Conc Units

System Monitoring Compounds			
9) S ortho-Terphenyl (SURR)	11.304	2520289	20.018 ug/ml
Spiked Amount	50.000	Recovery	= 40.04%
12) S 1-chlorooctadecane (S...	12.745	1955458	19.731 ug/ml
Spiked Amount	50.000	Recovery	= 39.46%
Target Compounds			
1) T n-Nonane (C9)	3.139	2228827	21.315 ug/ml
2) T n-Decane (C10)	4.189	2292081	21.766 ug/ml
3) T A~Naphthalene (C11.7)	5.754	2407253	22.154 ug/ml
4) T n-Dodecane (C12)	6.191	2359128	21.725 ug/ml
5) T A~2-methylnaphthalene...	6.804	2423948	22.210 ug/ml
6) T n-Tetradecane (C14)	7.975	2415288	21.635 ug/ml
7) T n-Hexadecane (C16)	9.567	2407850	21.112 ug/ml
8) T n-Octadecane (C18)	11.001	2433111	20.633 ug/ml
10) T n-Eicosane (C20)	12.305	2350212	20.018 ug/ml
11) T n-Heneicosane (C21)	12.914	2342212	19.836 ug/ml
13) T n-Docosane (C22)	13.499	2276835	19.494 ug/ml
14) T n-Tetracosane (C24)	14.598	2240185	19.354 ug/ml
15) T n-Hexacosane (C26)	15.615	2115797	18.879 ug/ml
16) T n-Octacosane (C28)	16.562	2050976	18.890 ug/ml
17) T n-Tricontane (C30)	17.447	2007153	19.224 ug/ml
18) T n-Dotriacontane (C32)	18.278	1911119	19.298 ug/ml
19) T n-Tetratriacontane (C34)	19.059	1881637	19.853 ug/ml
20) T n-Hexatriacontane (C36)	19.797	1813841	20.072 ug/ml
21) T n-Octatriacontane (C38)	20.499	2684376	31.068 ug/ml
22) T n-Tetracontane (C40)	21.307	1824305	20.485 ug/ml

(f)=RT Delta > 1/2 Window

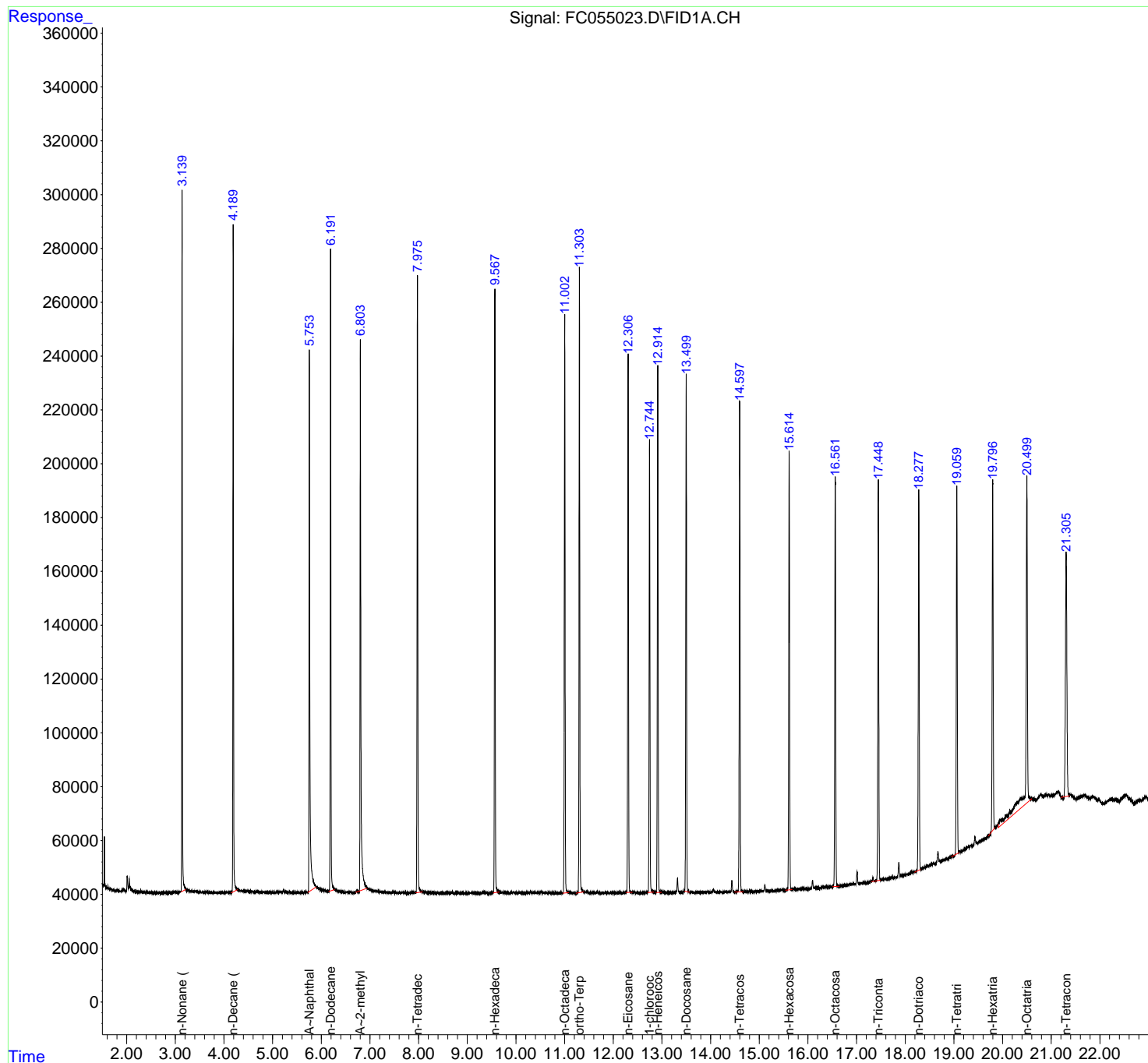
(m)=manual int.

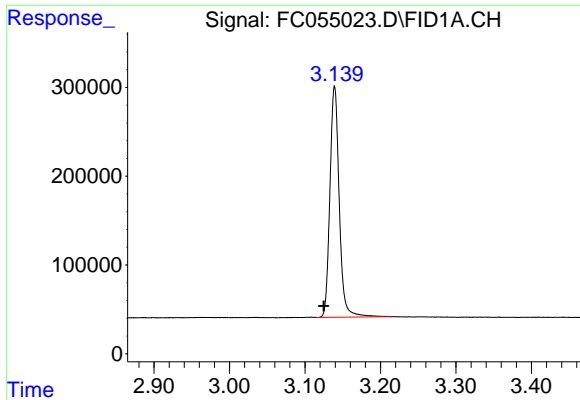
Data Path : Z:\pestpcbsrv\HPCHEM1\FID_C\Data\FC080521AL\
Data File : FC055023.D
Signal(s) : FID1A.CH
Acq On : 05 Aug 2021 11:21
Operator : AJ\MA
Sample : 20 PPM ALIPHATIC HC STD
Misc :
ALS Vial : 2 Sample Multiplier: 1

Instrument :
FID_C
ClientSampled :

Integration File: autoint1.e
Quant Time: Aug 05 22:51:17 2021
Quant Method : Z:\pestpcbsrv\HPCHEM1\FID_C\Method\Aliphatic EPH 080321.M
Quant Title : GC Extractables
QLast Update : Wed Aug 04 02:08:31 2021
Response via : Initial Calibration
Integrator: ChemStation 6890 Scale Mode: Large solvent peaks clipped

Volume Inj. : 1 ul
Signal Phase : Rxi-1ms
Signal Info : 20M x 0.18mm x 0.18um

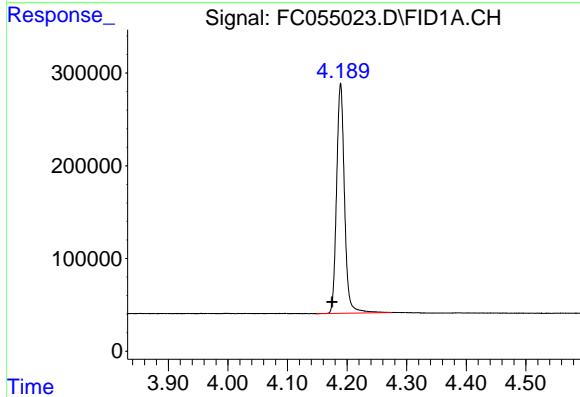




#1 n-Nonane (C9)

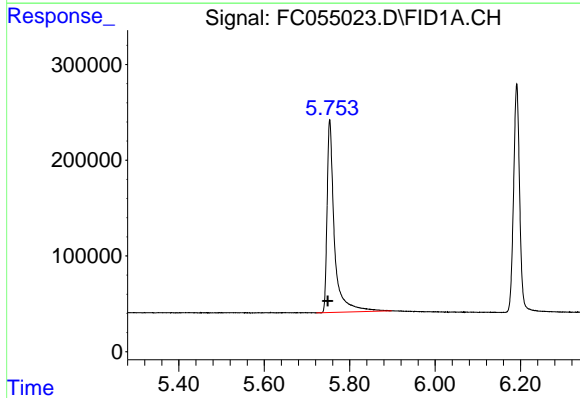
R.T.: 3.139 min
Delta R.T.: 0.014 min
Response: 2228827
Conc: 21.31 ug/ml

Instrument :
FID_C
ClientSampleId :



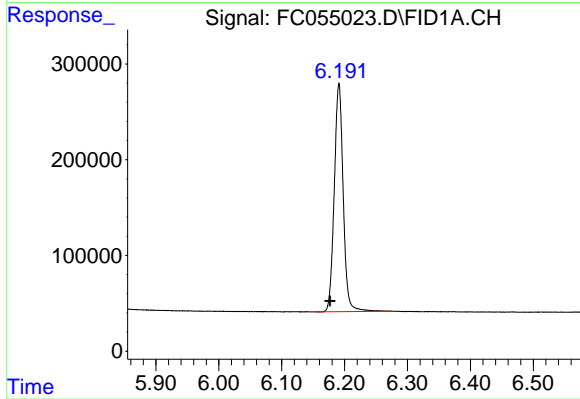
#2 n-Decane (C10)

R.T.: 4.189 min
Delta R.T.: 0.014 min
Response: 2292081
Conc: 21.77 ug/ml



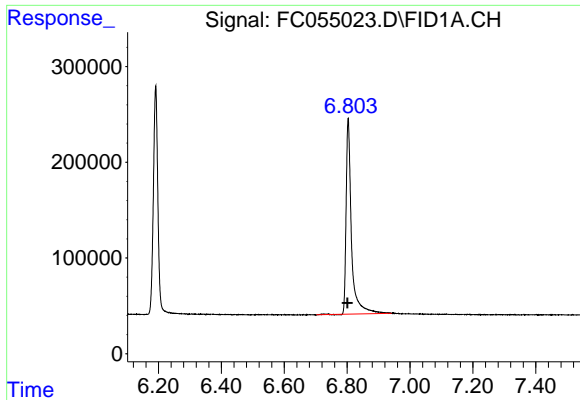
#3 A~Naphthalene (C11.7)

R.T.: 5.754 min
Delta R.T.: 0.005 min
Response: 2407253
Conc: 22.15 ug/ml



#4 n-Dodecane (C12)

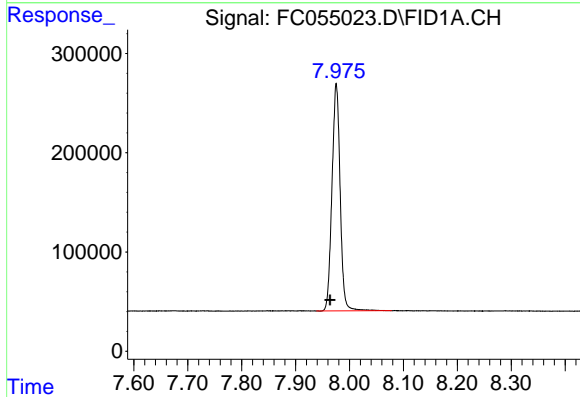
R.T.: 6.191 min
Delta R.T.: 0.014 min
Response: 2359128
Conc: 21.72 ug/ml



#5 A~2-methylnaphthalene (C12.89)

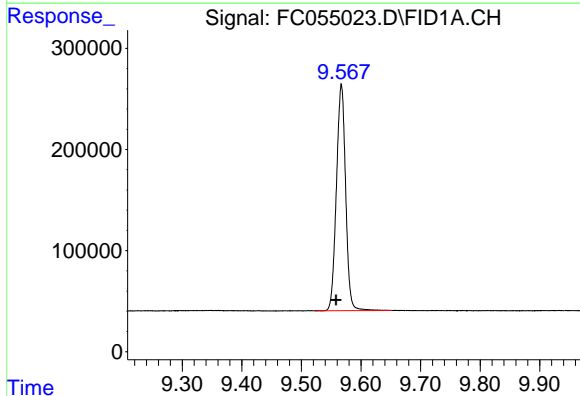
R.T.: 6.804 min
 Delta R.T.: 0.003 min
 Response: 2423948
 Conc: 22.21 ug/ml

Instrument :
 FID_C
 ClientSampled :



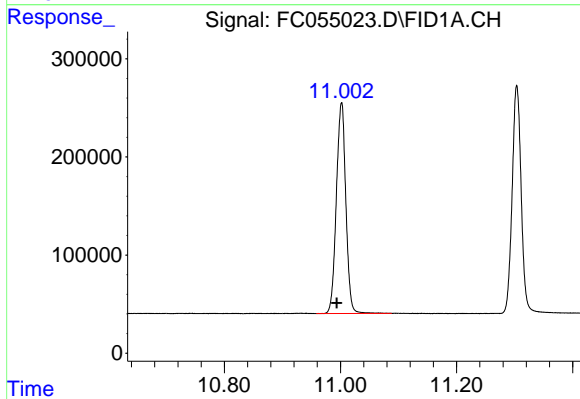
#6 n-Tetradecane (C14)

R.T.: 7.975 min
 Delta R.T.: 0.012 min
 Response: 2415288
 Conc: 21.64 ug/ml



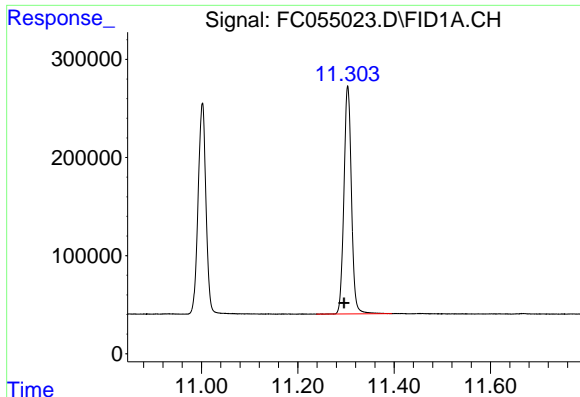
#7 n-Hexadecane (C16)

R.T.: 9.567 min
 Delta R.T.: 0.009 min
 Response: 2407850
 Conc: 21.11 ug/ml



#8 n-Octadecane (C18)

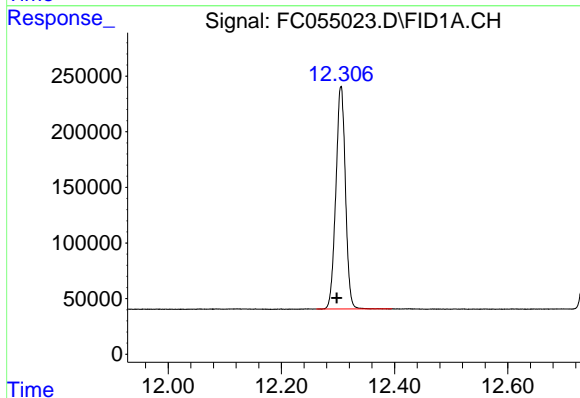
R.T.: 11.001 min
 Delta R.T.: 0.008 min
 Response: 2433111
 Conc: 20.63 ug/ml



#9 ortho-Terphenyl (SURR)

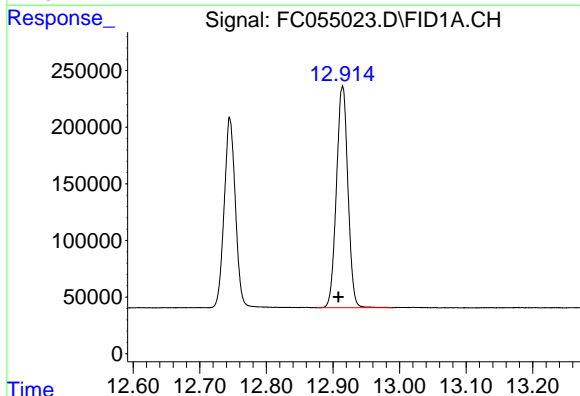
R.T.: 11.304 min
Delta R.T.: 0.007 min
Response: 2520289
Conc: 20.02 ug/ml

Instrument :
FID_C
ClientSampled :



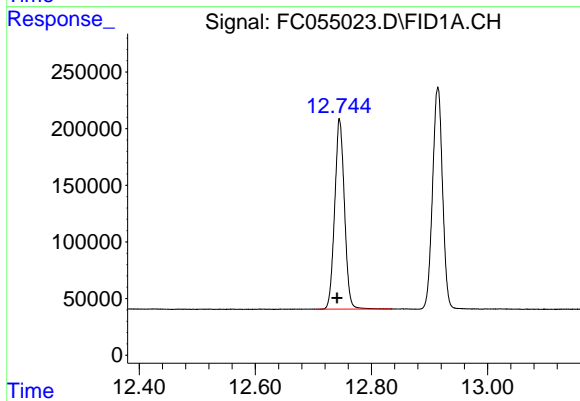
#10 n-Eicosane (C20)

R.T.: 12.305 min
Delta R.T.: 0.007 min
Response: 2350212
Conc: 20.02 ug/ml



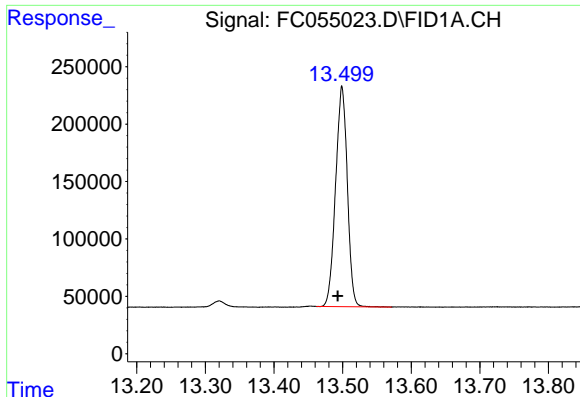
#11 n-Heneicosane (C21)

R.T.: 12.914 min
Delta R.T.: 0.006 min
Response: 2342212
Conc: 19.84 ug/ml



#12 1-chlorooctadecane (SURR)

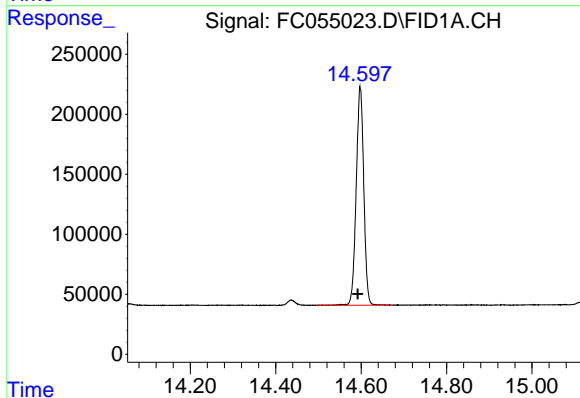
R.T.: 12.745 min
Delta R.T.: 0.005 min
Response: 1955458
Conc: 19.73 ug/ml



#13 n-Docosane (C22)

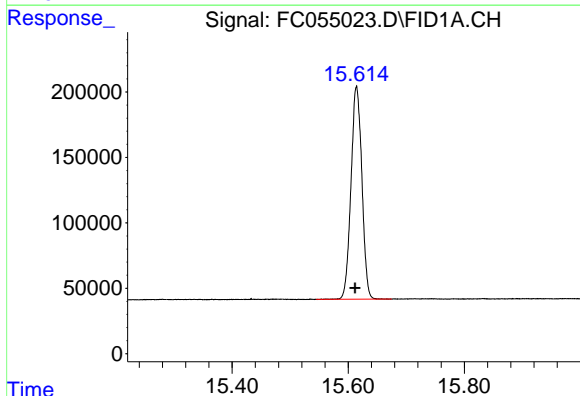
R.T.: 13.499 min
Delta R.T.: 0.006 min
Response: 2276835
Conc: 19.49 ug/ml

Instrument :
FID_C
ClientSampled :



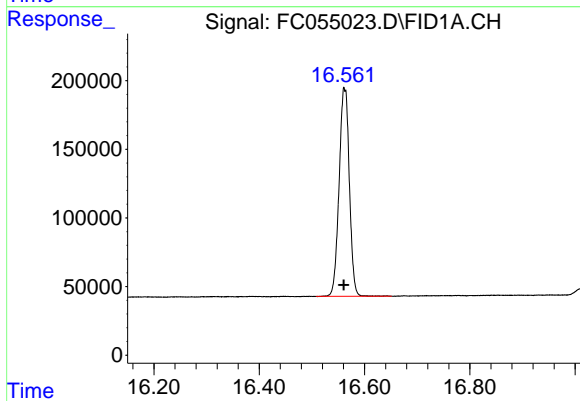
#14 n-Tetracosane (C24)

R.T.: 14.598 min
Delta R.T.: 0.005 min
Response: 2240185
Conc: 19.35 ug/ml



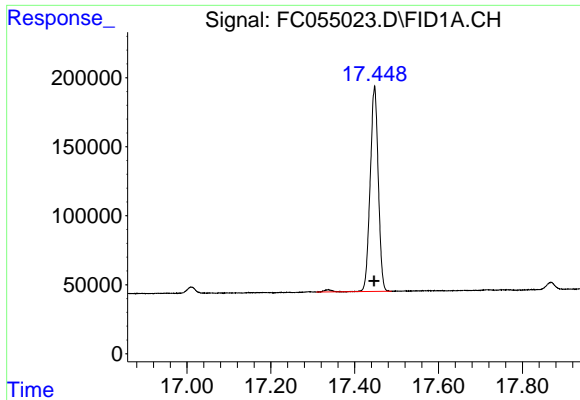
#15 n-Hexacosane (C26)

R.T.: 15.615 min
Delta R.T.: 0.003 min
Response: 2115797
Conc: 18.88 ug/ml



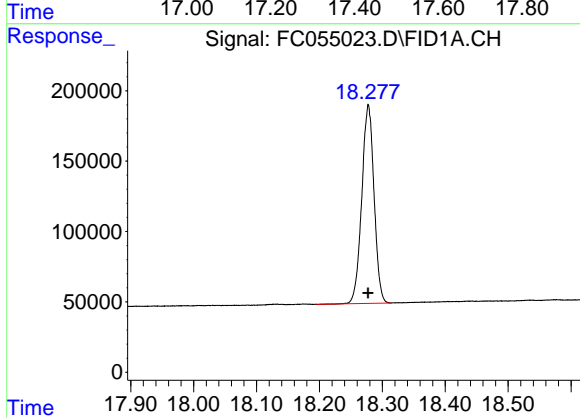
#16 n-Octacosane (C28)

R.T.: 16.562 min
Delta R.T.: 0.001 min
Response: 2050976
Conc: 18.89 ug/ml

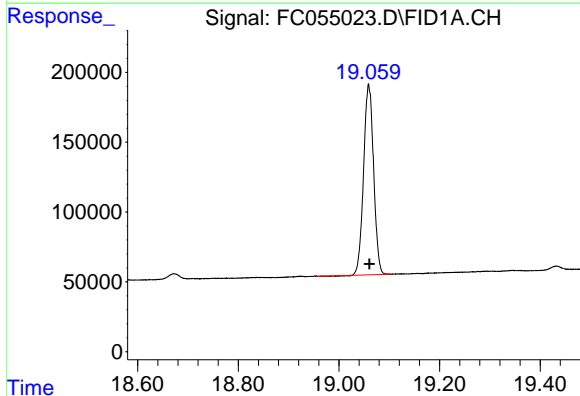


#17 n-Tricontane (C30)
 R.T.: 17.447 min
 Delta R.T.: 0.000 min
 Response: 2007153
 Conc: 19.22 ug/ml

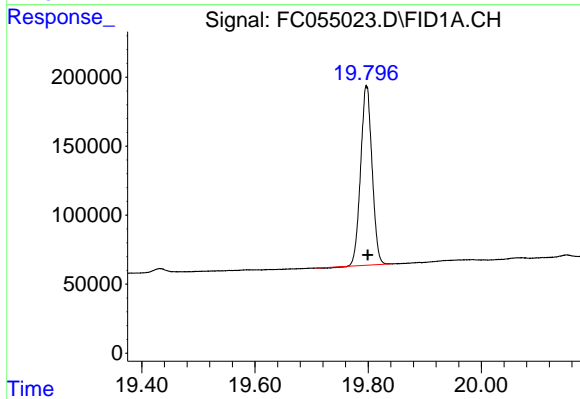
Instrument :
 FID_C
 ClientSampleId :



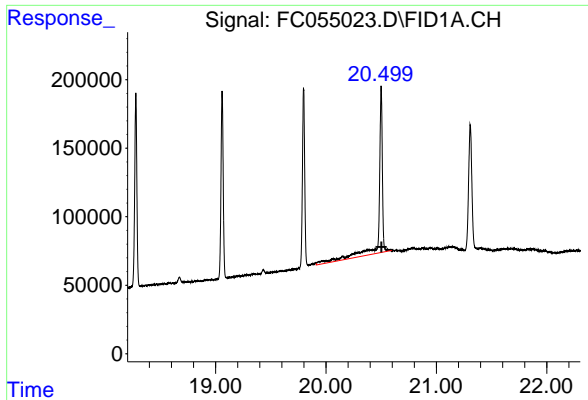
#18 n-Dotriacontane (C32)
 R.T.: 18.278 min
 Delta R.T.: 0.000 min
 Response: 1911119
 Conc: 19.30 ug/ml



#19 n-Tetratriacontane (C34)
 R.T.: 19.059 min
 Delta R.T.: -0.001 min
 Response: 1881637
 Conc: 19.85 ug/ml



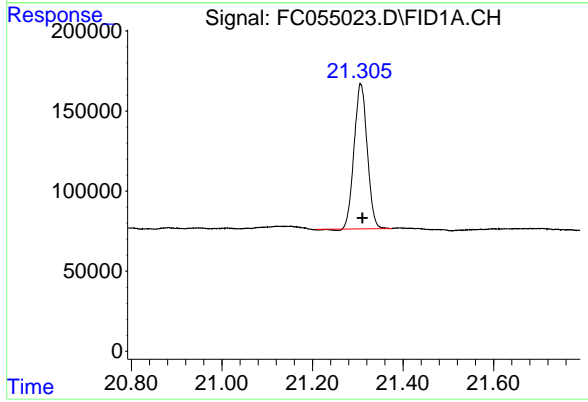
#20 n-Hexatriacontane (C36)
 R.T.: 19.797 min
 Delta R.T.: -0.002 min
 Response: 1813841
 Conc: 20.07 ug/ml



#21 n-Octatriacontane (C38)

R.T.: 20.499 min
Delta R.T.: -0.003 min
Response: 2684376
Conc: 31.07 ug/ml

Instrument :
FID_C
ClientSampled :



#22 n-Tetracontane (C40)

R.T.: 21.307 min
Delta R.T.: -0.004 min
Response: 1824305
Conc: 20.49 ug/ml