

Data Path : Z:\pestpcbsrv\HPCHEM1\FID_C\Data\FC080624AL\
 Data File : FC066945.D
 Signal(s) : FID1A.ch
 Acq On : 06 Aug 2024 15:30
 Operator : YP/AJ
 Sample : 20 PPM ALIPHATIC HC STD
 Misc :
 ALS Vial : 2 Sample Multiplier: 1

Instrument :
 FID_C
 ClientSampleId :
 20 PPM ALIPHATIC HC STD

Integration File: autoint1.e
 Quant Time: Aug 07 03:42:24 2024
 Quant Method : Z:\pestpcbsrv\HPCHEM1\FID_C\Method\Aliphatic EPH 071524.M
 Quant Title : GC Extractables
 QLast Update : Mon Jul 15 13:58:41 2024
 Response via : Initial Calibration
 Integrator: ChemStation

Volume Inj. : 1 ul
 Signal Phase : Rxi-1ms
 Signal Info : 20M x 0.18mm x 0.18um

Compound	R.T.	Response	Conc Units

System Monitoring Compounds			
9) S ortho-Terphenyl (SURR)	11.515	2858415	18.567 ug/ml
Spiked Amount	50.000	Recovery =	37.13%
12) S 1-chlorooctadecane (S...	12.955	2132482	19.071 ug/ml
Spiked Amount	50.000	Recovery =	38.14%
Target Compounds			
1) T n-Nonane (C9)	3.284	2670023	18.817 ug/ml
2) T n-Decane (C10)	4.349	2815525	19.046 ug/ml
3) T A~Naphthalene (C11.7)	5.929	3013330	18.869 ug/ml
4) T n-Dodecane (C12)	6.367	2830885	18.883 ug/ml
5) T A~2-methylnaphthalene...	6.985	2882159	18.801 ug/ml
6) T n-Tetradecane (C14)	8.161	2750760	18.801 ug/ml
7) T n-Hexadecane (C16)	9.761	2777750	18.559 ug/ml
8) T n-Octadecane (C18)	11.203	2746050	18.505 ug/ml
10) T n-Eicosane (C20)	12.511	2589631	18.579 ug/ml
11) T n-Heneicosane (C21)	13.123	2510619	18.432 ug/ml
13) T n-Docosane (C22)	13.709	2500582	18.617 ug/ml
14) T n-Tetracosane (C24)	14.811	2467944	18.554 ug/ml
15) T n-Hexacosane (C26)	15.831	2416422	18.571 ug/ml
16) T n-Octacosane (C28)	16.780	2415357	19.146 ug/ml
17) T n-Tricontane (C30)	17.668	2546852	19.805 ug/ml
18) T n-Dotriacontane (C32)	18.500	2572372	20.433 ug/ml
19) T n-Tetratriacontane (C34)	19.283	2454346	19.839 ug/ml
20) T n-Hexatriacontane (C36)	20.022	2285071	19.644 ug/ml
21) T n-Octatriacontane (C38)	20.750	2258704	20.329 ug/ml
22) T n-Tetracontane (C40)	21.646	2143395	19.716 ug/ml

(f)=RT Delta > 1/2 Window

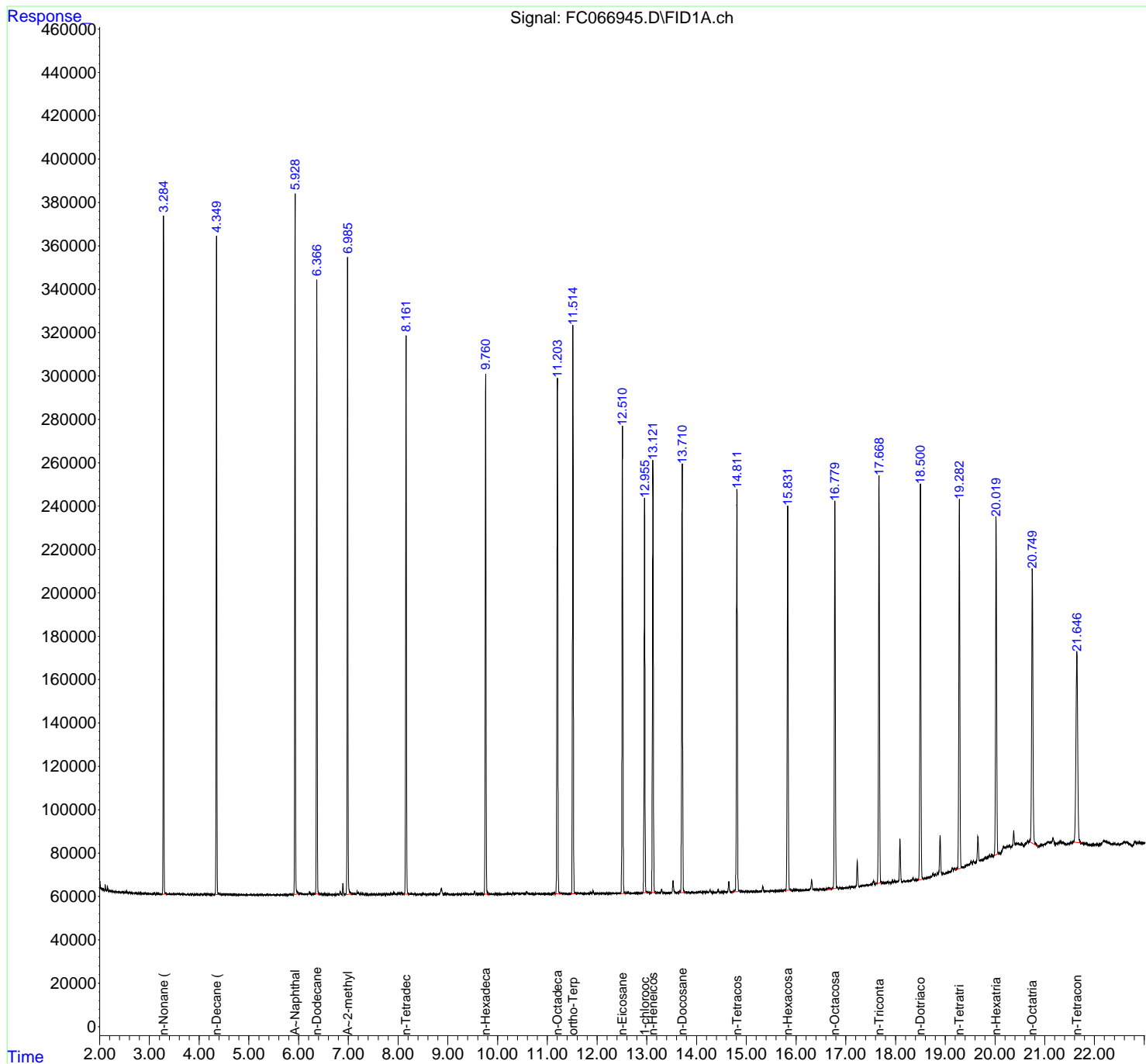
(m)=manual int.

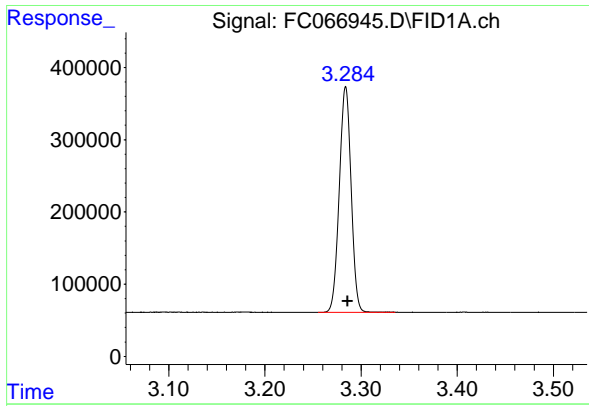
Data Path : Z:\pestpcbsrv\HPCHEM1\FID_C\Data\FC080624AL\
 Data File : FC066945.D
 Signal(s) : FID1A.ch
 Acq On : 06 Aug 2024 15:30
 Operator : YP/AJ
 Sample : 20 PPM ALIPHATIC HC STD
 Misc :
 ALS Vial : 2 Sample Multiplier: 1

Instrument :
 FID_C
 ClientSampleId :
 20 PPM ALIPHATIC HC STD

Integration File: autoint1.e
 Quant Time: Aug 07 03:42:24 2024
 Quant Method : Z:\pestpcbsrv\HPCHEM1\FID_C\Method\Aliphatic EPH 071524.M
 Quant Title : GC Extractables
 QLast Update : Mon Jul 15 13:58:41 2024
 Response via : Initial Calibration
 Integrator: ChemStation

Volume Inj. : 1 ul
 Signal Phase : Rxi-1ms
 Signal Info : 20M x 0.18mm x 0.18um

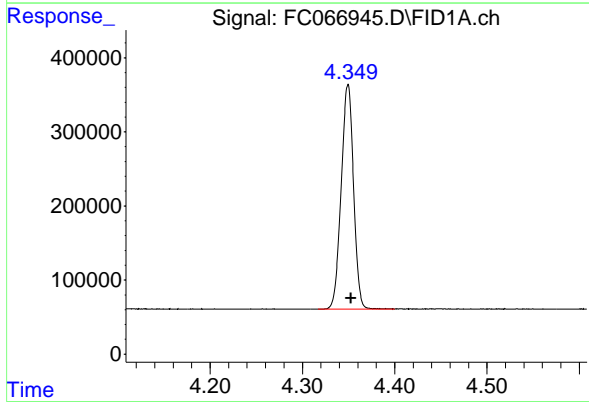




#1 n-Nonane (C9)

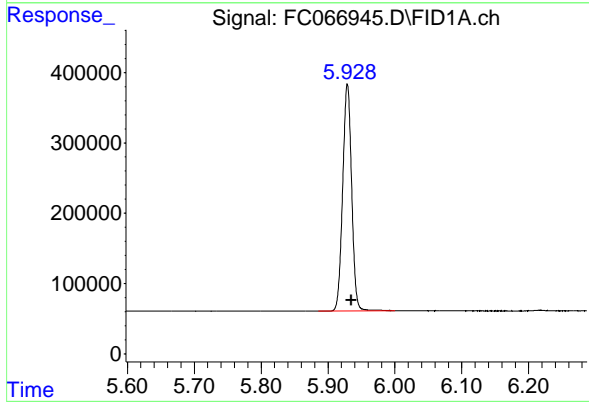
R.T.: 3.284 min
 Delta R.T.: -0.002 min
 Response: 2670023
 Conc: 18.82 ug/ml

Instrument :
 FID_C
 ClientSampleId :
 20 PPM ALIPHATIC HC STD



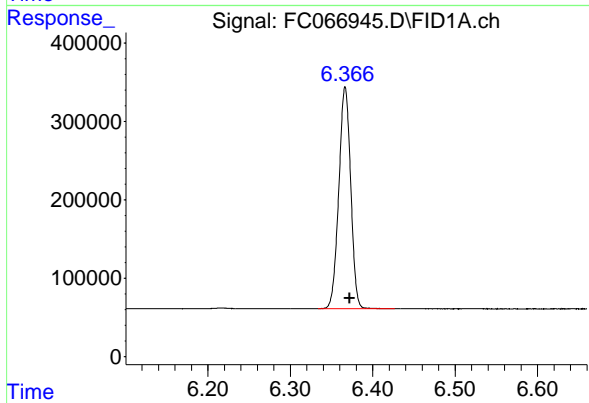
#2 n-Decane (C10)

R.T.: 4.349 min
 Delta R.T.: -0.004 min
 Response: 2815525
 Conc: 19.05 ug/ml



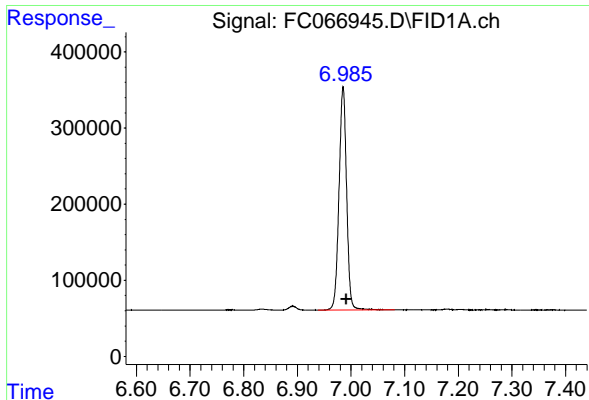
#3 A~Naphthalene (C11.7)

R.T.: 5.929 min
 Delta R.T.: -0.006 min
 Response: 3013330
 Conc: 18.87 ug/ml



#4 n-Dodecane (C12)

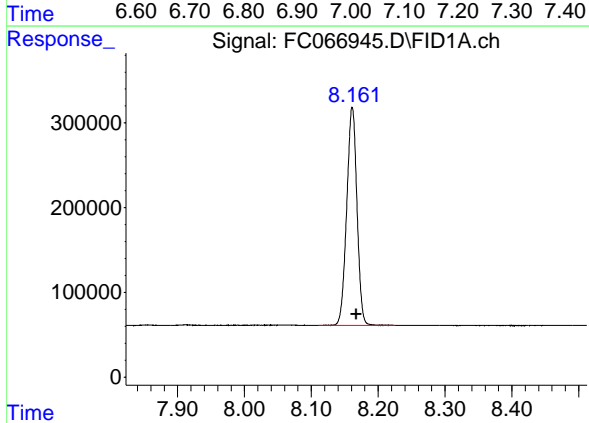
R.T.: 6.367 min
 Delta R.T.: -0.005 min
 Response: 2830885
 Conc: 18.88 ug/ml



#5 A~2-methylnaphthalene (C12.89)

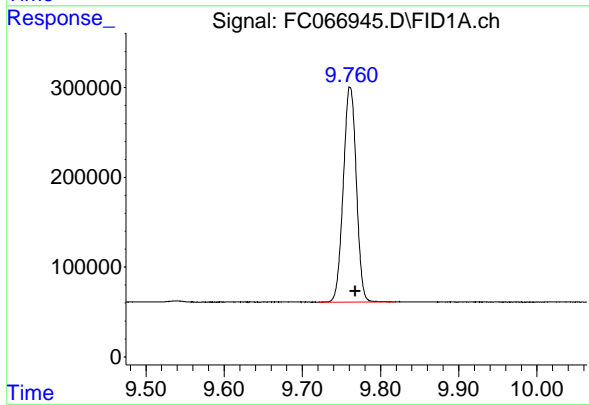
R.T.: 6.985 min
 Delta R.T.: -0.006 min
 Response: 2882159
 Conc: 18.80 ug/ml

Instrument : FID_C
 ClientSampleId : 20 PPM ALIPHATIC HC STD



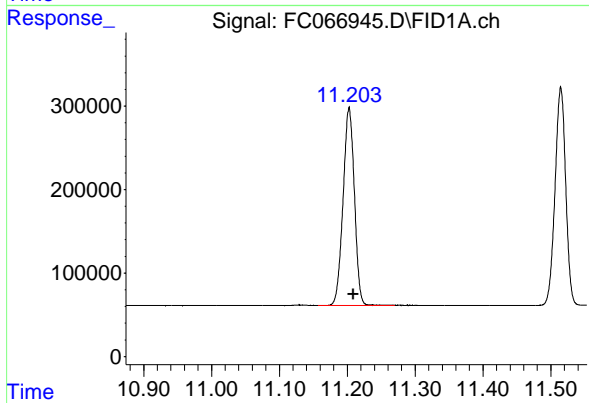
#6 n-Tetradecane (C14)

R.T.: 8.161 min
 Delta R.T.: -0.006 min
 Response: 2750760
 Conc: 18.80 ug/ml



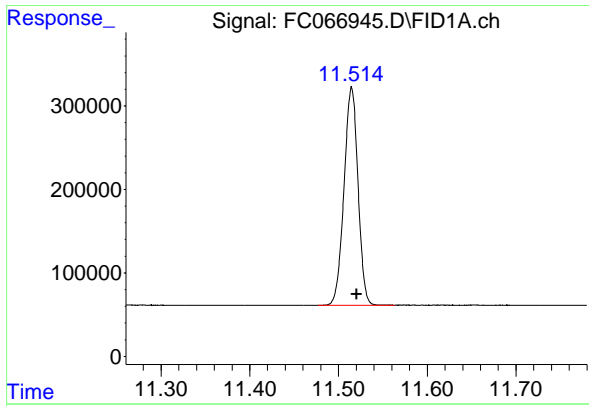
#7 n-Hexadecane (C16)

R.T.: 9.761 min
 Delta R.T.: -0.006 min
 Response: 2777750
 Conc: 18.56 ug/ml



#8 n-Octadecane (C18)

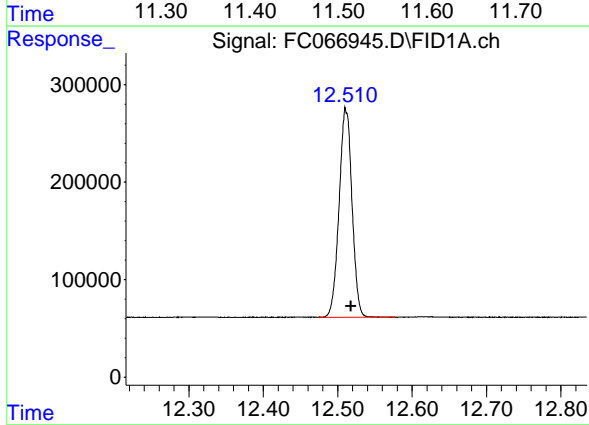
R.T.: 11.203 min
 Delta R.T.: -0.006 min
 Response: 2746050
 Conc: 18.50 ug/ml



#9 ortho-Terphenyl (SURR)

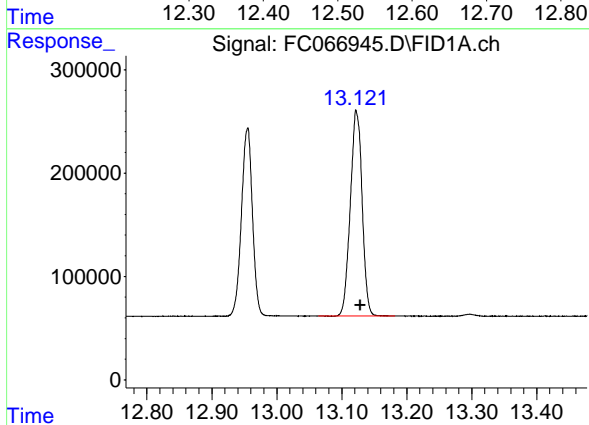
R.T.: 11.515 min
 Delta R.T.: -0.006 min
 Response: 2858415
 Conc: 18.57 ug/ml

Instrument : FID_C
 ClientSampleId : 20 PPM ALIPHATIC HC STD



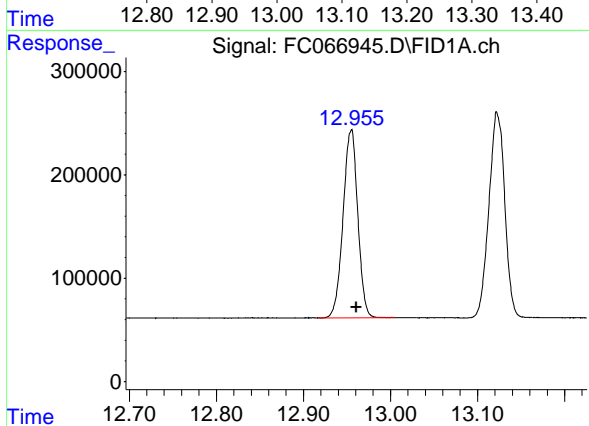
#10 n-Eicosane (C20)

R.T.: 12.511 min
 Delta R.T.: -0.007 min
 Response: 2589631
 Conc: 18.58 ug/ml



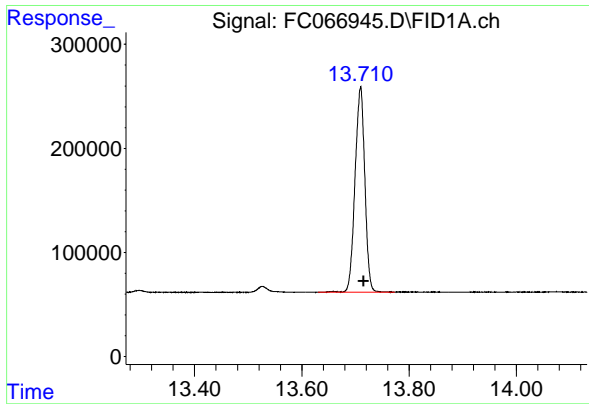
#11 n-Heneicosane (C21)

R.T.: 13.123 min
 Delta R.T.: -0.006 min
 Response: 2510619
 Conc: 18.43 ug/ml



#12 1-chlorooctadecane (SURR)

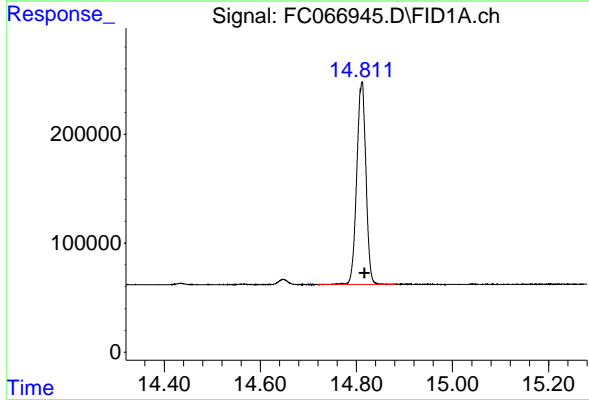
R.T.: 12.955 min
 Delta R.T.: -0.006 min
 Response: 2132482
 Conc: 19.07 ug/ml



#13 n-Docosane (C22)

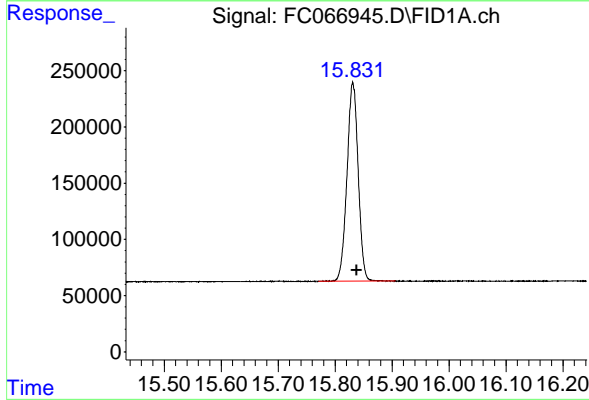
R.T.: 13.709 min
 Delta R.T.: -0.006 min
 Response: 2500582
 Conc: 18.62 ug/ml

Instrument : FID_C
 ClientSampleId : 20 PPM ALIPHATIC HC STD



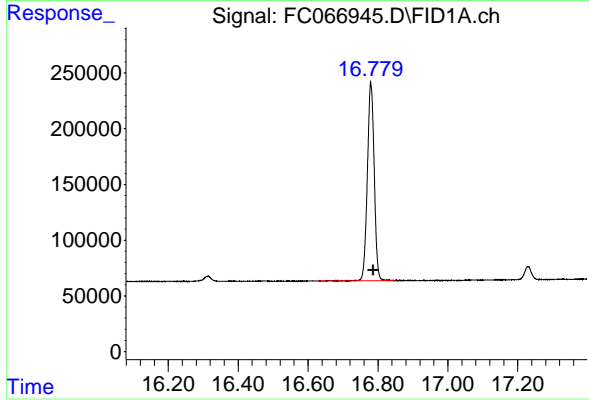
#14 n-Tetracosane (C24)

R.T.: 14.811 min
 Delta R.T.: -0.007 min
 Response: 2467944
 Conc: 18.55 ug/ml



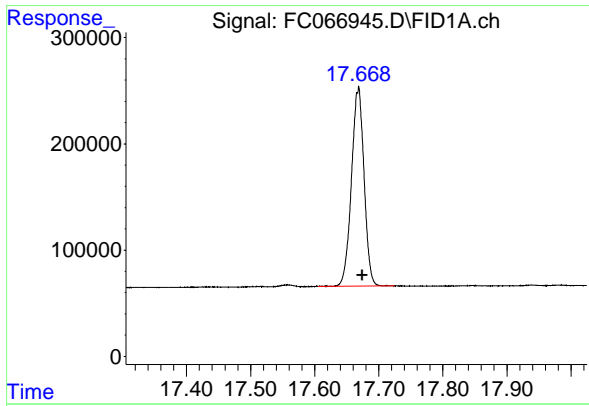
#15 n-Hexacosane (C26)

R.T.: 15.831 min
 Delta R.T.: -0.007 min
 Response: 2416422
 Conc: 18.57 ug/ml



#16 n-Octacosane (C28)

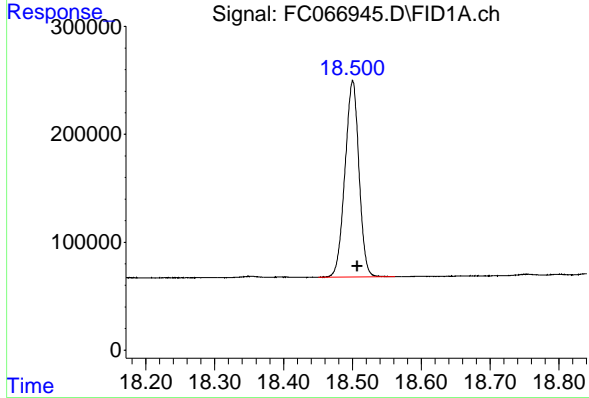
R.T.: 16.780 min
 Delta R.T.: -0.008 min
 Response: 2415357
 Conc: 19.15 ug/ml



#17 n-Tricontane (C30)

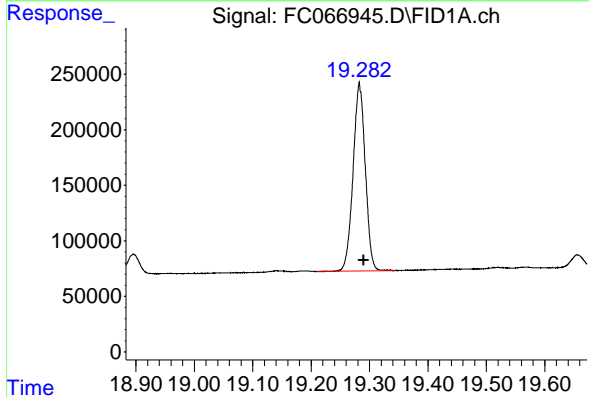
R.T.: 17.668 min
 Delta R.T.: -0.006 min
 Response: 2546852
 Conc: 19.81 ug/ml

Instrument : FID_C
 ClientSampleId : 20 PPM ALIPHATIC HC STD



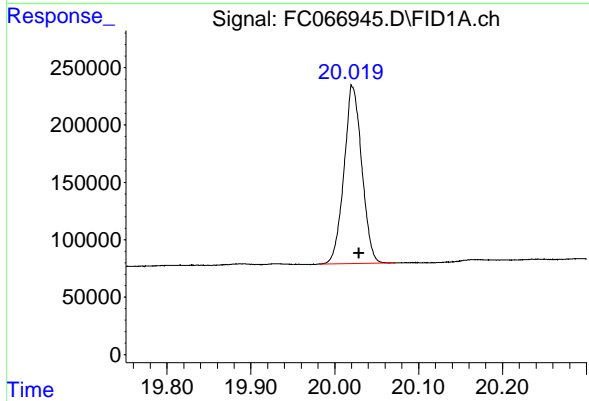
#18 n-Dotriacontane (C32)

R.T.: 18.500 min
 Delta R.T.: -0.007 min
 Response: 2572372
 Conc: 20.43 ug/ml



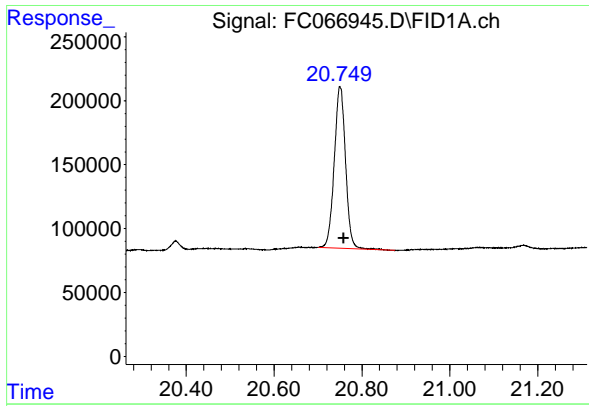
#19 n-Tetracontane (C34)

R.T.: 19.283 min
 Delta R.T.: -0.007 min
 Response: 2454346
 Conc: 19.84 ug/ml



#20 n-Hexatriacontane (C36)

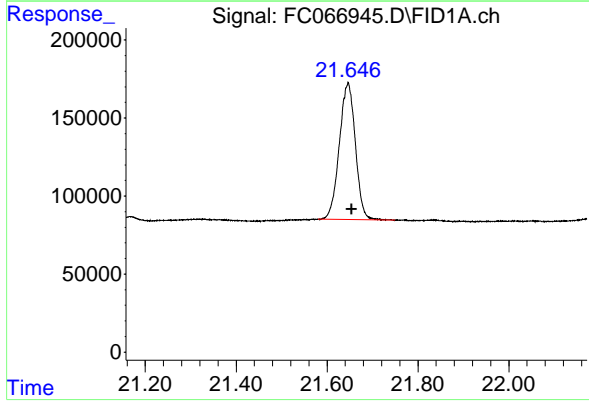
R.T.: 20.022 min
 Delta R.T.: -0.007 min
 Response: 2285071
 Conc: 19.64 ug/ml



#21 n-Octatriacontane (C38)

R.T.: 20.750 min
Delta R.T.: -0.008 min
Response: 2258704
Conc: 20.33 ug/ml

Instrument :
FID_C
ClientSampleId :
20 PPM ALIPHATIC HC STD



#22 n-Tetracontane (C40)

R.T.: 21.646 min
Delta R.T.: -0.008 min
Response: 2143395
Conc: 19.72 ug/ml