

Data Path : Z:\pestpcbsrv\HPCHEM1\FID_C\Data\FC080724AL\
 Data File : FC066968.D
 Signal(s) : FID1A.ch
 Acq On : 08 Aug 2024 05:05
 Operator : YP/AJ
 Sample : P3479-06
 Misc :
 ALS Vial : 24 Sample Multiplier: 1

Instrument :
 FID_C
 ClientSampleId :
 TS10

Integration File: autoint1.e
 Quant Time: Aug 08 06:02:04 2024
 Quant Method : Z:\pestpcbsrv\HPCHEM1\FID_C\Method\Aliphatic EPH 071524.M
 Quant Title : GC Extractables
 QLast Update : Mon Jul 15 13:58:41 2024
 Response via : Initial Calibration
 Integrator: ChemStation

Volume Inj. : 1 ul
 Signal Phase : Rxi-1ms
 Signal Info : 20M x 0.18mm x 0.18um

Compound	R.T.	Response	Conc Units

System Monitoring Compounds			
12) S 1-chlorooctadecane (S...	12.950	2119397	18.954 ug/ml
Spiked Amount	50.000	Recovery =	37.91%

Target Compounds

(f)=RT Delta > 1/2 Window

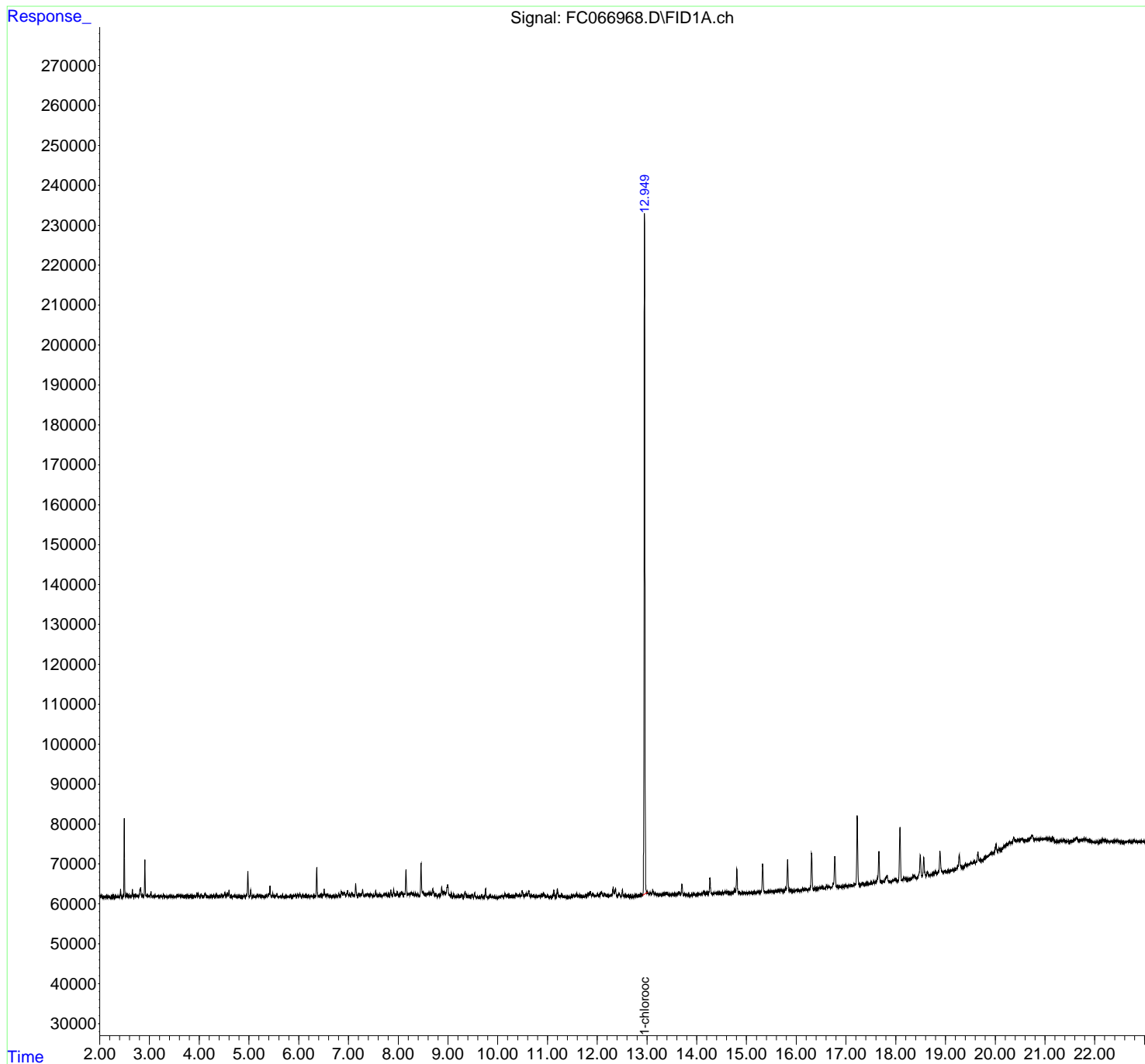
(m)=manual int.

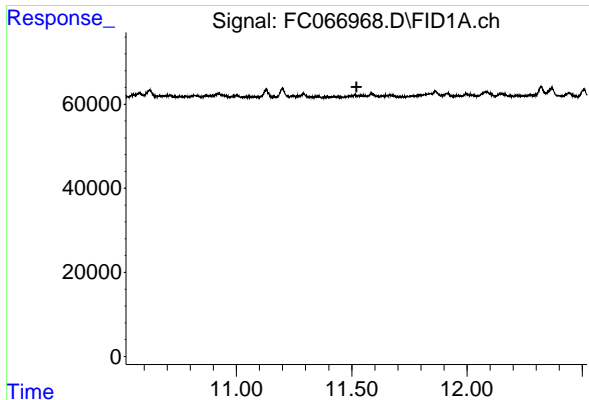
Data Path : Z:\pestpcbsrv\HPCHEM1\FID_C\Data\FC080724AL\
Data File : FC066968.D
Signal(s) : FID1A.ch
Acq On : 08 Aug 2024 05:05
Operator : YP/AJ
Sample : P3479-06
Misc :
ALS Vial : 24 Sample Multiplier: 1

Instrument :
FID_C
ClientSampleId :
TS10

Integration File: autoint1.e
Quant Time: Aug 08 06:02:04 2024
Quant Method : Z:\pestpcbsrv\HPCHEM1\FID_C\Method\Aliphatic EPH 071524.M
Quant Title : GC Extractables
QLast Update : Mon Jul 15 13:58:41 2024
Response via : Initial Calibration
Integrator: ChemStation

Volume Inj. : 1 ul
Signal Phase : Rxi-1ms
Signal Info : 20M x 0.18mm x 0.18um

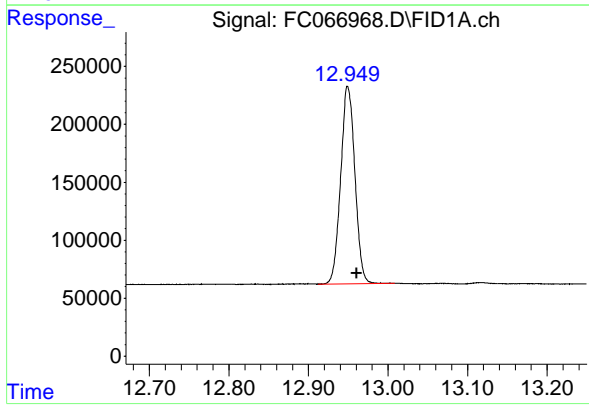




#9 ortho-Terphenyl (SURR)

R.T.: 0.000 min
 Exp R.T.: 11.521 min
 Response: 0
 Conc: N.D.

Instrument :
 FID_C
 ClientSampleId :
 TS10



#12 1-chlorooctadecane (SURR)

R.T.: 12.950 min
 Delta R.T.: -0.011 min
 Response: 2119397
 Conc: 18.95 ug/ml