

Data Path : Z:\pestpcbsrv\HPCHEM1\FID_C\Data\FC080824AL\
 Data File : FC066977.D
 Signal(s) : FID1A.ch
 Acq On : 08 Aug 2024 10:48
 Operator : YP/AJ
 Sample : P3479-08
 Misc :
 ALS Vial : 9 Sample Multiplier: 1

Instrument :
 FID_C
 ClientSampleId :

Integration File: autoint1.e
 Quant Time: Aug 09 02:47:55 2024
 Quant Method : Z:\pestpcbsrv\HPCHEM1\FID_C\Method\Aliphatic EPH 071524.M
 Quant Title : GC Extractables
 QLast Update : Mon Jul 15 13:58:41 2024
 Response via : Initial Calibration
 Integrator: ChemStation

Volume Inj. : 1 ul
 Signal Phase : Rxi-1ms
 Signal Info : 20M x 0.18mm x 0.18um

Compound	R.T.	Response	Conc Units

System Monitoring Compounds			
12) S 1-chlorooctadecane (S...	12.950	2848185	25.472 ug/ml
Spiked Amount 50.000		Recovery =	50.94%
Target Compounds			
4) T n-Dodecane (C12)	6.363	95549	0.637 ug/ml
6) T n-Tetradecane (C14)	8.157	81227	0.555 ug/ml
13) T n-Docosane (C22)	13.702	42801	0.319 ug/ml
14) T n-Tetracosane (C24)	14.804	54611	0.411 ug/ml
15) T n-Hexacosane (C26)	15.825	57916	0.445 ug/ml
16) T n-Octacosane (C28)	16.774	90391	0.717 ug/ml
17) T n-Tricontane (C30)	17.659	108090	0.841 ug/ml
18) T n-Dotriacontane (C32)	18.493	70939	0.563 ug/ml
19) T n-Tetratriacontane (C34)	19.276	75525	0.610 ug/ml

(f)=RT Delta > 1/2 Window

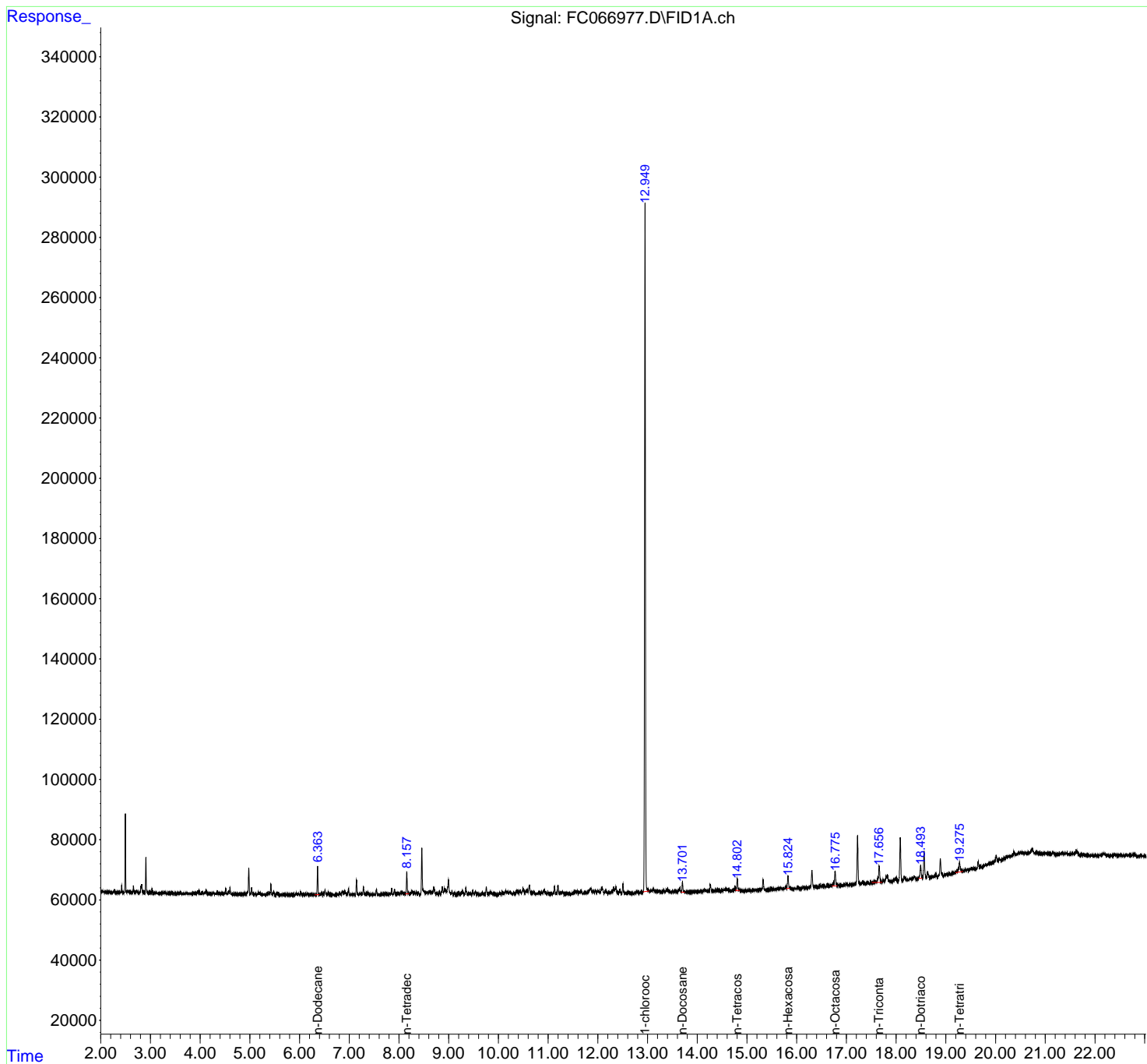
(m)=manual int.

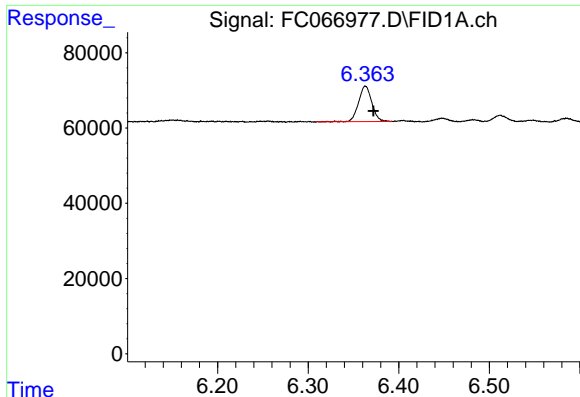
Data Path : Z:\pestpcbsrv\HPCHEM1\FID_C\Data\FC080824AL\
Data File : FC066977.D
Signal(s) : FID1A.ch
Acq On : 08 Aug 2024 10:48
Operator : YP/AJ
Sample : P3479-08
Misc :
ALS Vial : 9 Sample Multiplier: 1

Instrument :
FID_C
ClientSampleId :

Integration File: autoint1.e
Quant Time: Aug 09 02:47:55 2024
Quant Method : Z:\pestpcbsrv\HPCHEM1\FID_C\Method\Aliphatic EPH 071524.M
Quant Title : GC Extractables
QLast Update : Mon Jul 15 13:58:41 2024
Response via : Initial Calibration
Integrator: ChemStation

Volume Inj. : 1 ul
Signal Phase : Rxi-1ms
Signal Info : 20M x 0.18mm x 0.18um

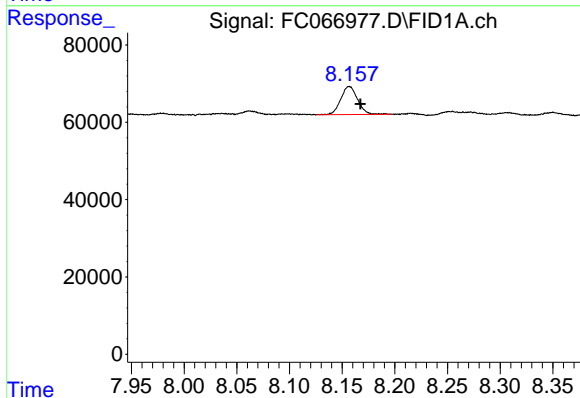




#4 n-Dodecane (C12)

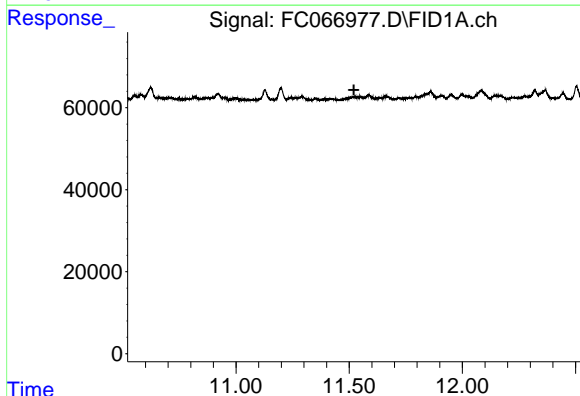
R.T.: 6.363 min
 Delta R.T.: -0.009 min
 Response: 95549
 Conc: 0.64 ug/ml

Instrument :
 FID_C
 ClientSampleId :



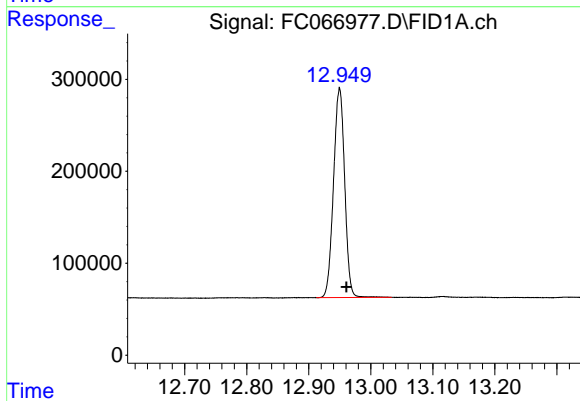
#6 n-Tetradecane (C14)

R.T.: 8.157 min
 Delta R.T.: -0.010 min
 Response: 81227
 Conc: 0.56 ug/ml



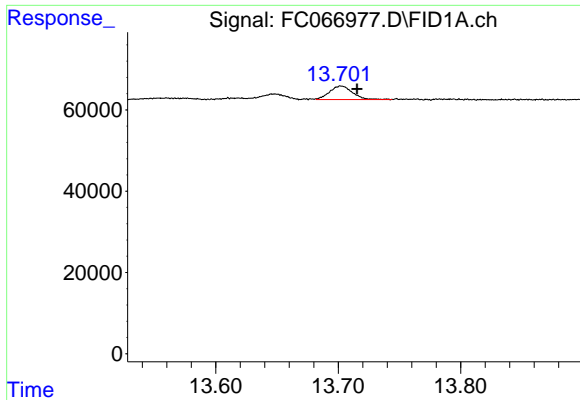
#9 ortho-Terphenyl (SURR)

R.T.: 0.000 min
 Exp R.T. : 11.521 min
 Response: 0
 Conc: N.D.



#12 1-chlorooctadecane (SURR)

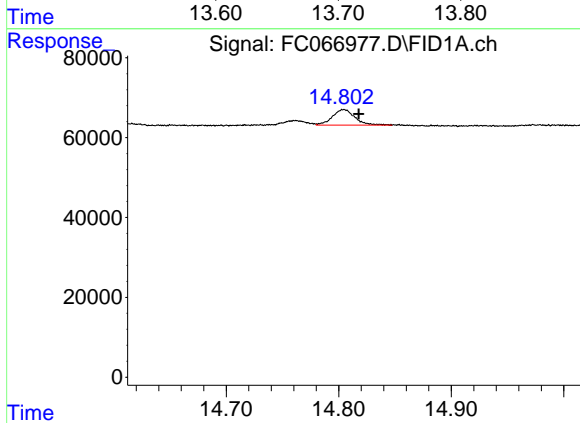
R.T.: 12.950 min
 Delta R.T.: -0.011 min
 Response: 2848185
 Conc: 25.47 ug/ml



#13 n-Docosane (C22)

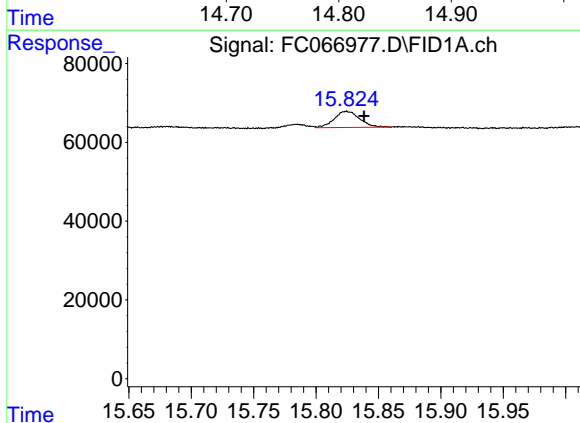
R.T.: 13.702 min
 Delta R.T.: -0.013 min
 Response: 42801
 Conc: 0.32 ug/ml

Instrument :
 FID_C
 ClientSampleId :



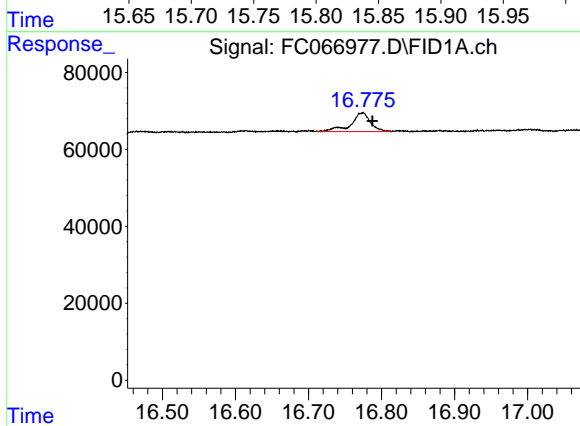
#14 n-Tetracosane (C24)

R.T.: 14.804 min
 Delta R.T.: -0.013 min
 Response: 54611
 Conc: 0.41 ug/ml



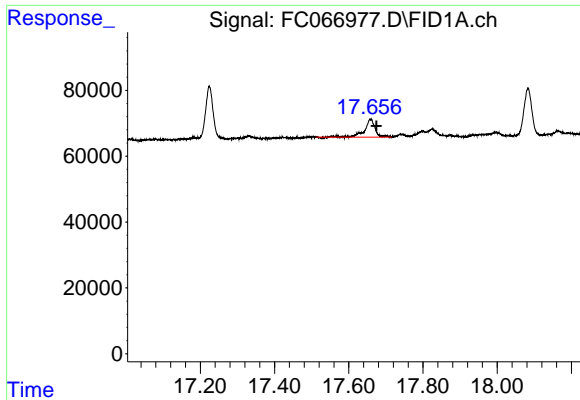
#15 n-Hexacosane (C26)

R.T.: 15.825 min
 Delta R.T.: -0.014 min
 Response: 57916
 Conc: 0.45 ug/ml



#16 n-Octacosane (C28)

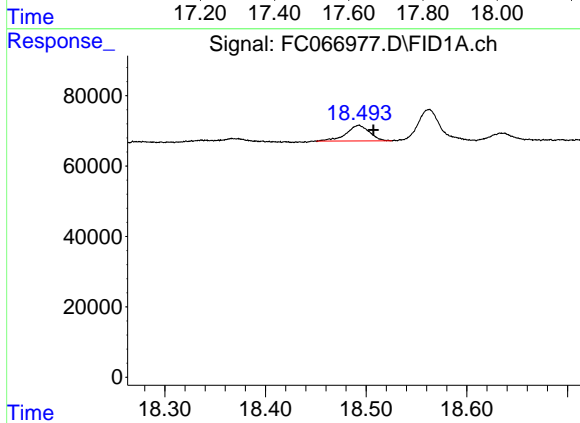
R.T.: 16.774 min
 Delta R.T.: -0.014 min
 Response: 90391
 Conc: 0.72 ug/ml



#17 n-Tricontane (C30)

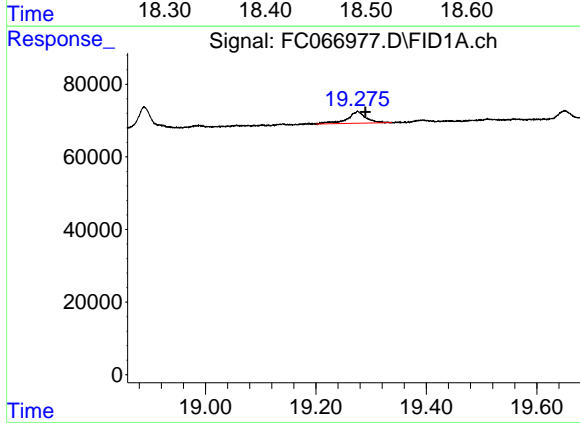
R.T.: 17.659 min
 Delta R.T.: -0.016 min
 Response: 108090
 Conc: 0.84 ug/ml

Instrument :
 FID_C
 ClientSampleId :



#18 n-Dotriacontane (C32)

R.T.: 18.493 min
 Delta R.T.: -0.015 min
 Response: 70939
 Conc: 0.56 ug/ml



#19 n-Tetratriacontane (C34)

R.T.: 19.276 min
 Delta R.T.: -0.014 min
 Response: 75525
 Conc: 0.61 ug/ml