

Data Path : Z:\pestpcbsrv\HPCHEM1\FID_C\Data\FC081022AL\
 Data File : FC061064.D
 Signal(s) : FID1A.ch
 Acq On : 11 Aug 2022 07:00
 Operator : YP/AJ
 Sample : N4122-01
 Misc :
 ALS Vial : 24 Sample Multiplier: 1

Instrument :
 FID_C
 ClientSampleId :
 RBR-200051

Integration File: autoint1.e
 Quant Time: Aug 11 08:40:26 2022
 Quant Method : Z:\pestpcbsrv\HPCHEM1\FID_C\Method\Aliphatic EPH 072522.M
 Quant Title : GC Extractables
 QLast Update : Mon Jul 25 19:40:54 2022
 Response via : Initial Calibration
 Integrator: ChemStation

Volume Inj. : 1 ul
 Signal Phase : Rxi-1ms
 Signal Info : 20M x 0.18mm x 0.18um

Compound	R.T.	Response	Conc Units

System Monitoring Compounds			
9) S ortho-Terphenyl (SURR)	10.635	6187529	37.704 ug/ml
Spiked Amount	50.000	Recovery	= 75.41%
12) S 1-chlorooctadecane (S...	11.999	4958469	37.351 ug/ml
Spiked Amount	50.000	Recovery	= 74.70%

Target Compounds

(f)=RT Delta > 1/2 Window

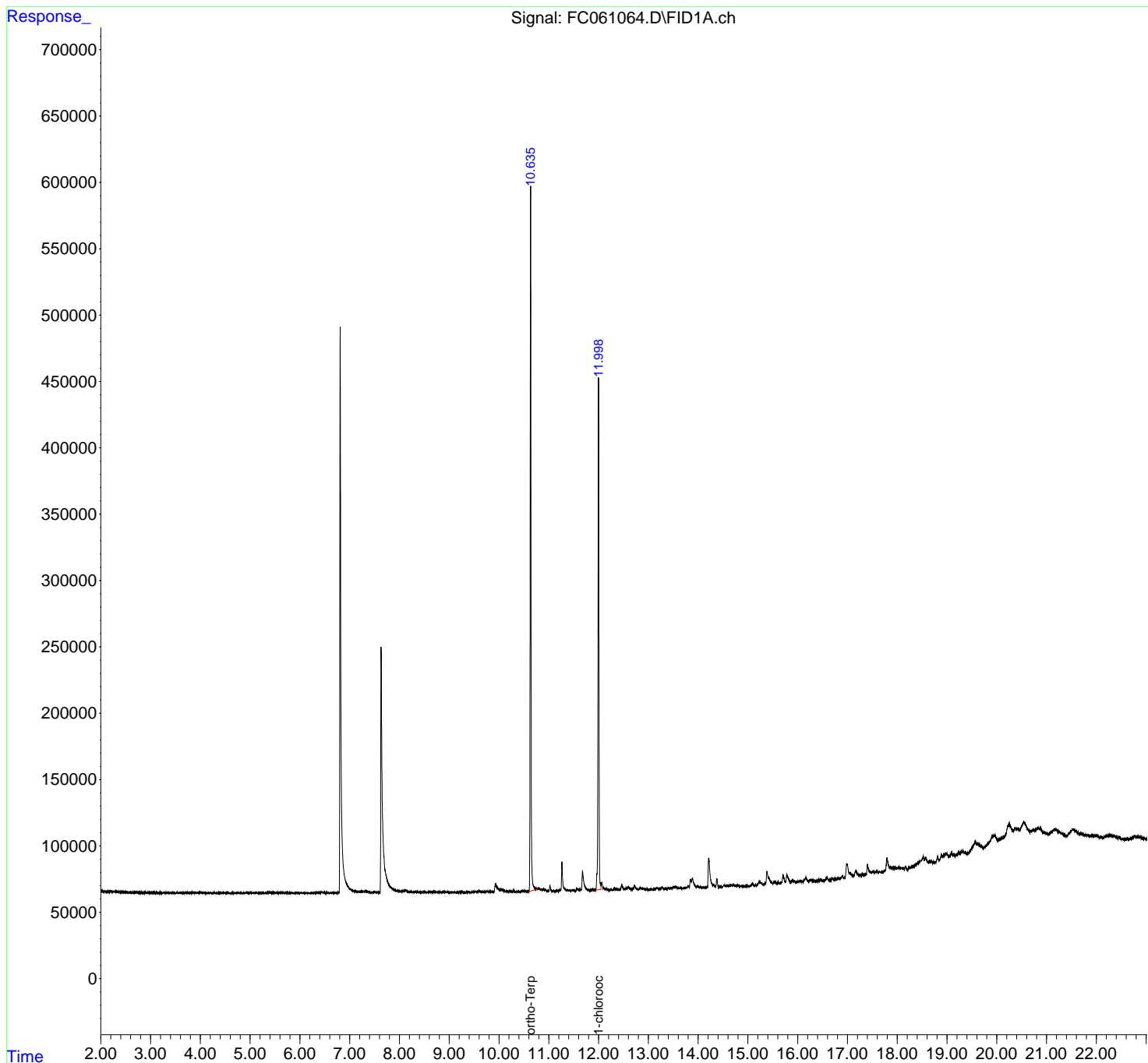
(m)=manual int.

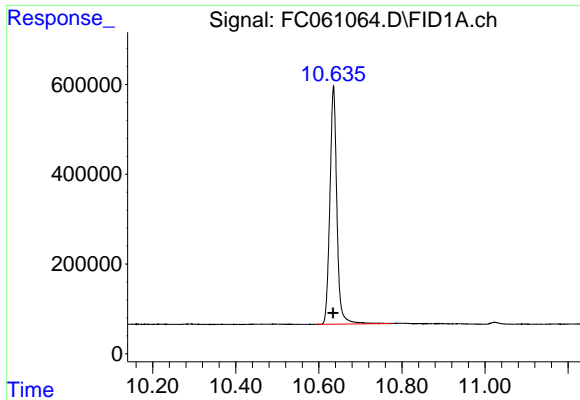
Data Path : Z:\pestpcbsrv\HPCHEM1\FID_C\Data\FC081022AL\
 Data File : FC061064.D
 Signal(s) : FID1A.ch
 Acq On : 11 Aug 2022 07:00
 Operator : YP/AJ
 Sample : N4122-01
 Misc :
 ALS Vial : 24 Sample Multiplier: 1

Instrument :
 FID_C
 ClientSampleId :
 RBR-200051

Integration File: autoint1.e
 Quant Time: Aug 11 08:40:26 2022
 Quant Method : Z:\pestpcbsrv\HPCHEM1\FID_C\Method\Aliphatic EPH 072522.M
 Quant Title : GC Extractables
 QLast Update : Mon Jul 25 19:40:54 2022
 Response via : Initial Calibration
 Integrator: ChemStation

Volume Inj. : 1 ul
 Signal Phase : Rxi-1ms
 Signal Info : 20M x 0.18mm x 0.18um

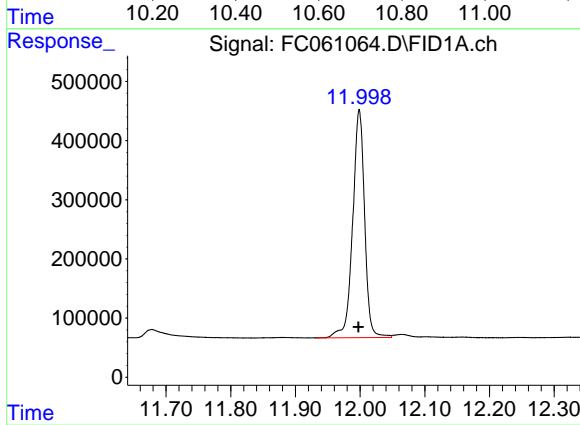




#9 ortho-Terphenyl (SURR)

R.T.: 10.635 min
Delta R.T.: 0.000 min
Response: 6187529
Conc: 37.70 ug/ml

Instrument :
FID_C
ClientSampleId :
RBR-200051



#12 1-chlorooctadecane (SURR)

R.T.: 11.999 min
Delta R.T.: 0.001 min
Response: 4958469
Conc: 37.35 ug/ml