

Data Path : Z:\pestpcbsrv\HPCHEM1\FID_C\Data\FC081319AL\
 Data File : FC042828.D
 Signal(s) : FID1A.CH
 Acq On : 12 Aug 2019 22:38
 Operator : DD\AJ
 Sample : K4238-07
 Misc :
 ALS Vial : 17 Sample Multiplier: 1

Integration File: autoint1.e
 Quant Time: Aug 13 02:35:19 2019
 Quant Method : Z:\pestpcbsrv\HPCHEM1\FID_C\Method\Alaphatic EPH 080819.M
 Quant Title : GC Extractables
 QLast Update : Thu Aug 08 16:36:10 2019
 Response via : Initial Calibration
 Integrator: ChemStation 6890 Scale Mode: Large solvent peaks clipped

Volume Inj. : 1 ul
 Signal Phase : Rxi-1ms
 Signal Info : 20M x 0.18mm x 0.18um

Compound	R.T.	Response	Conc Units

System Monitoring Compounds			
9) S ortho-Terphenyl (SURR)	11.682	4401413	30.985 ug/ml
Spiked Amount	50.000	Recovery	= 61.97%
12) S 1-chlorooctadecane (S...	13.104	3987555	33.594 ug/ml
Spiked Amount	50.000	Recovery	= 67.19%
Target Compounds			
6) T n-Tetradecane (C14)	8.399f	215573	1.690 ug/ml
14) T n-Tetracosane (C24)	14.951	443935	3.260 ug/ml
16) T n-Octacosane (C28)	16.848f	335185	2.519 ug/ml

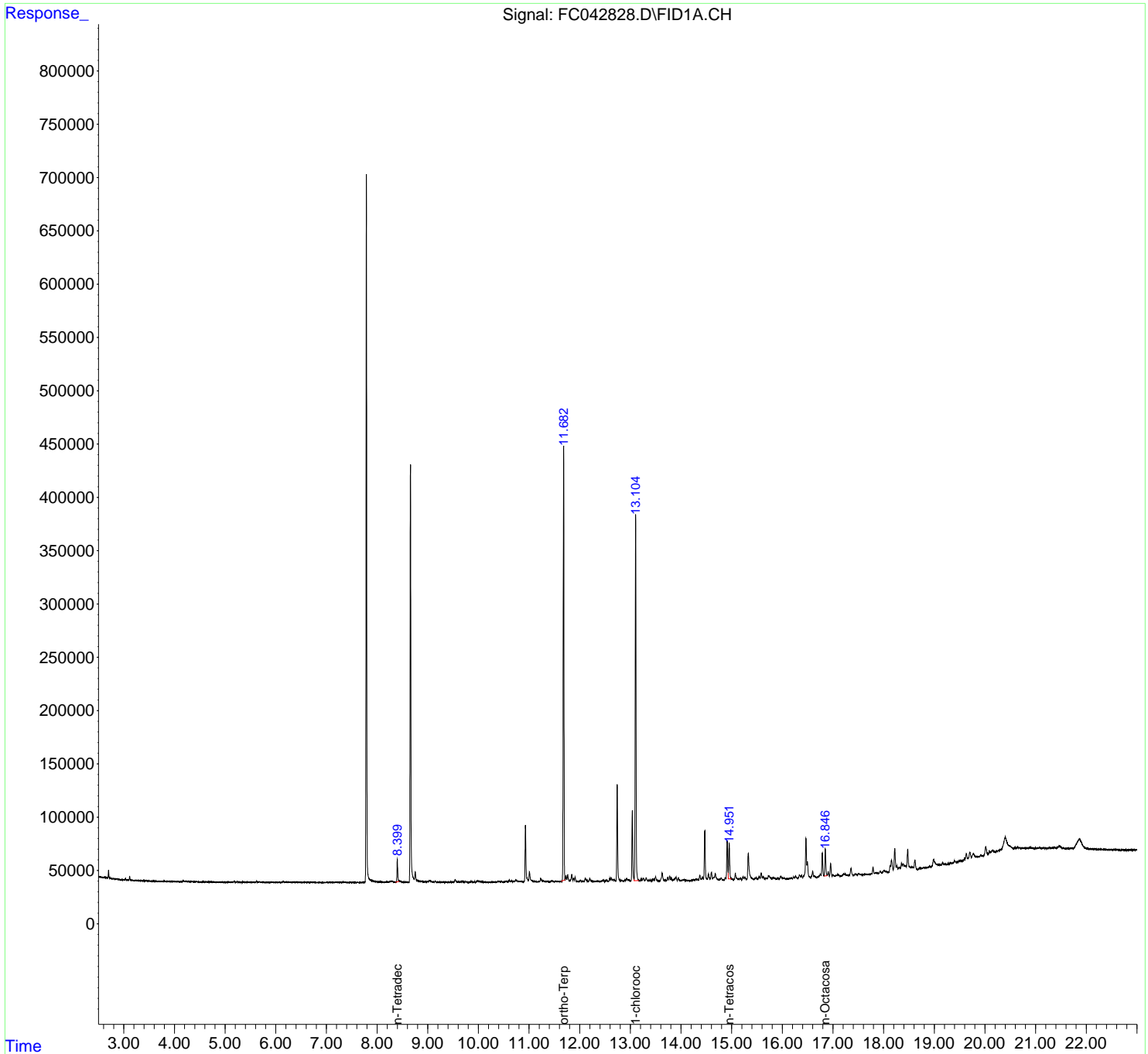
(f)=RT Delta > 1/2 Window

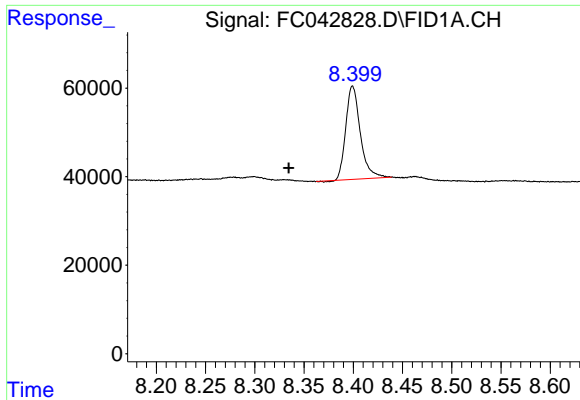
(m)=manual int.

Data Path : Z:\pestpcbsrv\HPCHEM1\FID_C\Data\FC081319AL\
Data File : FC042828.D
Signal(s) : FID1A.CH
Acq On : 12 Aug 2019 22:38
Operator : DD\AJ
Sample : K4238-07
Misc :
ALS Vial : 17 Sample Multiplier: 1

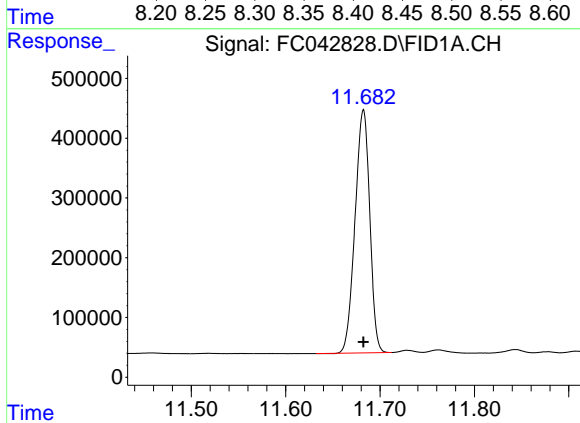
Integration File: autoint1.e
Quant Time: Aug 13 02:35:19 2019
Quant Method : Z:\pestpcbsrv\HPCHEM1\FID_C\Method\Alaphatic EPH 080819.M
Quant Title : GC Extractables
QLast Update : Thu Aug 08 16:36:10 2019
Response via : Initial Calibration
Integrator: ChemStation 6890 Scale Mode: Large solvent peaks clipped

Volume Inj. : 1 ul
Signal Phase : Rxi-1ms
Signal Info : 20M x 0.18mm x 0.18um

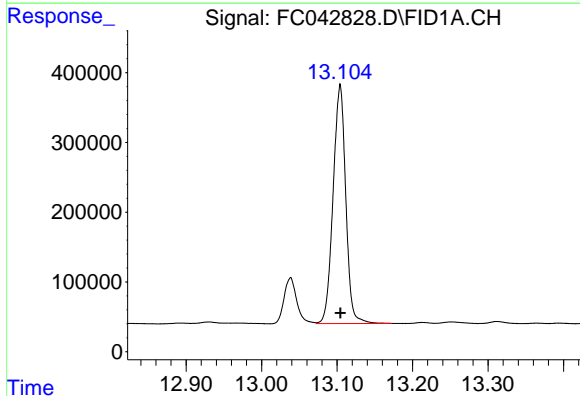




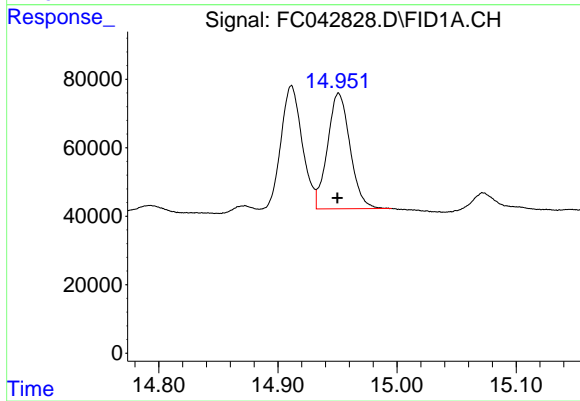
#6 n-Tetradecane (C14)
R.T.: 8.399 min
Delta R.T.: 0.065 min
Response: 215573
Conc: 1.69 ug/ml



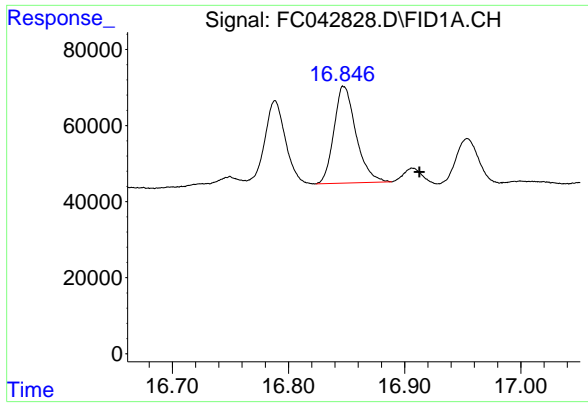
#9 ortho-Terphenyl (SURR)
R.T.: 11.682 min
Delta R.T.: 0.000 min
Response: 4401413
Conc: 30.98 ug/ml



#12 1-chlorooctadecane (SURR)
R.T.: 13.104 min
Delta R.T.: 0.000 min
Response: 3987555
Conc: 33.59 ug/ml



#14 n-Tetracosane (C24)
R.T.: 14.951 min
Delta R.T.: 0.000 min
Response: 443935
Conc: 3.26 ug/ml



#16 n-Octacosane (C28)

R.T.: 16.848 min

Delta R.T.: -0.065 min

Response: 335185

Conc: 2.52 ug/ml