

Data Path : Z:\pestpcbsrv\HPCHEM1\FID_C\Data\FC081319AL\
 Data File : FC042840.D
 Signal(s) : FID1A.CH
 Acq On : 13 Aug 2019 6:55
 Operator : DD\AJ
 Sample : K4085-03
 Misc :
 ALS Vial : 27 Sample Multiplier: 1

Integration File: autoint1.e
 Quant Time: Aug 13 08:12:46 2019
 Quant Method : Z:\pestpcbsrv\HPCHEM1\FID_C\Method\Alaphatic EPH 080819.M
 Quant Title : GC Extractables
 QLast Update : Thu Aug 08 16:36:10 2019
 Response via : Initial Calibration
 Integrator: ChemStation 6890 Scale Mode: Large solvent peaks clipped

Volume Inj. : 1 ul
 Signal Phase : Rxi-1ms
 Signal Info : 20M x 0.18mm x 0.18um

Compound	R.T.	Response	Conc Units
System Monitoring Compounds			
9) S ortho-Terphenyl (SURR)	11.684	4719281	33.223 ug/ml
Spiked Amount	50.000	Recovery =	66.45%
12) S 1-chlorooctadecane (S...	13.106	3643158	30.693 ug/ml
Spiked Amount	50.000	Recovery =	61.39%

Target Compounds

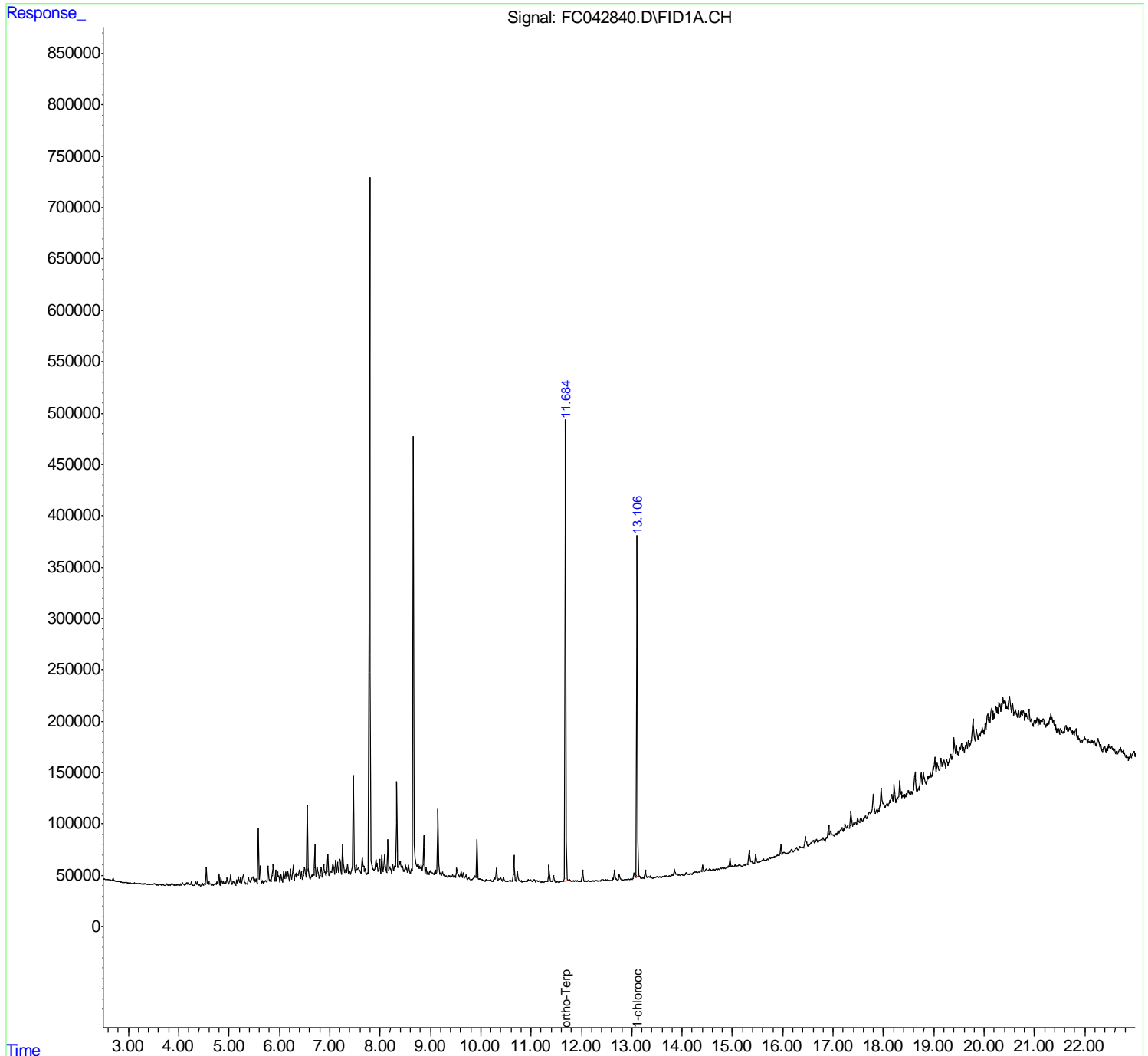
(f)=RT Delta > 1/2 Window

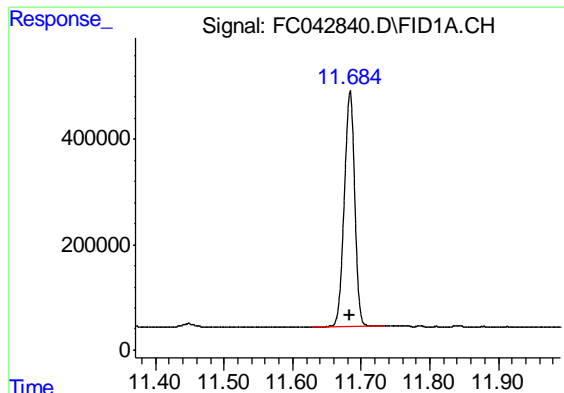
(m)=manual int.

Data Path : Z:\pestpcbsrv\HPCHEM1\FID_C\Data\FC081319AL\
 Data File : FC042840.D
 Signal(s) : FID1A.CH
 Acq On : 13 Aug 2019 6:55
 Operator : DD\AJ
 Sample : K4085-03
 Misc :
 ALS Vial : 27 Sample Multiplier: 1

Integration File: autoint1.e
 Quant Time: Aug 13 08:12:46 2019
 Quant Method : Z:\pestpcbsrv\HPCHEM1\FID_C\Method\Aliphatic EPH 080819.M
 Quant Title : GC Extractables
 QLast Update : Thu Aug 08 16:36:10 2019
 Response via : Initial Calibration
 Integrator: ChemStation 6890 Scale Mode: Large solvent peaks clipped

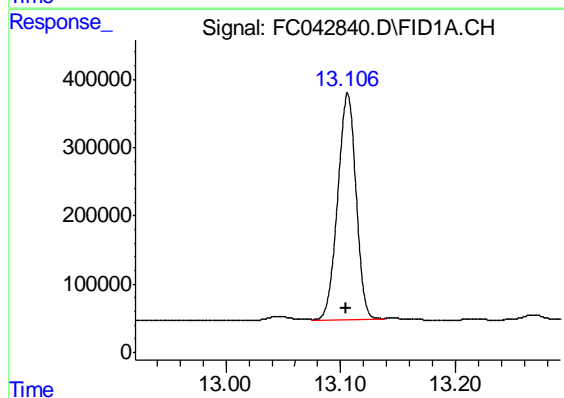
Volume Inj. : 1 ul
 Signal Phase : Rxi-1ms
 Signal Info : 20M x 0.18mm x 0.18um





#9 ortho-Terphenyl (SURR)

R.T.: 11.684 min
Delta R.T.: 0.001 min
Response: 4719281
Conc: 33.22 ug/ml



#12 1-chlorooctadecane (SURR)

R.T.: 13.106 min
Delta R.T.: 0.002 min
Response: 3643158
Conc: 30.69 ug/ml