

Data Path : Z:\pestpcbsrv\HPCHEM1\FID\_C\Data\FC081320AL\  
 Data File : FC049015.D  
 Signal(s) : FID1A.CH  
 Acq On : 14 Aug 2020 13:05  
 Operator : DD\AJ  
 Sample : 20 PPM ALIPHATIC HC STD  
 Misc :  
 ALS Vial : 2 Sample Multiplier: 1

Instrument :  
 FID\_C  
 ClientSampled :

Integration File: autoint1.e  
 Quant Time: Aug 14 13:30:45 2020  
 Quant Method : Z:\pestpcbsrv\HPCHEM1\FID\_C\Method\Aliphatic EPH 080720.M  
 Quant Title : GC Extractables  
 QLast Update : Sat Aug 08 02:38:47 2020  
 Response via : Initial Calibration  
 Integrator: ChemStation 6890 Scale Mode: Large solvent peaks clipped

Volume Inj. : 1 ul  
 Signal Phase : Rxi-1ms  
 Signal Info : 20M x 0.18mm x 0.18um

Compound	R.T.	Response	Conc Units
-----			
System Monitoring Compounds			
9) S ortho-Terphenyl (SURR)	11.677	2736366	23.031 ug/ml
Spiked Amount	50.000	Recovery	= 46.06%
12) S 1-chlorooctadecane (S...	13.110	2226464	22.887 ug/ml
Spiked Amount	50.000	Recovery	= 45.77%
Target Compounds			
1) T n-Nonane (C9)	3.408	2326131	22.303 ug/ml
2) T n-Decane (C10)	4.484	2397782	22.860 ug/ml
3) T A~Naphthalene (C11.7)	6.081	2723333	23.027 ug/ml
4) T n-Dodecane (C12)	6.509	2444397	23.046 ug/ml
5) T A~2-methylnaphthalene...	7.141	2796199	23.191 ug/ml
6) T n-Tetradecane (C14)	8.308	2445472	23.222 ug/ml
7) T n-Hexadecane (C16)	9.910	2432122	23.171 ug/ml
8) T n-Octadecane (C18)	11.354	2541467	23.134 ug/ml
10) T n-Eicosane (C20)	12.663	2565097	23.050 ug/ml
11) T n-Heneicosane (C21)	13.276	2558882	22.907 ug/ml
13) T n-Docosane (C22)	13.862	2572356	22.886 ug/ml
14) T n-Tetracosane (C24)	14.963	2579988	22.694 ug/ml
15) T n-Hexacosane (C26)	15.983	2500296	21.852 ug/ml
16) T n-Octacosane (C28)	16.932	2445712	21.022 ug/ml
17) T n-Tricontane (C30)	17.817	2354866	20.371 ug/ml
18) T n-Dotriacontane (C32)	18.648	2135214	19.748 ug/ml
19) T n-Tetratriacontane (C34)	19.429	1954457	18.844 ug/ml
20) T n-Hexatriacontane (C36)	20.168	1856815	18.675 ug/ml
21) T n-Octatriacontane (C38)	20.921	1763019	18.644 ug/ml
22) T n-Tetracontane (C40)	21.869	1807469	18.933 ug/ml
-----			

(f)=RT Delta > 1/2 Window

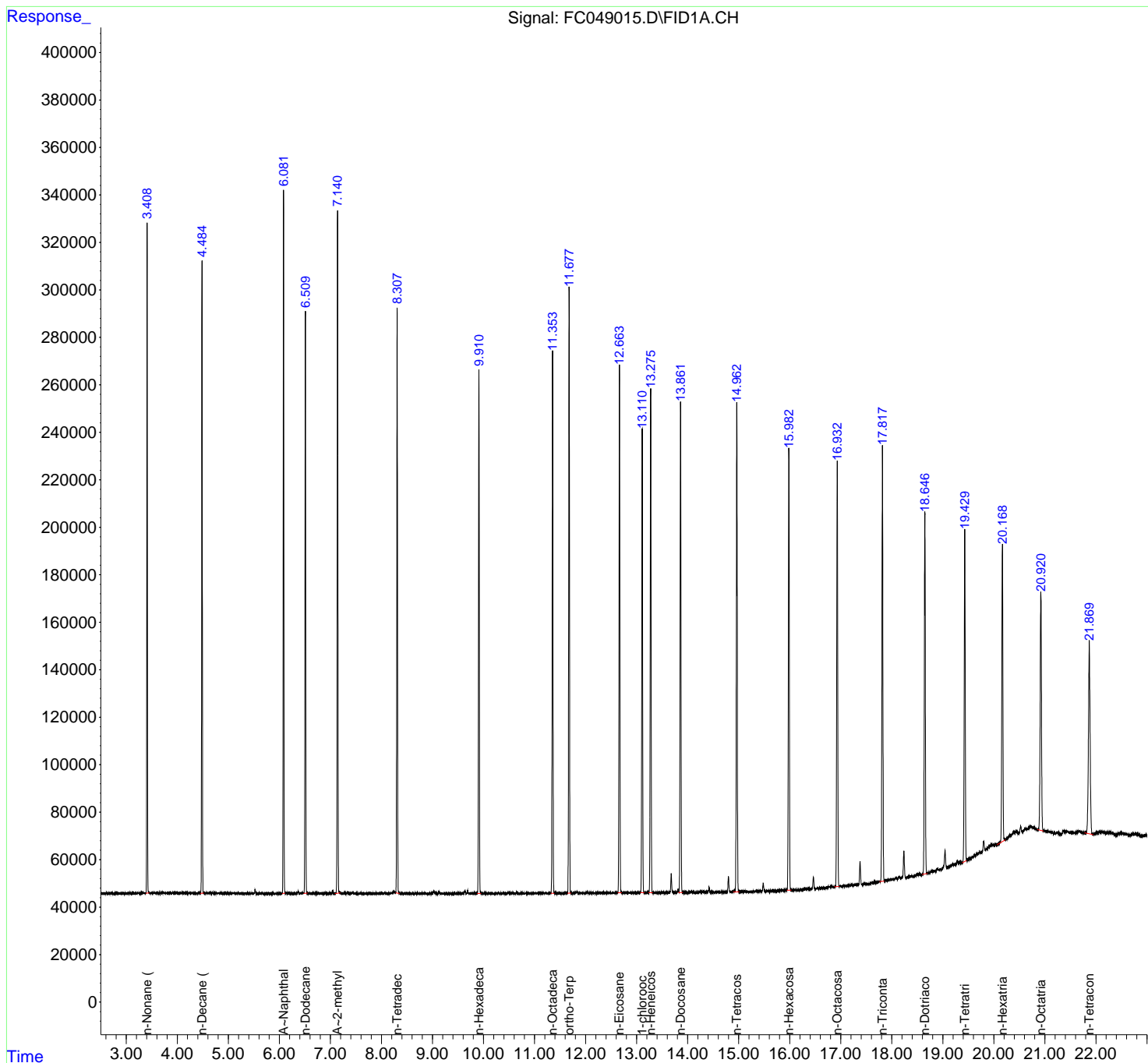
(m)=manual int.

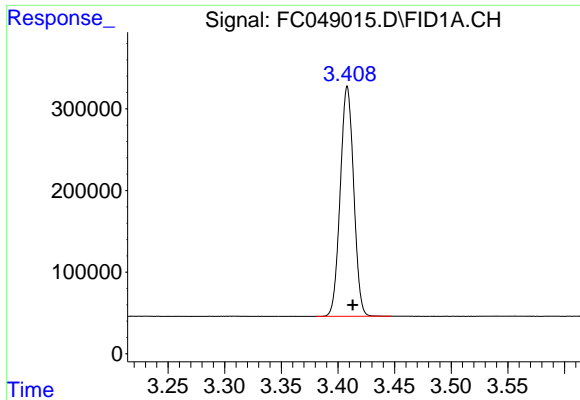
Data Path : Z:\pestpcbsrv\HPCHEM1\FID\_C\Data\FC081320AL\  
 Data File : FC049015.D  
 Signal(s) : FID1A.CH  
 Acq On : 14 Aug 2020 13:05  
 Operator : DD\AJ  
 Sample : 20 PPM ALIPHATIC HC STD  
 Misc :  
 ALS Vial : 2 Sample Multiplier: 1

Instrument :  
 FID\_C  
 ClientSampled :

Integration File: autoint1.e  
 Quant Time: Aug 14 13:30:45 2020  
 Quant Method : Z:\pestpcbsrv\HPCHEM1\FID\_C\Method\Aliphatic EPH 080720.M  
 Quant Title : GC Extractables  
 QLast Update : Sat Aug 08 02:38:47 2020  
 Response via : Initial Calibration  
 Integrator: ChemStation 6890 Scale Mode: Large solvent peaks clipped

Volume Inj. : 1 ul  
 Signal Phase : Rxi-1ms  
 Signal Info : 20M x 0.18mm x 0.18um

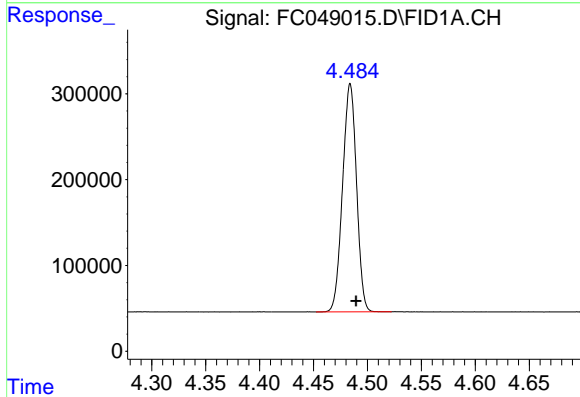




#1 n-Nonane (C9)

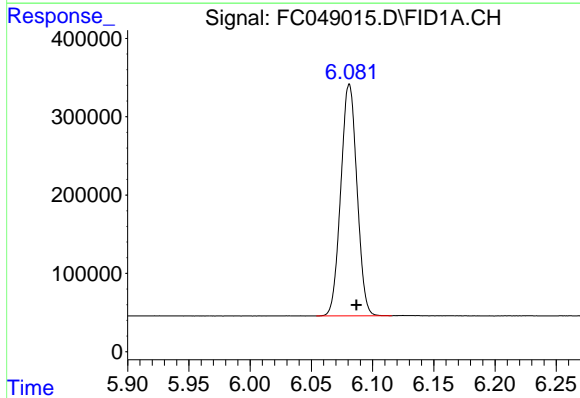
R.T.: 3.408 min  
Delta R.T.: -0.005 min  
Response: 2326131  
Conc: 22.30 ug/ml

Instrument :  
FID\_C  
ClientSampleId :



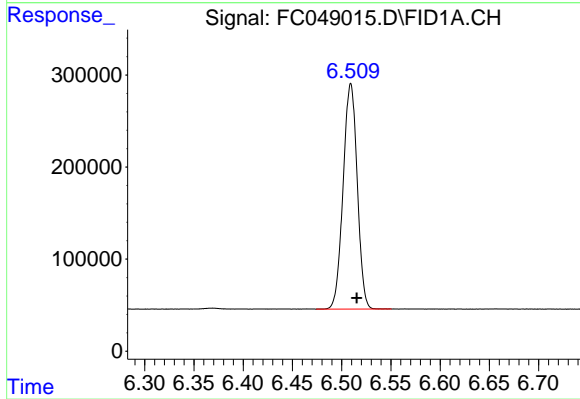
#2 n-Decane (C10)

R.T.: 4.484 min  
Delta R.T.: -0.005 min  
Response: 2397782  
Conc: 22.86 ug/ml



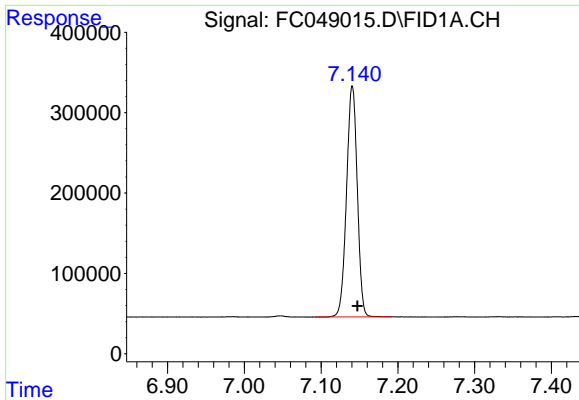
#3 A~Naphthalene (C11.7)

R.T.: 6.081 min  
Delta R.T.: -0.006 min  
Response: 2723333  
Conc: 23.03 ug/ml



#4 n-Dodecane (C12)

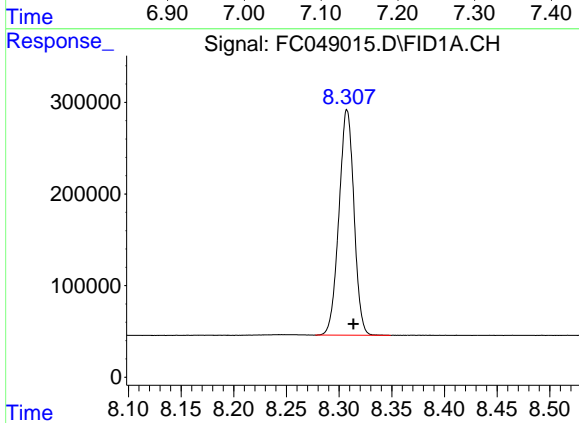
R.T.: 6.509 min  
Delta R.T.: -0.006 min  
Response: 2444397  
Conc: 23.05 ug/ml



#5 A~2-methylnaphthalene (C12.89)

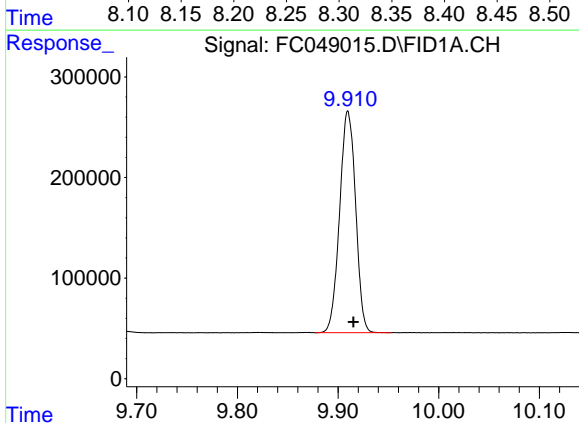
R.T.: 7.141 min  
 Delta R.T.: -0.007 min  
 Response: 2796199  
 Conc: 23.19 ug/ml

Instrument :  
 FID\_C  
 ClientSampled :



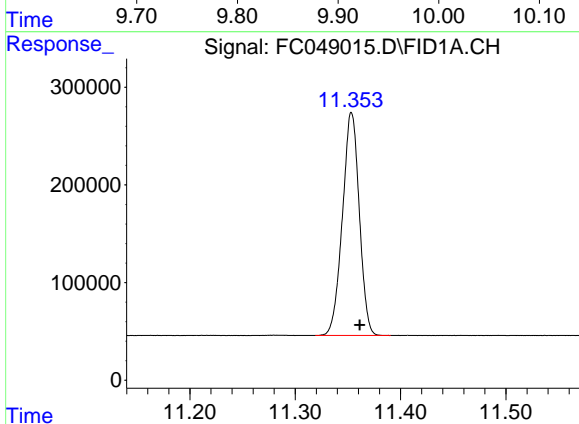
#6 n-Tetradecane (C14)

R.T.: 8.308 min  
 Delta R.T.: -0.006 min  
 Response: 2445472  
 Conc: 23.22 ug/ml



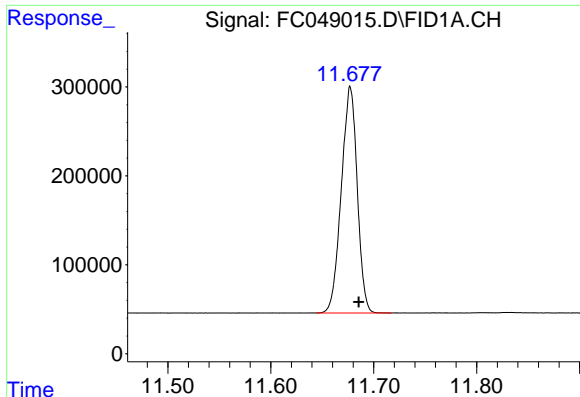
#7 n-Hexadecane (C16)

R.T.: 9.910 min  
 Delta R.T.: -0.005 min  
 Response: 2432122  
 Conc: 23.17 ug/ml



#8 n-Octadecane (C18)

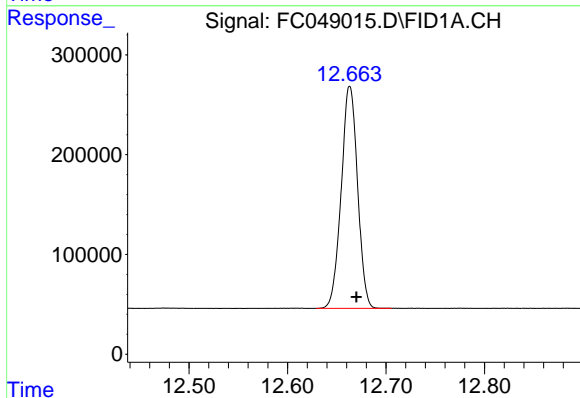
R.T.: 11.354 min  
 Delta R.T.: -0.008 min  
 Response: 2541467  
 Conc: 23.13 ug/ml



#9 ortho-Terphenyl (SURR)

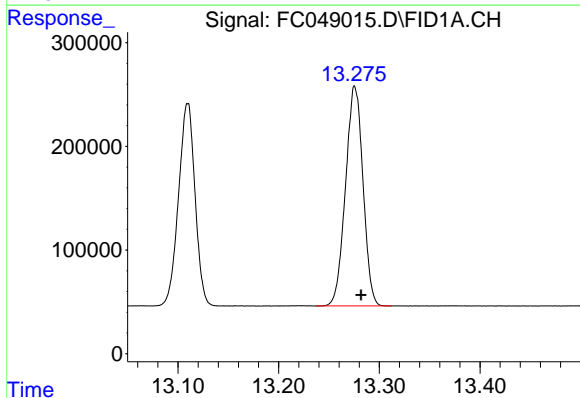
R.T.: 11.677 min  
 Delta R.T.: -0.008 min  
 Response: 2736366  
 Conc: 23.03 ug/ml

Instrument :  
 FID\_C  
 ClientSampled :



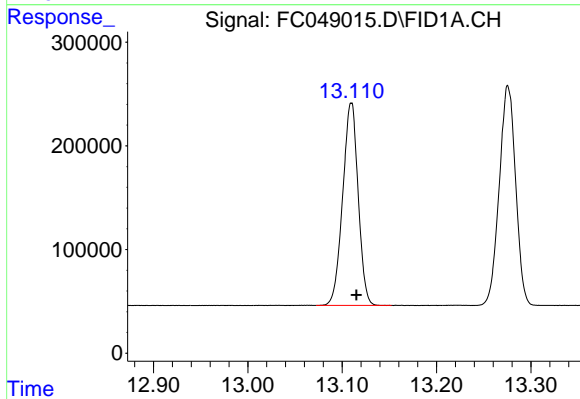
#10 n-Eicosane (C20)

R.T.: 12.663 min  
 Delta R.T.: -0.007 min  
 Response: 2565097  
 Conc: 23.05 ug/ml



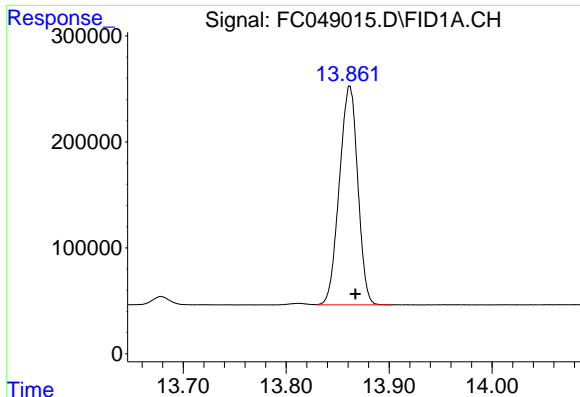
#11 n-Heneicosane (C21)

R.T.: 13.276 min  
 Delta R.T.: -0.006 min  
 Response: 2558882  
 Conc: 22.91 ug/ml



#12 1-chlorooctadecane (SURR)

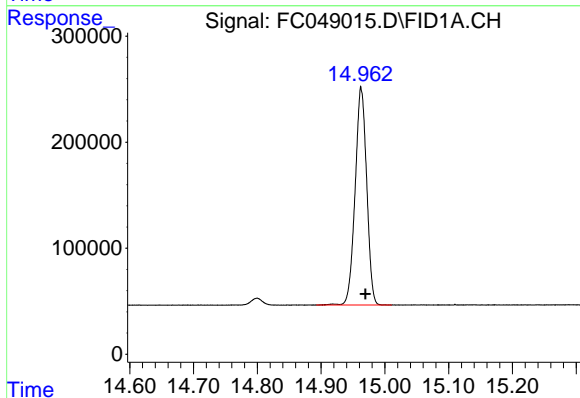
R.T.: 13.110 min  
 Delta R.T.: -0.005 min  
 Response: 2226464  
 Conc: 22.89 ug/ml



#13 n-Docosane (C22)

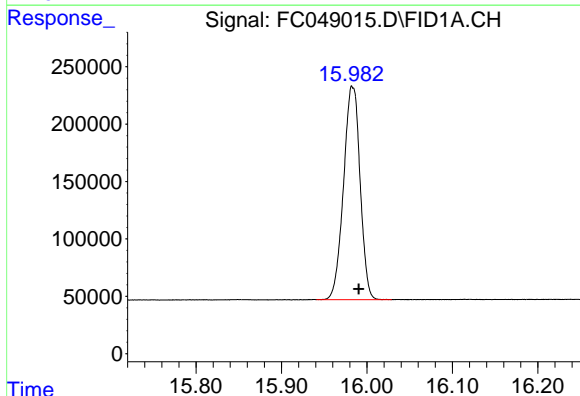
R.T.: 13.862 min  
Delta R.T.: -0.006 min  
Response: 2572356  
Conc: 22.89 ug/ml

Instrument :  
FID\_C  
ClientSampleId :



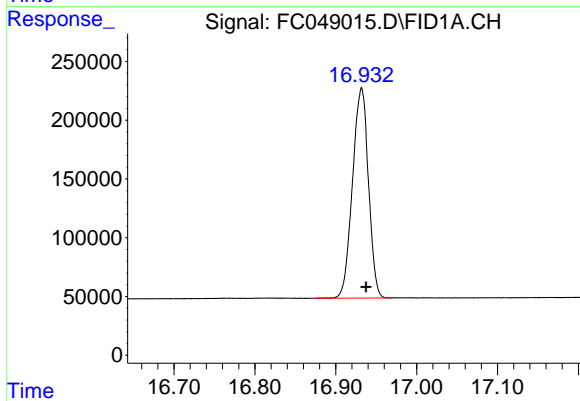
#14 n-Tetracosane (C24)

R.T.: 14.963 min  
Delta R.T.: -0.007 min  
Response: 2579988  
Conc: 22.69 ug/ml



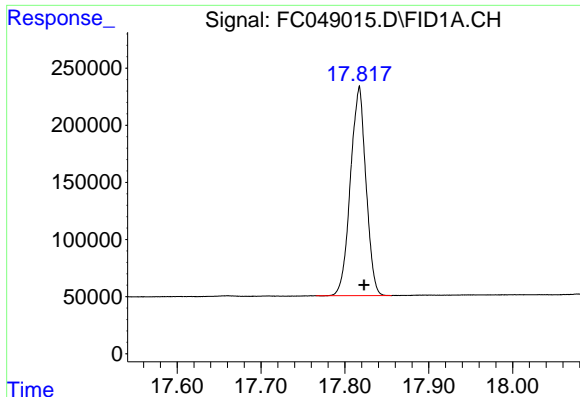
#15 n-Hexacosane (C26)

R.T.: 15.983 min  
Delta R.T.: -0.007 min  
Response: 2500296  
Conc: 21.85 ug/ml



#16 n-Octacosane (C28)

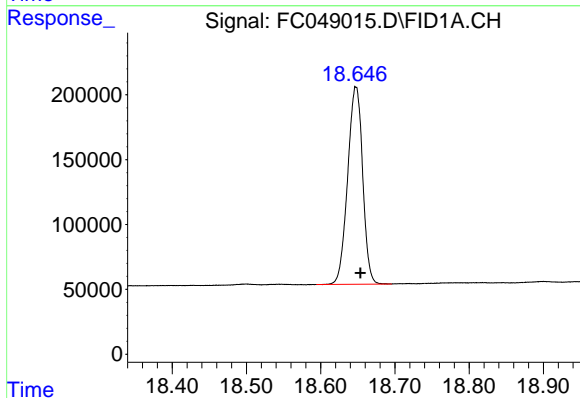
R.T.: 16.932 min  
Delta R.T.: -0.005 min  
Response: 2445712  
Conc: 21.02 ug/ml



#17 n-Tricontane (C30)

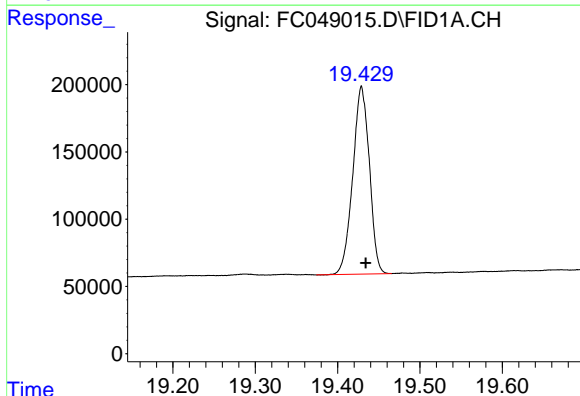
R.T.: 17.817 min  
Delta R.T.: -0.006 min  
Response: 2354866  
Conc: 20.37 ug/ml

Instrument :  
FID\_C  
ClientSampleId :



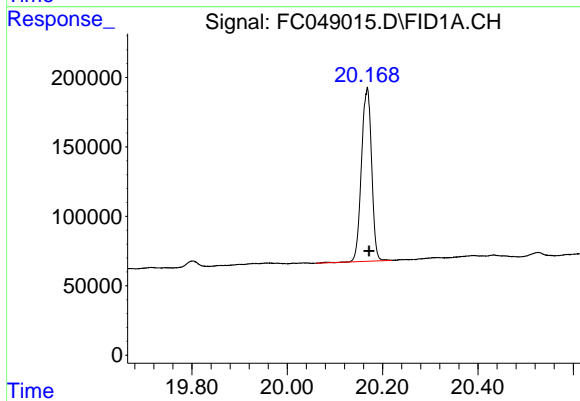
#18 n-Dotriacontane (C32)

R.T.: 18.648 min  
Delta R.T.: -0.006 min  
Response: 2135214  
Conc: 19.75 ug/ml



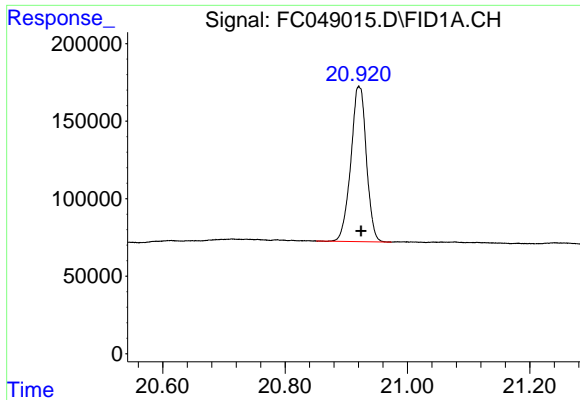
#19 n-Tetratriacontane (C34)

R.T.: 19.429 min  
Delta R.T.: -0.005 min  
Response: 1954457  
Conc: 18.84 ug/ml



#20 n-Hexatriacontane (C36)

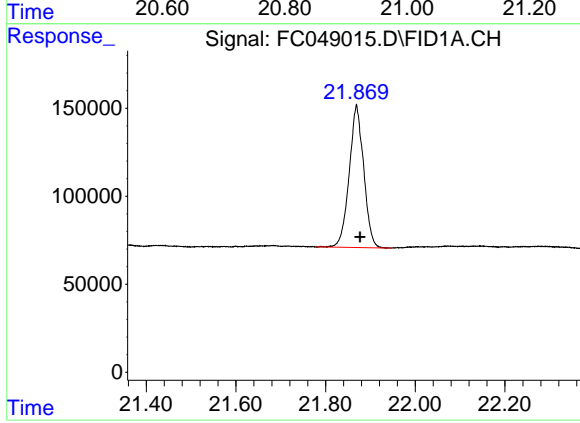
R.T.: 20.168 min  
Delta R.T.: -0.004 min  
Response: 1856815  
Conc: 18.67 ug/ml



#21 n-Octatriacontane (C38)

R.T.: 20.921 min  
Delta R.T.: -0.003 min  
Response: 1763019  
Conc: 18.64 ug/ml

Instrument :  
FID\_C  
ClientSampleId :



#22 n-Tetracontane (C40)

R.T.: 21.869 min  
Delta R.T.: -0.008 min  
Response: 1807469  
Conc: 18.93 ug/ml