

Data Path : Z:\pestpcbsrv\HPCHEM1\FID_C\Data\FC081320AL\
 Data File : FC049004.D
 Signal(s) : FID1A.CH
 Acq On : 14 Aug 2020 4:48
 Operator : DD\AJ
 Sample : L3659-07
 Misc :
 ALS Vial : 31 Sample Multiplier: 1

Instrument :
 FID_C
 ClientSampleId :
 SP1-3

Integration File: autoint1.e
 Quant Time: Aug 14 08:02:48 2020
 Quant Method : Z:\pestpcbsrv\HPCHEM1\FID_C\Method\Alaphatic EPH 080720.M
 Quant Title : GC Extractables
 QLast Update : Sat Aug 08 02:38:47 2020
 Response via : Initial Calibration
 Integrator: ChemStation 6890 Scale Mode: Large solvent peaks clipped

Volume Inj. : 1 ul
 Signal Phase : Rxi-1ms
 Signal Info : 20M x 0.18mm x 0.18um

Compound	R.T.	Response	Conc Units

System Monitoring Compounds			
9) S ortho-Terphenyl (SURR)	11.680	4760569	40.067 ug/ml
Spiked Amount	50.000	Recovery	= 80.13%
12) S 1-chlorooctadecane (S...	13.111	3856169	39.640 ug/ml
Spiked Amount	50.000	Recovery	= 79.28%

Target Compounds

(f)=RT Delta > 1/2 Window

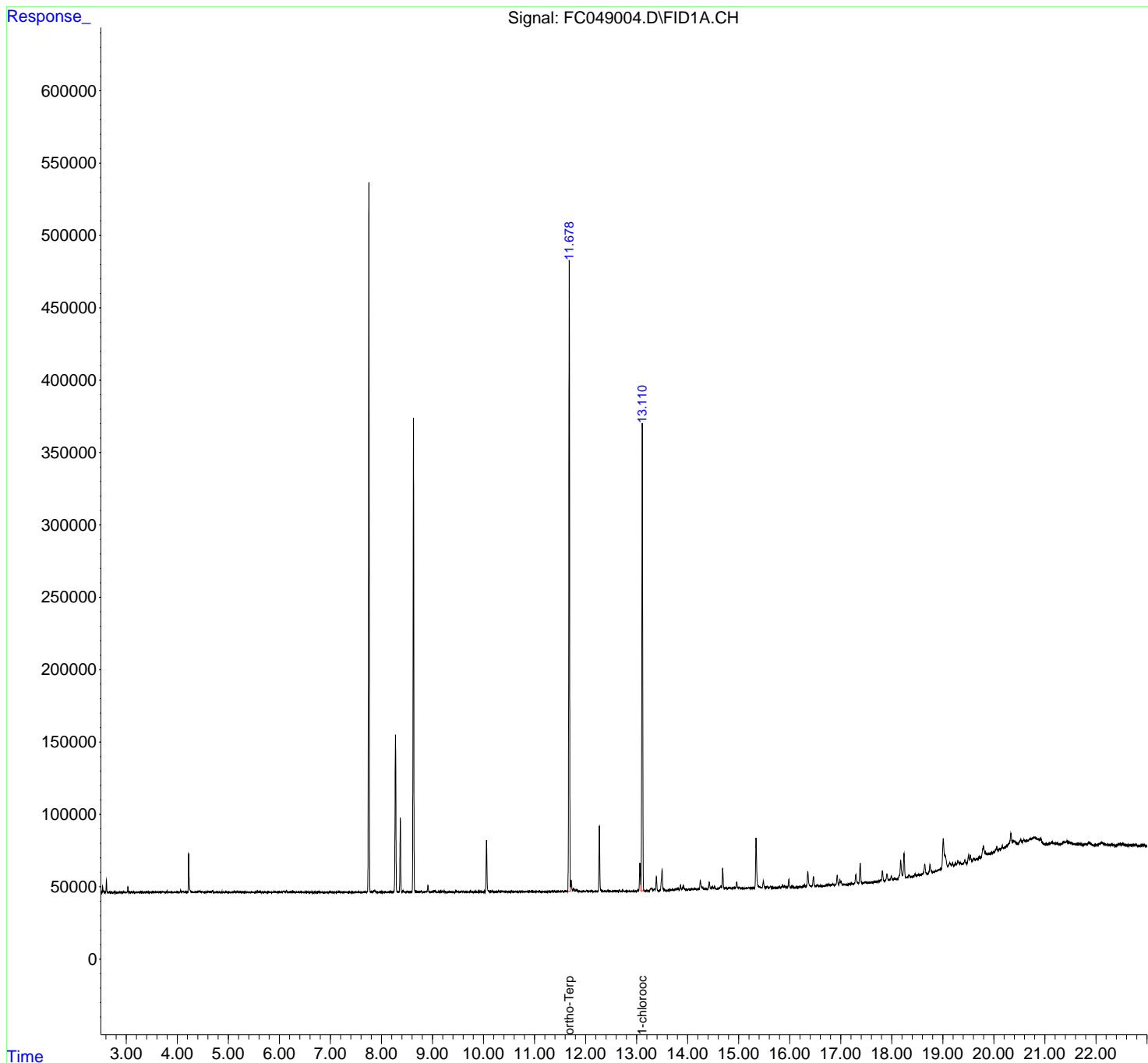
(m)=manual int.

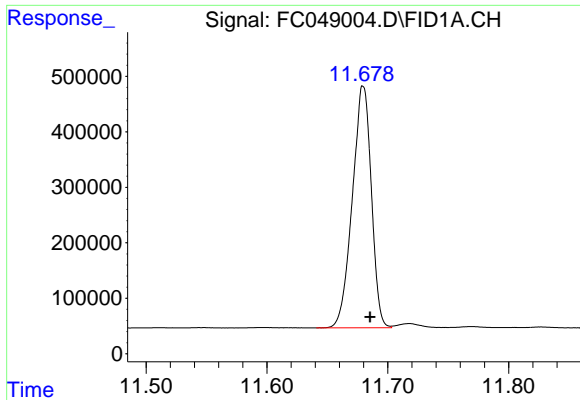
Data Path : Z:\pestpcbsrv\HPCHEM1\FID_C\Data\FC081320AL\
 Data File : FC049004.D
 Signal(s) : FID1A.CH
 Acq On : 14 Aug 2020 4:48
 Operator : DD\AJ
 Sample : L3659-07
 Misc :
 ALS Vial : 31 Sample Multiplier: 1

Instrument :
 FID_C
 ClientSampleId :
 SP1-3

Integration File: autoint1.e
 Quant Time: Aug 14 08:02:48 2020
 Quant Method : Z:\pestpcbsrv\HPCHEM1\FID_C\Method\Alaphatic EPH 080720.M
 Quant Title : GC Extractables
 QLast Update : Sat Aug 08 02:38:47 2020
 Response via : Initial Calibration
 Integrator: ChemStation 6890 Scale Mode: Large solvent peaks clipped

Volume Inj. : 1 ul
 Signal Phase : Rxi-1ms
 Signal Info : 20M x 0.18mm x 0.18um

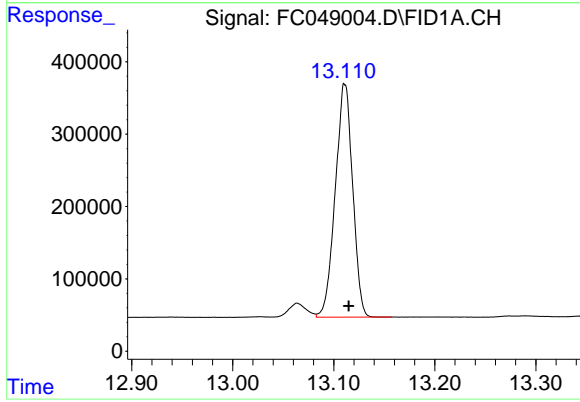




#9 ortho-Terphenyl (SURR)

R.T.: 11.680 min
Delta R.T.: -0.006 min
Response: 4760569
Conc: 40.07 ug/ml

Instrument :
FID_C
ClientSampled :
SP1-3



#12 1-chlorooctadecane (SURR)

R.T.: 13.111 min
Delta R.T.: -0.004 min
Response: 3856169
Conc: 39.64 ug/ml