

Data Path : Z:\pestpcbsrv\HPCHEM1\FID_C\Data\FC081425AL\
 Data File : FC069657.D
 Signal(s) : FID1A.ch
 Acq On : 14 Aug 2025 15:28
 Operator : YP/AJ
 Sample : PB169246BL
 Misc :
 ALS Vial : 11 Sample Multiplier: 1

Instrument :
 FID_C
 ClientSampleId :
 PB169246BL

Integration File: sample.E
 Quant Time: Aug 14 18:52:22 2025
 Quant Method : Z:\pestpcbsrv\HPCHEM1\FID_C\Method\Aliphatic EPH 080125.M
 Quant Title : GC Extractables
 QLast Update : Fri Aug 01 14:14:17 2025
 Response via : Initial Calibration
 Integrator: ChemStation

Volume Inj. : 1 ul
 Signal Phase : Rxi-1ms
 Signal Info : 20M x 0.18mm x 0.18um

Compound	R.T.	Response	Conc Units

System Monitoring Compounds			
9) S ortho-Terphenyl (SURR)	11.664	5158917	34.581 ug/ml
Spiked Amount	50.000	Recovery	= 69.16%
12) S 1-chlorooctadecane (S...	13.099	3923842	35.991 ug/ml
Spiked Amount	50.000	Recovery	= 71.98%

Target Compounds

(f)=RT Delta > 1/2 Window

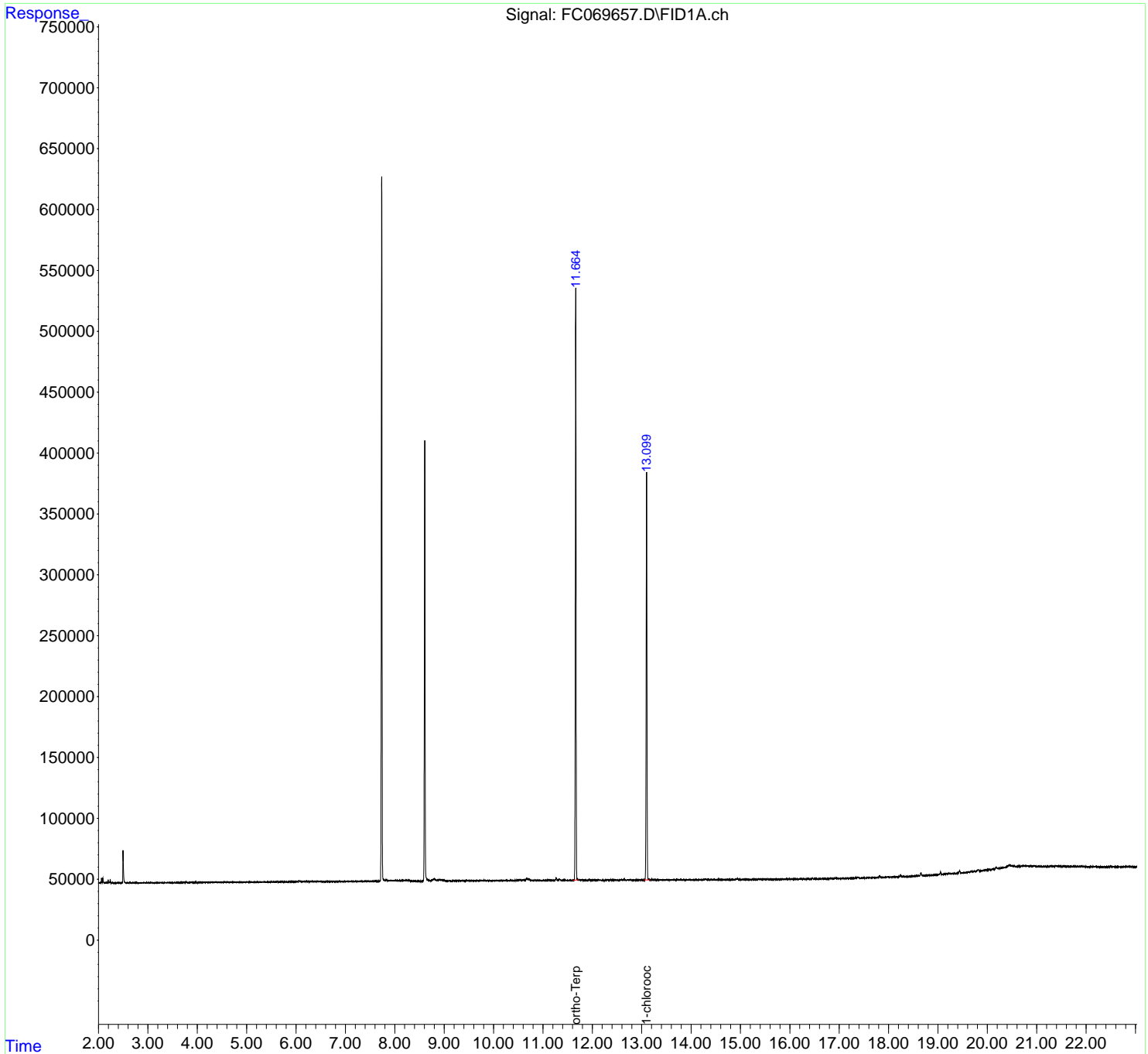
(m)=manual int.

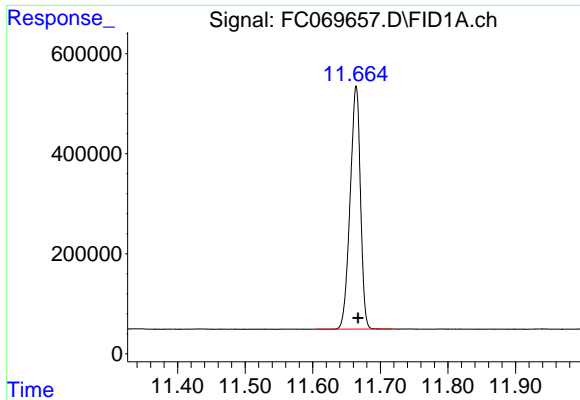
Data Path : Z:\pestpcbsrv\HPCHEM1\FID_C\Data\FC081425AL\
 Data File : FC069657.D
 Signal(s) : FID1A.ch
 Acq On : 14 Aug 2025 15:28
 Operator : YP/AJ
 Sample : PB169246BL
 Misc :
 ALS Vial : 11 Sample Multiplier: 1

Instrument :
 FID_C
 ClientSampleId :
 PB169246BL

Integration File: sample.E
 Quant Time: Aug 14 18:52:22 2025
 Quant Method : Z:\pestpcbsrv\HPCHEM1\FID_C\Method\Aliphatic EPH 080125.M
 Quant Title : GC Extractables
 QLast Update : Fri Aug 01 14:14:17 2025
 Response via : Initial Calibration
 Integrator: ChemStation

Volume Inj. : 1 ul
 Signal Phase : Rxi-1ms
 Signal Info : 20M x 0.18mm x 0.18um

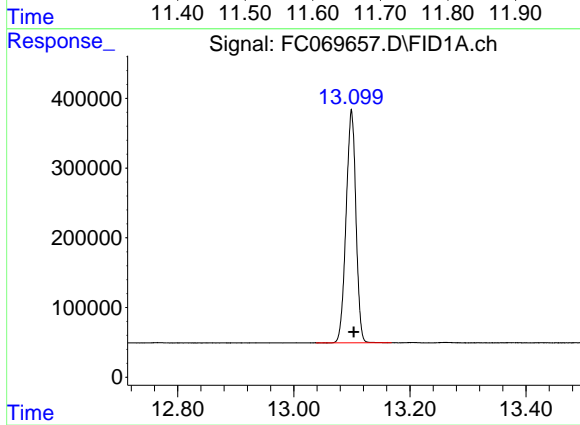




#9 ortho-Terphenyl (SURR)

R.T.: 11.664 min
Delta R.T.: -0.003 min
Response: 5158917
Conc: 34.58 ug/ml

Instrument :
FID_C
ClientSampleId :
PB169246BL



#12 1-chlorooctadecane (SURR)

R.T.: 13.099 min
Delta R.T.: -0.004 min
Response: 3923842
Conc: 35.99 ug/ml