

Data Path : Z:\pestpcbsrv\HPCHEM1\FID\_C\Data\FC081425AL\  
 Data File : FC069659.D  
 Signal(s) : FID1A.ch  
 Acq On : 14 Aug 2025 16:57  
 Operator : YP/AJ  
 Sample : PB169246BSD  
 Misc :  
 ALS Vial : 13 Sample Multiplier: 1

Instrument :  
 FID\_C  
 ClientSampleId :  
 PB169246BSD

Integration File: sample.E  
 Quant Time: Aug 14 18:53:18 2025  
 Quant Method : Z:\pestpcbsrv\HPCHEM1\FID\_C\Method\Aliphatic EPH 080125.M  
 Quant Title : GC Extractables  
 QLast Update : Fri Aug 01 14:14:17 2025  
 Response via : Initial Calibration  
 Integrator: ChemStation

Volume Inj. : 1 ul  
 Signal Phase : Rxi-1ms  
 Signal Info : 20M x 0.18mm x 0.18um

Compound	R.T.	Response	Conc Units
-----			
System Monitoring Compounds			
9) S ortho-Terphenyl (SURR)	11.665	5262011	35.272 ug/ml
Spiked Amount	50.000	Recovery	= 70.54%
12) S 1-chlorooctadecane (S...	13.100	4072398	37.353 ug/ml
Spiked Amount	50.000	Recovery	= 74.71%
Target Compounds			
1) T n-Nonane (C9)	3.403	4296944	30.160 ug/ml
2) T n-Decane (C10)	4.472	4654092	32.013 ug/ml
3) T A~Naphthalene (C11.7)	6.063	5380251	34.675 ug/ml
4) T n-Dodecane (C12)	6.493	4860126	33.246 ug/ml
5) T A~2-methylnaphthalene...	7.123	4942150	33.558 ug/ml
6) T n-Tetradecane (C14)	8.294	4775962	33.466 ug/ml
7) T n-Hexadecane (C16)	9.897	4775234	33.125 ug/ml
8) T n-Octadecane (C18)	11.342	4599353	32.524 ug/ml
10) T n-Eicosane (C20)	12.654	4538782	34.456 ug/ml
11) T n-Heneicosane (C21)	13.267	4313287	33.818 ug/ml
13) T n-Docosane (C22)	13.854	4194185	33.575 ug/ml
14) T n-Tetracosane (C24)	14.952	8080296	66.961 ug/ml
15) T n-Hexacosane (C26)	15.982	3835793	33.196 ug/ml
16) T n-Octacosane (C28)	16.933	3675997	32.795 ug/ml
17) T n-Tricontane (C30)	17.822	3622475	31.638 ug/ml
18) T n-Dotriacontane (C32)	18.656	3587824	32.299 ug/ml
19) T n-Tetratriacontane (C34)	19.441	3692461	36.263 ug/ml
20) T n-Hexatriacontane (C36)	20.182	3509669	39.361 ug/ml
21) T n-Octatriacontane (C38)	20.947	3529094	43.871 ug/ml
22) T n-Tetracontane (C40)	21.910	3422314	45.703 ug/ml
-----			

(f)=RT Delta > 1/2 Window

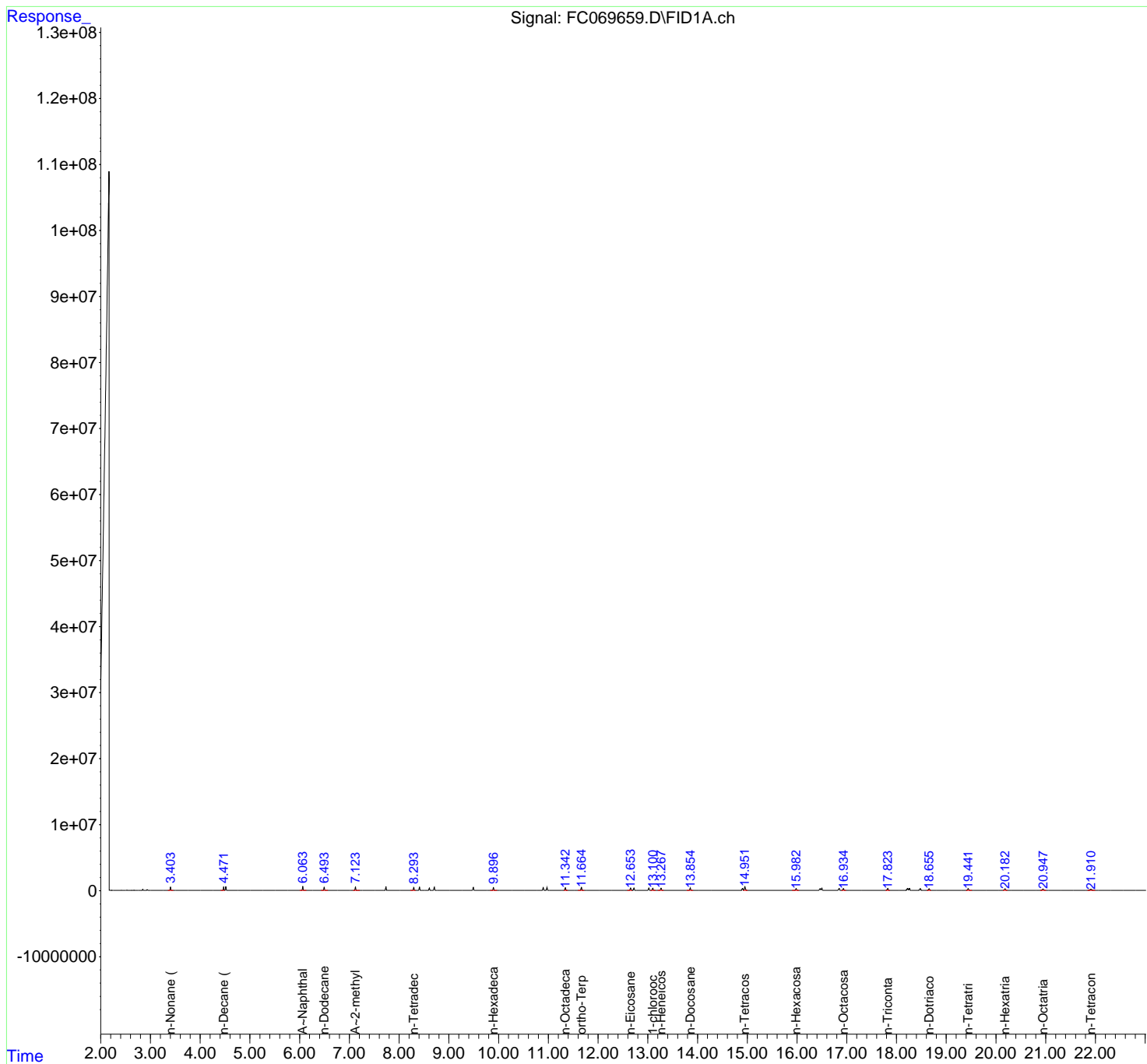
(m)=manual int.

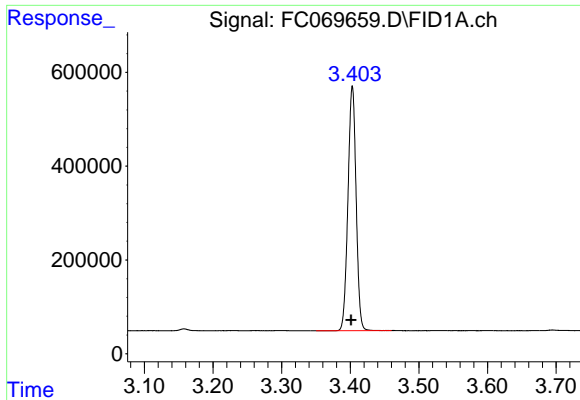
Data Path : Z:\pestpcbsrv\HPCHEM1\FID\_C\Data\FC081425AL\  
 Data File : FC069659.D  
 Signal(s) : FID1A.ch  
 Acq On : 14 Aug 2025 16:57  
 Operator : YP/AJ  
 Sample : PB169246BSD  
 Misc :  
 ALS Vial : 13 Sample Multiplier: 1

Instrument :  
 FID\_C  
 ClientSampleId :  
 PB169246BSD

Integration File: sample.E  
 Quant Time: Aug 14 18:53:18 2025  
 Quant Method : Z:\pestpcbsrv\HPCHEM1\FID\_C\Method\Aliphatic EPH 080125.M  
 Quant Title : GC Extractables  
 QLast Update : Fri Aug 01 14:14:17 2025  
 Response via : Initial Calibration  
 Integrator: ChemStation

Volume Inj. : 1 ul  
 Signal Phase : Rxi-1ms  
 Signal Info : 20M x 0.18mm x 0.18um

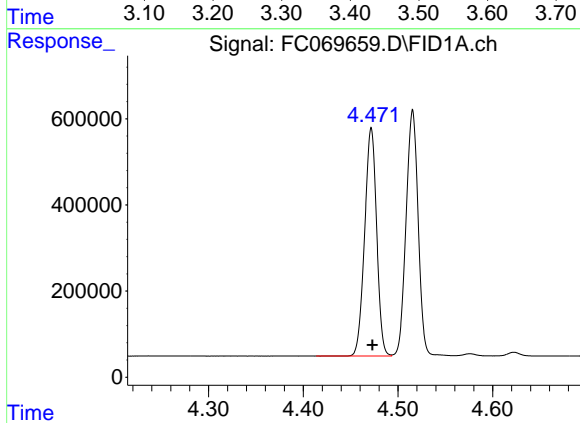




#1 n-Nonane (C9)

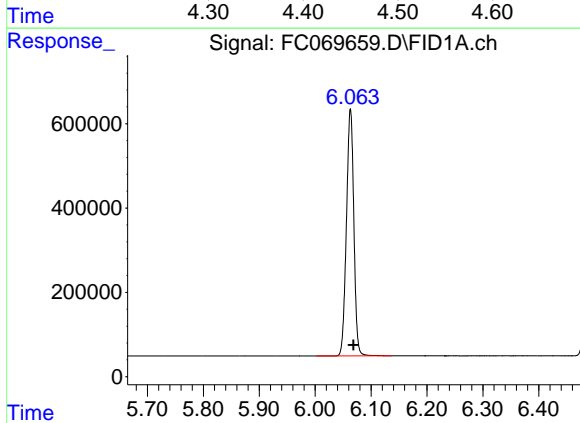
R.T.: 3.403 min  
 Delta R.T.: 0.002 min  
 Response: 4296944  
 Conc: 30.16 ug/ml

Instrument :  
 FID\_C  
 ClientSampleId :  
 PB169246BSD



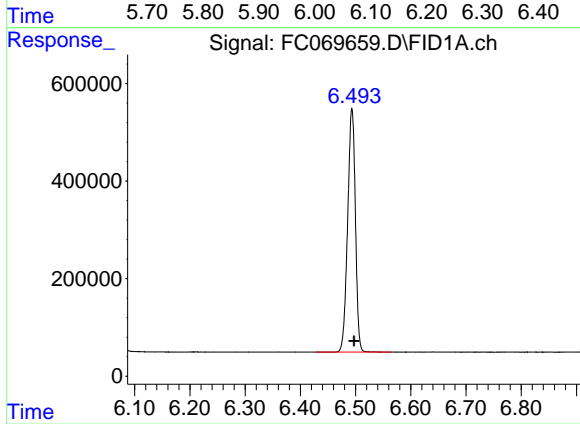
#2 n-Decane (C10)

R.T.: 4.472 min  
 Delta R.T.: -0.001 min  
 Response: 4654092  
 Conc: 32.01 ug/ml



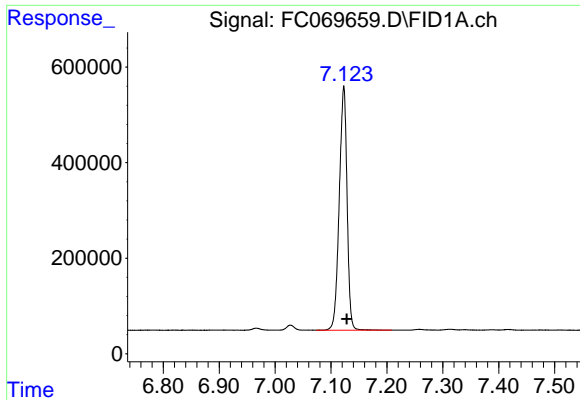
#3 A~Naphthalene (C11.7)

R.T.: 6.063 min  
 Delta R.T.: -0.005 min  
 Response: 5380251  
 Conc: 34.67 ug/ml



#4 n-Dodecane (C12)

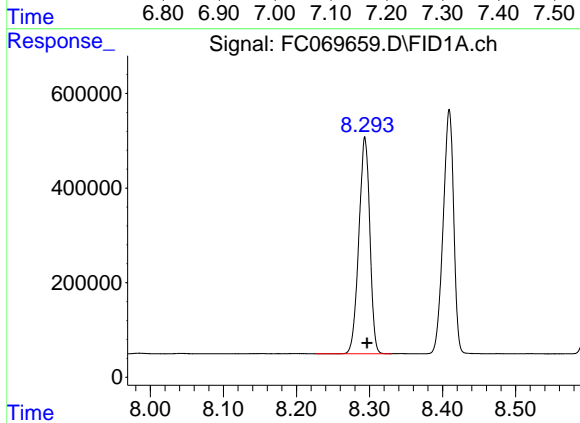
R.T.: 6.493 min  
 Delta R.T.: -0.004 min  
 Response: 4860126  
 Conc: 33.25 ug/ml



#5 A~2-methylnaphthalene (C12.89)

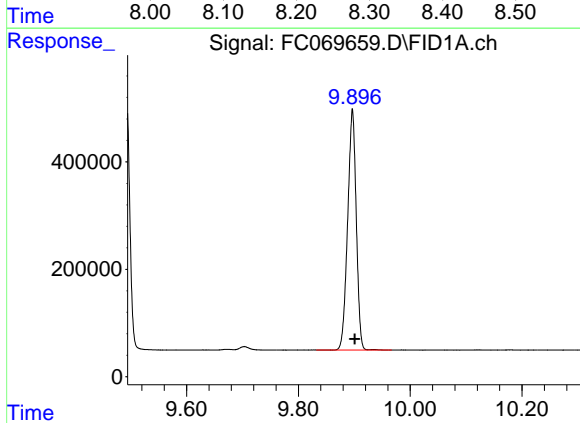
R.T.: 7.123 min  
 Delta R.T.: -0.005 min  
 Response: 4942150  
 Conc: 33.56 ug/ml

Instrument : FID\_C  
 ClientSampleId : PB169246BSD



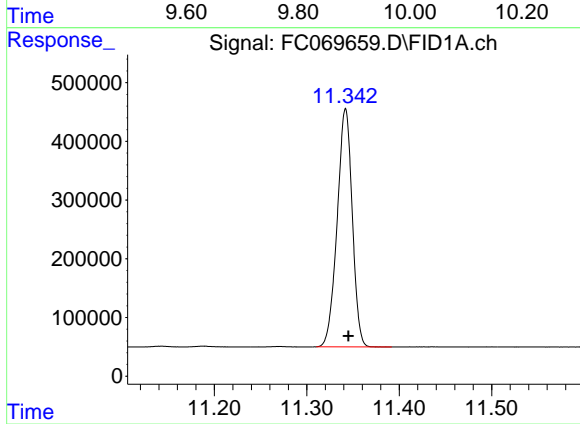
#6 n-Tetradecane (C14)

R.T.: 8.294 min  
 Delta R.T.: -0.003 min  
 Response: 4775962  
 Conc: 33.47 ug/ml



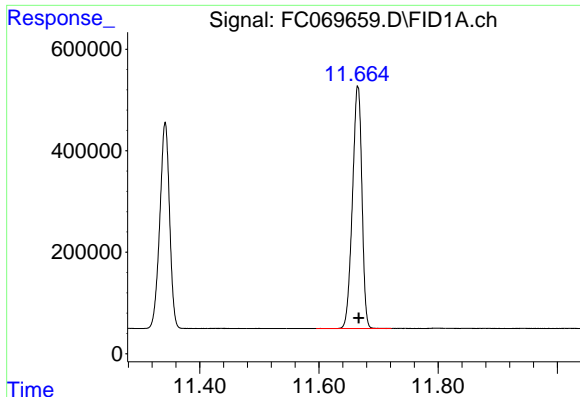
#7 n-Hexadecane (C16)

R.T.: 9.897 min  
 Delta R.T.: -0.004 min  
 Response: 4775234  
 Conc: 33.12 ug/ml



#8 n-Octadecane (C18)

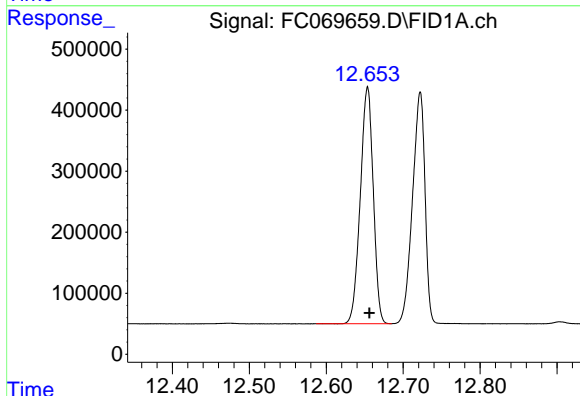
R.T.: 11.342 min  
 Delta R.T.: -0.003 min  
 Response: 4599353  
 Conc: 32.52 ug/ml



#9 ortho-Terphenyl (SURRE)

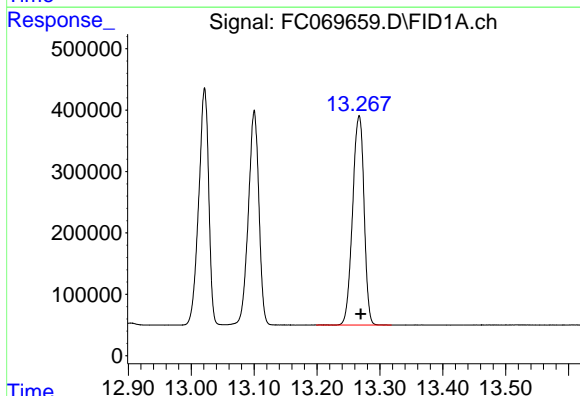
R.T.: 11.665 min  
 Delta R.T.: -0.002 min  
 Response: 5262011  
 Conc: 35.27 ug/ml

Instrument :  
 FID\_C  
 ClientSampleId :  
 PB169246BSD



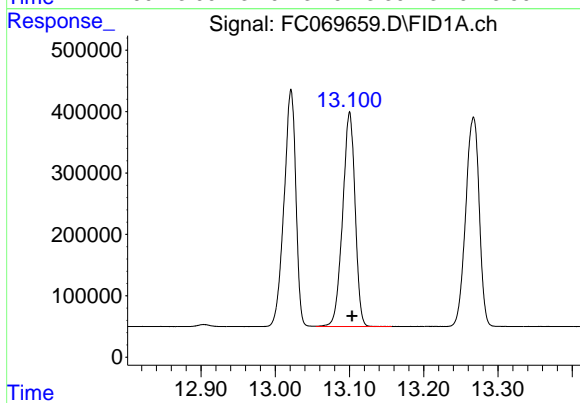
#10 n-Eicosane (C20)

R.T.: 12.654 min  
 Delta R.T.: -0.003 min  
 Response: 4538782  
 Conc: 34.46 ug/ml



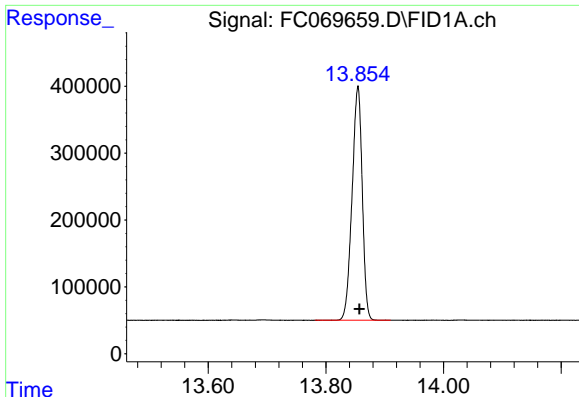
#11 n-Heneicosane (C21)

R.T.: 13.267 min  
 Delta R.T.: -0.003 min  
 Response: 4313287  
 Conc: 33.82 ug/ml



#12 1-chlorooctadecane (SURRE)

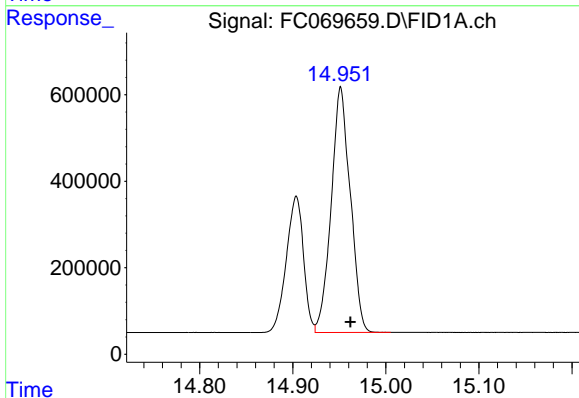
R.T.: 13.100 min  
 Delta R.T.: -0.003 min  
 Response: 4072398  
 Conc: 37.35 ug/ml



#13 n-Docosane (C22)

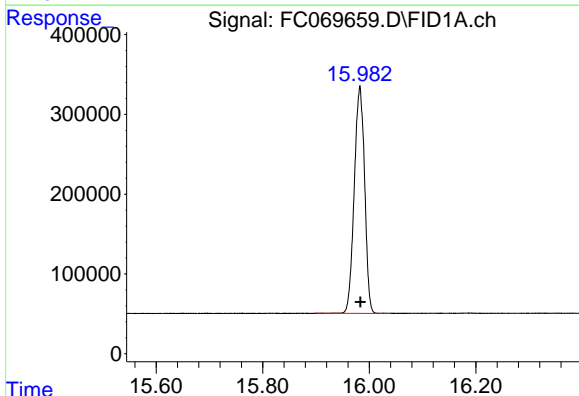
R.T.: 13.854 min  
 Delta R.T.: -0.003 min  
 Response: 4194185  
 Conc: 33.57 ug/ml

Instrument :  
 FID\_C  
 ClientSampleId :  
 PB169246BSD



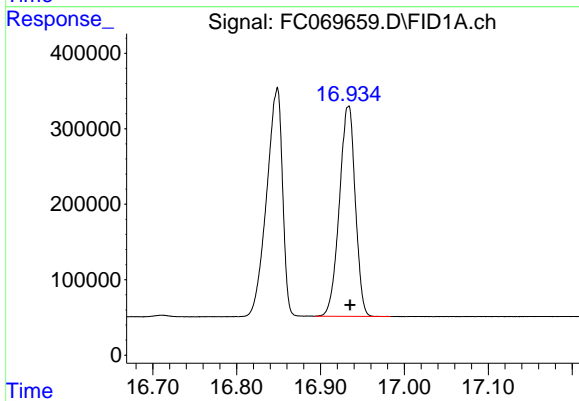
#14 n-Tetracosane (C24)

R.T.: 14.952 min  
 Delta R.T.: -0.011 min  
 Response: 8080296  
 Conc: 66.96 ug/ml



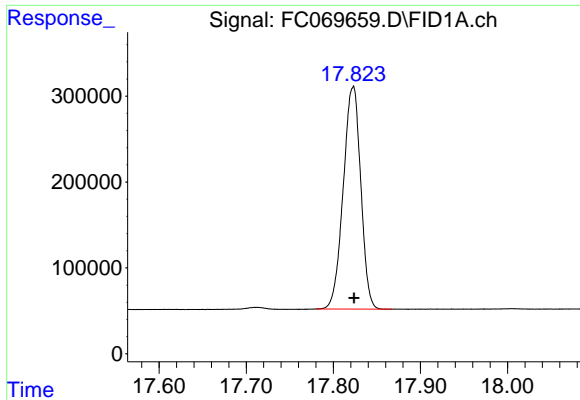
#15 n-Hexacosane (C26)

R.T.: 15.982 min  
 Delta R.T.: -0.001 min  
 Response: 3835793  
 Conc: 33.20 ug/ml



#16 n-Octacosane (C28)

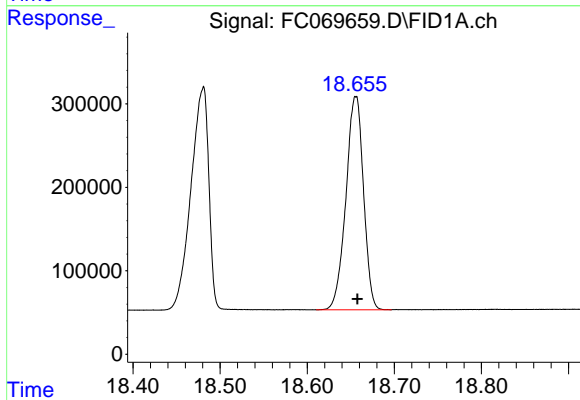
R.T.: 16.933 min  
 Delta R.T.: -0.002 min  
 Response: 3675997  
 Conc: 32.80 ug/ml



#17 n-Tricontane (C30)

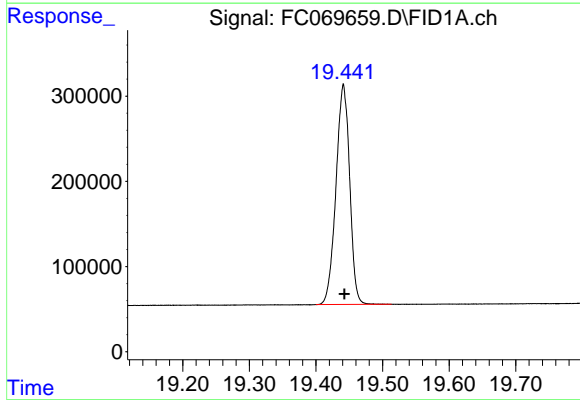
R.T.: 17.822 min  
 Delta R.T.: -0.001 min  
 Response: 3622475  
 Conc: 31.64 ug/ml

Instrument : FID\_C  
 ClientSampleId : PB169246BSD



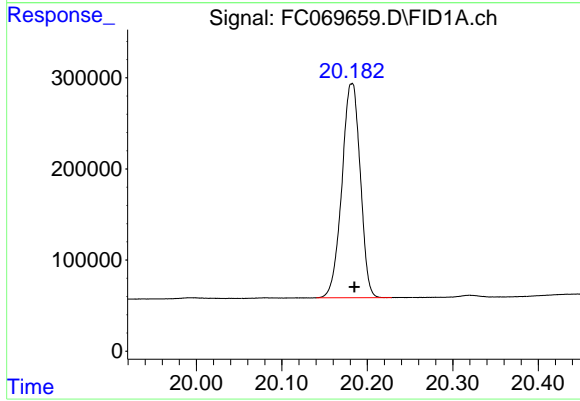
#18 n-Dotriacontane (C32)

R.T.: 18.656 min  
 Delta R.T.: -0.002 min  
 Response: 3587824  
 Conc: 32.30 ug/ml



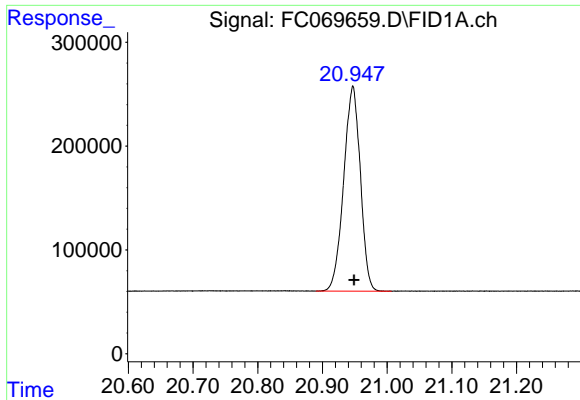
#19 n-Tetratriacontane (C34)

R.T.: 19.441 min  
 Delta R.T.: -0.001 min  
 Response: 3692461  
 Conc: 36.26 ug/ml



#20 n-Hexatriacontane (C36)

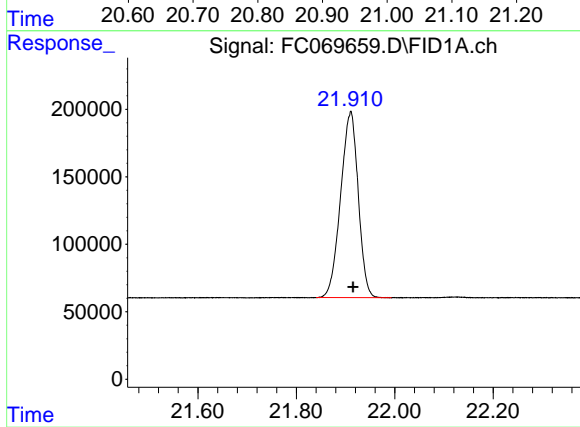
R.T.: 20.182 min  
 Delta R.T.: -0.003 min  
 Response: 3509669  
 Conc: 39.36 ug/ml



#21 n-Octatriacontane (C38)

R.T.: 20.947 min  
 Delta R.T.: -0.002 min  
 Response: 3529094  
 Conc: 43.87 ug/ml

Instrument : FID\_C  
 ClientSampleId : PB169246BSD



#22 n-Tetracontane (C40)

R.T.: 21.910 min  
 Delta R.T.: -0.005 min  
 Response: 3422314  
 Conc: 45.70 ug/ml