

Data Path : Z:\pestpcbsrv\HPCHEM1\FID\_C\Data\FC081425AL\  
 Data File : FC069664.D  
 Signal(s) : FID1A.ch  
 Acq On : 14 Aug 2025 20:51  
 Operator : YP/AJ  
 Sample : Q2858-02  
 Misc :  
 ALS Vial : 18 Sample Multiplier: 1

**Instrument :**  
 FID\_C  
**ClientSampleId :**  
 VNJ 216-EPH-2

Integration File: sample.E  
 Quant Time: Aug 15 11:05:06 2025  
 Quant Method : Z:\pestpcbsrv\HPCHEM1\FID\_C\Method\Aliphatic EPH 080125.M  
 Quant Title : GC Extractables  
 QLast Update : Fri Aug 01 14:14:17 2025  
 Response via : Initial Calibration  
 Integrator: ChemStation

Volume Inj. : 1 ul  
 Signal Phase : Rxi-1ms  
 Signal Info : 20M x 0.18mm x 0.18um

| Compound                       | R.T.   | Response | Conc Units   |
|--------------------------------|--------|----------|--------------|
| -----                          |        |          |              |
| System Monitoring Compounds    |        |          |              |
| 9) S ortho-Terphenyl (SURR)    | 11.662 | 3741210  | 25.078 ug/ml |
| Spiked Amount                  | 50.000 | Recovery | = 50.16%     |
| 12) S 1-chlorooctadecane (S... | 13.099 | 3751975  | 34.414 ug/ml |
| Spiked Amount                  | 50.000 | Recovery | = 68.83%     |

Target Compounds

-----

(f)=RT Delta > 1/2 Window

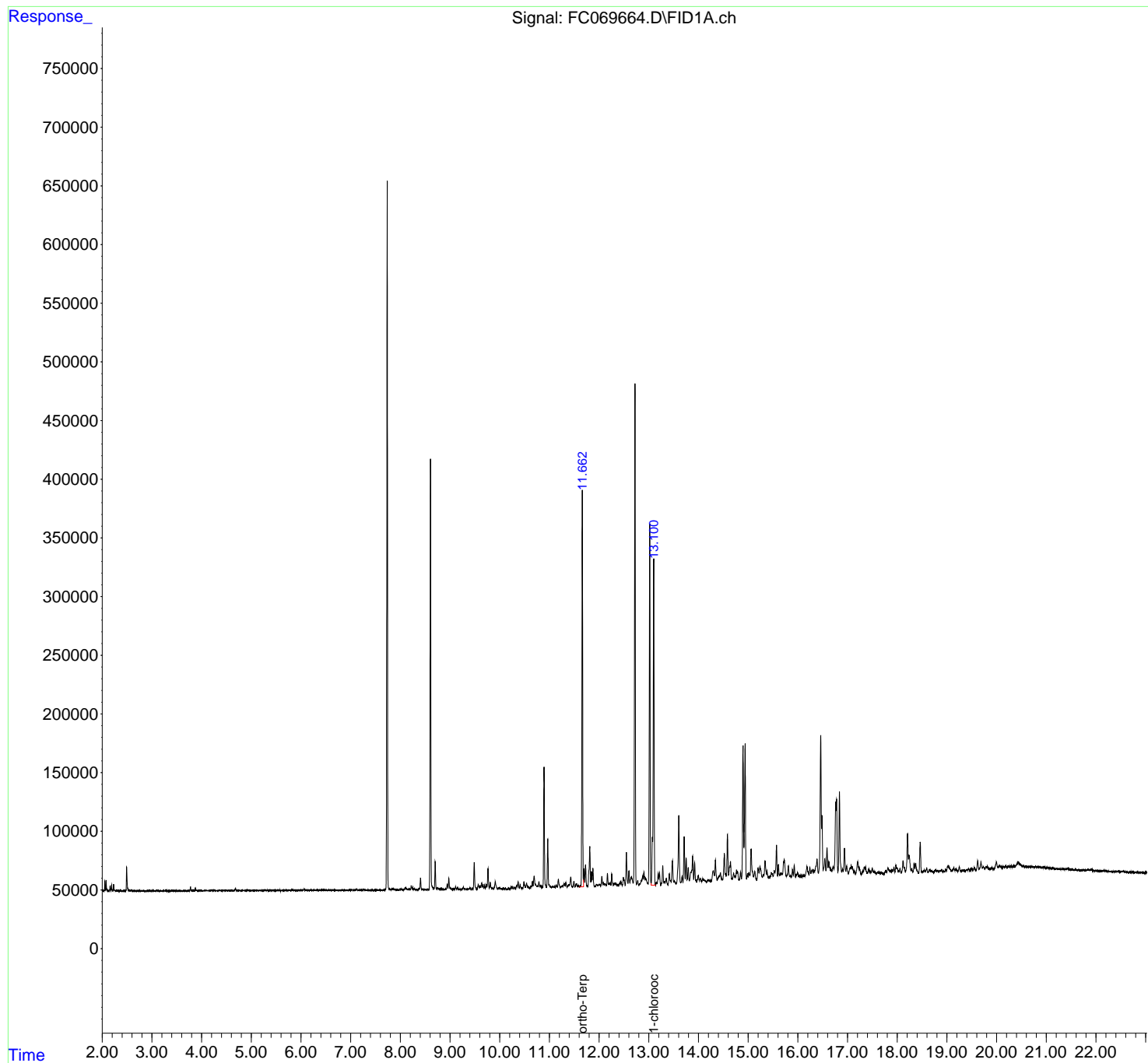
(m)=manual int.

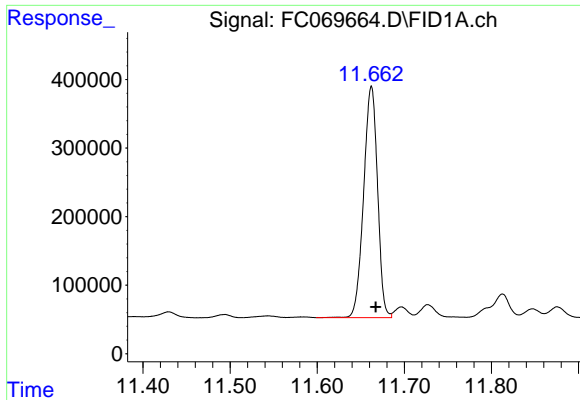
Data Path : Z:\pestpcbsrv\HPCHEM1\FID\_C\Data\FC081425AL\  
 Data File : FC069664.D  
 Signal(s) : FID1A.ch  
 Acq On : 14 Aug 2025 20:51  
 Operator : YP/AJ  
 Sample : Q2858-02  
 Misc :  
 ALS Vial : 18 Sample Multiplier: 1

Instrument :  
 FID\_C  
 ClientSampleId :  
 VNJ 216-EPH-2

Integration File: sample.E  
 Quant Time: Aug 15 11:05:06 2025  
 Quant Method : Z:\pestpcbsrv\HPCHEM1\FID\_C\Method\Aliphatic EPH 080125.M  
 Quant Title : GC Extractables  
 QLast Update : Fri Aug 01 14:14:17 2025  
 Response via : Initial Calibration  
 Integrator: ChemStation

Volume Inj. : 1 ul  
 Signal Phase : Rxi-1ms  
 Signal Info : 20M x 0.18mm x 0.18um

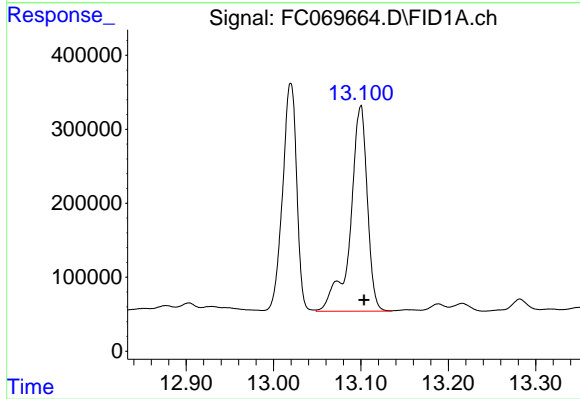




#9 ortho-Terphenyl (SURR)

R.T.: 11.662 min  
 Delta R.T.: -0.005 min  
 Response: 3741210  
 Conc: 25.08 ug/ml

Instrument : FID\_C  
 ClientSampleId : VNJ 216-EPH-2



#12 1-chlorooctadecane (SURR)

R.T.: 13.099 min  
 Delta R.T.: -0.004 min  
 Response: 3751975  
 Conc: 34.41 ug/ml