

Data Path : Z:\pestpcbsrv\HPCHEM1\FID\_C\Data\FC081425AL\  
 Data File : FC069665.D  
 Signal(s) : FID1A.ch  
 Acq On : 14 Aug 2025 22:26  
 Operator : YP/AJ  
 Sample : I.BLK  
 Misc :  
 ALS Vial : 1 Sample Multiplier: 1

Instrument :  
 FID\_C  
 ClientSampleId :  
 I.BLK

Integration File: sample.E  
 Quant Time: Aug 15 11:05:31 2025  
 Quant Method : Z:\pestpcbsrv\HPCHEM1\FID\_C\Method\Aliphatic EPH 080125.M  
 Quant Title : GC Extractables  
 QLast Update : Fri Aug 01 14:14:17 2025  
 Response via : Initial Calibration  
 Integrator: ChemStation

Volume Inj. : 1 ul  
 Signal Phase : Rxi-1ms  
 Signal Info : 20M x 0.18mm x 0.18um

| Compound                    | R.T. | Response | Conc Units |
|-----------------------------|------|----------|------------|
| -----                       |      |          |            |
| System Monitoring Compounds |      |          |            |
| Target Compounds            |      |          |            |
| -----                       |      |          |            |

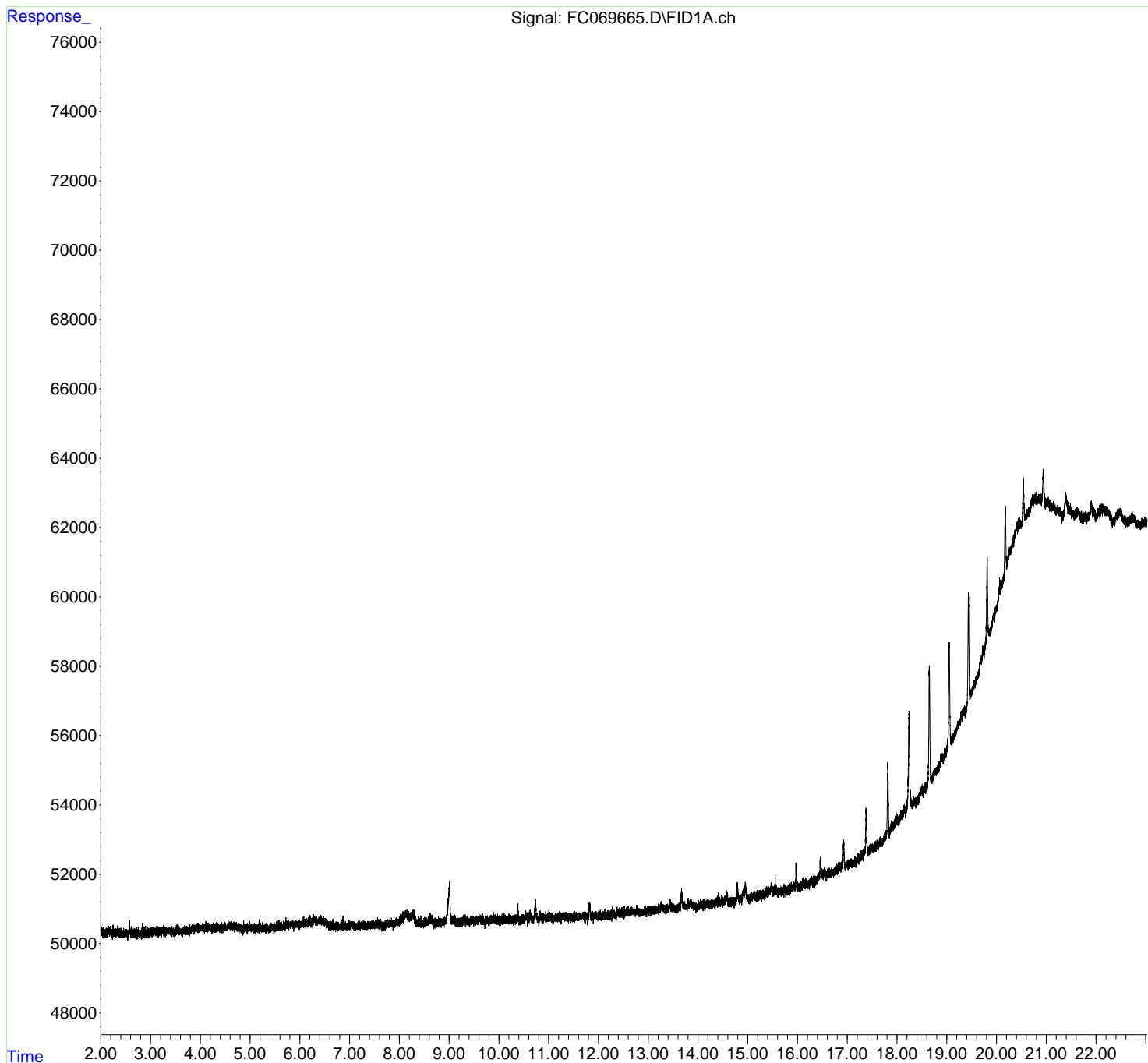
(f)=RT Delta > 1/2 Window (m)=manual int.

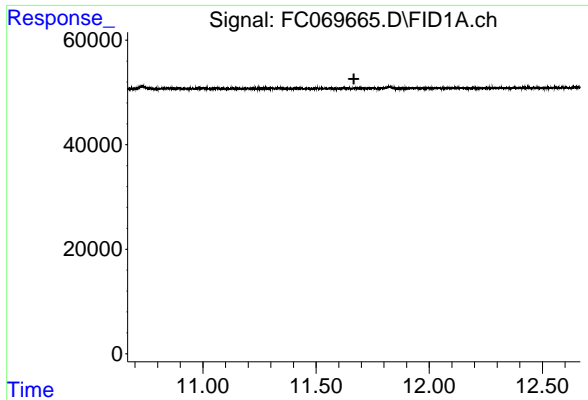
Data Path : Z:\pestpcbsrv\HPCHEM1\FID\_C\Data\FC081425AL\  
 Data File : FC069665.D  
 Signal(s) : FID1A.ch  
 Acq On : 14 Aug 2025 22:26  
 Operator : YP/AJ  
 Sample : I.BLK  
 Misc :  
 ALS Vial : 1 Sample Multiplier: 1

Instrument :  
 FID\_C  
 ClientSampleId :  
 I.BLK

Integration File: sample.E  
 Quant Time: Aug 15 11:05:31 2025  
 Quant Method : Z:\pestpcbsrv\HPCHEM1\FID\_C\Method\Aliphatic EPH 080125.M  
 Quant Title : GC Extractables  
 QLast Update : Fri Aug 01 14:14:17 2025  
 Response via : Initial Calibration  
 Integrator: ChemStation

Volume Inj. : 1 ul  
 Signal Phase : Rxi-1ms  
 Signal Info : 20M x 0.18mm x 0.18um

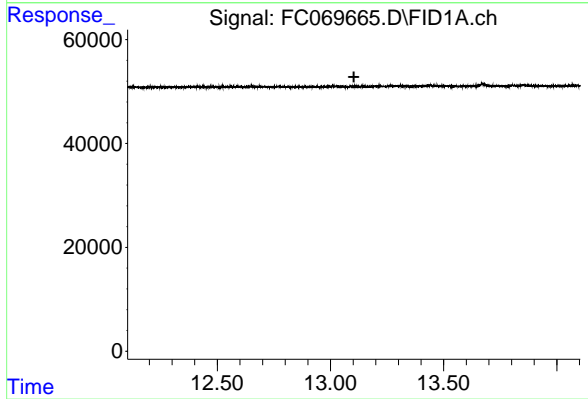




#9 ortho-Terphenyl (SURR)

R.T.: 0.000 min  
Exp R.T. : 11.667 min  
Response: 0  
Conc: N.D.

Instrument :  
FID\_C  
ClientSampleId :  
I.BLK



#12 1-chlorooctadecane (SURR)

R.T.: 0.000 min  
Exp R.T. : 13.104 min  
Response: 0  
Conc: N.D.