

Data Path : Z:\pestpcbsrv\HPCHEM1\FID_C\Data\FC081425AL\
 Data File : FC069666.D
 Signal(s) : FID1A.ch
 Acq On : 14 Aug 2025 23:14
 Operator : YP/AJ
 Sample : 20 PPM ALIPHATIC HC STD
 Misc :
 ALS Vial : 2 Sample Multiplier: 1

Instrument :
 FID_C
 ClientSampleId :
 20 PPM ALIPHATIC HC STD

Integration File: sample.E
 Quant Time: Aug 15 11:05:58 2025
 Quant Method : Z:\pestpcbsrv\HPCHEM1\FID_C\Method\Aliphatic EPH 080125.M
 Quant Title : GC Extractables
 QLast Update : Fri Aug 01 14:14:17 2025
 Response via : Initial Calibration
 Integrator: ChemStation

Volume Inj. : 1 ul
 Signal Phase : Rxi-1ms
 Signal Info : 20M x 0.18mm x 0.18um

Compound	R.T.	Response	Conc Units

System Monitoring Compounds			
9) S ortho-Terphenyl (SURR)	11.661	2717472	18.215 ug/ml
Spiked Amount	50.000	Recovery =	36.43%
12) S 1-chlorooctadecane (S...	13.097	2040077	18.712 ug/ml
Spiked Amount	50.000	Recovery =	37.42%
Target Compounds			
1) T n-Nonane (C9)	3.394	2580363	18.111 ug/ml
2) T n-Decane (C10)	4.466	2666149	18.339 ug/ml
3) T A~Naphthalene (C11.7)	6.061	2843597	18.326 ug/ml
4) T n-Dodecane (C12)	6.491	2671916	18.278 ug/ml
5) T A~2-methylnaphthalene...	7.120	2712061	18.415 ug/ml
6) T n-Tetradecane (C14)	8.290	2631695	18.441 ug/ml
7) T n-Hexadecane (C16)	9.894	2657216	18.432 ug/ml
8) T n-Octadecane (C18)	11.339	2593444	18.340 ug/ml
10) T n-Eicosane (C20)	12.650	2416072	18.341 ug/ml
11) T n-Heneicosane (C21)	13.263	2335498	18.311 ug/ml
13) T n-Docosane (C22)	13.850	2300141	18.413 ug/ml
14) T n-Tetracosane (C24)	14.955	2222050	18.414 ug/ml
15) T n-Hexacosane (C26)	15.977	2120858	18.354 ug/ml
16) T n-Octacosane (C28)	16.929	2077744	18.537 ug/ml
17) T n-Tricontane (C30)	17.818	2191890	19.144 ug/ml
18) T n-Dotriacontane (C32)	18.652	2218998	19.976 ug/ml
19) T n-Tetratriacontane (C34)	19.436	2035966	19.995 ug/ml
20) T n-Hexatriacontane (C36)	20.178	1743907	19.558 ug/ml
21) T n-Octatriacontane (C38)	20.941	1557667	19.364 ug/ml
22) T n-Tetracontane (C40)	21.901	1457264	19.461 ug/ml

(f)=RT Delta > 1/2 Window

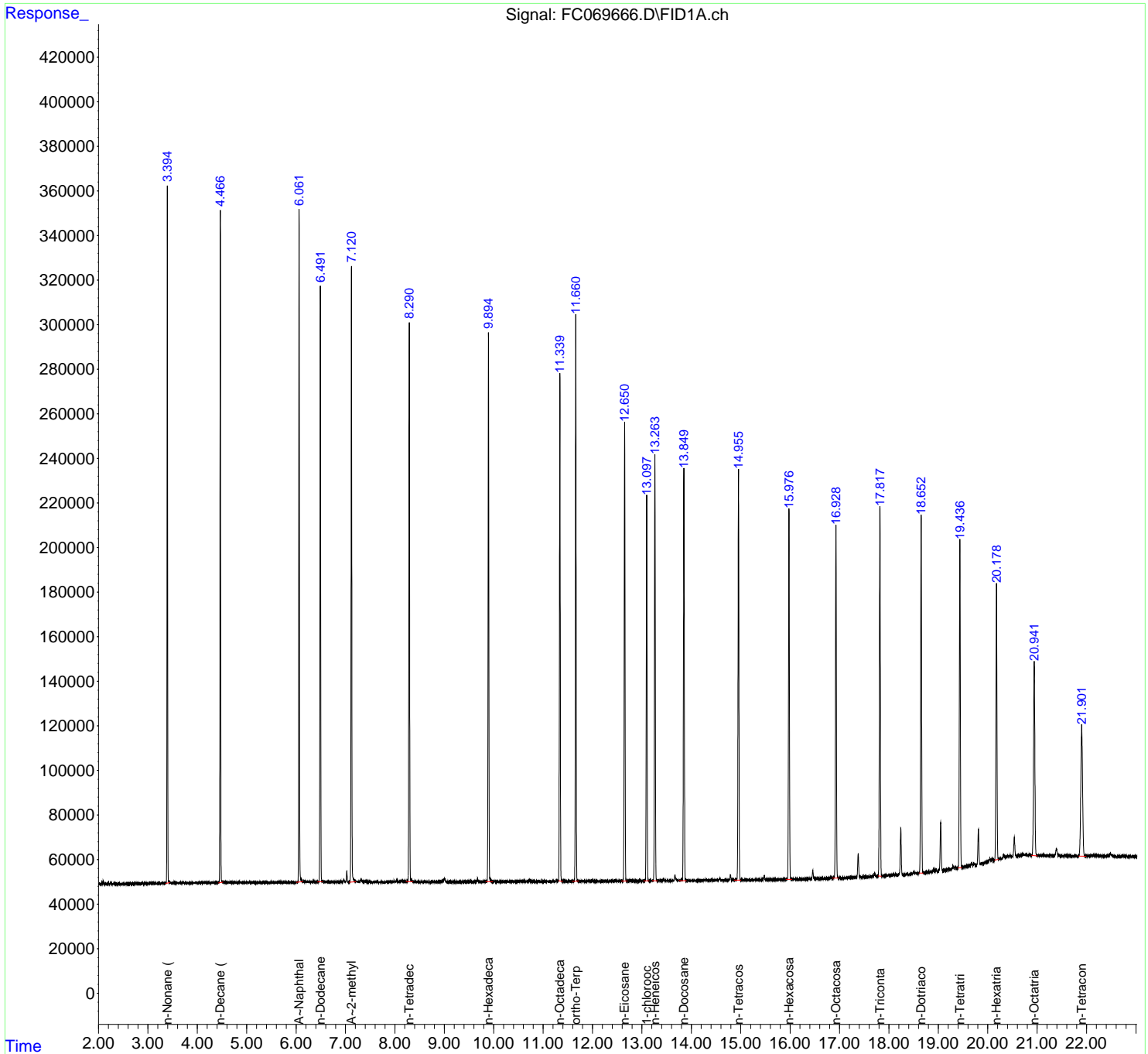
(m)=manual int.

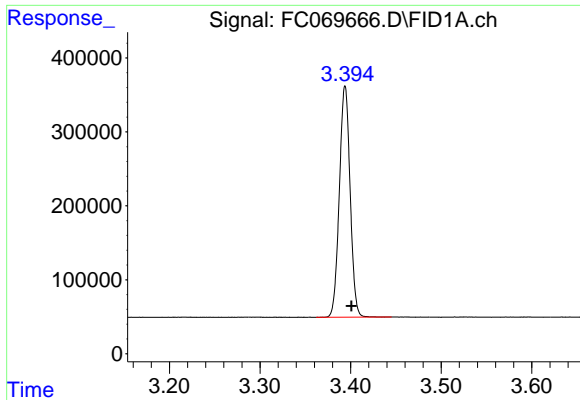
Data Path : Z:\pestpcbsrv\HPCHEM1\FID_C\Data\FC081425AL\
 Data File : FC069666.D
 Signal(s) : FID1A.ch
 Acq On : 14 Aug 2025 23:14
 Operator : YP/AJ
 Sample : 20 PPM ALIPHATIC HC STD
 Misc :
 ALS Vial : 2 Sample Multiplier: 1

Instrument :
 FID_C
 ClientSampleId :
 20 PPM ALIPHATIC HC STD

Integration File: sample.E
 Quant Time: Aug 15 11:05:58 2025
 Quant Method : Z:\pestpcbsrv\HPCHEM1\FID_C\Method\Aliphatic EPH 080125.M
 Quant Title : GC Extractables
 QLast Update : Fri Aug 01 14:14:17 2025
 Response via : Initial Calibration
 Integrator: ChemStation

Volume Inj. : 1 ul
 Signal Phase : Rxi-1ms
 Signal Info : 20M x 0.18mm x 0.18um

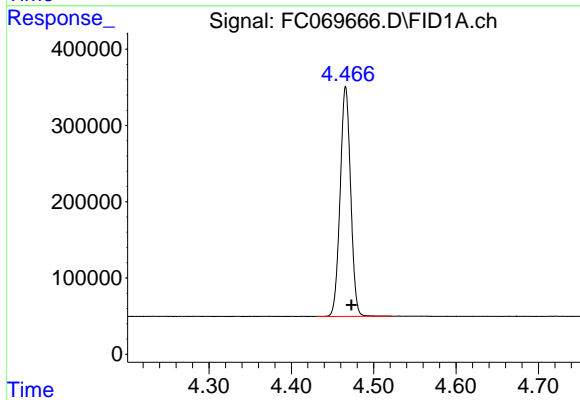




#1 n-Nonane (C9)

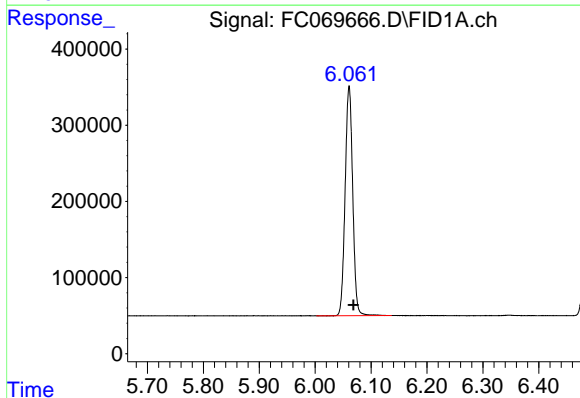
R.T.: 3.394 min
 Delta R.T.: -0.007 min
 Response: 2580363
 Conc: 18.11 ug/ml

Instrument : FID_C
 ClientSampleId : 20 PPM ALIPHATIC HC STD



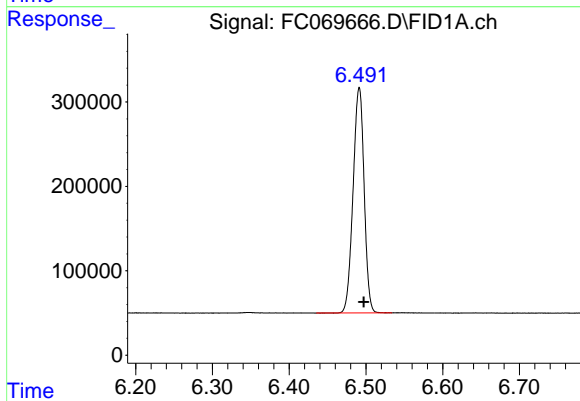
#2 n-Decane (C10)

R.T.: 4.466 min
 Delta R.T.: -0.007 min
 Response: 2666149
 Conc: 18.34 ug/ml



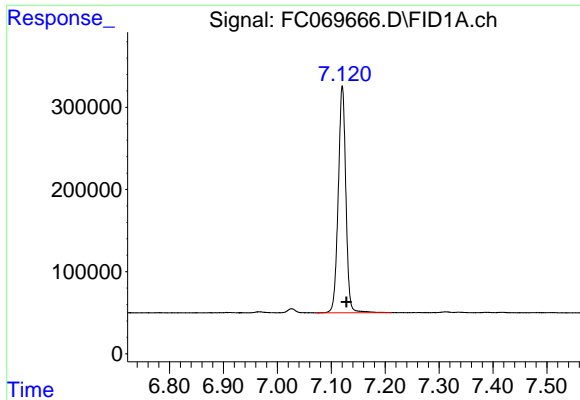
#3 A~Naphthalene (C11.7)

R.T.: 6.061 min
 Delta R.T.: -0.008 min
 Response: 2843597
 Conc: 18.33 ug/ml



#4 n-Dodecane (C12)

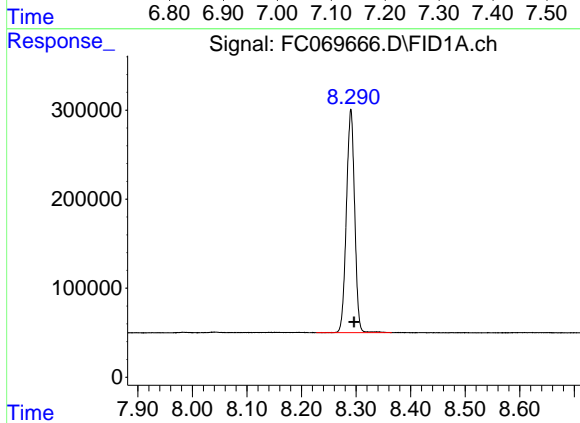
R.T.: 6.491 min
 Delta R.T.: -0.006 min
 Response: 2671916
 Conc: 18.28 ug/ml



#5 A~2-methylnaphthalene (C12.89)

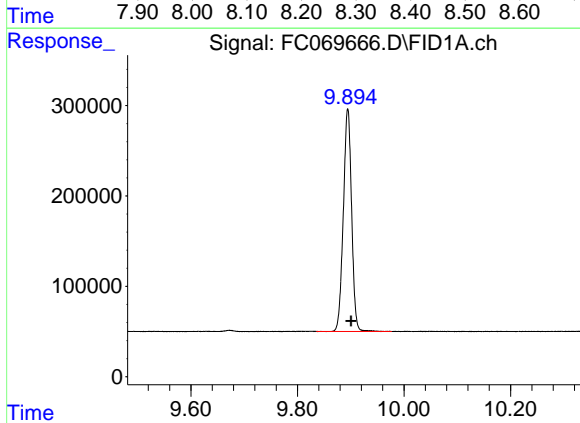
R.T.: 7.120 min
 Delta R.T.: -0.008 min
 Response: 2712061
 Conc: 18.42 ug/ml

Instrument : FID_C
 ClientSampleId : 20 PPM ALIPHATIC HC STD



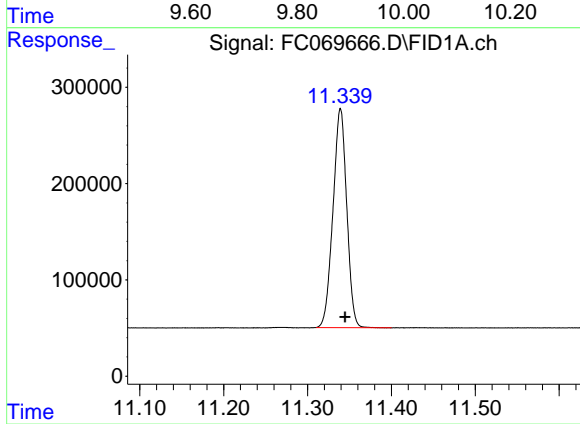
#6 n-Tetradecane (C14)

R.T.: 8.290 min
 Delta R.T.: -0.006 min
 Response: 2631695
 Conc: 18.44 ug/ml



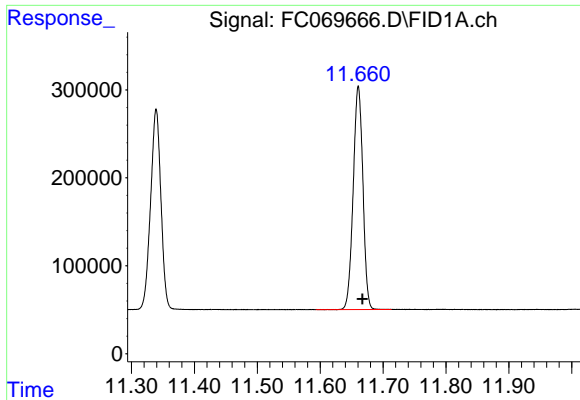
#7 n-Hexadecane (C16)

R.T.: 9.894 min
 Delta R.T.: -0.006 min
 Response: 2657216
 Conc: 18.43 ug/ml



#8 n-Octadecane (C18)

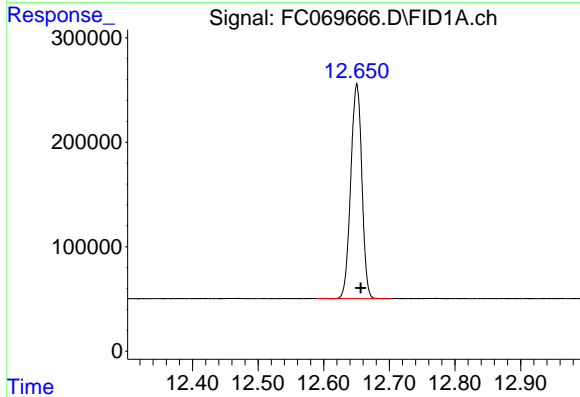
R.T.: 11.339 min
 Delta R.T.: -0.006 min
 Response: 2593444
 Conc: 18.34 ug/ml



#9 ortho-Terphenyl (SURR)

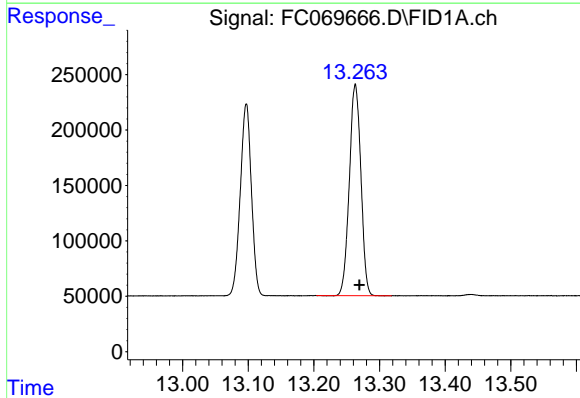
R.T.: 11.661 min
 Delta R.T.: -0.006 min
 Response: 2717472
 Conc: 18.22 ug/ml

Instrument :
 FID_C
 ClientSampleId :
 20 PPM ALIPHATIC HC STD



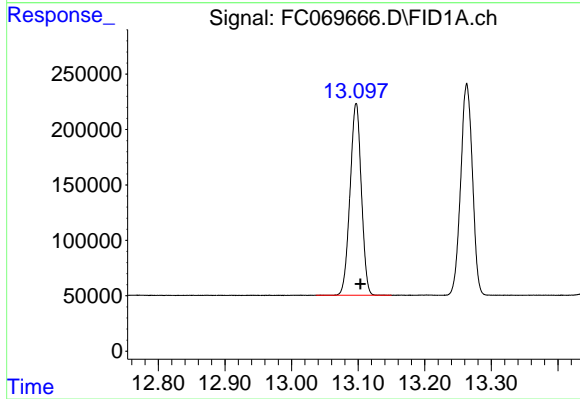
#10 n-Eicosane (C20)

R.T.: 12.650 min
 Delta R.T.: -0.006 min
 Response: 2416072
 Conc: 18.34 ug/ml



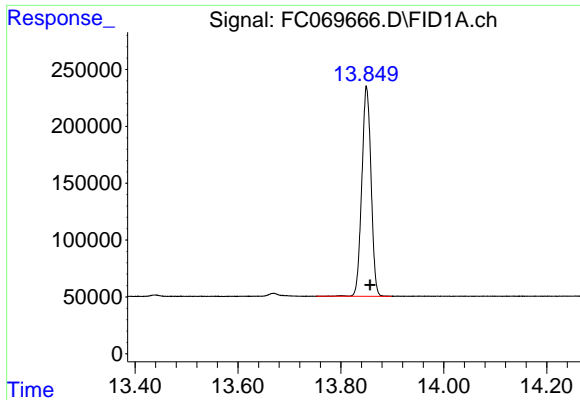
#11 n-Heneicosane (C21)

R.T.: 13.263 min
 Delta R.T.: -0.006 min
 Response: 2335498
 Conc: 18.31 ug/ml



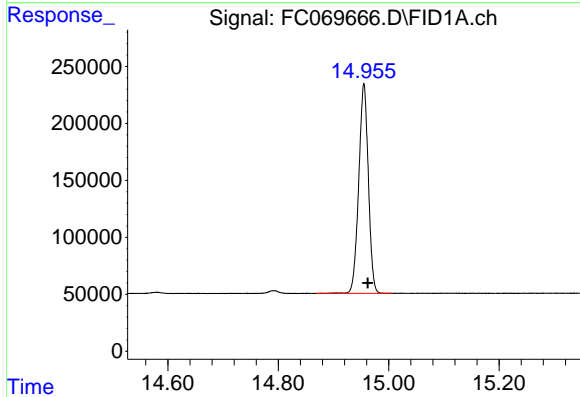
#12 1-chlorooctadecane (SURR)

R.T.: 13.097 min
 Delta R.T.: -0.007 min
 Response: 2040077
 Conc: 18.71 ug/ml

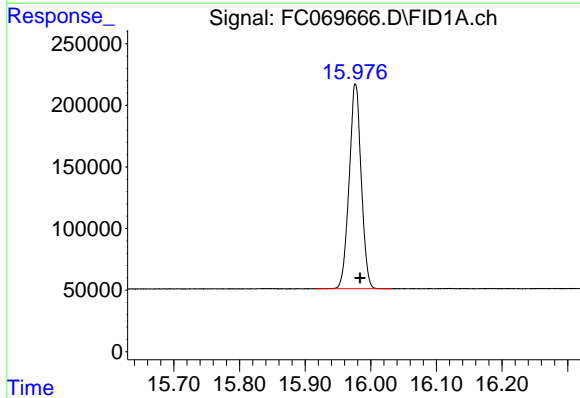


#13 n-Docosane (C22)
R.T.: 13.850 min
Delta R.T.: -0.007 min
Response: 2300141
Conc: 18.41 ug/ml

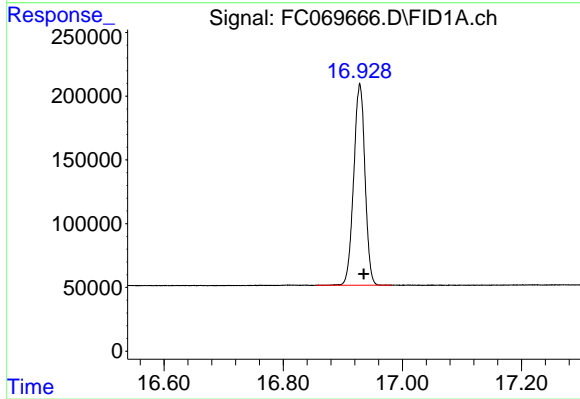
Instrument :
FID_C
ClientSampleId :
20 PPM ALIPHATIC HC STD



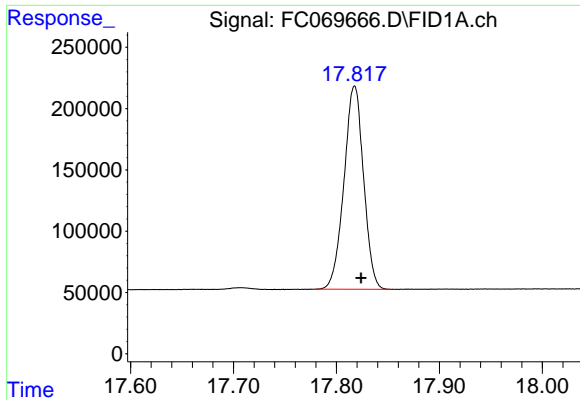
#14 n-Tetracosane (C24)
R.T.: 14.955 min
Delta R.T.: -0.007 min
Response: 2222050
Conc: 18.41 ug/ml



#15 n-Hexacosane (C26)
R.T.: 15.977 min
Delta R.T.: -0.007 min
Response: 2120858
Conc: 18.35 ug/ml



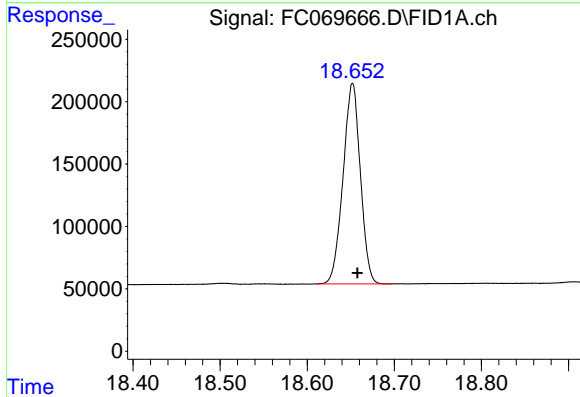
#16 n-Octacosane (C28)
R.T.: 16.929 min
Delta R.T.: -0.007 min
Response: 2077744
Conc: 18.54 ug/ml



#17 n-Tricontane (C30)

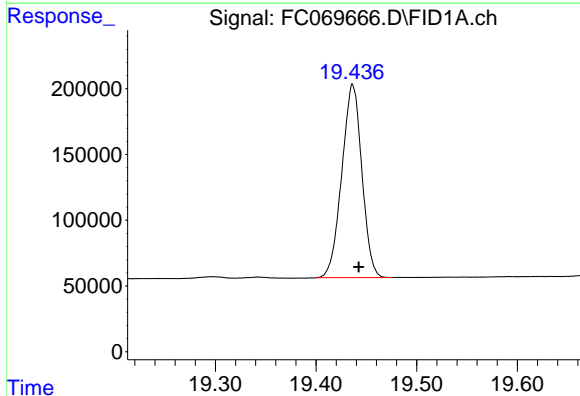
R.T.: 17.818 min
 Delta R.T.: -0.006 min
 Response: 2191890
 Conc: 19.14 ug/ml

Instrument : FID_C
 ClientSampleId : 20 PPM ALIPHATIC HC STD



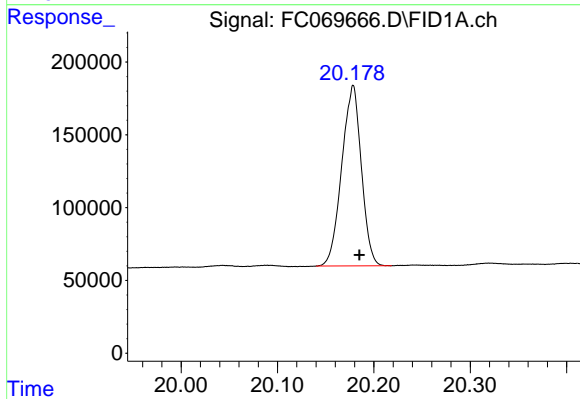
#18 n-Dotriacontane (C32)

R.T.: 18.652 min
 Delta R.T.: -0.006 min
 Response: 2218998
 Conc: 19.98 ug/ml



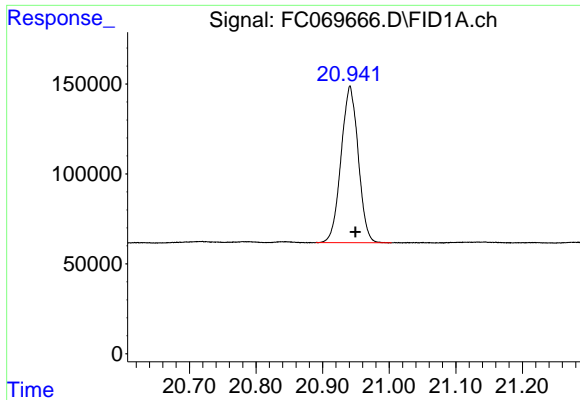
#19 n-Tetratriacontane (C34)

R.T.: 19.436 min
 Delta R.T.: -0.006 min
 Response: 2035966
 Conc: 19.99 ug/ml



#20 n-Hexatriacontane (C36)

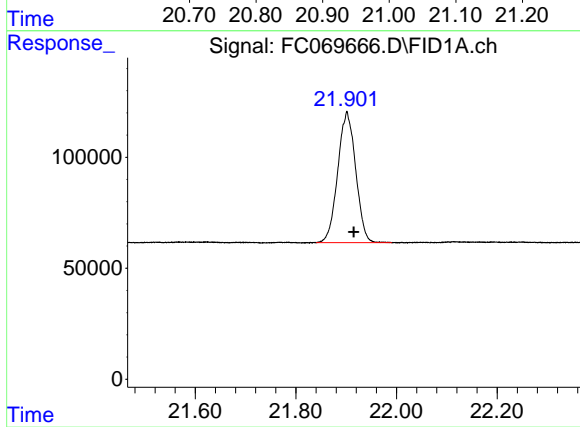
R.T.: 20.178 min
 Delta R.T.: -0.007 min
 Response: 1743907
 Conc: 19.56 ug/ml



#21 n-Octatriacontane (C38)

R.T.: 20.941 min
 Delta R.T.: -0.008 min
 Response: 1557667
 Conc: 19.36 ug/ml

Instrument :
 FID_C
 ClientSampleId :
 20 PPM ALIPHATIC HC STD



#22 n-Tetracontane (C40)

R.T.: 21.901 min
 Delta R.T.: -0.014 min
 Response: 1457264
 Conc: 19.46 ug/ml