

Data Path : Z:\pestpcbsrv\HPCHEM1\FID_C\Data\FC081621AL\
 Data File : FC055209.D
 Signal(s) : FID1A.CH
 Acq On : 16 Aug 2021 21:29
 Operator : AJ\MA
 Sample : M3424-14
 Misc :
 ALS Vial : 17 Sample Multiplier: 1

Instrument :
 FID_C
 ClientSampleId :
 20N

Integration File: autoint1.e
 Quant Time: Aug 17 01:33:50 2021
 Quant Method : Z:\pestpcbsrv\HPCHEM1\FID_C\Method\Alaphatic EPH 080321.M
 Quant Title : GC Extractables
 QLast Update : Wed Aug 04 02:08:31 2021
 Response via : Initial Calibration
 Integrator: ChemStation 6890 Scale Mode: Large solvent peaks clipped

Volume Inj. : 1 ul
 Signal Phase : Rxi-1ms
 Signal Info : 20M x 0.18mm x 0.18um

Compound	R.T.	Response	Conc Units

System Monitoring Compounds			
9) S ortho-Terphenyl (SURR)	11.306	3828785	30.411 ug/ml
Spiked Amount	50.000	Recovery	= 60.82%
12) S 1-chlorooctadecane (S...	12.746	3054226	30.818 ug/ml
Spiked Amount	50.000	Recovery	= 61.64%

Target Compounds

(f)=RT Delta > 1/2 Window

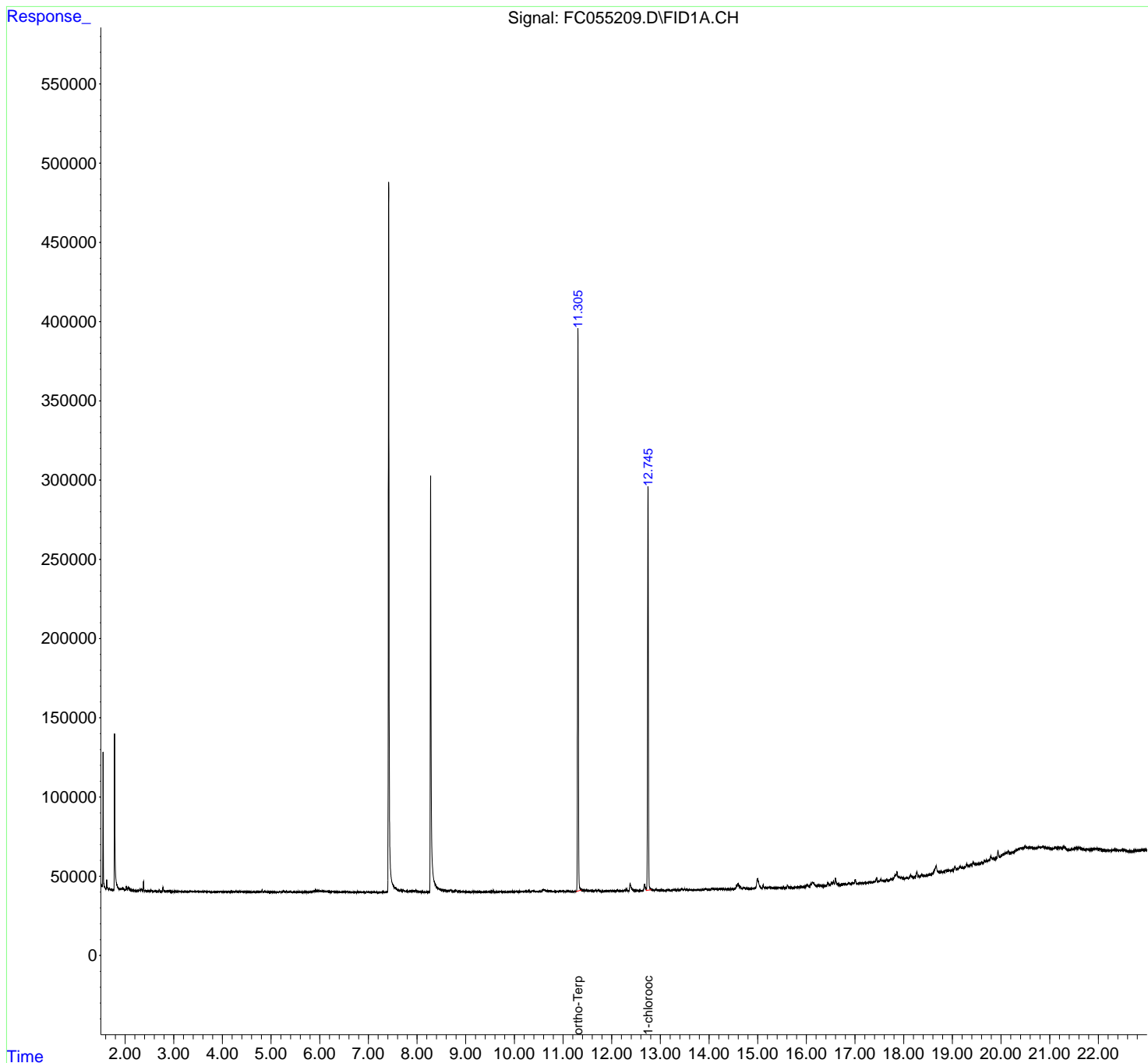
(m)=manual int.

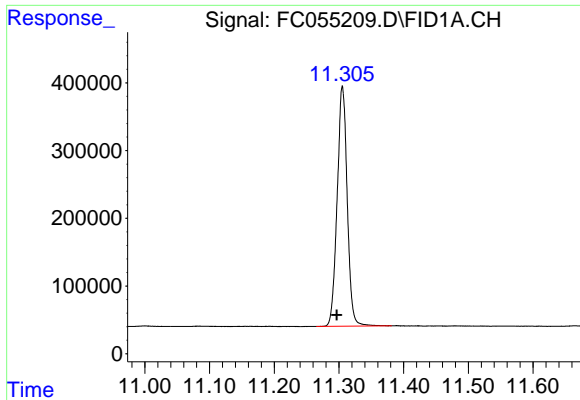
Data Path : Z:\pestpcbsrv\HPCHEM1\FID_C\Data\FC081621AL\
 Data File : FC055209.D
 Signal(s) : FID1A.CH
 Acq On : 16 Aug 2021 21:29
 Operator : AJ\MA
 Sample : M3424-14
 Misc :
 ALS Vial : 17 Sample Multiplier: 1

Instrument :
 FID_C
 ClientSampleId :
 20N

Integration File: autoint1.e
 Quant Time: Aug 17 01:33:50 2021
 Quant Method : Z:\pestpcbsrv\HPCHEM1\FID_C\Method\Alaphatic EPH 080321.M
 Quant Title : GC Extractables
 QLast Update : Wed Aug 04 02:08:31 2021
 Response via : Initial Calibration
 Integrator: ChemStation 6890 Scale Mode: Large solvent peaks clipped

Volume Inj. : 1 ul
 Signal Phase : Rxi-1ms
 Signal Info : 20M x 0.18mm x 0.18um

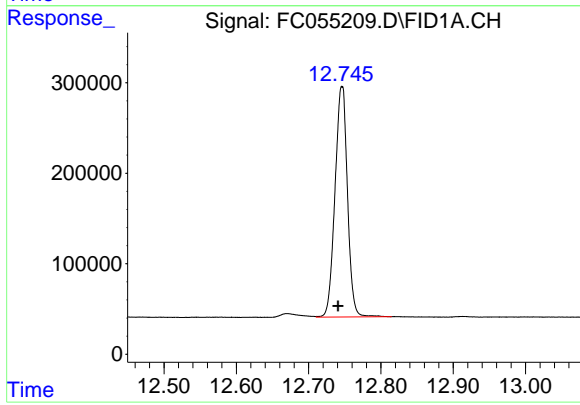




#9 ortho-Terphenyl (SURR)

R.T.: 11.306 min
Delta R.T.: 0.009 min
Response: 3828785
Conc: 30.41 ug/ml

Instrument :
FID_C
ClientSampleId :
20N



#12 1-chlorooctadecane (SURR)

R.T.: 12.746 min
Delta R.T.: 0.005 min
Response: 3054226
Conc: 30.82 ug/ml