

Data Path : Z:\pestpcbsrv\HPCHEM1\FID_C\Data\FC081621AL\
 Data File : FC055216.D
 Signal(s) : FID1A.CH
 Acq On : 17 Aug 2021 2:15
 Operator : AJ\MA
 Sample : M3425-05
 Misc :
 ALS Vial : 22 Sample Multiplier: 1

Instrument :
 FID_C
 ClientSampleId :
 21N

Integration File: autoint1.e
 Quant Time: Aug 17 03:03:09 2021
 Quant Method : Z:\pestpcbsrv\HPCHEM1\FID_C\Method\Alaphatic EPH 080321.M
 Quant Title : GC Extractables
 QLast Update : Wed Aug 04 02:08:31 2021
 Response via : Initial Calibration
 Integrator: ChemStation 6890 Scale Mode: Large solvent peaks clipped

Volume Inj. : 1 ul
 Signal Phase : Rxi-1ms
 Signal Info : 20M x 0.18mm x 0.18um

Compound	R.T.	Response	Conc Units

System Monitoring Compounds			
9) S ortho-Terphenyl (SURR)	11.305	5855528	46.510 ug/ml
Spiked Amount	50.000	Recovery	= 93.02%
12) S 1-chlorooctadecane (S...	12.744	4607760	46.493 ug/ml
Spiked Amount	50.000	Recovery	= 92.99%

Target Compounds

(f)=RT Delta > 1/2 Window

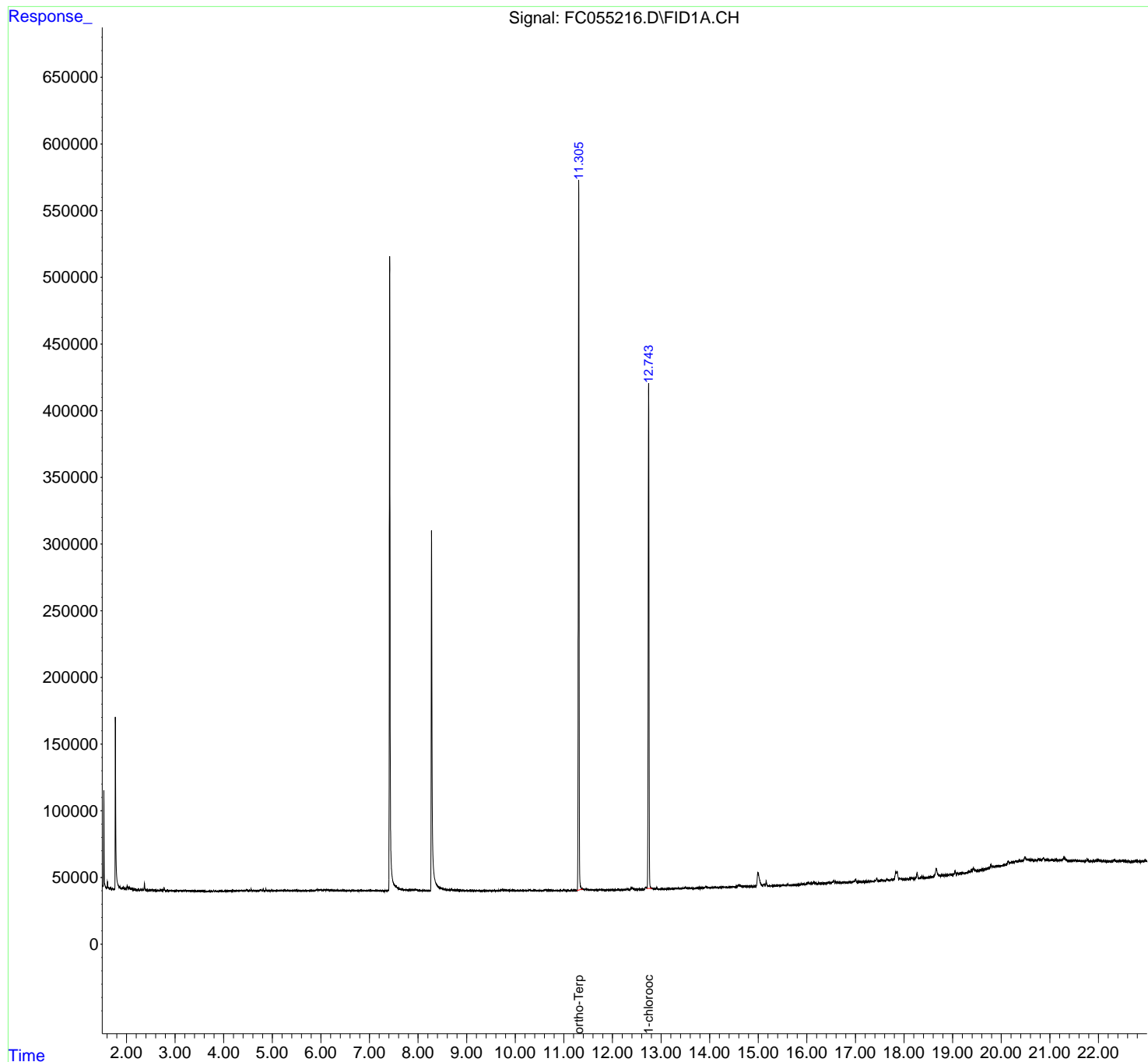
(m)=manual int.

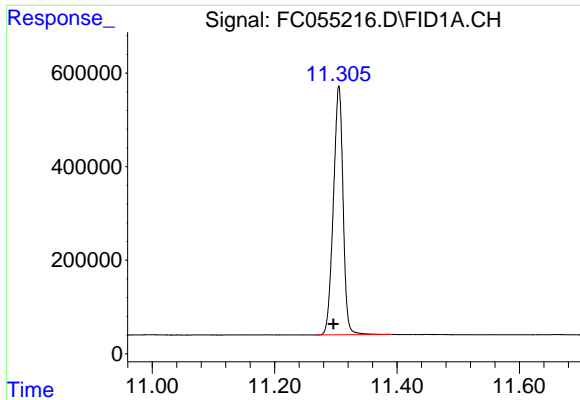
Data Path : Z:\pestpcbsrv\HPCHEM1\FID_C\Data\FC081621AL\
Data File : FC055216.D
Signal(s) : FID1A.CH
Acq On : 17 Aug 2021 2:15
Operator : AJ\MA
Sample : M3425-05
Misc :
ALS Vial : 22 Sample Multiplier: 1

Instrument :
FID_C
ClientSampleId :
21N

Integration File: autoint1.e
Quant Time: Aug 17 03:03:09 2021
Quant Method : Z:\pestpcbsrv\HPCHEM1\FID_C\Method\Aliphatic EPH 080321.M
Quant Title : GC Extractables
QLast Update : Wed Aug 04 02:08:31 2021
Response via : Initial Calibration
Integrator: ChemStation 6890 Scale Mode: Large solvent peaks clipped

Volume Inj. : 1 ul
Signal Phase : Rxi-1ms
Signal Info : 20M x 0.18mm x 0.18um

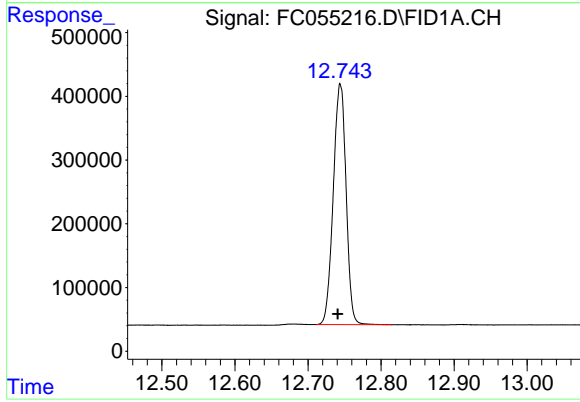




#9 ortho-Terphenyl (SURR)

R.T.: 11.305 min
Delta R.T.: 0.008 min
Response: 5855528
Conc: 46.51 ug/ml

Instrument :
FID_C
ClientSampleId :
21N



#12 1-chlorooctadecane (SURR)

R.T.: 12.744 min
Delta R.T.: 0.003 min
Response: 4607760
Conc: 46.49 ug/ml