

Data Path : Z:\pestpcbsrv\HPCHEM1\FID_C\Data\FC081820AL\
 Data File : FC049078.D
 Signal(s) : FID1A.CH
 Acq On : 18 Aug 2020 18:19
 Operator : DD\AJ
 Sample : L3496-03
 Misc :
 ALS Vial : 12 Sample Multiplier: 1

Instrument :
 FID_C
 ClientSampleId :
 AU-06-081720-1

Integration File: autoint1.e
 Quant Time: Aug 19 02:20:05 2020
 Quant Method : Z:\pestpcbsrv\HPCHEM1\FID_C\Method\Alaphatic EPH 080720.M
 Quant Title : GC Extractables
 QLast Update : Sat Aug 08 02:38:47 2020
 Response via : Initial Calibration
 Integrator: ChemStation 6890 Scale Mode: Large solvent peaks clipped

Volume Inj. : 1 ul
 Signal Phase : Rxi-1ms
 Signal Info : 20M x 0.18mm x 0.18um

Compound	R.T.	Response	Conc Units

System Monitoring Compounds			
12) S 1-chlorooctadecane (S...	13.117	3624417	37.258 ug/ml
Spiked Amount	50.000	Recovery	= 74.52%
Target Compounds			

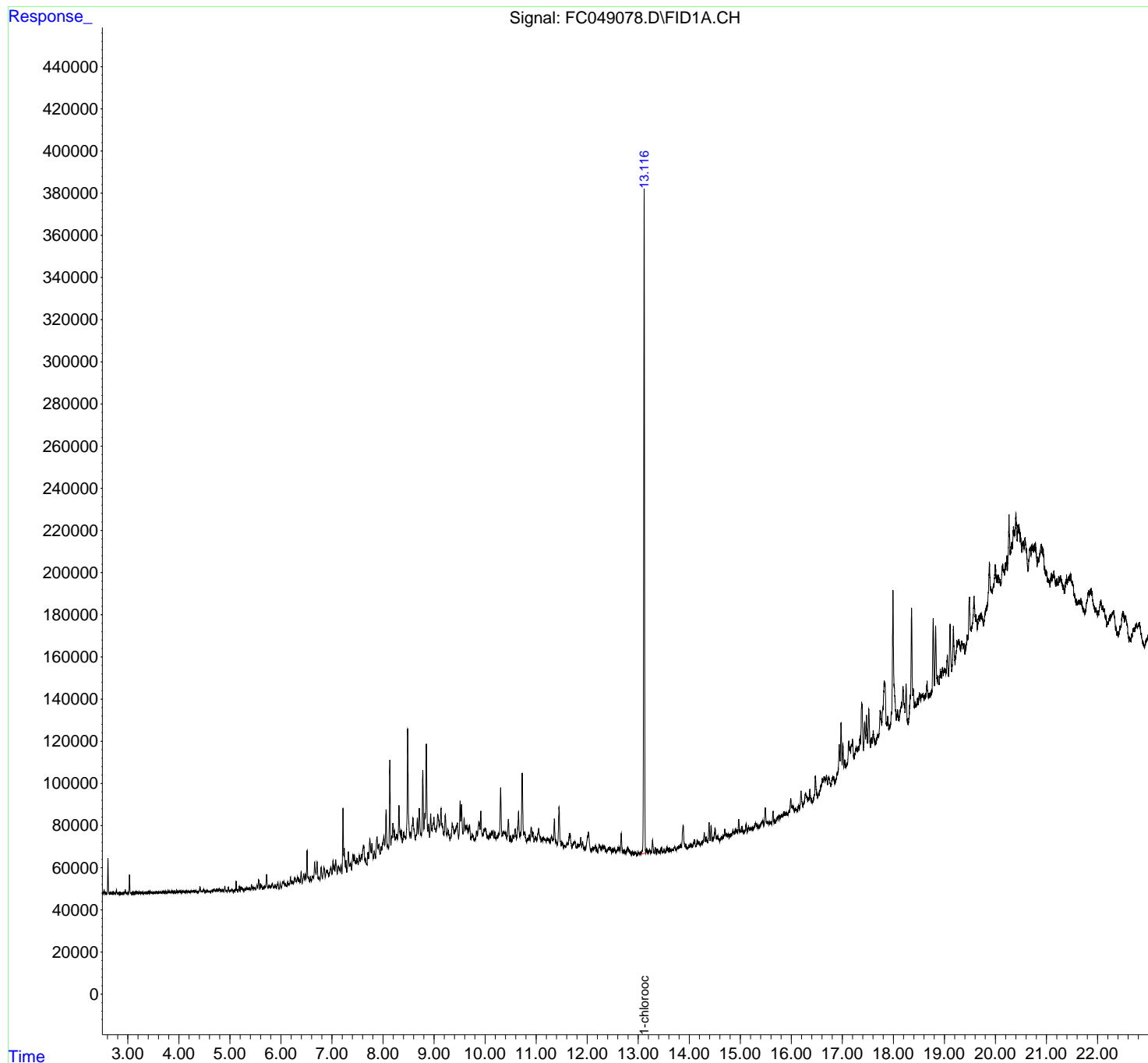
(f)=RT Delta > 1/2 Window (m)=manual int.

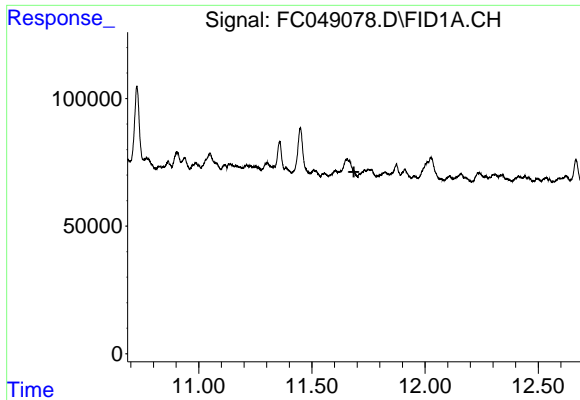
Data Path : Z:\pestpcbsrv\HPCHEM1\FID_C\Data\FC081820AL\
Data File : FC049078.D
Signal(s) : FID1A.CH
Acq On : 18 Aug 2020 18:19
Operator : DD\AJ
Sample : L3496-03
Misc :
ALS Vial : 12 Sample Multiplier: 1

Instrument :
FID_C
ClientSampled :
AU-06-081720-1

Integration File: autoint1.e
Quant Time: Aug 19 02:20:05 2020
Quant Method : Z:\pestpcbsrv\HPCHEM1\FID_C\Method\Alaphatic EPH 080720.M
Quant Title : GC Extractables
QLast Update : Sat Aug 08 02:38:47 2020
Response via : Initial Calibration
Integrator: ChemStation 6890 Scale Mode: Large solvent peaks clipped

Volume Inj. : 1 ul
Signal Phase : Rxi-1ms
Signal Info : 20M x 0.18mm x 0.18um

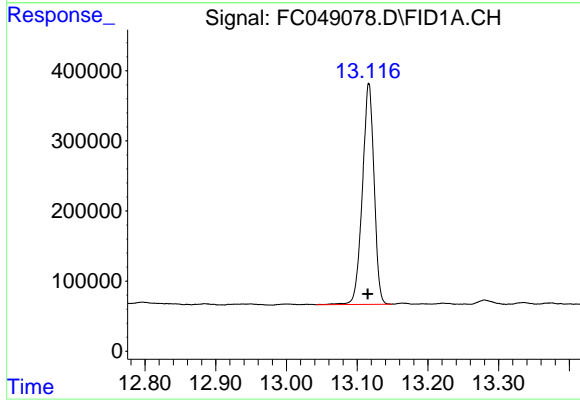




#9 ortho-Terphenyl (SURR)

R.T.: 0.000 min
Exp R.T.: 11.685 min
Response: 0
Conc: N.D.

Instrument :
FID_C
ClientSampled :
AU-06-081720-1



#12 1-chlorooctadecane (SURR)

R.T.: 13.117 min
Delta R.T.: 0.002 min
Response: 3624417
Conc: 37.26 ug/ml